

LONG BARN, RYLSTONE

Scale bar: 1 2 3 4 5 6 m. 1/100

S-2-2013. ACA.



Dutch door (re-set?)
IMR 1680

New window

19th c window

ST →

Fodder gang.

boards

plinth

stairs

75

55

re-used
cruck as
purlin
tie beam
re-used.
Truss F18C

inserted
brick
partition

partition
wall
divides
barn into
two
CROP STORE

THRASHING
FLOOR.

FORMER
SHIPPON

19th c
bolted
king-post
trusses

Hb.

HOUSE

former
granary
or stable?
later
cottage.

PORCH

Stable
outshd.
former shippan

Left over stable
or shippan outshd

stone lined
F18C
PORCH

65

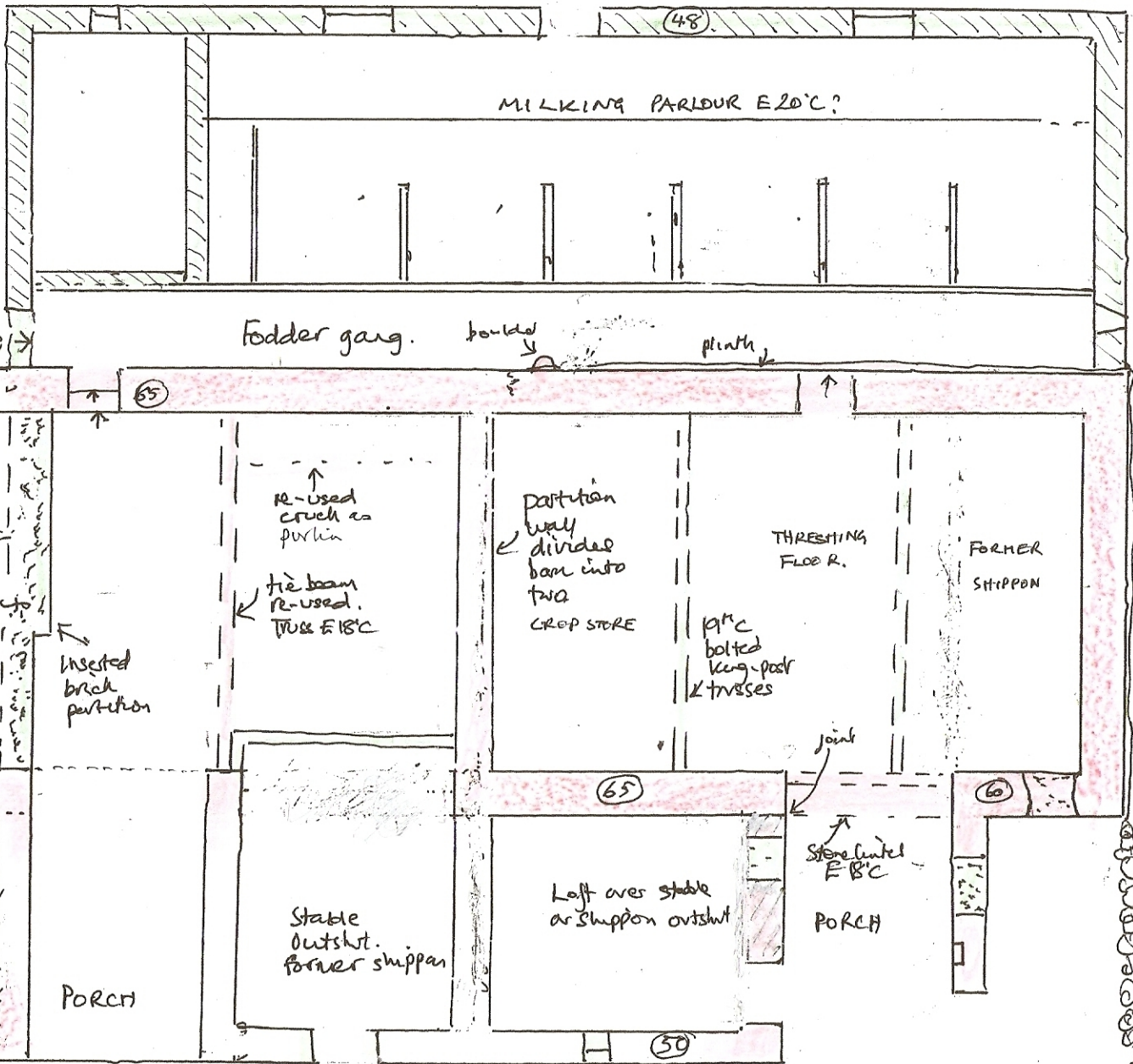
60

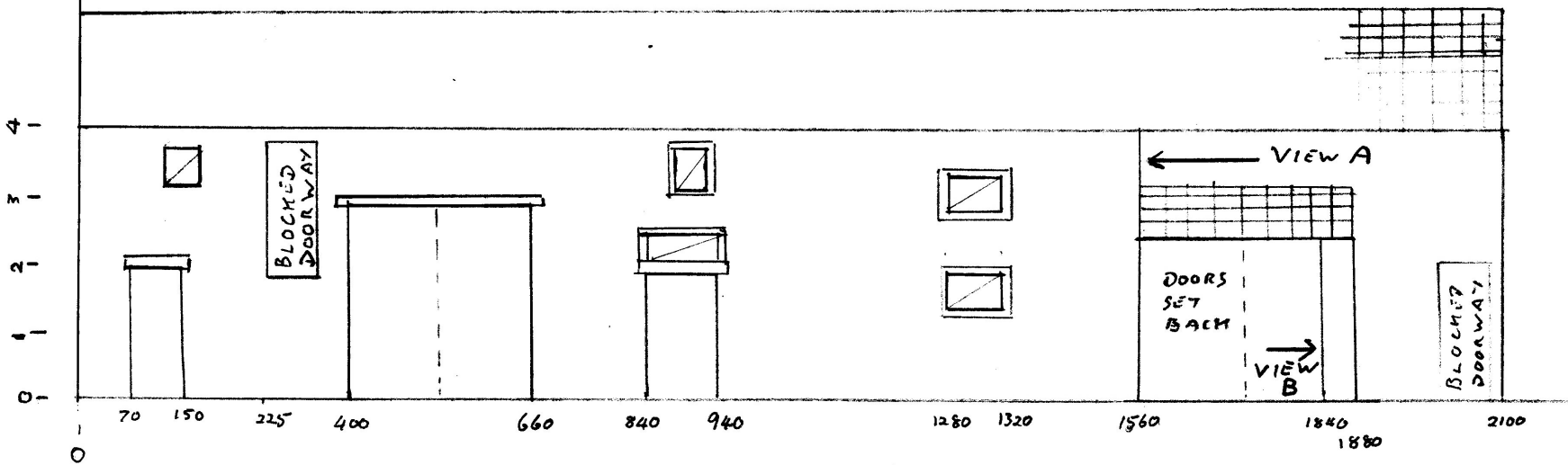
50

central
drick entry

KEY

- Pre 1730 (17th c & cruck 16th c?)
- Late 18th c, 19th c, E20th c





LODGE BARN, RYLSTONE 5/02/2013

