





GATEWAY TO

FRIENDS BURIAL GROUND.

1657. WHERE RECORDS
SHOW THAT 29 BURIALS
TOOK PLACE.

ORIGINALLY IT WAS KNOWN AS
RILSTON REAKS, REAKES, RAKES AND AS
NOW, IS SITUATED ON RAIKES LANE

WHAT'S IN A NAME?



The following was found in the
Preface of the Parish Register
for Rylstone

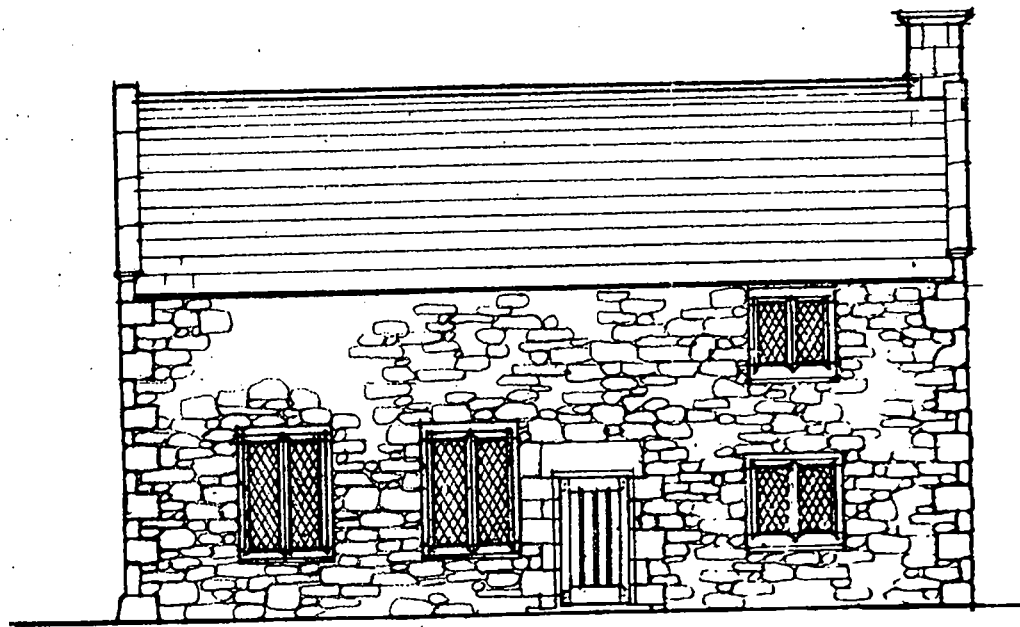
1559 — 1723.

and written therein in February 1895

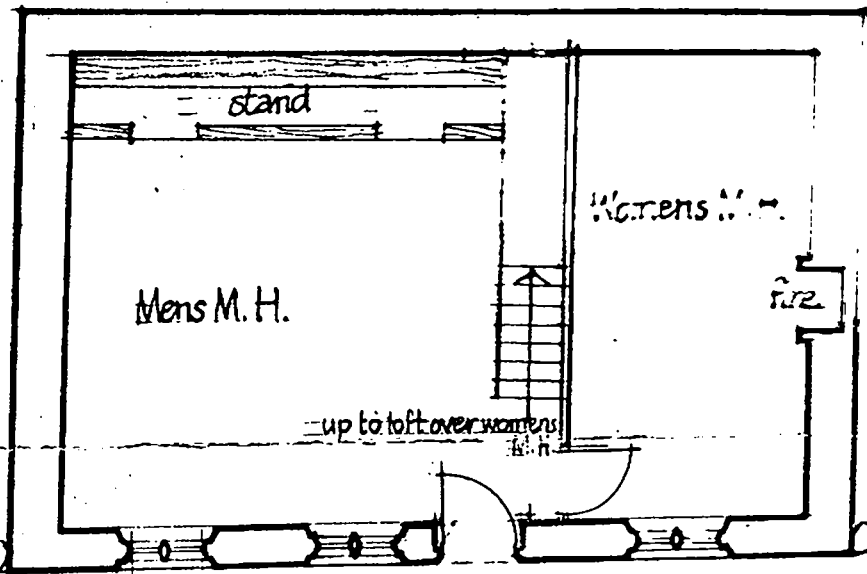
Rilston Raikes (or Reakes) is an old
disused Quakers' burying ground.
It is a small enclosure of about
13 square yards with an old gateway,
the lintel of which is formed by a
single stone, slightly curved.
At the back of this enclosure, stands
what has probably once been a chapel,
but is now a barn, it has been used
within this century as a school.
As will be seen by referring to the Index,
there do not appear to have been many
burials, and such as there were, took
place about the same period. There is at
present no trace whatever of any graves or
headstones, indeed the enclosure appears to
be used as a garden, and it is probable, had
not their burials been entered in the Church
Registers, the fact that it has ever been used
as a burying ground would have been
forgotten

Rylstone. February 1895.

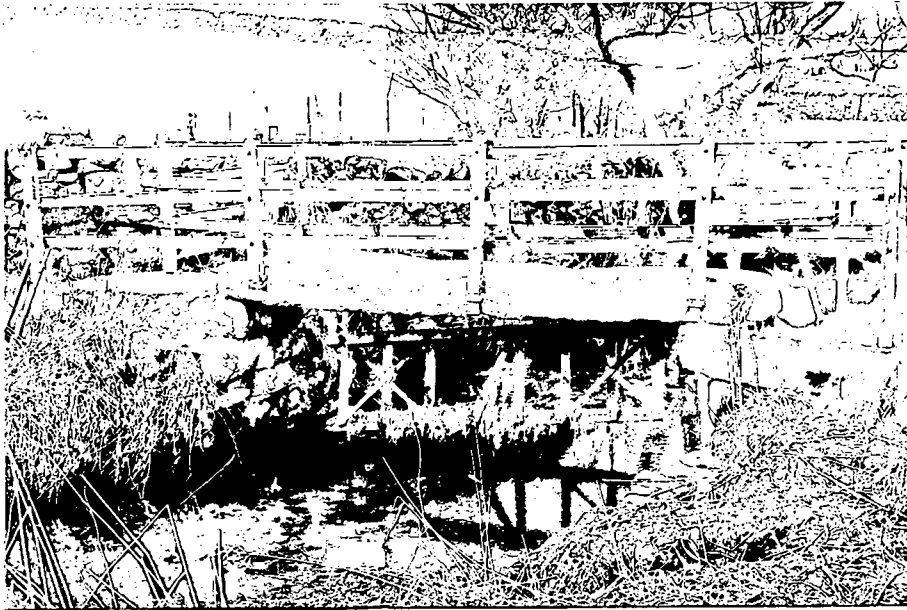
THE RYLSTONE MEETING H



FRONT ELEVATION.



Burial Ground.



KIRK BRIDGE

WHICH SPANS SKIRSEGILL
ON STRAIT LANE BETWEEN
THE VILLAGES OF HETTON
AND RYLSTONE.

RYLSTONE
FILE