

# Elbeck Barn



## Occupants

Tony Oldham Born Rochdale Lancashire  
Mary Oldham Born Newbiggin by the Sea.

Tony first discovered Littondale in 1942 cycling with friends from Rochdale  
Rediscovering Littondale in 1964 while competing in a Vintage Sports-car Trial and gravitating towards Litton with Mary when out in the car at weekends for many years.

We had aspirations to live in the country, traveling these dales to find an unspoilt building which hadn't been over developed Elbeck Barn filled these requirements we bought it two days after it was advertised in April 1980 from Ron and Margaret Walker who lived in



Elbeck House and had been using the first floor of the bawn as a pottery.

We employed a local Builder to execute the rudimentary conversion and completing the additional work ourselves.

We have always been interested in Oak country furniture

To Celebrate The Year 2000 I have made an carved armchair in local Oak bearing Roman numerals M.M.

Our home is furnished in the same period as the building the only concessions to modernity being the kitchen and bathroom.

Hobbies:- Mary loves Gardening and Walking  
Tony Restoring and Driving  
Vintage Cars. Reproducing 17century Oak furniture.

## Elbeck Barn

### Occupants:

Tony Oldham Born Rochdale, Lancashire

Mary Oldham Born Newbiggin by the sea

Tony first discovered Littondale in 1942 while cycling with friends from Rochdale, rediscovering it in 1964 while competing in a vintage sports-car trial and gravitating towards Litton with Mary, when out in the car at weekends for many years.

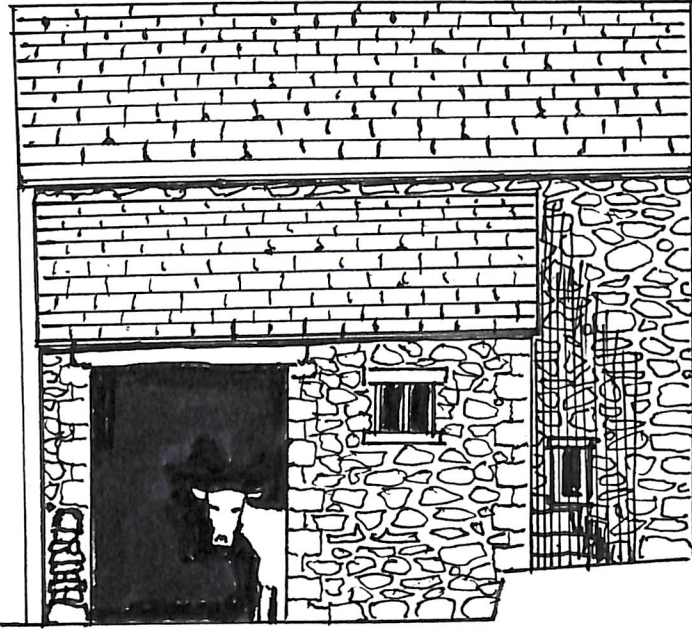
We had aspirations to live in the country, travelling these dales to find an unspoilt building, which hadn't been overdeveloped. Elbeck Barn fulfilled these requirements and we bought it two days after it was advertised in April 1980, from Ron and Margaret Walker who lived in Elbeck House and had been using the first floor of the barn as a pottery. The previous owner was a Mr Bendelow, who began to convert the barn, intending to use the upper floor as a library, and had built a bay above the old barn door, which was to have had a copper roof. This was not in keeping with the rest of the building and so he was forced by the National Park to pull it down. He had also moved the steps from the front of Elbeck Cottage to the back of the barn.

When we arrived, the chimney was partly built, and the upper floor and some windows were in place but little else had been finished and the ground floor was still bare earth. We employed a local builder to execute the rudimentary conversion and completed the additional work ourselves.

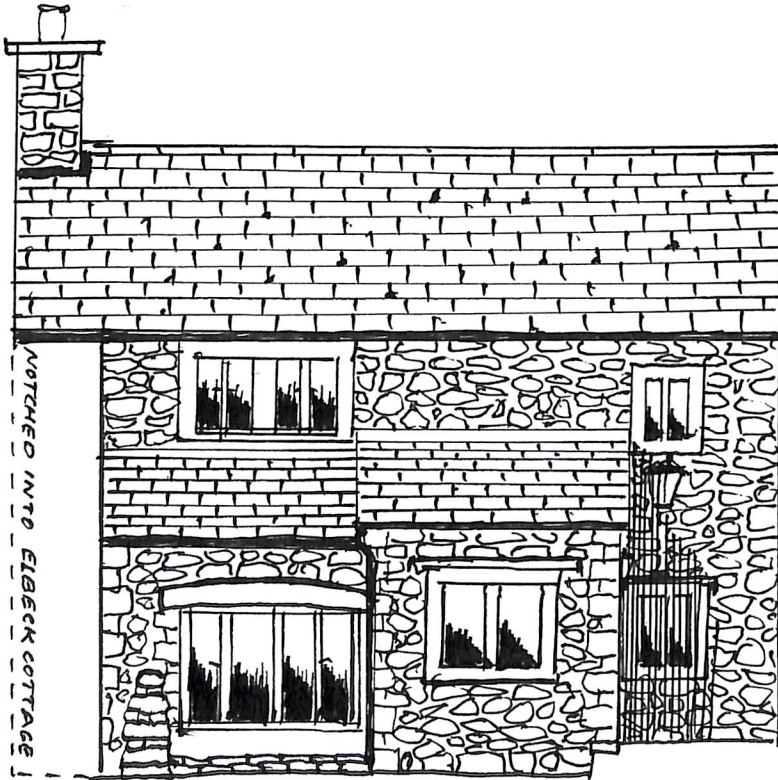
Our two eldest children, John and Christine, had by then finished their education. Christine married and was teaching in Jordan. John became self employed as a woodworker and builder. The youngest, Katherine, was then 19 and had just begun a temporary job in London with an oil company, before training as a nurse and midwife.

We have always been interested in oak country furniture and to celebrate the year 2000 Tony has made a carved armchair in local oak bearing Roman numerals MM. He has also made a reproduction dining table, a carved four poster bed and other items of furniture. Our home is furnished in the same period as the building, the only concessions to modernity being the kitchen and bathroom.

Mary loves gardening and walking and Tony loves restoring and driving vintage cars and reproducing 17<sup>th</sup> century oak furniture.



*Original layout  
of Elbeck Barn*



*1980 layout  
of Elbeck Barn*