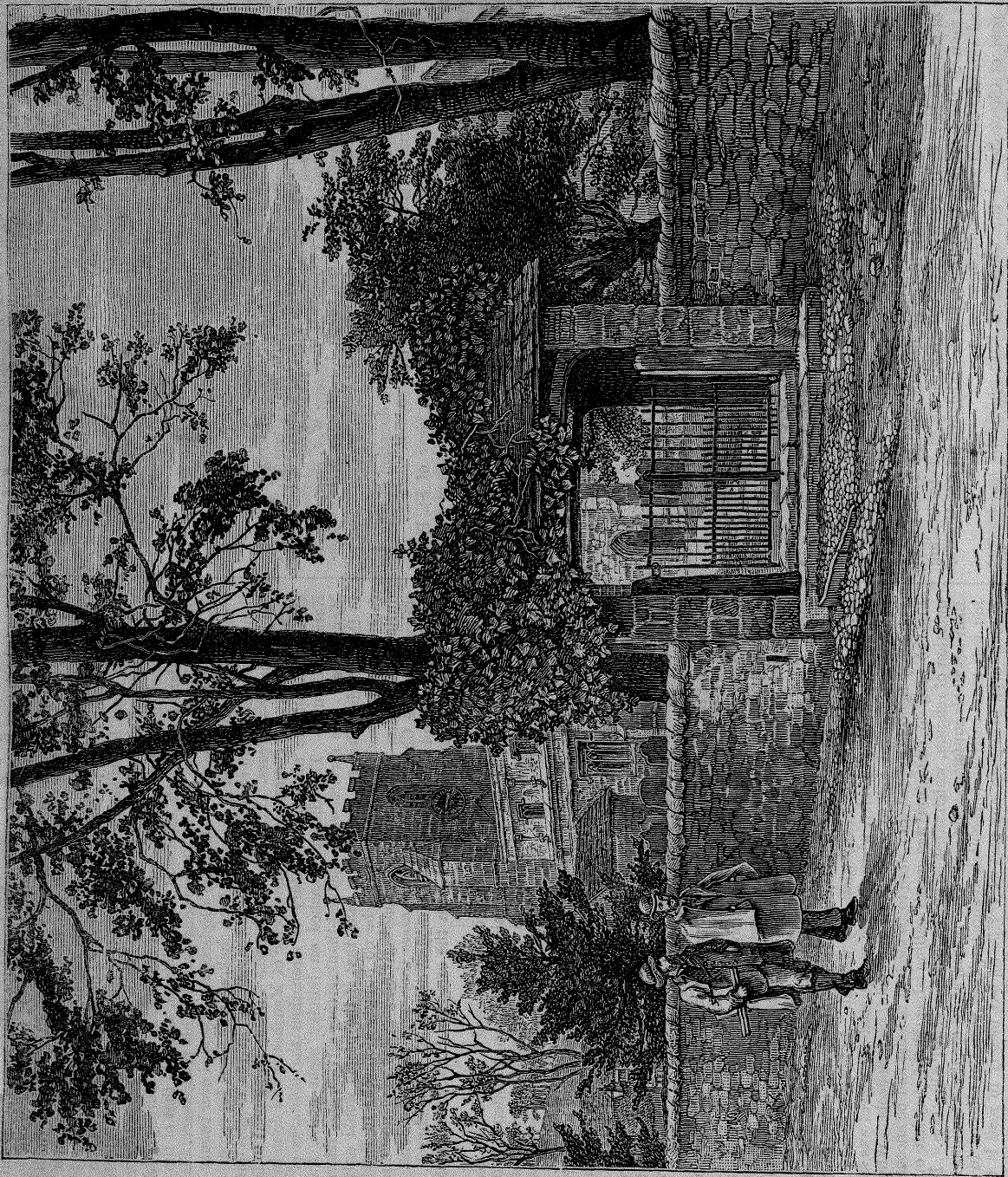


"Points of Interest" was compiled by Tho^s.
Prayshaw, in 1900, at the special
request of J. P. Brocklehurst. A second
edition was issued in 1901, a
3rd. in the same year, & a 4th in 1902.





43794. GIGGLESWICK CHURCH & VILLAGE.



ST. ALKALD, GIGGLESWICK, YORKSHIRE.

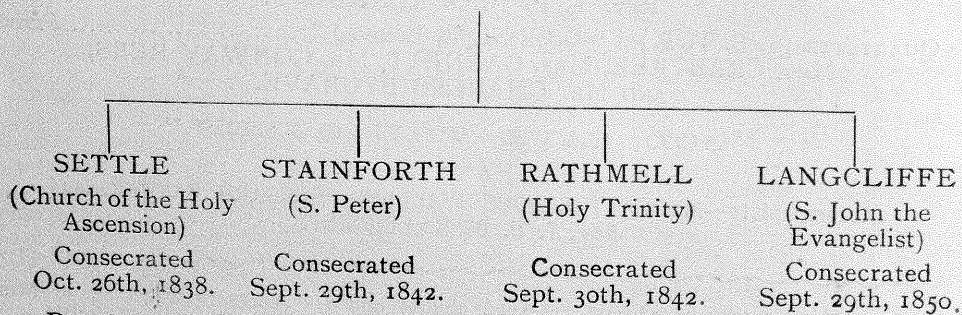




FAMILY TREE by T.B.

Giggleswick Church

(S. ALKELDA.)



"Daughter am I in my Mother's House, but Mistress in mine own."—*Kipling*.

(From the Giggk. Parish Magazine.)

NOTES ON GIGGLESWICK CHURCH.

THE PARISH CHURCH OF ST. ALKELDA, the grey old tower of which has for centuries looked down on the village clustering round it, of course possesses, as a building, far more interesting features than any other edifice in the wide area embraced in the Ancient Parish of Giggleswick; whilst in its interest as an Institution the Church is only surpassed by the far-famed old School through which the name of the village is chiefly known to the outside world.

The "Ancient Parish" comprises the townships of Giggleswick, Settle, Stainforth, Rathmell, and Langcliffe. Each of these townships was represented by a Warden, Langcliffe and Rathmell taking it in turn to send an official. The daughter Churches are as follows:—

Settle (dedicated to the Holy Ascension), consecrated
26th October, 1838.

Stainforth (St. Peter), 29th September, 1842.

Rathmell (Holy Trinity), 30th September, 1842.

Langcliffe (St. John the Evangelist), 29th September,
1850.

Each township also had six representatives on the "Twenty-four" or Select Vestry (Langcliffe and Rathmell conjointly), whilst the Parish Clerk of Giggleswick was, until recently, entitled to fees for marriages and funerals at the daughter Churches. But each of these Ecclesiastical Districts has now become a separate and independent parish.