

Aug. 1964 Early Iron Age.

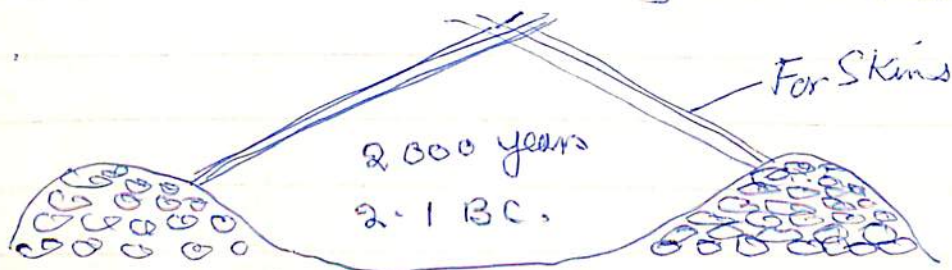
Chapel Field



Saucer Shaped. - Smaller Boulders first
 The Banks, they made by throwing up the
 Soil from the middle, then they layered Stones
 down to keep the bank out.

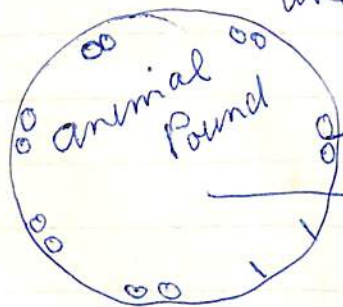
We Stripped layers of Soil over then Reburied
 the Stones to see holes they were made see →
 drawing opposite

2.



Buttresses for the Branches

Two more Circles and Rough Boulder
 and gravel Banks.



Wattle Picket
 here to keep
 the animals in

Nitrogen
 Losing
 Plants where
 Shows that it
 been well manured.
 over the years.



A Piece of Pot boiler }
Probably millstone grit }

B Mesolithic flint.

L C Small flint flake.

L D Small quartz pebble.

M E very small white flint flake.

F Burnt stone.

Q Burnt stone.

H Burnt stone.

L I Blast furnace slag.

J Pot boiler, Sandstone.

K wide spread cinders.

L Piece of stones.

M Pot Boiler

N Piece of Flint

O, Pot Boiler. } Red Sandstone.

Q very small
flint flake

R Left from Centre large burnt stone.
S: Massive Limestone

T: Piece of Slate. 6" x 3".

6 in by 10 in

NBIFlint - found where coal

2. Slate was deeper.
on top of Rock on
Rim of bank - towards middle
of circle 6 in above floor
humus and brown soil.

FOUNTAINS CHAPEL MALHAM TARN.

Aug. 1964.



Piece of Bone
from East END.

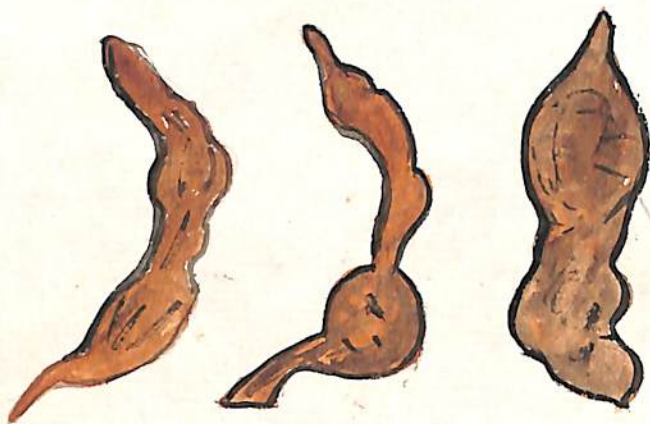
F.

CHAPEL

MALHANTARN.

N.E. END.

AUG 1964.



IT LOOKS RATHER LIKE
THE SPUR GILBERT

FOUND at Currier Hall BUT NOT IN
SUCH A GOOD STATE
AS GILBERTS ONE.

all rusted up
till you can't tell what
it is. ? what was it

Field Studies Council

MALHAM TARN FIELD CENTRE YKS



What does
Tam mean
Somebody asked me.

Tam. (Scandi)

Tam, means, Small lake amongst the Mountain

Fountains Abbey had a Grange at Kilnsey
Kilnsey Chapel.

Bordley Chapel. - Part of this Exists in a Modern Building

Fountains Fell.

Fountains old Chapel.

Chapel Fell. its name - that's the name that has
been handed down thro the years.

Tradition my grandfather told my dad and he
told us I told them, and other People have
done the same. and nothing Showing on the 1460
Map ~~at~~ at that date. So when ~~was~~ we dug
we found there was a foundation in the
place where we had been told it stood, a
Medieval Building ^{14 Century} foundation.
We had to Notice Stones) take Notes and little drawings
Mortar
Study Ground)

In the Foundations

Fountain's Chartley

Dr Raistrick
told us

Chapel.

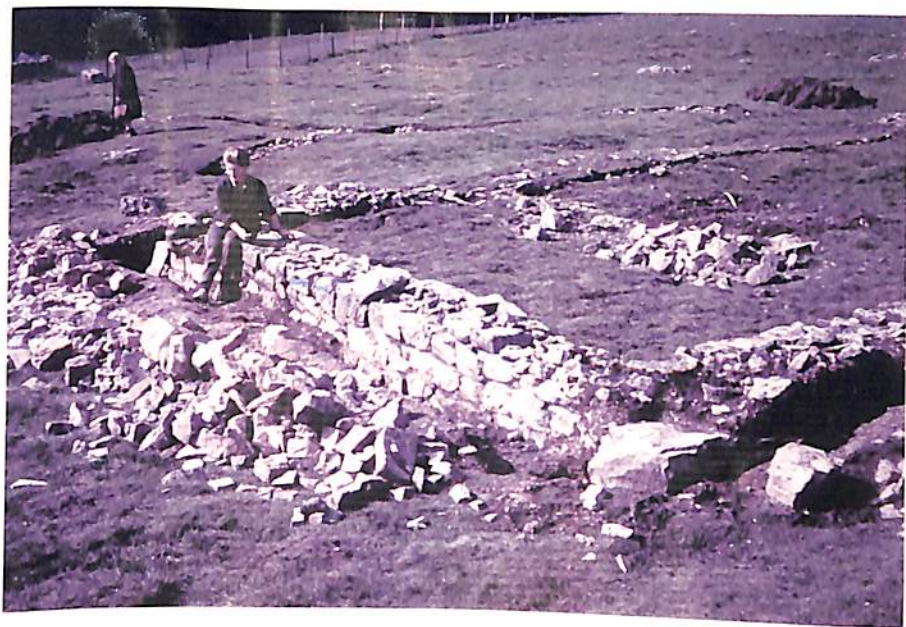
45 Tenements entirely Thatched
with Rushes.

200 - 350 People and Tenants.

Double Wall fillings and Mortar
3 foot left untouched] ^{by the} smaller Stones falling into
the middle, People later took the Stones away
to build their new houses.

Roof of Slate, we found bits of this when
we were clearing in the inside.

Aug 5-12 Dig 1964. Louise on the Wall, of the old Chapel
in Chapel
Fell
Malham
Tarn.



Michael Smith sent me these on Feb 28 1968
He was on this Dig with us, he now lives in
Wales they left Yorkshire, some time, since we did this
1964
in fact.



I found
Flinch
the Saw
up this
breast
in 1965
when
Louise and
I went
for a walk

allan
Butterfield
showed us
a slide
he had
made of
it one day

Slides shown Oct 1974

8 Granges all had 1 Chapel.

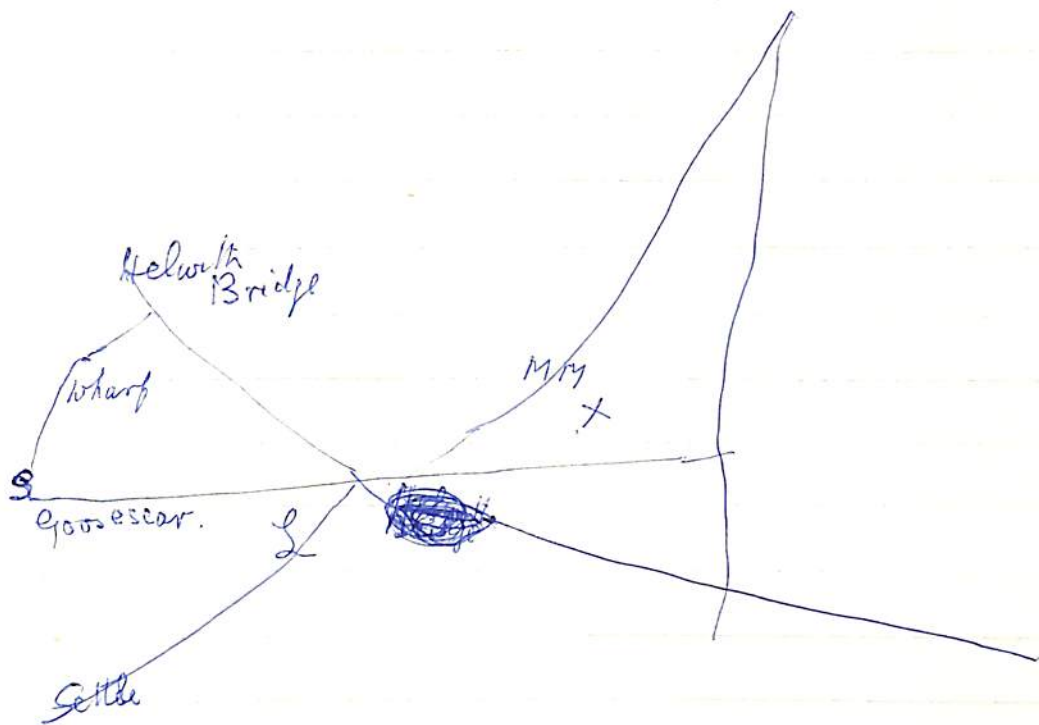
1446 12 Loads of Thatching brought from
Kilnsey. ^{Reeds} Rushes for Thatching; Mall Water-house
payed men to thatch and some to Repair
the Chimneys

Split oak Patches came from Brimham
+60⁰ Rough Plaster Rough Mortar ^{lime} - from Linton

Bordley. accounts for Slates for Bordley Chapel
1390 - to Isobel Bolton her daughter.

1223. ^{at Austwick} Woman who held Land. 2 Slate
Quarries reserved for the Roofing of their Chapels.
Fountains and Sawleys.

2 Slate Quarries at Austwick



Cinders and Ashes from Kilmsey
brought on Pack Horses from Kilmsey - Mastiles.

Came out at Nenside.

Pack Horse Rd Chapel Fell

Old Foundations

Chapel
See Photos -

Enclosed before 1200.

90 Square Miles, Monks of Fountains

Grange at Kibsey, Specialists of Sheep at Kibsey

Chapel Hill - Site. 1964

When I asked why did 3 lots of folks
at East Lake that site to live on.

Dr Raistrick said

Good Sites were not easy to come by
It was limestone and was dry 1.

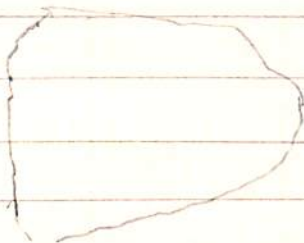
It was far from the hunting and fishing 2.

and handy to the fields once they were
cultivated

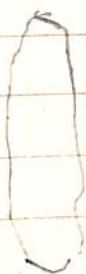
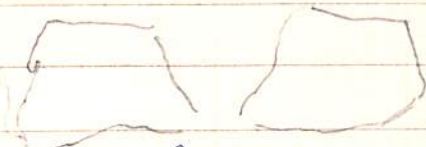
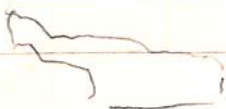
Flint

Chapel Fell.

July - Aug.
1964.





Aug 1.




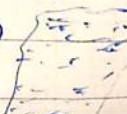


found.

3 Fragments of Pottery. Pot boilers
Charcoal - Black Staining
Flints.

Fragments of
Reddish
yellow →

These were set into the soil  and then they
Popped their Boilers in-to what  ever they were cooking.
(Cooking Pot) Pottery, Chapel Fell Hut 1964.

Pot Boilers Sand Stones got hot on the fire
they were lifted up with  alder twigs from
the fire and Popped into  the Cooking Pots.
Pottery was crude Gritty Paste Sand Pottery
made from the local stuff.
Reddish yellow Cooking Pot.  

Sandhills Garden Aug 1 - 1967.
about where the little ^{stone} Asee was



?

Brong Pin.



Flint.

& spits down.

Sunday Sept 14th 1965.

Just after 5 P.M. Michael Smith called he had had 3 lads out for a walk they had gone to Victoria Cave, and he had been telling them about Ancient History, and he has got many flints and he wanted them to see some, he decided he would call and ask me to show them some, so they know what to look for I showed them a selection of various sorts, and the best small ones they said how do you find such tiny ones like those, I said by using your sharp eyes. Michael said this boy has the sharpest eyes he tells me they were pleased to see them and thanked me very much, so at least they had some manners, they seemed 3 grand lads and interested. Michael said have you seen Dr Raistrick's New Book on Mining, I said I didn't know it was out, he has one and he got Dr Raistrick to sign it. He said it is expensive, so he said I will lend me his copy.

P.T.O.

he didn't

He said he had been to Malham Tarn
recently, and Miss Eaton had asked him
why he didn't come on the dig, as Miss
Ward felt sure he was coming.
He wasn't back from his Austrian Holiday
which unfortunately fell at the same
time as the dig. He had meant
to come. He had caught a germ
out there, and was poorly for 2
weeks when he got back. So that
spoilt the last part of his holiday.
Mr Bremner had shown him my little
flint saw. He thought it was a
grand thing. He said, have you lent
them it, or what. I said I've given
them it has it come from the field
where we dug last year, I started
to tell him about this year's dig, and
tho' I didn't get finished, I'll have to
tell him more later. Time wissed along
and they had to go the lads had
their home work to do. He said to em
now you know what to look for on Ilkley Moor.

Stocking Farm, Presteigne, Radnorshire. 27/2/68.

Dear Helen,

Here they are at last! I promised you photos of the old chapel such a long time ago and I've just got around to getting them! I'm coming up to Yorkshire the week before Easter and may see you then. My kind regards to Louise and your brother.

Sincerely,
Michael.

Fountains 1549.

Estates charged to sell, Royal Estates to Make
into Money.

London Merchants held all the Estates

London Mercers built Fountain Hall out of ?

Ashlons bought nearly all the Estate here^{at} Malham
London - married sister who became
Lord Ribblesdale he rebuilt Mal Water House

1603, freehold in Wharfedale.

Lady Ann Clifford got the Money out of her
father

Duke of Devonshire

Whitakers Craven History.

William Anderson Gressman, aged LXXXV years
That this Turate was born in the Church at
Kirkby Malham, and knew all the Lands in?
for 20 years Space or more, before the dissolution
or suppression of the Mon or Abbey of Fountains
for 20 years before it was suppressed and
dwelt with 3 more Shepherds at a Lodge
in Fountains Fell, and kept the Abbots flock
there.

? Have you ever found these Remains. If any.

The Great Sheephouse at Malham

Arthur Raistrick, Ph.D., M.Sc.

IT IS PART of almost everyone's knowledge that the monks of the Cistercian abbeys such as Fountains, Kirkstall, Rievaulx, and others, were great rearers of sheep and traders in wool. Most Yorkshiremen have stood at one time or another in the lovely arcaded and groined-roofed cellarium at Fountains Abbey and wondered what stores it held when the abbey was occupied. A few have let their imagination picture the bales of wool waiting for shipment to Flanders or Italy, or the many stores purchased in part with the money raised from the sheep farms. The Cistercian monks have frequently been described as great rearers of sheep and workers in iron, a reputation which they brought with them from France when they first sought seclusion in the wilder parts of this country where they could build their churches and tame the rough places. Fewer Yorkshire people, however, would think of Bolton Priory as a place where a trade in wool had played any significant part. Stories of the boy Egremont, of the Shepherd Lord at Barden Tower pursuing the abstruse studies of alchemy and astrology with the help and companionship of the canons of Bolton, the romantic poems of Wordsworth, and traditions like that of the White Doe of Rylstone, all these have created a romantic haze about the real life of the community. Such stories have seized the imagination and flooded popular fancy until it is almost impossible to connect the Black Canons of Bolton with such prosaic matters as trading in wool and lead, coal and iron, and the commoner commodities of everyday life.

The canons of the Augustinian Order founded a small community at Embsay in 1120 at the invitation of Cecily Romille, the wife of William de Meschin, then Lord of the Honour of Skipton. Alice Romille, the daughter of Cecily, married William the son of Duncan, King of Scotland, and used some of her wealth to endow and extend the small priory of Embsay. About 1154 she gave the Embsay canons the manor of Bolton and within a year the canons removed from Embsay and began the building of the priory we now know. The Augustinian canons were priests and at Bolton there were fifteen canons under the rule of a prior. Their duties were to maintain the service of prayer in their church; to serve as priests at a number of parish churches, to be hospitable to

travellers, and to assist the poor. For all the secular work about the priory and their possessions they employed a large body of servants.

Soon after their establishment, gifts of land, estates, and manors were lavished upon them in return for their prayers and spiritual care, and it was not long before they became comparatively wealthy. The care and administration of the expanding estates called for an increased number of secular servants and overseers whose natural instinct to manage and develop each estate according to its nature and capacity was encouraged by the canons and their prior. The production of surpluses above the needs of the priory led inevitably to trade.

In the course of a century the canons had passed from comparative poverty and strict living into wealth and some degree of luxury and ease. The monastic communities were subject to regular visitations from the archbishop and from the reports of these visitations we can learn that in Bolton there was much noise and talking instead of silence and prayer; some of the officials were lax in their duties and the priory, in spite of its greatly increased wealth in lands and estates, was getting into debt. Changes were made and all matters were put into a better order, including the keeping of more careful accounts. It is from these accounts that we can glean something of the dealings in wool just at the turn of the century, from about 1290 to 1325.

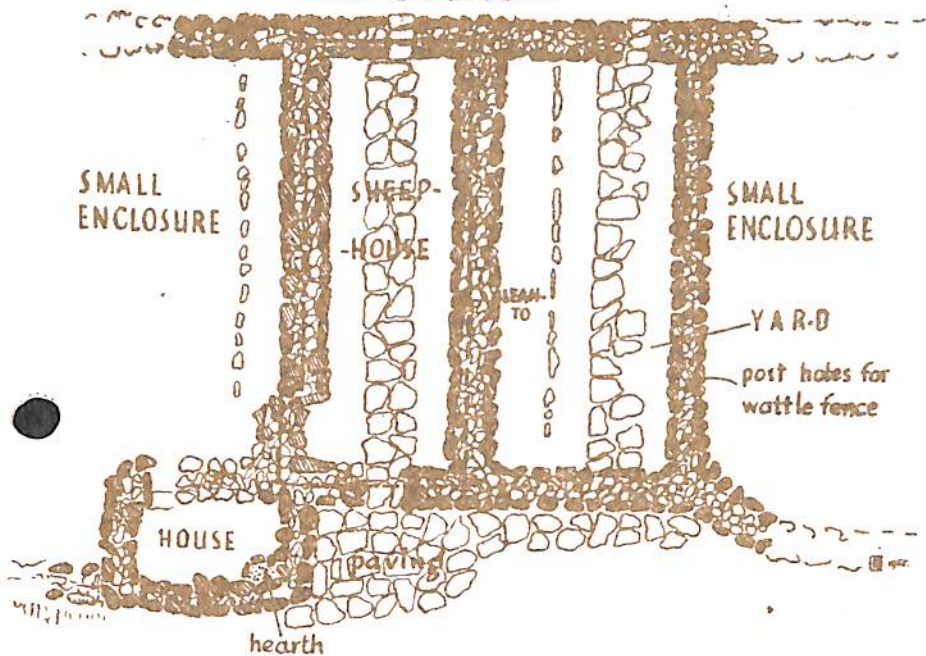
Among the many estates given to the canons was included the Manor of Malham East, where they were neighbours for two and a half centuries to the Fountains Abbey tenants who occupied Malham West. Bolton had much rough pasture on Malham Moor, on the parts called Prior Rakes and New Close, where they were in closest neighbourhood with the very extensive sheep farms belonging to Fountains Abbey. Whether or not they were inspired and instructed by the example of the Fountains sheepmasters we do not know, but during the second half of the thirteenth century they established their sheephouse on Prior Rakes. Several small items in their account book mention the beryery or sheephouse, but it is only during the last two years that we have learned much about it, mainly through the discovery and excavation of its foundations.

Before discussing the details of the sheephouse let us look at the slender notices in the accounts and other sources, from which we can reconstruct something of the life and routine there.

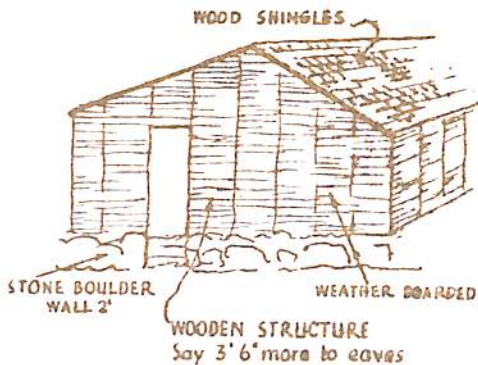
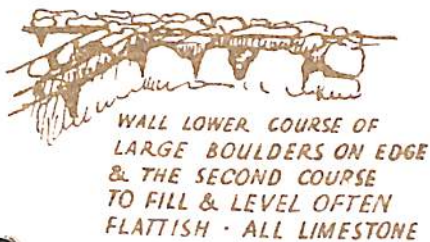
The priory had two sheephouses, the one on Malham Moor established during the thirteenth century and another on the estate at Appletreewick which they had purchased in 1200. At the sheephouse they kept a sheepmaster and four foldmen, and on the two estates they had a varying number of sheep, averaging over 2000. We might quite well visualize the Malham flocks as being somewhere about a thousand strong. Normally the sheep ranged the pasture of Prior Rakes, New Close, and Cross Field, the rocky ground east of the Dry Valley and extending across Gordale as far as the boundary of Bordley. On the north the boundary was approximately Mastiles Lane and provisions were made in agreements with Fountains Abbey for the friendly return of animals straying from this pasture towards the hills.

After crops had been taken in the fields around Malham, some of the sheep could be folded on those parts held by Bolton and on some of the common fields, by which the land got the enrichment of their manure. The wild nature of the ground and the climate made close oversight a constant necessity on the

GREAT ENCLOSURE



SHEEPHOUSE ON PRIOR RAKES - MALHAM YORKS.



high pastures. The shepherd's year followed a rigid pattern in which the first major event was the lambing season. Preliminary to this there was the constant care of the ewes to keep them in the best possible condition through the winter and in this care the sheephouse would occupy a central position. Lambing was mainly achieved within the sheephouse and the shelter of its little enclosures, and the shepherd was allowed a supply of candles for use in his night watches with the sheep. Weakly lambs needed special care and cows' milk was provided for their nourishment. A very typical entry in the *comptus* is, in 1290, 'milk for lambs 19s. 1½d.' and if we remember that the relative value of money then and now is more than twenty-five to one, this sum represents a very considerable amount of milk. On the neighbouring Fountains estates the lambs were, as soon as possible, taken down to Chapel House, Kilmsey and reared there on cows' milk so as to leave the ewe milk for the use of the monastery. From many items in the documents it is clear that the prime purpose of the ewes was the production of milk for cheese-making. Sheep were only used as meat when they became old, and in the case of Bolton Priory the wool crop from them was more or less incidental.

Soon after lambing the sheep were divided into flocks which are returned as wethers, ewes, and hoggets. The sheep were subject to maggot and other infections and in some years the murrain was very bad. The common remedies to counteract the fly were mercury and verdigris and entries are common of the form - '24 lbs green paint (verdigris) & 12 lbs quicksilver from Boston; 32s.' or 'Oil, tallow and fat for smearing £4.10.7½. Quicksilver and green paint bought at York; 22s. 9d.' or 'Oil, tallow and verdigris for smearing the sheep £10.2.0'. The regular smearing or sauing of the sheep against the weather also used quantities of tar mixed with the fats.

Early summer brought with it the washing and shearing for which the shepherds were generally provided with new aprons called barmcloths. In the 1290 account 'washing, shearing, barmcloths and women milking the ewes' cost 15s 2½d. After the shearing a treat for all the helpers was provided and in 1302 this treat cost 3s. The sheared wool was packed but not sorted and stores of pack sheets had to be provided, both coarse and fine. The Cistercians sorted their wool into four grades and secured good prices for the best grades, but the Augustinian canons sold their wool in bulk as one grade only, except that in some years they kept out the black wool for separate sale. In 1315 their sale was 10 sacks (of 364 lb) and the price they got was 12 marks (£8) while in 1325 they were getting £10 a sack. Fountains Abbey in 1315 secured good prices for their sorted wool, for best, 21 marks, middle, 12 marks, and locks 9 marks, so that Bolton was getting the price of middle quality. As their own production of wool was not very high, and wool was fetching a high price, the canons bought in wool from their tenants and other local farmers, and by this addition were on some occasions selling as many as forty sacks a year, taking their profit on the resale. Their customers were Lombard and Flemish merchants, John Rescevant's Society, Bernard Manired, Peruchi, Frescobaldi, and others. In 1290 the priory received loans from John Rescevant & Society to the extent of £349 3s 4d. some of this being secured against wool to be delivered in following years. In that same year there was a heavy purchase of twenty-eight sacks three stones of wool for £195 4s 3d, to set against a resale of twenty-nine sacks for £260, a profit of over £60.

From these miscellaneous accounts let us turn to consider the sheephouse in a little more detail. Among occasional items there are, 'Repairs to sheephouse at Malham with boards, 6os; 700 boards bought for the same 22s. 6d.' 'Mending the old sheephouse at Malham 14s. 1000 boards at the sheephouse 3os.' and so on. The sheephouse was used for lambing and also for milking and cheese-making (in 1310, 147 stones of ewe milk cheese was used at the priory), so might be expected to be a large building with either smaller buildings or some small, well protected crofts and folds near it. The actual washfolds were situated near Moon Bridge in Malham, where the name Prior Folds and a number of ruins are still found, but nothing in that area would satisfy the picture of the sheephouse that emerges from the study of the accounts.

On the west side of the road from Malham to Malham Tarn House, between the top of the steep hill and the first gate on to the open moor, a limestone scar runs along the road side and this is part of Abbot Hills in the larger area of Prior Rakes. Behind this scar is a long narrow valley with another limestone road Scars on the west of it. This valley widens at the north end into a large grassy area which is enclosed by a massive gravel and rock bank, probably at one time the base of a wooden fence or stockade. At the south end of this big enclosure there is a mass of foundations rather like a grid iron in arrangement - three long, narrow rectangles or perhaps it could better be described as a rough square, about 50 ft square, divided lengthwise into three narrow compartments. At the south-west corner there is a smaller rectangular enclosure attached to it, and on each side of the main structure there is a small croft enclosed by heavy gravel banks. This we believe is the foundation of the sheephouse.

Excavation has shown the true nature of the building and it is possible to suggest a reasonable restoration of its original form. The building really falls into two main areas, each about 48 ft long inside, and the west one 14 ft and the east one 20 ft wide inside the walls. The east one has a rough partition wall of stones set on edge at approximately 6 ft from the west side. The whole building is formed with walls of peculiar structure. The walls are 6 ft thick, made with very large limestone boulders set on edge in two rows and the space between carefully filled with other large boulders, the whole being just over 2 ft high. The careful levelling of the top of these walls shows them to have been foundations for the wooden structure above them. In the eastern wall and in the short wall between it and the mid wall at each end, there are deep post holes at every yard which could have supported a very strong fence. The north wall of the buildings is continuous with the south wall of the enclosed pasture and there is a doorway into the two main parts of the buildings through this wall. If we take first the western building and summarize a lot of detail, it proves to have been a wooden building based on these massive foundation walls. Down the centre of the building from the north door to a corresponding one in the south end there is a massive pavement of very heavy limestone slabs making a gangway 4 ft wide. Each side of this is an earth floor, and it would agree with what we know of medieval sheephouses if this earthen area were strewn with rushes or bracken, or with a wooden slatted floor, and used as the 'standings' for the ewes. Here they could have shelter in winter or stormy weather or be tended for lambing. The eastern area has its narrow part marked off on the west side of it, and it seems likeliest that this was a lean-to against the side of the main building, forming a part shelter to what was a fenced yard. This yard again has a great central

paved way, but no door at the south end. It could be a fine weather milking pen and a very useful yard to the main building. At the south-west corner of the whole structure there is a small house place which was probably the house of the sheep master. In excavating these buildings a few iron nails and a fine but very early carpenter's adze were found. In the house there were areas of charcoal marking a fireplace and a few small sherds of pottery.

On the edge of Broad Scar, on a limestone shelf not far away and overlooking the site, there was another house about 18 ft by 10 ft, carefully built in the same way, and in this some more articles were found which tie in well with the idea that this was the house of the fold men. Some pieces of ruddle for sheep marking, an iron knife, and a whetstone for sharpening it, are all characteristic of the shepherd's trade. A fireplace was well made, and near it some ironwork included the 'labels' or lugs for the handle of a wooden bucket. These are all of early type and would agree with the general date of occupation between the fourteenth and fifteenth centuries. It may, however, be the case that this is the sheepmaster's house, and the hut at the corner of the sheephouse was the 'bothy' in which the foldman on duty was housed.

There can be no doubt that the main buildings were wood, as all accounts for the repairs are for the supply of boards and for payment of the carriers for carrying boards to Malham and for giving them a gratuity when doing so. One part of the *comptus* mentions shingles for the roof at Malham, while the sheephouse at Appletreewick was thatched. This would be reasonable as heather suitable for thatching would not be easy to get on Malham Moor, at least on that part which was held by Bolton Priory. Whether the walls of the sheephouse were boarded right up to the eaves or had a small space open at the top for ventilation we don't know. Some medieval pictures show a sheephouse with its walls carried only about half the height, but these are from the south where winters would be less severe.

At several places on the moor there are small enclosures, one of which when excavated revealed a small hut in a sheltered nook of a limestone scar, with a banked fold in front of it, and in the hut the usual pieces of ruddle, a fine whetstone, and fragments of iron which might have been a knife. This was probably a shepherd's temporary fold on New Close, where he could bring his sheep to look them over and treat them for maggot or renew their markings without having to drive them back to the sheephouse.

The sheephouse was in use during the fourteenth century and probably for much longer, but the accounts become very scanty after that. We know that the priory was still trading in the fifteenth century, but at the Dissolution in the sixteenth century the Malham estates were sold to the Lambert family and we have no detail available which includes the sheephouse. It looks as though it might have fallen into disuse during the fifteenth century, but some research might correct this view. As soon as it was abandoned the wood of which it was made would be carried away as being of great value in such an area, and the foundations would very soon be grassed over and forgotten.

Through the kindness of Mr Dudley Illingworth, of Haulith Hall, on whose land it lies, it has been possible to excavate the site and also to leave parts of the walls exposed sufficiently to make the plan clear and to show the peculiar structures employed.

Simplest Form of Settlement

Bronze age site

very few with precise date.

Single Farms.

Wild Grain

Wild Fruit.

Cultivated Grain

Good Climate

drier and much warmer at present.

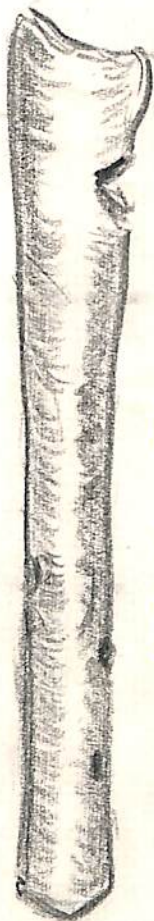
Valley Bottoms Glacial Lakes.

Different levels due to warmer climate.

No clear date.

It did go into the Iron age.

The Malham Iron age Pipe.
Seaty Hill Pipe 1950-51
is in Leeds City
Museum.



found in the Burial Mound
on Seaty Hill.
was presented by the Generosity
of Mr Illingworth who's field it
was in, and the Council for
Promotion of Field Studies.
Curator Drown has cooperated
with Mr Todd to secure the recording
of its Music. I have heard the Record
from Dr Raistrick Lepton Music
There is in Craven Museum a
Plaster Cast of the Pipe.

→ This was made from the tibia of a sheep
Bone
(leg bone)

H Wares
→

M^r Williams, the music Organiser wants to read my M.T. book when you have read it. He has seen that musical instrument & thinks it was a kind of whistle for calling animals in. It has

3 notes very shrill. He & his 2 elder children had their dinners on the Hall mine in the summer. They walked over from Arncliffe.

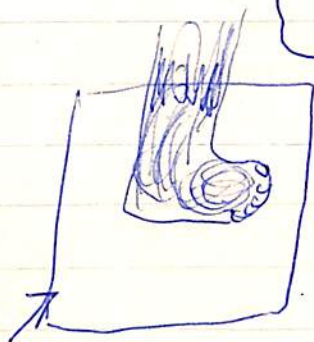
This is about that ^{Musical} Pipe that was found at Malham Moor. see Book about Archaeology.

from our Mary at Huddersfield

Seeing this had to do with
an earlier dig. I thought
I would put Iron age Pipe.
W m

See over
Page.

Malkham Seaty Hill
found 1950



Stand on it
and then tie it
with a thin strip of
leather

a piece of leather
would be used for
shoes they would



Round like
this

They wore Capes which fastened
with Toggles made from bones.

Tondon. Big Aug 5th 6th 1965.

and Smelt Mill Chimney

Huts of the Iron age are nearly all Circular

— — — Romano British are Rectangular.

Note for Reference Mr R told us this

20 Varieties of Pottery have been found in Grassington

So there must have been lots of exchange ^{area} or
bartering.

Walled Passage

Scar

Passage



Walled thro
to Scar
here

Dropped
stones
from
off wall
9 m high

Wid wall

ravel Bank under Soles

fallen stones
off Scar.

slant

pyd up Right

Project

pyd

August 5-1965
— 6 —

Jordan Edge.

In Mr Moons field

A Wall Passage had been Seen.

So when we got Permission.

We had this to Clean.

anything off the floor we could trace

and specially look for the Stones at the base.

Any Flint, anything ^{at all} made of Stone

Iron, Any teeth, or ^{any} old Bone.

When these were collected.

They'd to ^{be} put in the lab to be inspected.

Someone was singing one more round to Cross

When out of the Wall Passage,

The Sods they did Toss

The Passage was Narrow

No use for a Barrow.

So out came the Steps.

To carry the soil

Then a Voice Rang out the

Coffee does boil.

So down go the Tools

and out comes their Pot

In no time at all, they'd drunk the all lot.

In Mr Moon's field Jordan Edge
when ~~the~~ ^{the} ~~tor~~ got permission we had ^{this} to Clean
A wall Passage which ~~was~~ ^{Someone had} seen.
Any thing off the floor we could trace
And specially notice the stones in the base.

Any flints any Stones
Any teeth or ~~any~~ ^{old} Bones.
When these we'd collected
were ^{to be} put in the Lab, to be inspected

Someone singing one more Riwenta Cross
When out of the Passage the socks they toss
The Passage was narrow
No use for the barrow,

So out came steps to Carry the Soil
Then a voice Rang out the ^{Coffee} does boil.
So down goes their tools
and out comes their Pot.
In no time at all
They'd drunk the oil Pot.

Some gathered Stones from down in a hole.
These were to mend the Big hole in the Wall.

John who was visiting helped these to Carry
And Placed at the feet of the Waller called
Henry.

Somebody Shouted Some like us Please.
and soon he was fused with a handful
We all paked Stones in here and there ^{of these}
This all helped to do the Repair.

We had four visitor this Monday
And they to, all came to the old Chimney

John took back to Malham Allans sister
while Richard, He stayed till the ^{friend} very end.

4th 30ish

5ish

2

Sunday Evening we were entertained by.

Chris he gave us a look.

at some beautiful slides he'd took.

Views of Houses, & Scenery from a Church Tower
Plants and Fungi.

and a little girl holding a flower.

Boundary Crosses that his recording.

Cup Ring Stone
Mending up 1 top
Cross

evening.

Now Allan he to gave us a View
of things of Interest both old and New.
Marks on Rocks, left by ancient Races.
^{Sites} Sights and Seats at various places.

This Dig was in

The
Knowe Fell, on High Frenhouse
Farm.

Aug 7th - 11th 1965