



[Report a problem](#)

© 2015 Google

“.....the sign of the bell....” Giggleswick c1680





Little parlour;

Bodystead;

Great parlour

1707 inventory William Hall?

"Wm Hall" is marked here on Letsome's 18thC map.

The Royal Oak is the conversion of an older house.
Two storey and three bays (bodystead and two parlours).





Royal Oak
Country Inn & Dining

MARKET PLACE

CASK ALE WEEK
COME IN AND CELEBRATE
24 SEP - 4 OCT

Royal Oak
Plenty more to
enjoy
Happy guests only
Cask Beer
in
the
bar



Golden Lion

TTC 1671 door
1691 fireplace
Three bays
Originally three storeys.



Old parlour.

Bodystead.

New parlour.

Inventory; Thomas Carr, butcher, 1718.



The Talbot

Another three-story building. The cellars and inn yard remain. Fireplace c1710







Bishopdale House

– a house and shop. Datestone 1661 (?)

Inventory 1686; John Hargreaves, a draper



Rural farmhouses



Upper Green, Settle

Two storey with four main rooms is very common

Swainstead 1676 T.J.S

(Inventory; Stephen Carr Dec. 1725)



Great P ; Bst ; added Low P



Green Farm 1689, Rathmell

Inventory; William Bankes Sept. 1710



Little parlour chamber



Little parlour



Little parlour; "kitchen" with porch; great parlour
+ service rooms

Stackhouse

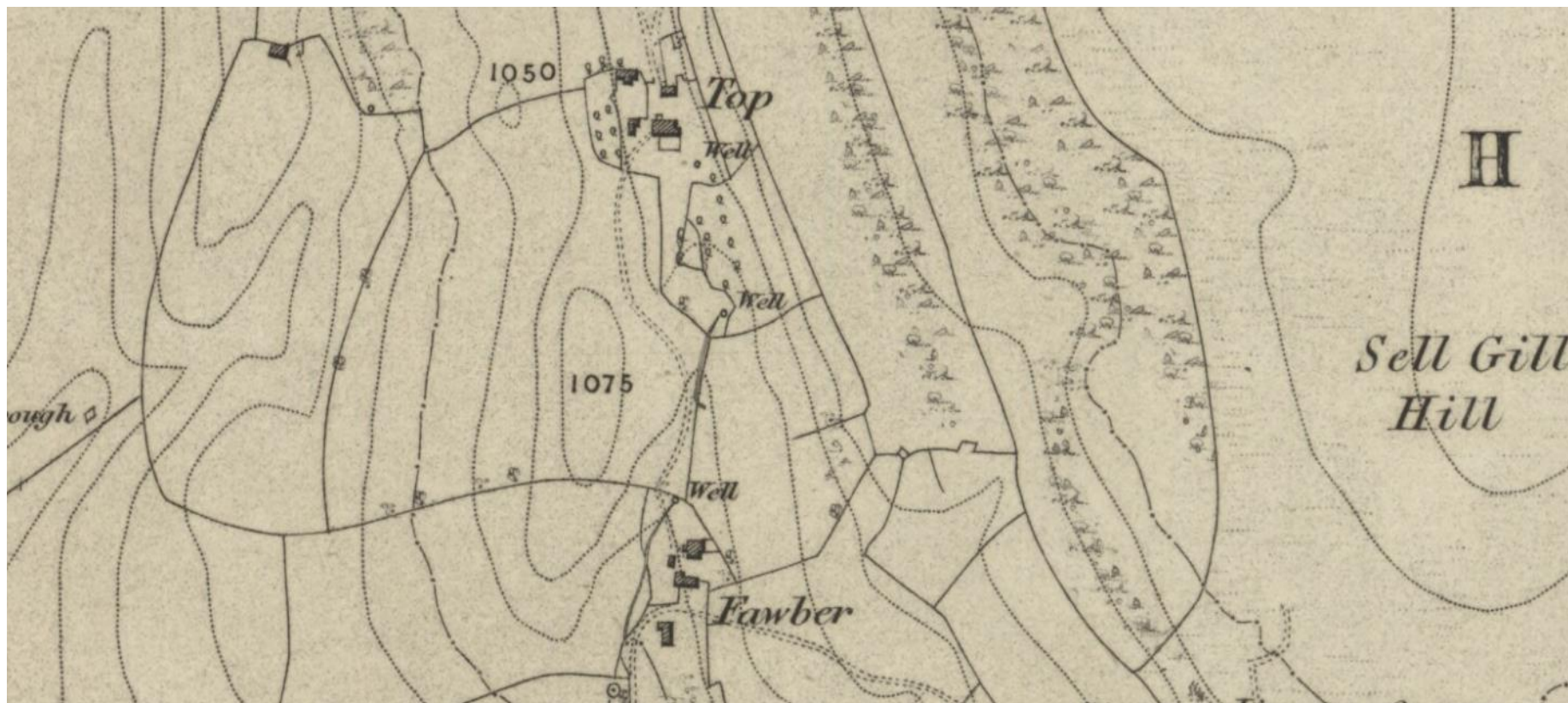
Inventory; Henry Brown 1731

“Brownscroft” 1682



Kitchen, bodystead, parlour;
lofts and a garret





Fawber in upper Ribblesdale

Fawber (Horton) and its two houses



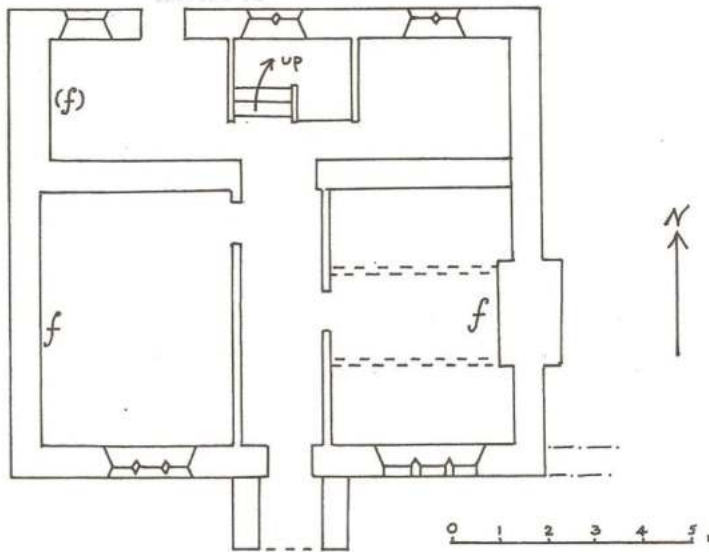
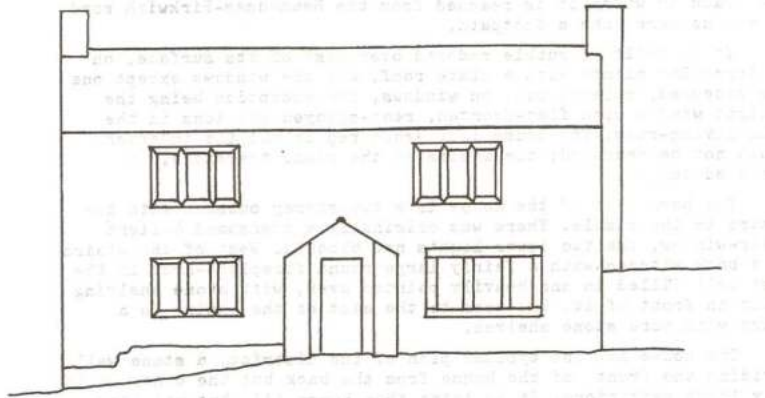


Fawber; the older house now a barn.



Fawber farmhouse c1720.

Inventory; Henry Wilkinson Dec.1746



Bodystead and parlour with chambers above.
Buttery and kitchen in an outshut at the rear.

Style and plan is typical of early 18th century.

Large value of livestock (20 Cattle, 96 sheep)
and use of peat fuel continues.

Marshfield House (mid 18th century townhouse in Settle)





Photo credits:
D. Johnson
J. Illingworth
Google

