



Sun chambers, garrets and parlours.

What inventories tell us about
local houses 1660-1750



Vernacular buildings





March the 23th 1721.

John Lawson 1724

Shew an Appraisment made of the Goods and Chattels lately belonging to John Lawson of Tottis Deceased by us whose names are underwritten.

1 SUPERFINE purple and Apparrell	2:10:0
In the Garret over the House 120 busshes woods	6:00:0
over the parlour 1 pair bedstocks & Cord 2 Old Chests Beds with the bolsters	0:09:0
In the Sun Garret One flock bed 1 Chest 1/2 bolsters One Coverlet 2 Blankets and tick forms	0:09:0
1 Ark	0:06:8
Beans and Oates	5:10:0
In the Garret over the porch One Trunk bed	0:02:0
With the North Chamber One Table and frames	0:02:0
In the Chamber over the House bedstocks with hanging Cord &	0:16:0
One feather bed and Bolster and 1 flock bed 1 blanket	0:16:0
20 rugg and 1 Old Quilt	0:16:0
3 Chairs	0:03:16
One Long Table	0:01:2
2 Stools	0:02:0

Datestones in Settle and the 17thC rebuilding.

In Settle 19 datestones show a peak in rebuilding in the 1670s



Harrison and Hutton; using probate inventories c1700

1. Agricultural valuation of corn,cattle,sheep by regions;

Craven livestock is mostly in cattle (cows, oxen etc) Sheep are fewer.

There is still some arable land.

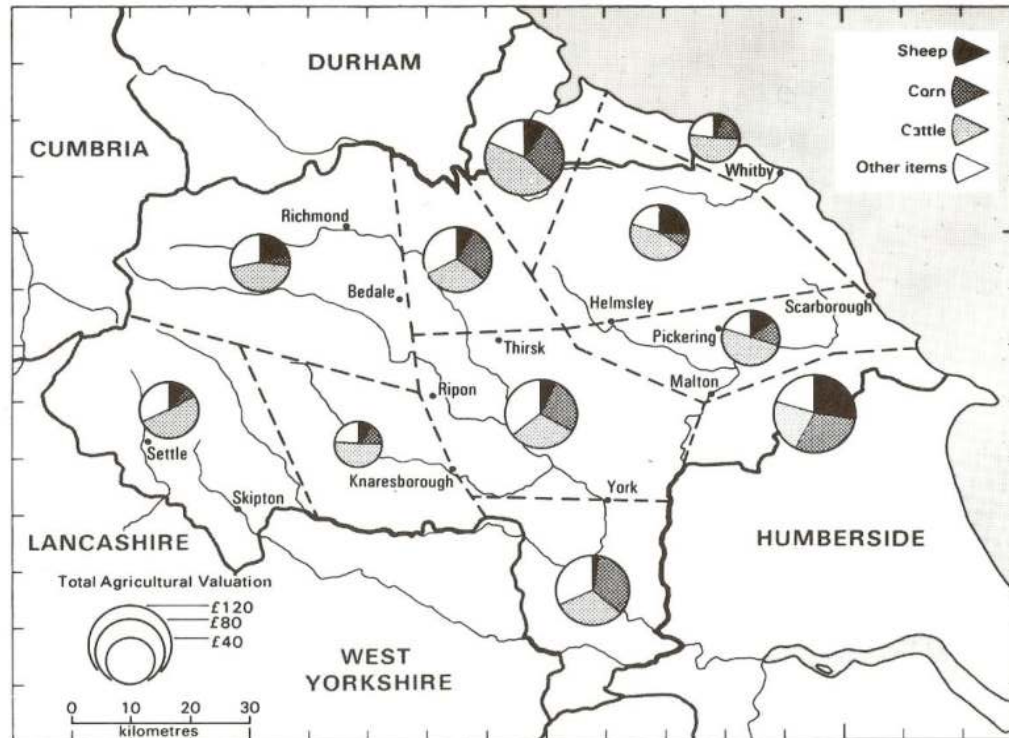


Figure 10.2. Probate Inventories 1709-10. Average agricultural valuations and proportions represented by corn, cattle, sheep and other items, by regions.

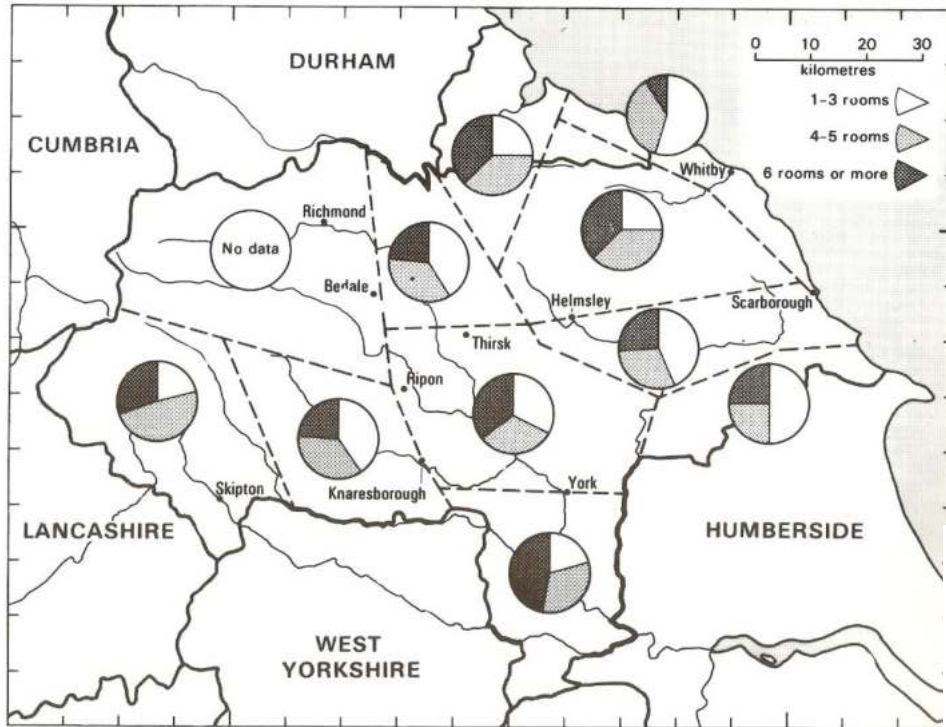


Figure 10.4. Probate Inventories 1709-10. Number of rooms in houses, by regions.

2. Number of rooms in houses

Craven has a large proportion of houses with 4-5 rooms
 Few houses have only 1-3 rooms.
 A good number have more than 6 rooms

3. Number of storeys

Craven has a good proportion of two-storey houses and few single storey houses. Vale of York has a lot of single storey.

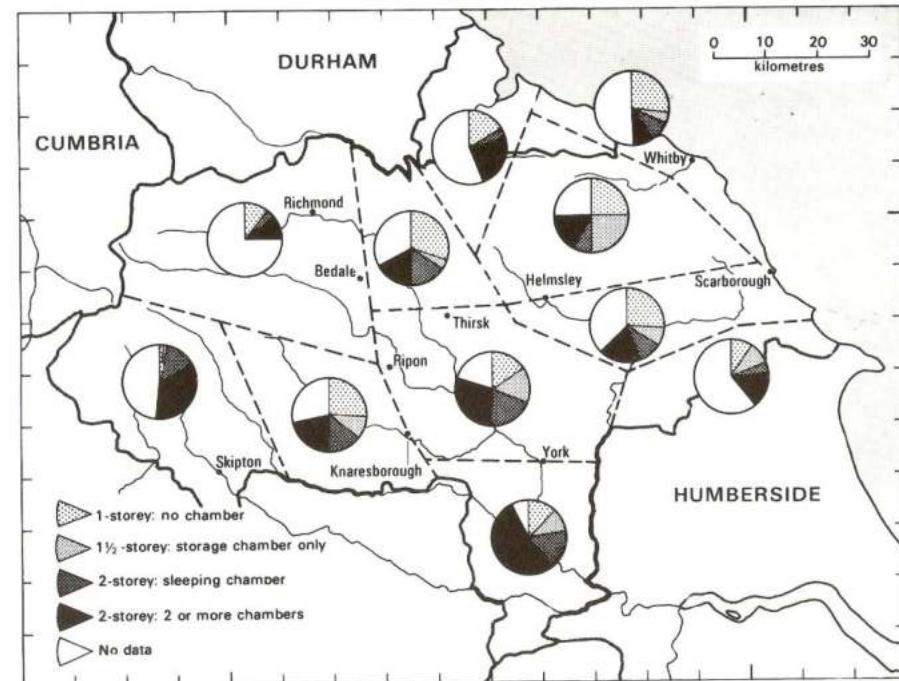


Figure 10.5. Probate Inventories 1709-10. Storeyed and unstoreyed houses, by regions.

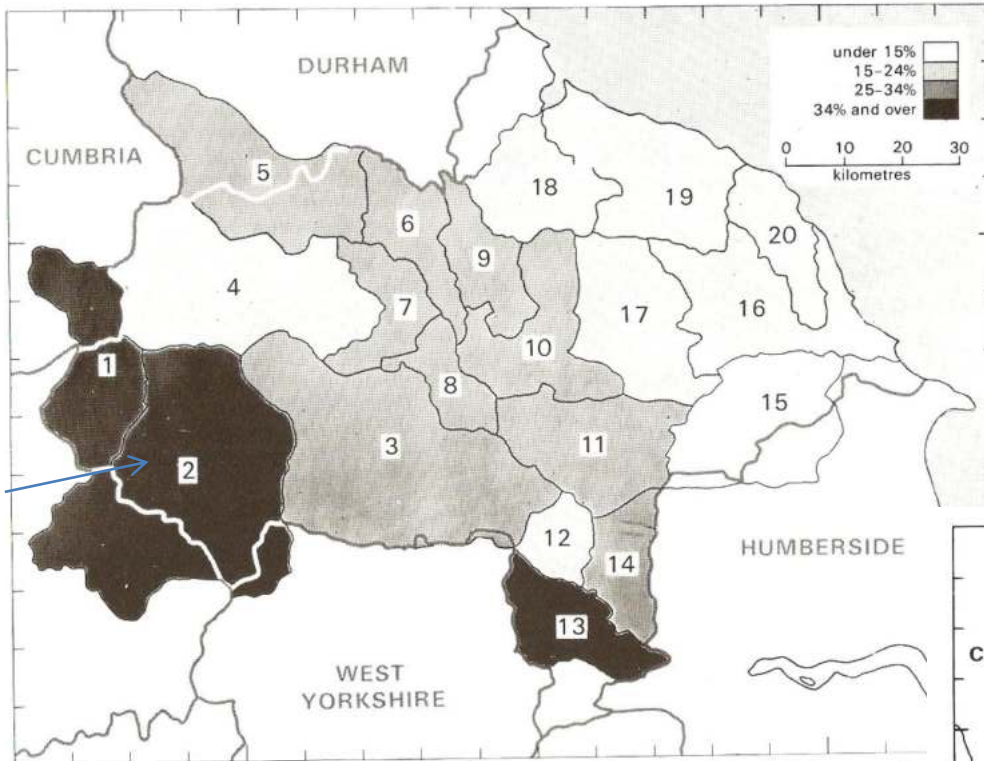


Figure 10.1. Hearth Tax assessments, 1672/73. Percentage of houses with two or more hearths, by wapentakes

1 Ewcross	8 Hallikeld	15 Buckrose
2 Staincliffe	9 Allertonshire	16 Pickering Lythe
3 Claro	10 Birdforth	17 Ryedale
4 Hang West	11 Bulmer	18 Langbaugh West
5 Gilling West	12 Ainsty	19 Langbaugh East
6 Gilling East	13 Barkston Ash	20 Whitby Strand
7 Hang East	14 Ouse and Derwent	

4. Hearths in Craven.

Over 34% of houses had two or more hearths and had to pay more Hearth Tax in 1672/3.

5. Kitchens in inventories

Only 15% have a kitchen.
Service rooms eg buttery or milkhouse are often small size.

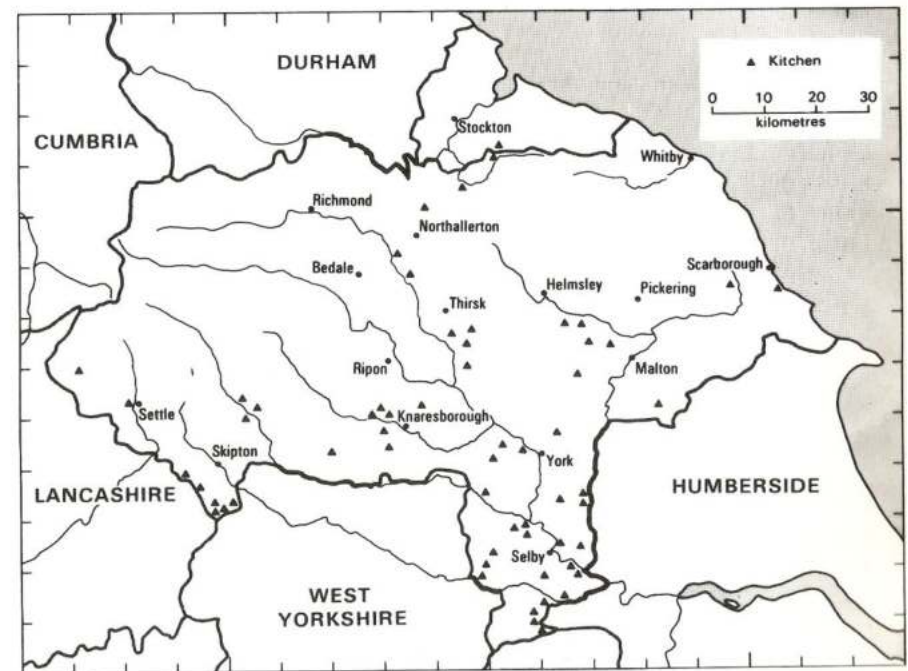
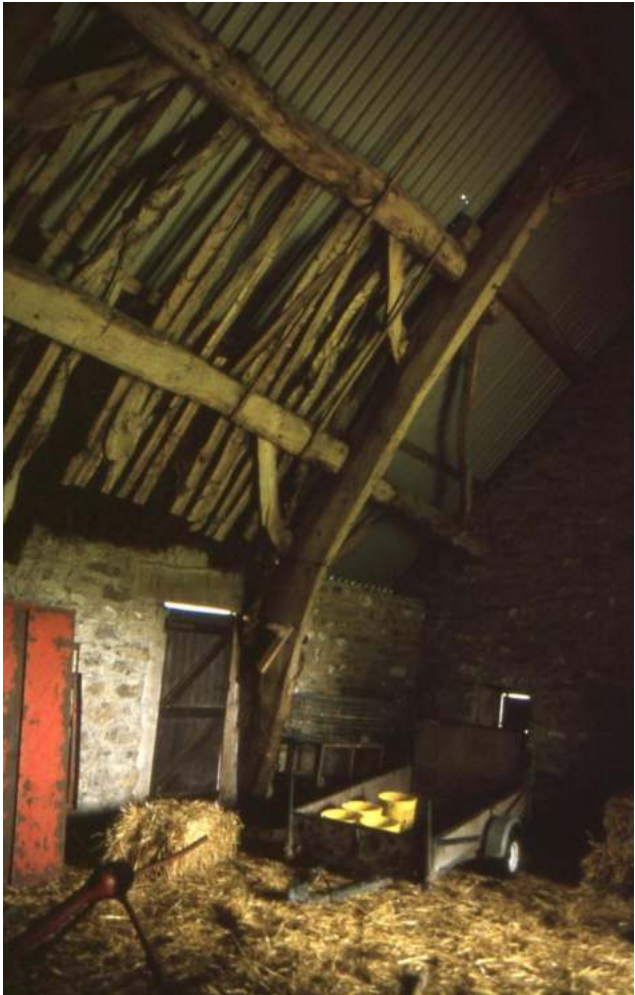


Figure 10.6. Probate Inventories 1709-10. Distribution of kitchens.

Vernacular houses and probate inventories; one example



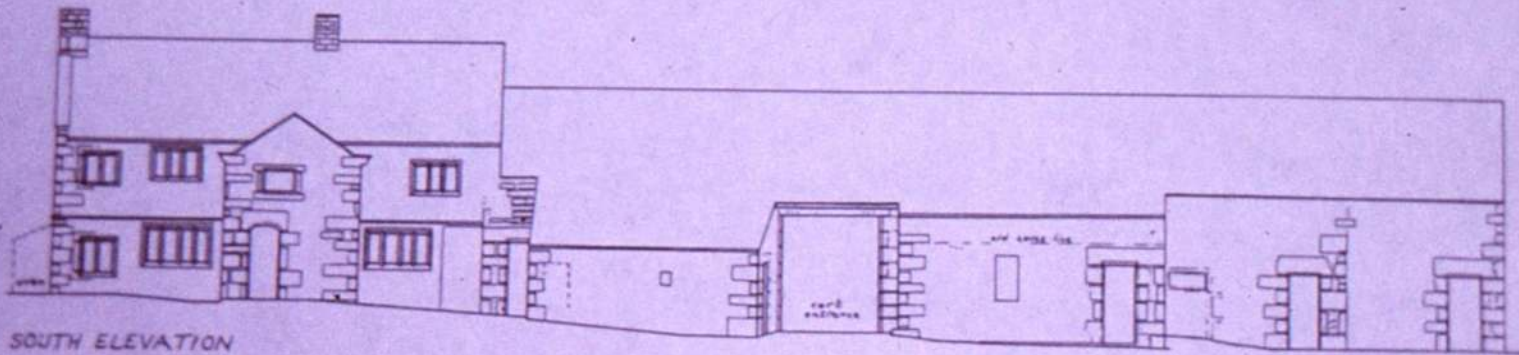


Thatched cottages
Bronthwaite, Sileden,
N^o Kaighley

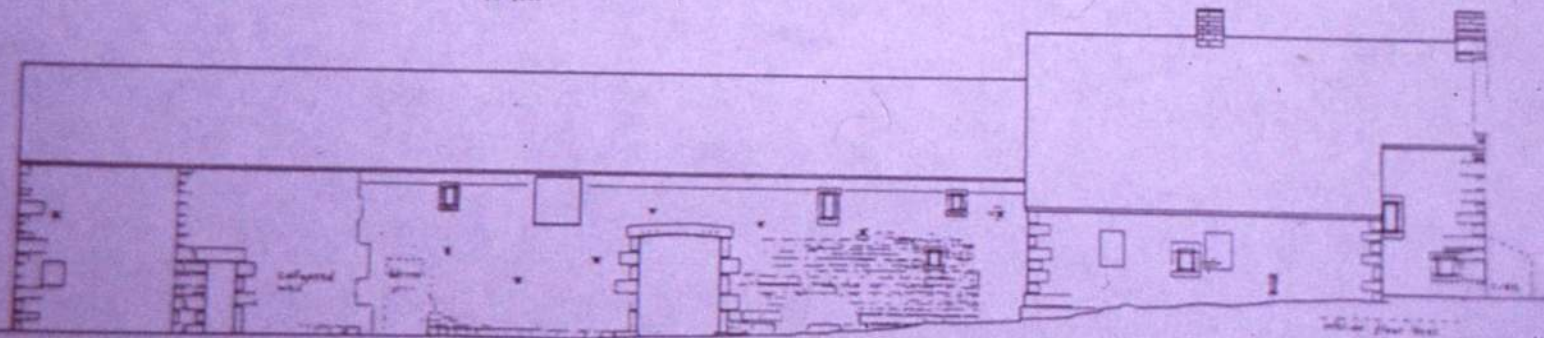
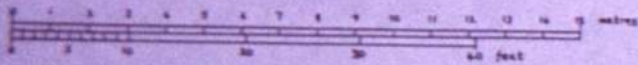
Thatched roofs



CROW TREES
SILSDEN MOOR SE 025495



SOUTH ELEVATION

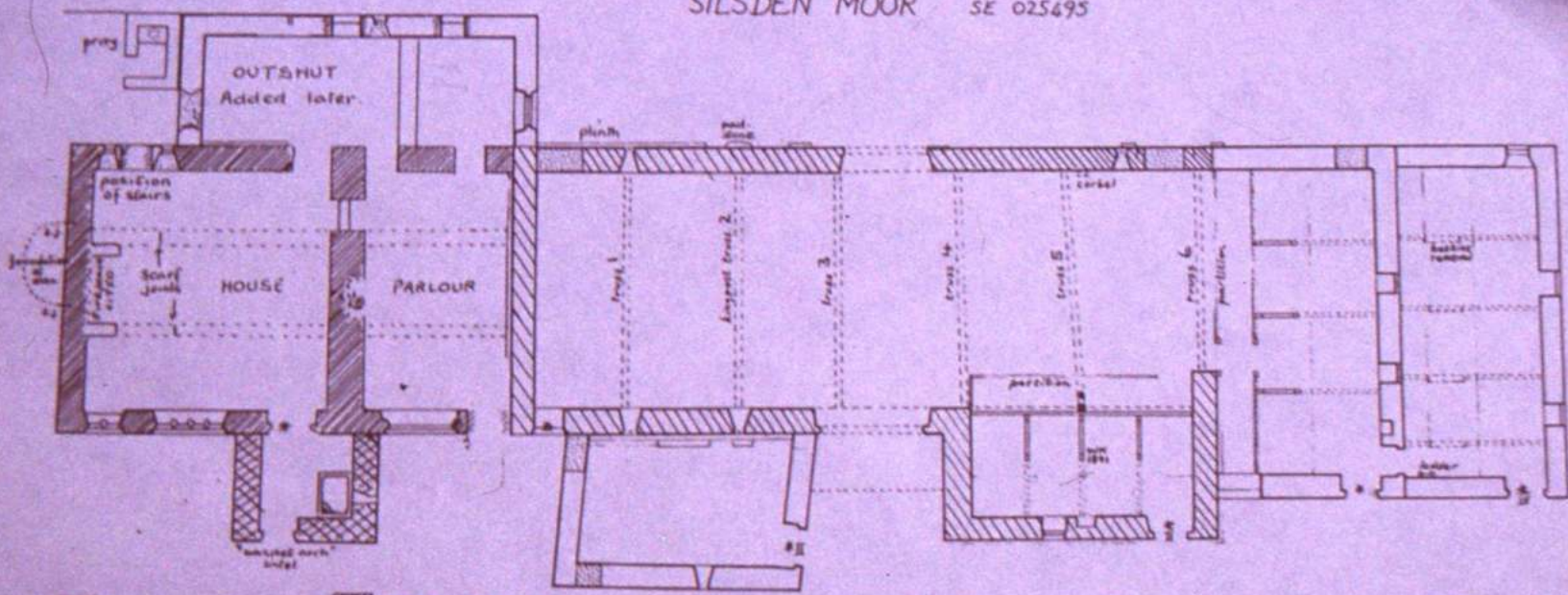


NORTH ELEVATION

17

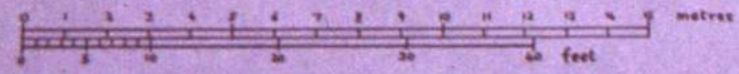
CROW TREES SILSDEN MOOR

SE 025695



- blocked openings
- house c1680s
- barn prior to construction of house
- porch c1690s
- 20th century Work
- later additions

- * door lintel with straight head + wide chamfer, c 1690-1750
- II extended to be quoin and lintel in one piece
- more neatly cut ?c1800



HENRY STIRKE late of Silsden Moore 11th Jan 1694/5

Imp his purse and apparrell	10	8	0	
parler				
Item one stand bed and furniture belonging it	2	0	0	
" two tables two formes three chayres one chist one safe				
one little Xoffer two buffets	1	16	6	
Item in the house one Cubboard one dishboard two tables and				
one longe settle five chayres one salt chist & salt pye five				
stooles and two formes	3	5	0	
Item six pannes three brasse potts	2	10	0	
" in pewther and brasse	1	15	0	
" two ranges tonges Jack-spitte and rackes bakestone and				
other ironstufte belonging to the fire	15	0		
Item in beefe and tallowe	1	5	0	
" one bed and furniture belonging two Chayres one Chist one				
Coffer and one desk	2	10	0	
" in the Chamber two beds with bedding two Arkes one Gymblin				
one Chayre one old bed spakes and boards	4	5	0	
" in the porch chamber one bed and bed clothes and two chists				1 10
" more four Arkes and one chist	2	10	0	
" in felkes & other Tymber	9	10	0	
" sadles and other furniture & sakes	1	5	0	
" in bookes	5	0		
" in Oafe meale and malt	3	0	0	
" in lynnen and canvish	1	10	0	
" five oxen one bull six twinters five kyne and five calves	60	0	0	
" seaven Mares and horses	14	0	0	
" sheepe	14	0	0	
" in Hay and Corne	20	0	0	
" ladders spades shovell forkes and rakes	10	0		
" one Swyne and Hennis	1	0	0	
Item hammers Javelin hackes requibles Axes and other tooles	1	0	0	
" in Bad Iron	1	0	0	
wheelles and Cartes and Coopes	7	10	0	
yoakes teames plowes harrows and other furniture	2	10	0	
" <u>leather barke woode and other furniture belonging the</u>				
<u>trade</u>	15	0	0	
" one old Arke Cheese presse tames and other hustlement				5 0
" more in bonds and other specialties	21	13	6	
				200 0 0

William watson Henry Stirke George Stirke William Stirke



Settle; a market town with typically tall buildings.



Probate inventories for the town of Settle indicate very large 17thC houses, with 3 storeys , 2 or three bays long.





Older three storey buildings were rebuilt in 18thC as two storey



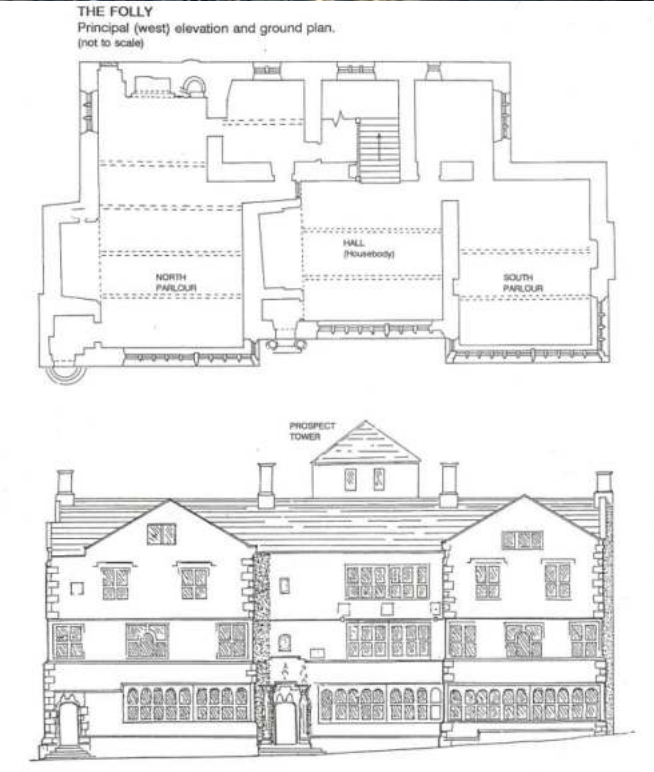
OS map c 1847

And before town hall c1830





The Folly 1679 R.L.P
Inventory 1695



John Cookson (inventory Dec. 1690)

Two storey and three rooms long (JC 1663)





The White Horse (three inventories)





Porch?

Sun chamber
Outchamber over shop
Shop

