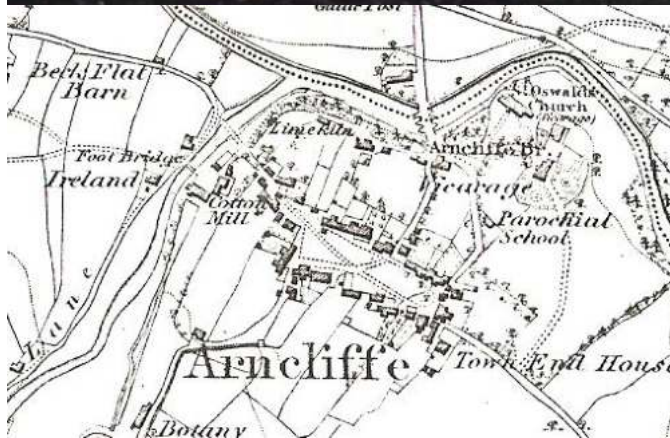
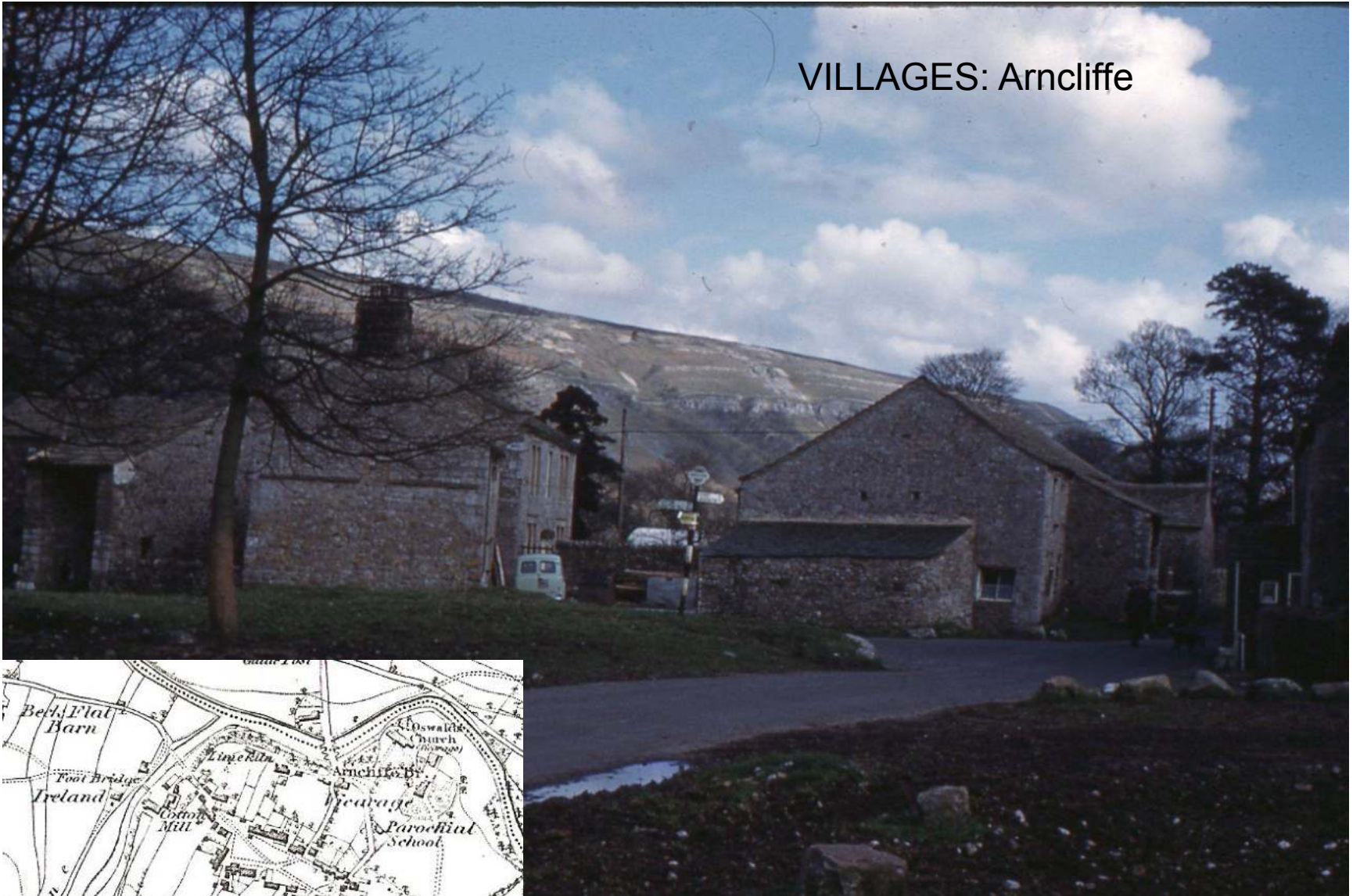


Low Bradley. Old Hall 1678



VILLAGES: Arncliffe



Conistone



Starbotton



STAMP-COLLECTING IN STARBOTTON

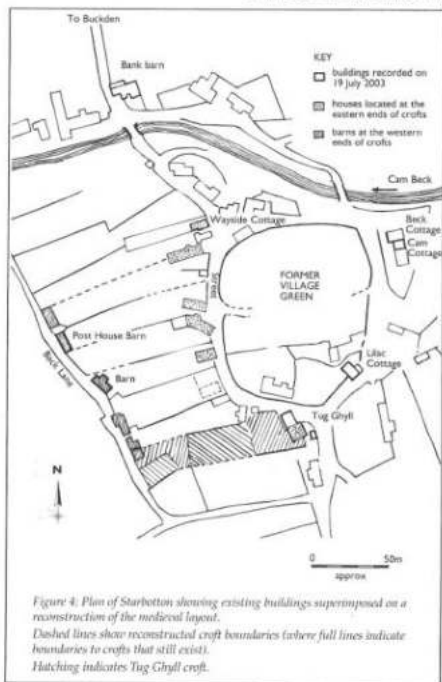


Figure 4: Plan of Starbotton showing existing buildings superimposed on a reconstruction of the medieval layout. Dashed lines show reconstructed croft boundaries (where full lines indicate boundaries to crofts that still exist). Hatching indicates Tug Ghyll croft.



STARBOTTON FLOOD, 1686

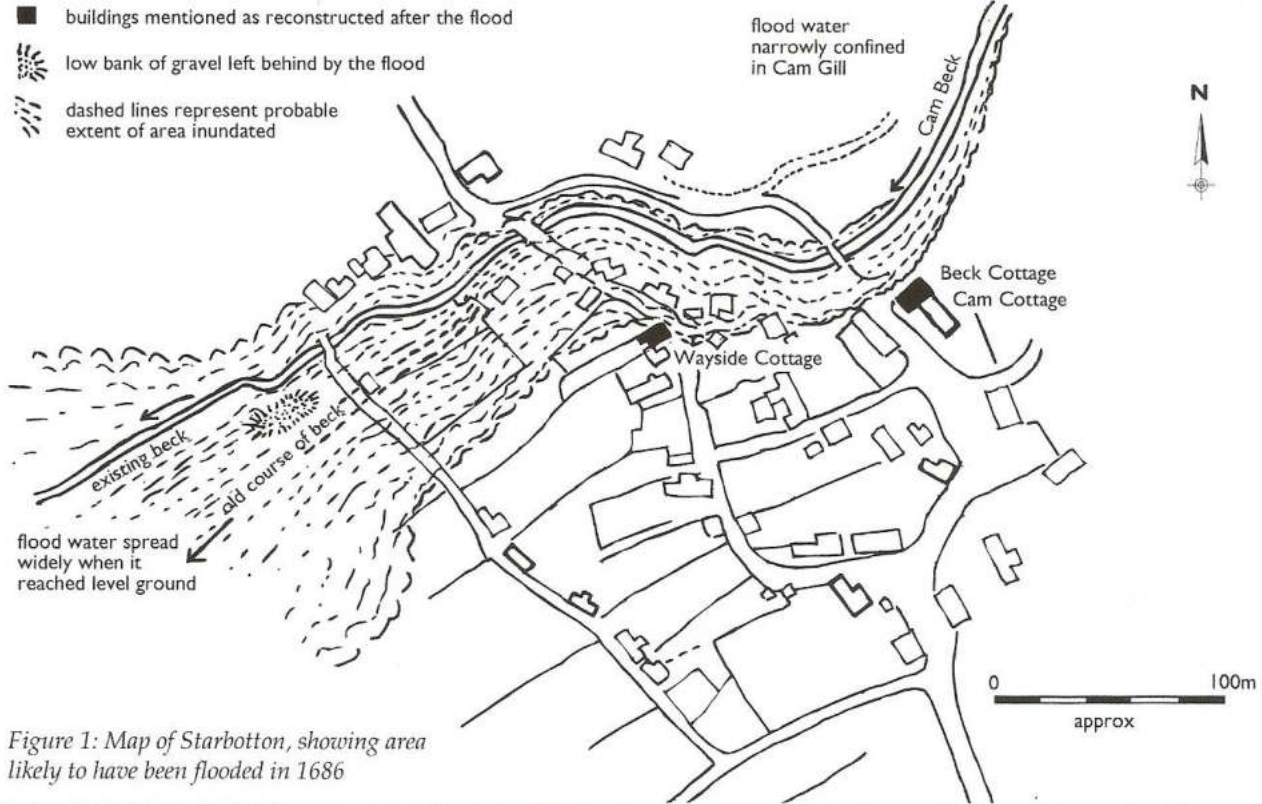
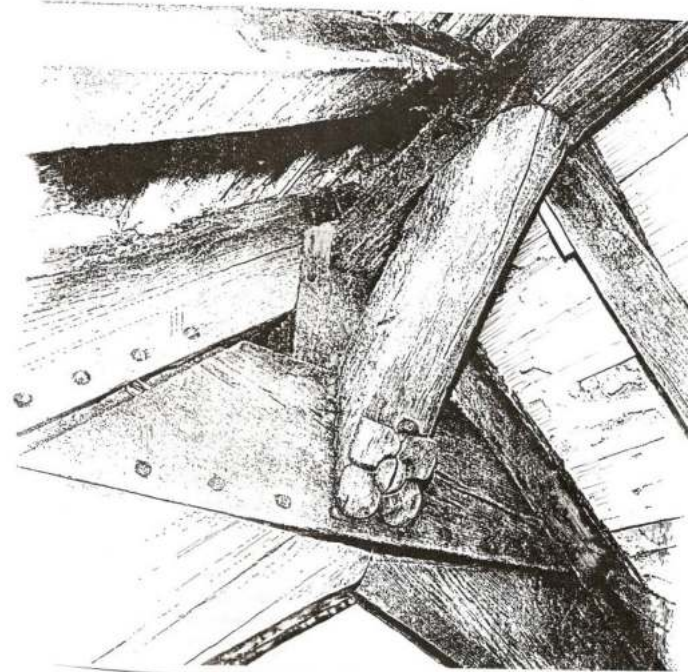
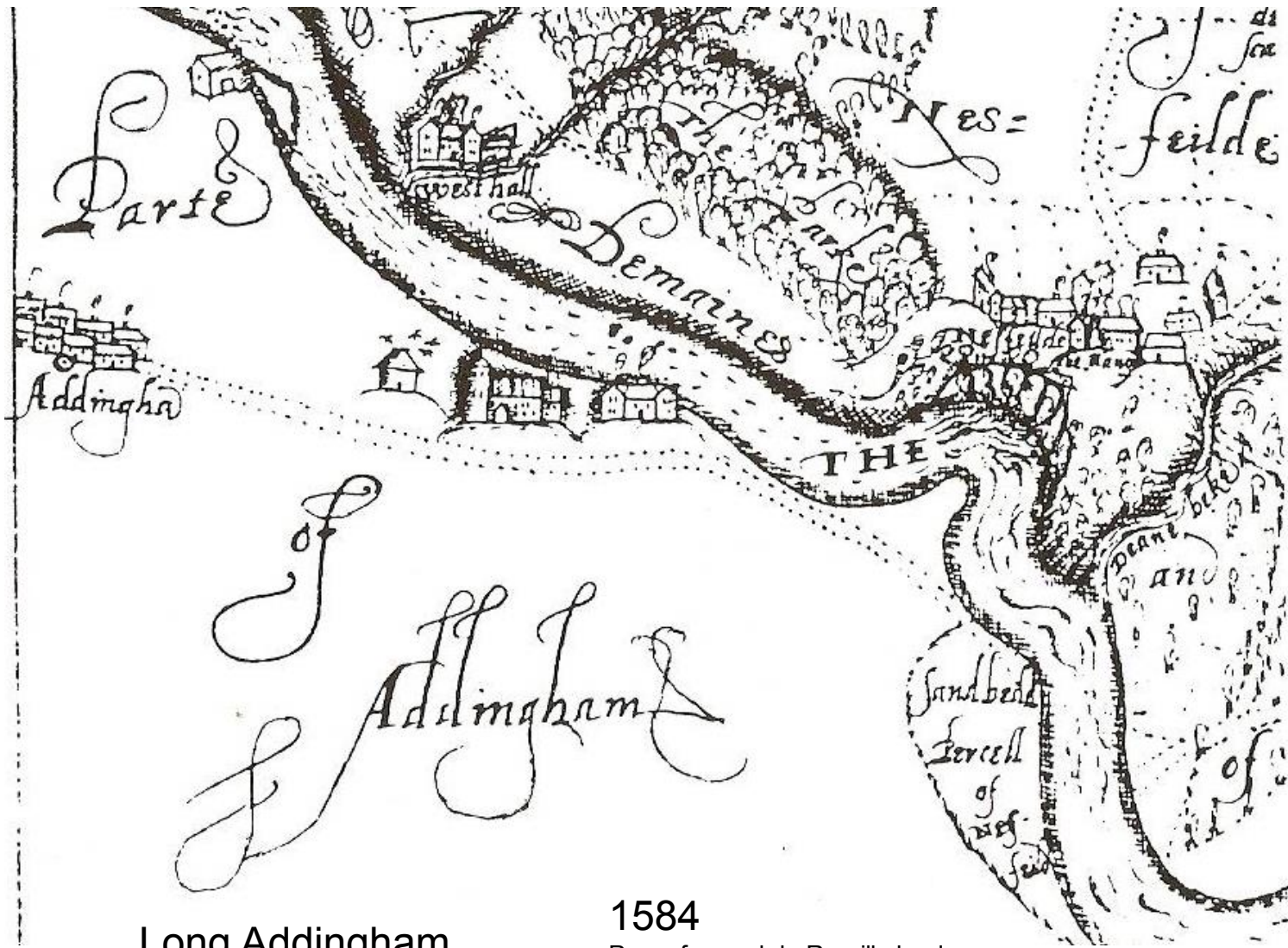


Figure 1: Map of Starbotton, showing area likely to have been flooded in 1686

Figure 2: Beck Cottage, Starbotton (left), looks older than its neighbour, Cam Cottage (centre), but is not. It was built using old door and window masonry salvaged from a flood-damaged building, and was probably crammed up against Cam Cottage to avoid a more flood-prone site to the left. The roof lines of both houses were raised later, and most windows in Cam Cottage were modernised in the eighteenth and nineteenth centuries.







Long Addingham

1584

Percy fee and de Romilly land

Addingham



Long Preston

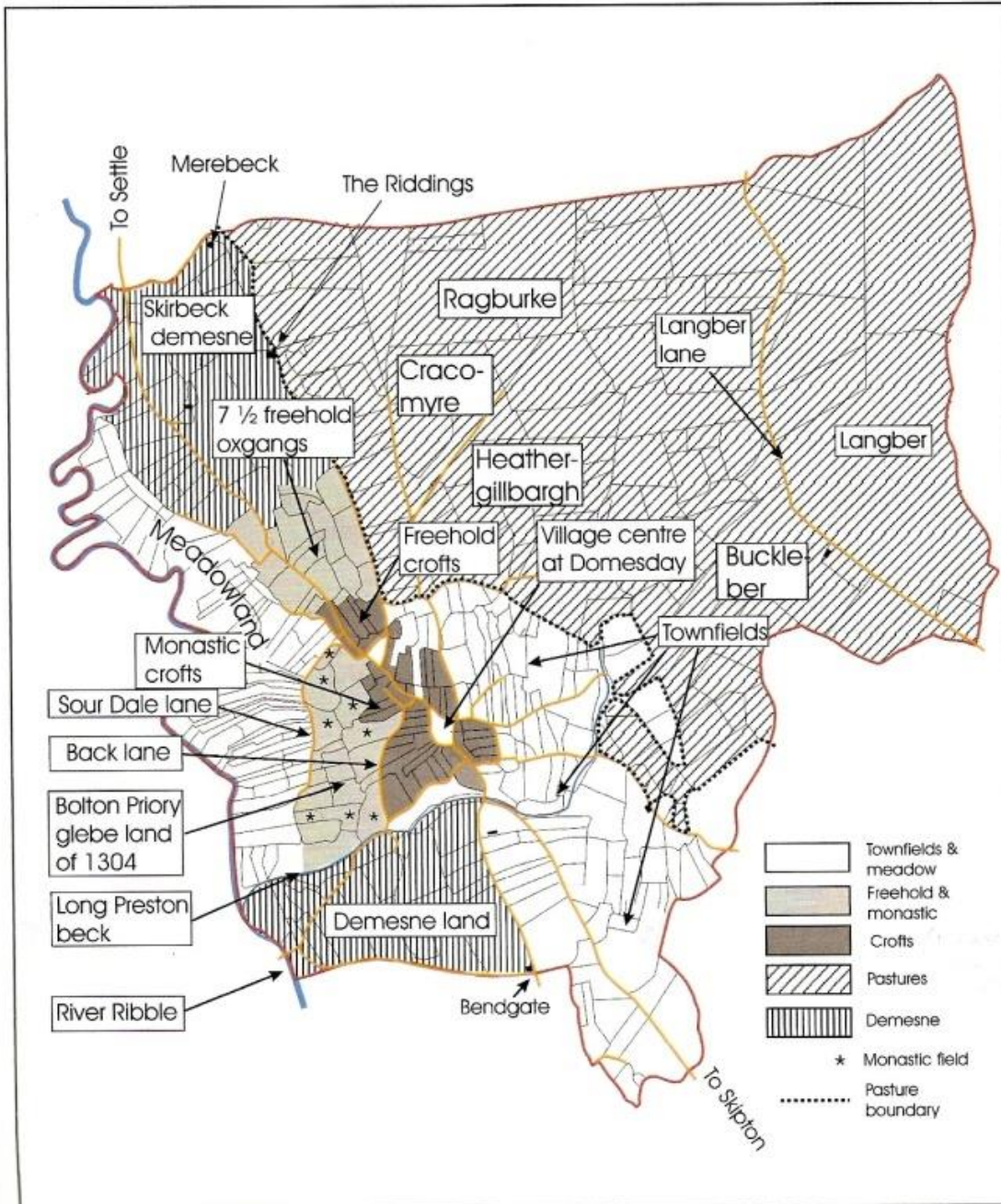
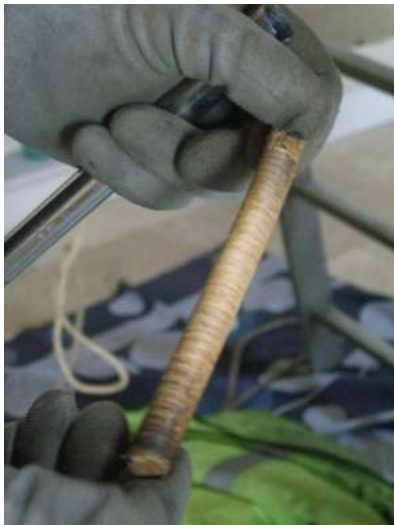


Figure 3.1 The Long Preston crofts and field systems



Field barns





Renard Close
(16thC Raynard family)

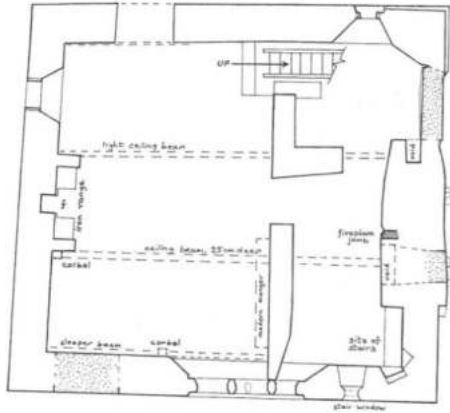




SPITTLE CROFT LITTON

GROUND PLAN

(BUCKED SPACES STIPPLED)

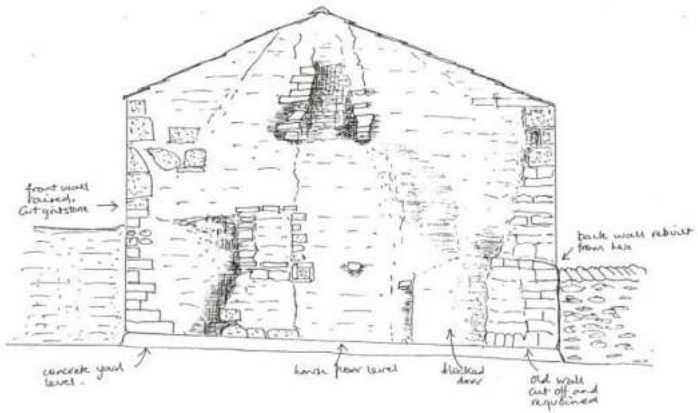


SPITTLE CROFT, LITTON

Detail of east gable

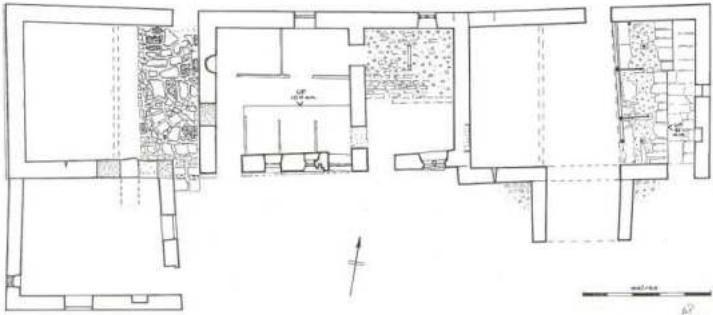


AC9 200/03

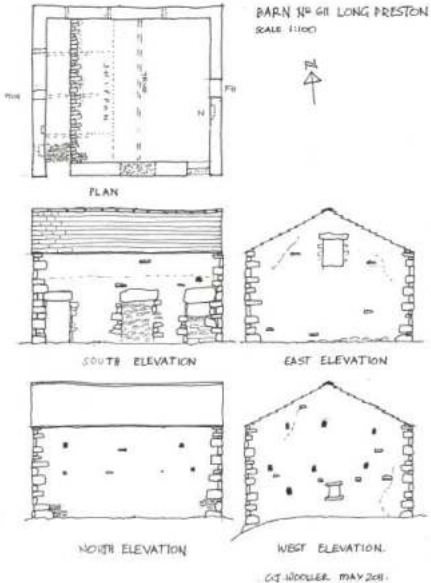


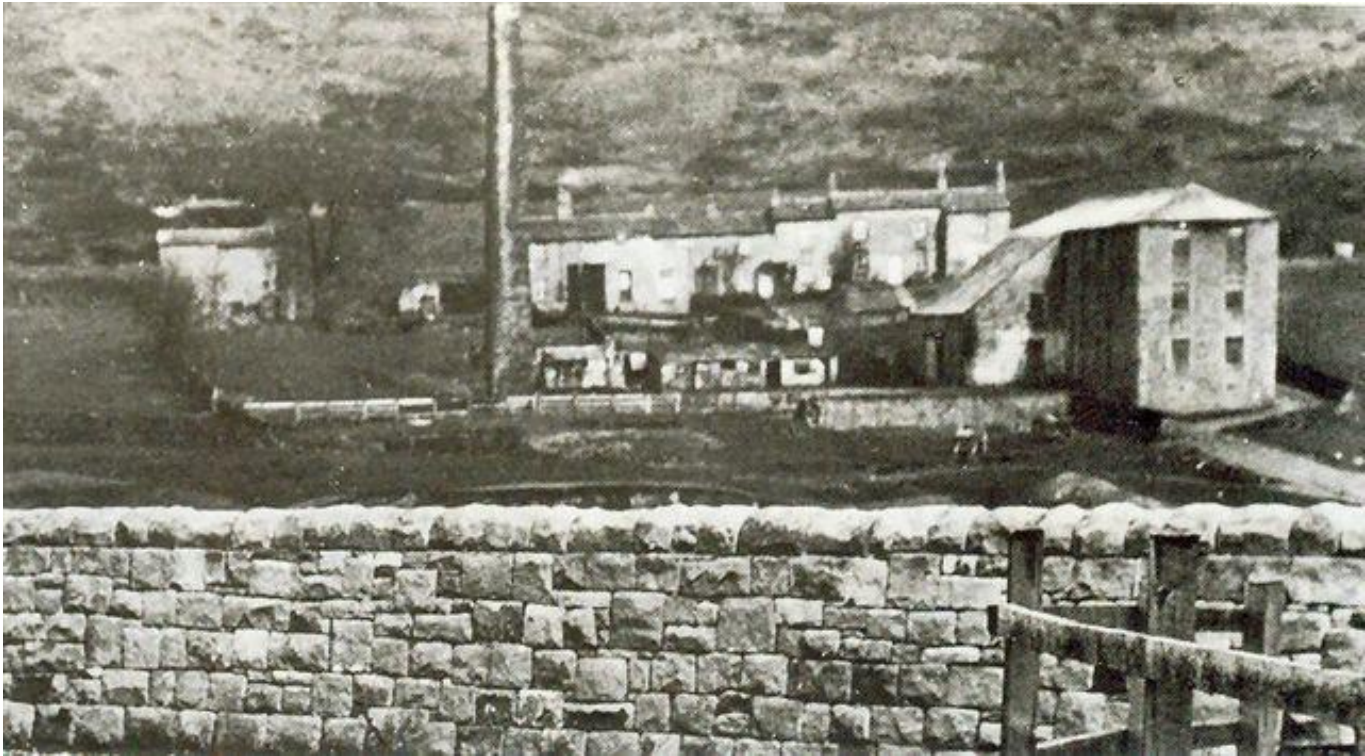


Low Winskill1679

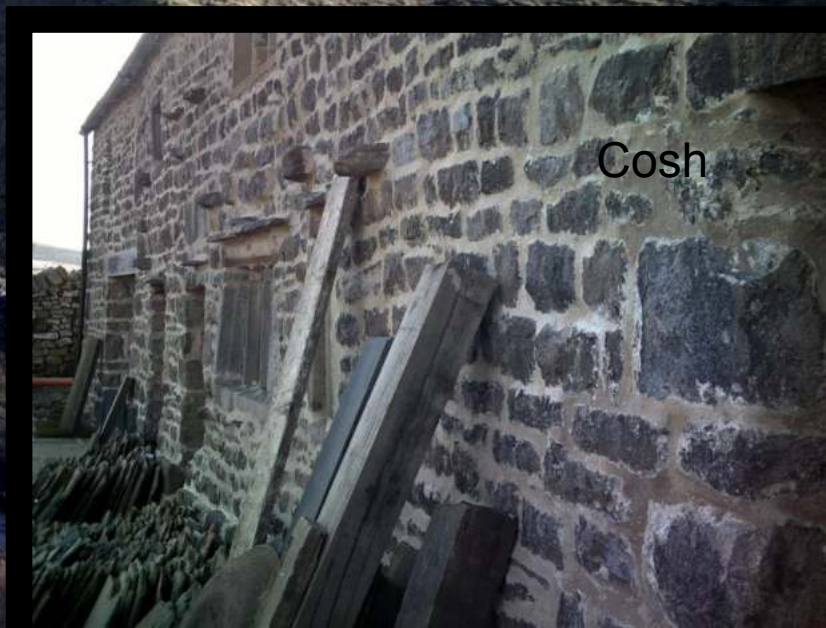


Parliamentary enclosure of commonland





Foxup, Littlehdale



Cosh

Photographic acknowledgements :

David Johnson
Jane Lunnon
Arnold Pacey
John Sellers
Tony Stephens
Louise Vardy
Sonia Wilkinson

Google

