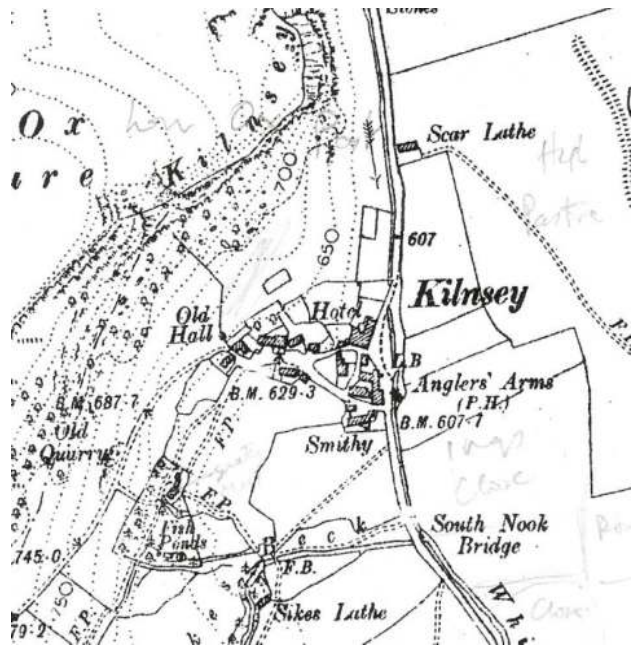




Beyond the Building:
Sites and Settings in Craven





Hatching denotes the earliest part of the building

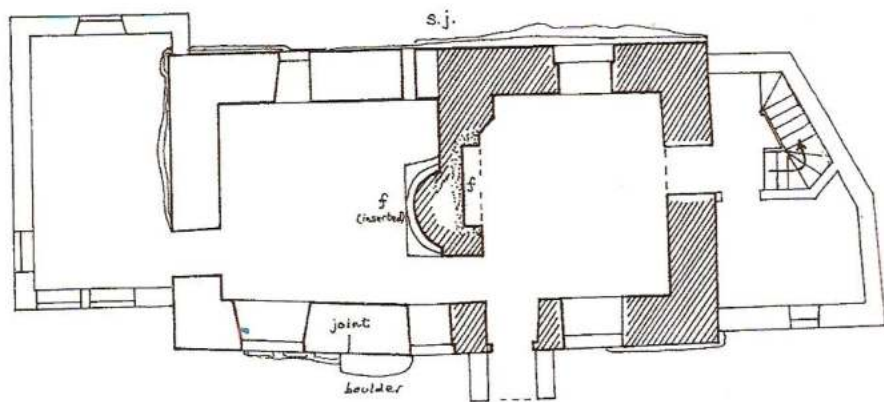
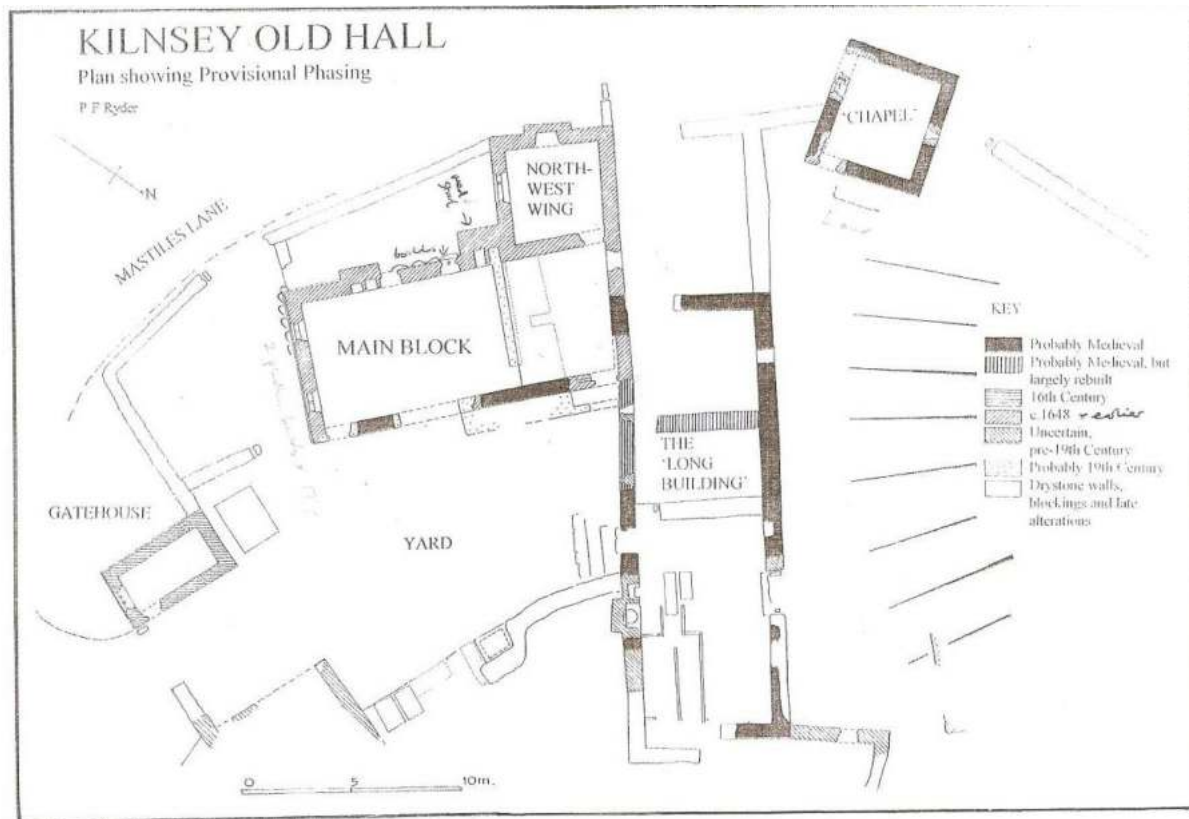


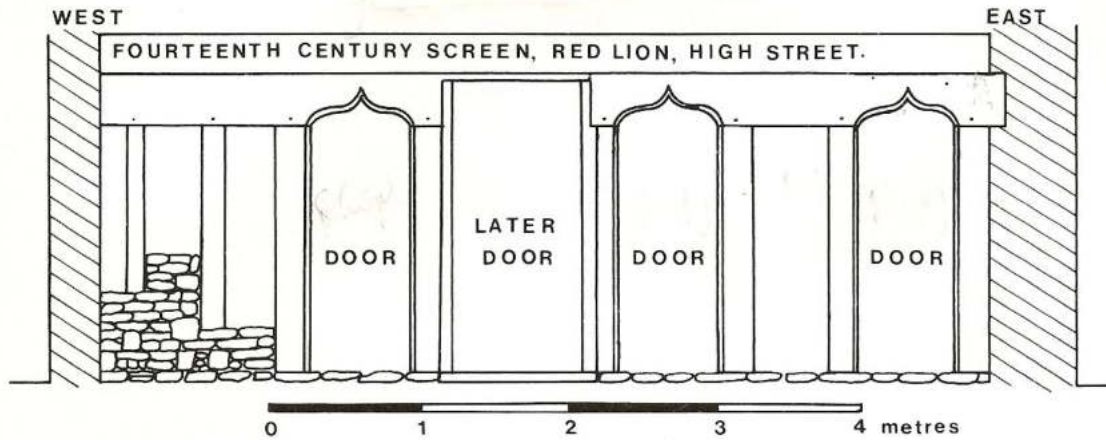
Figure 23. Ground plan of Monks Cottage, Kilnsey.

(Arnold Pacey)



Towns; Skipton





Timber screen to service end



Gabled range c 1600 added to west side of medieval hall and timbered frontage

Towns; Settle



Settle

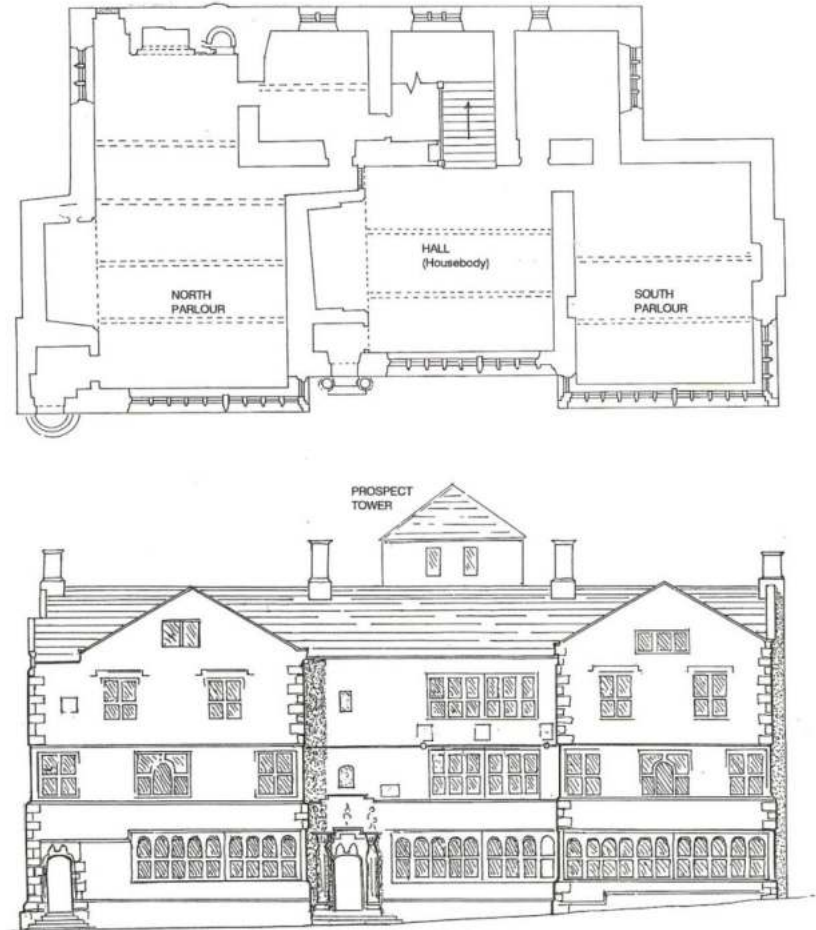
The Folly 1679



12

Figure 1

THE FOLLY
Principal (west) elevation and ground plan.
(not to scale)



Origins of isolated farms;
Addingham Moorside





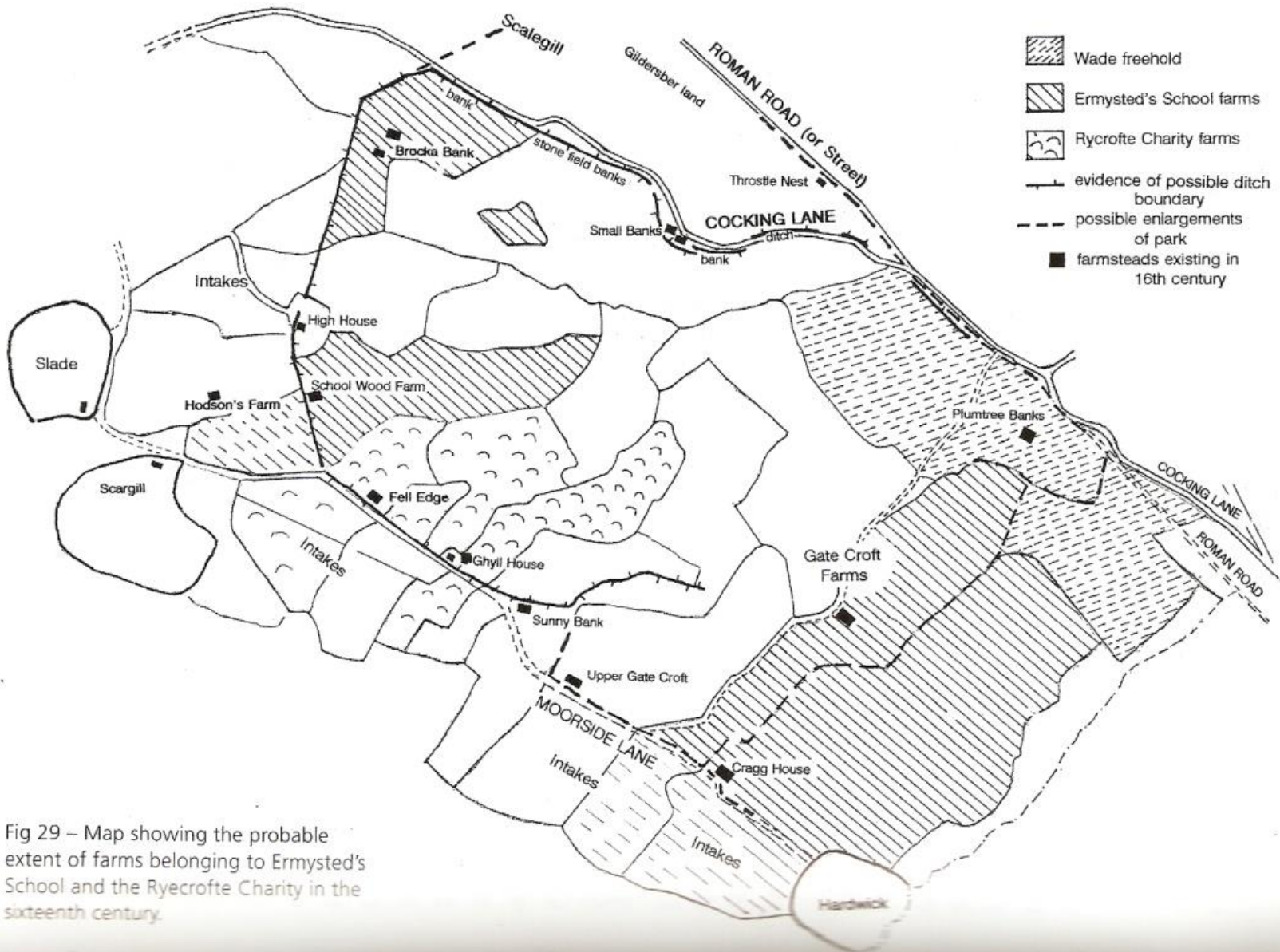


Fig 29 – Map showing the probable extent of farms belonging to Ermysted's School and the Rycrofte Charity in the sixteenth century.



Fell Edge and Lumb Beck 1670



Scale park (1410) – East Scales farm



Forest of Langstrothdale

Divided into 8 lodges by1314



Yockenthwaite



Beckermonds





Forest of Barden

13 lodges by 1314





BOMBHEY BARN
DREBLEY

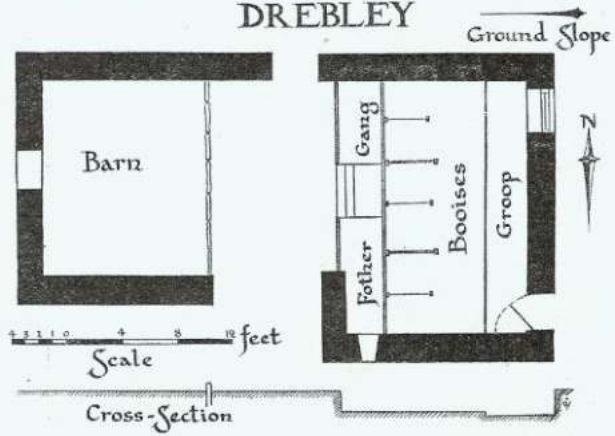
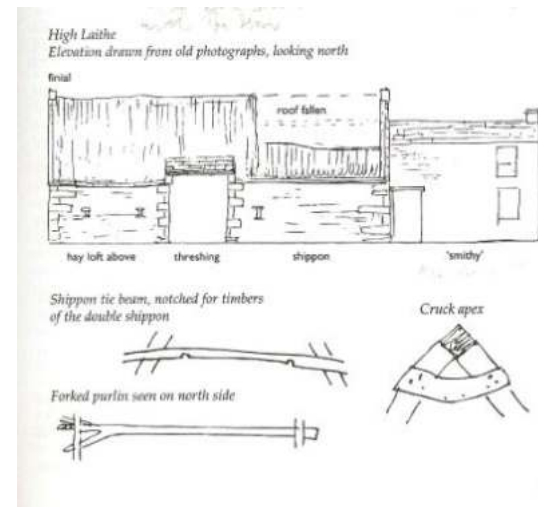
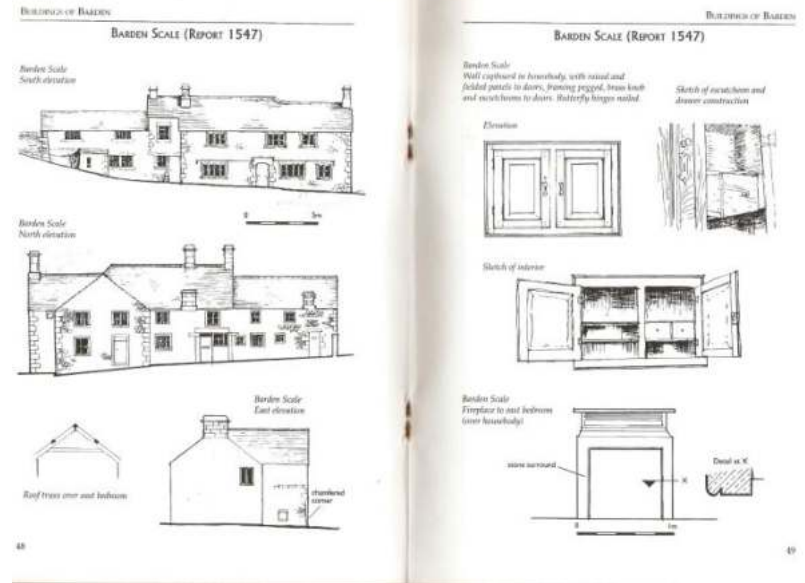


Fig. 8. *Bombey Barn, Drebley, Wharfedale.*

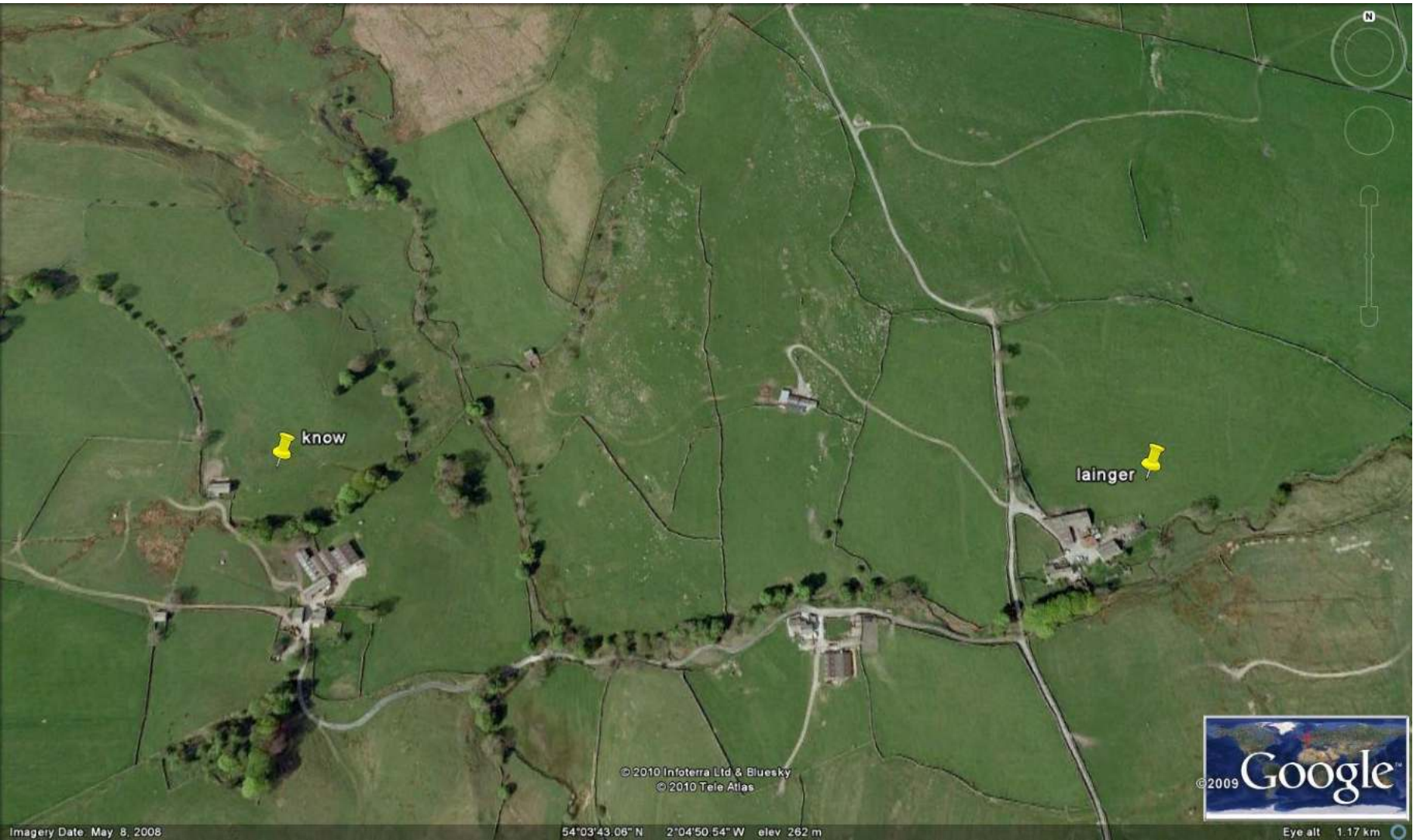


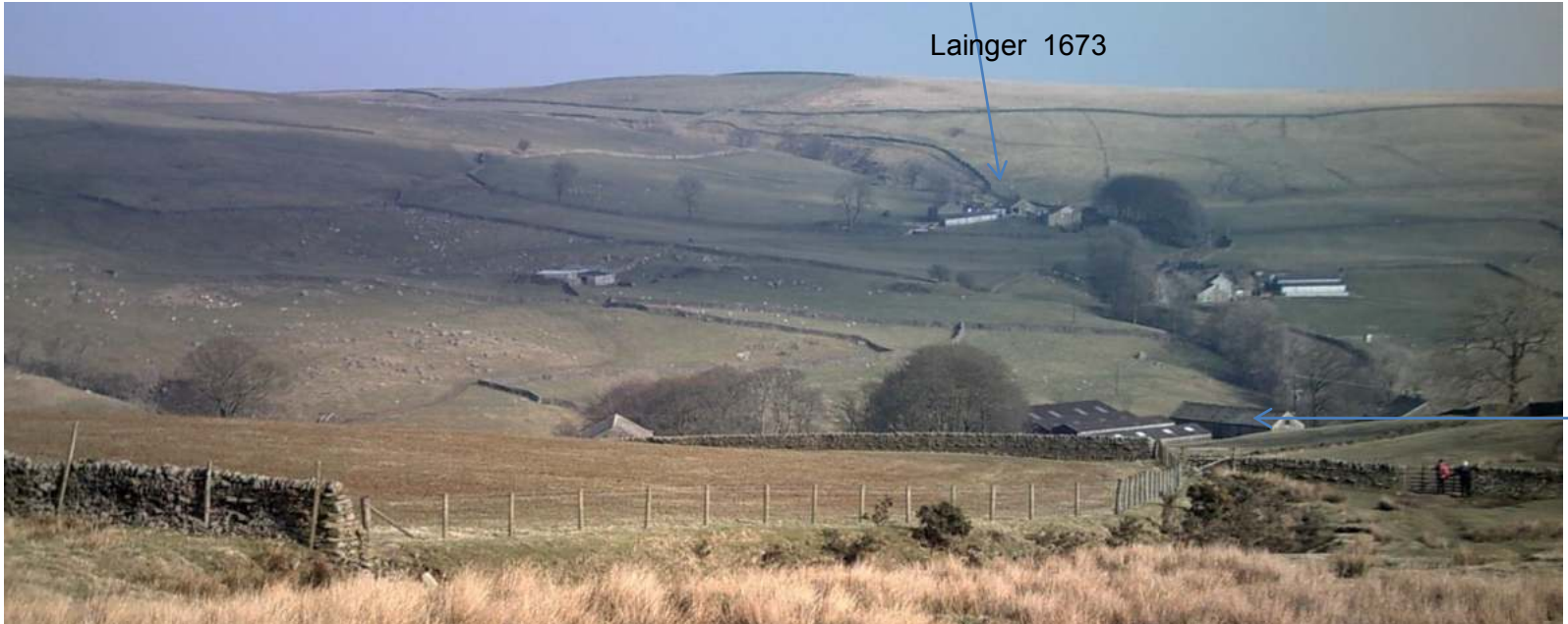
James Walton's drawing

Forest of Barden; Barden Tower (1485) and Scale farm (c1600)



Monastic farm sites





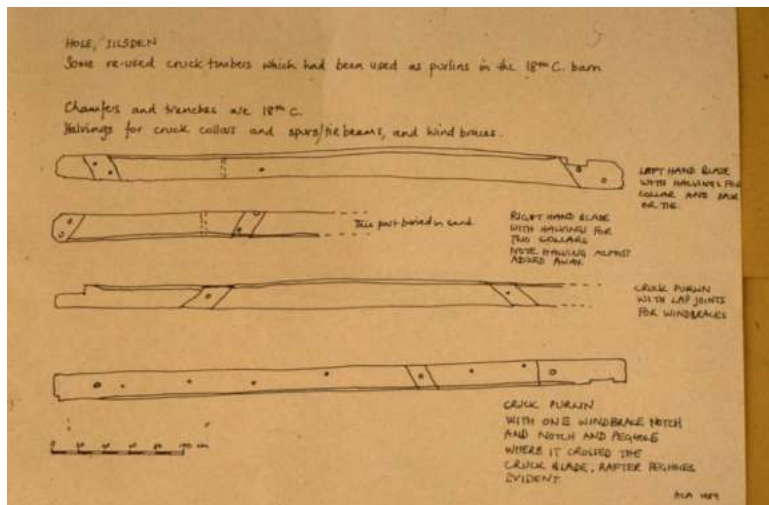
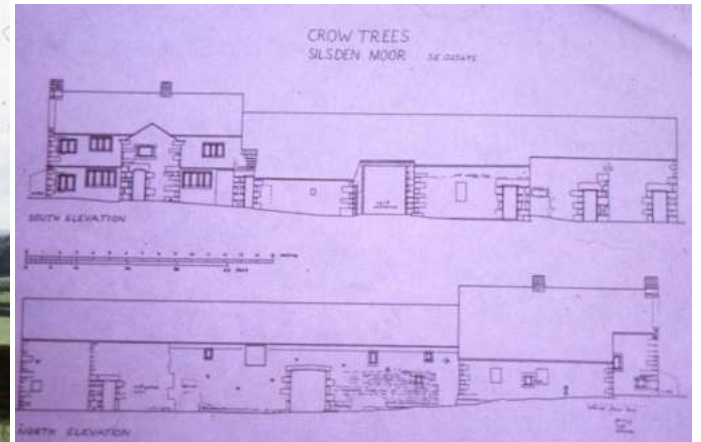
Linger 1673

Know



16thC new farms ; Silsden Moor





High Bradley Moor – New House with 7 closes (16thC and c1660)





Shrunken settlements

