

# Recent work on vernacular buildings

## Timber structures in Craven



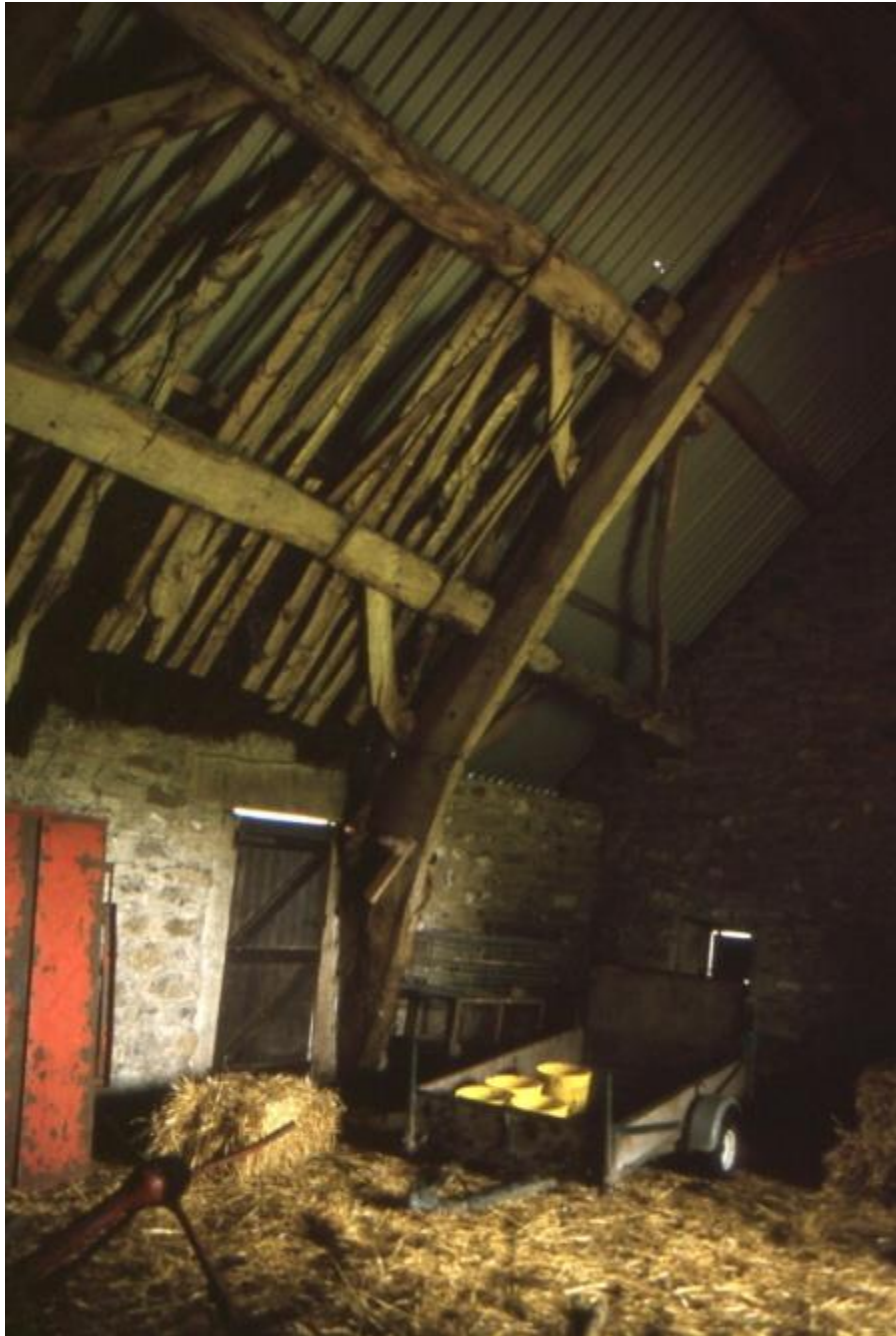


17thC stone houses of "the great rebuilding"  
1679;1673;1687;1680;1697

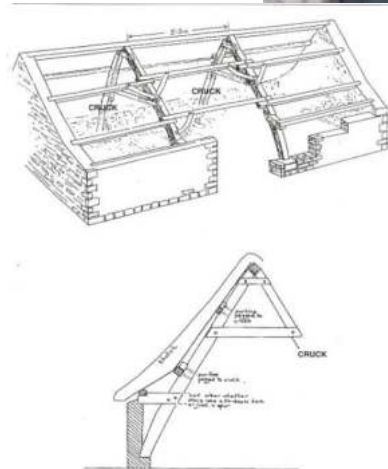








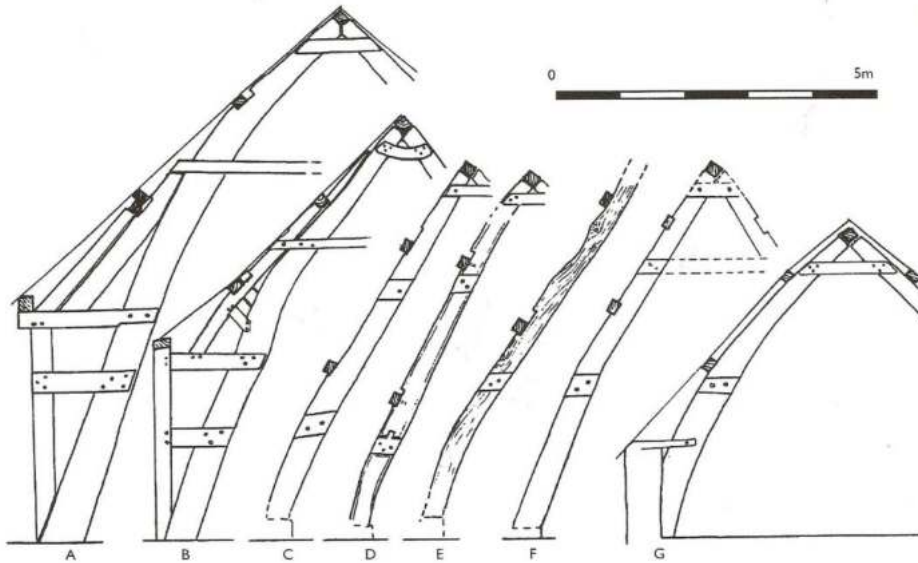
# Re-used timber in Craven of unknown date



# Reconstructing cruck timber

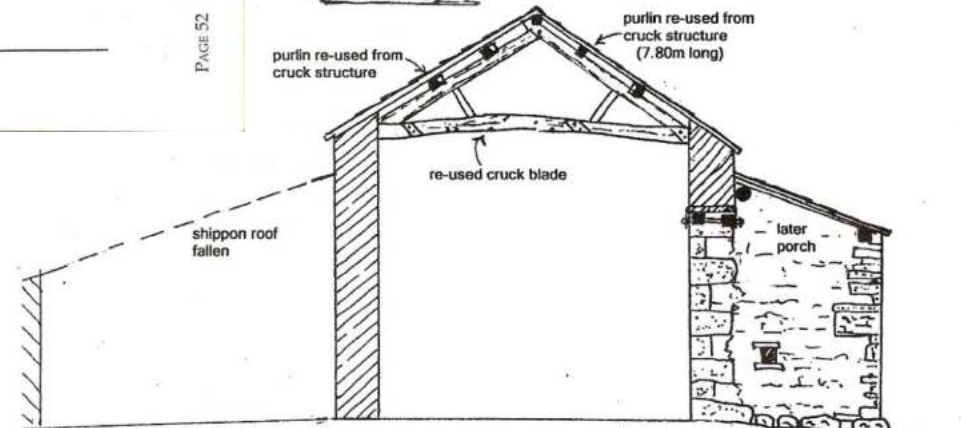
Figure 1: Crucks in Craven (and its Lancashire margin)

A comparison of crucks from standing buildings (A, B and G) with some reconstructed examples (C-F). All drawings are to the same approximate scale. Locations are: A, Stonyhurst, Lancs.; B, Hacking Hall, Lancs.; C, Small Banks, Addingham; D, Park House, Eastby; E, Cross Green, Lothersdale; F, Tithe Barn, Lothersdale; G, Drebley, Barden. (Drawings by Arnold Pacey)



CRUCK BUILDINGS IN THE CENTRAL PENNINES

PAGE 52



# Dating old oak timber by dendrochronology

YVBSG now has a dendrochronology sub-committee



Annual rings

Sap wood and bark



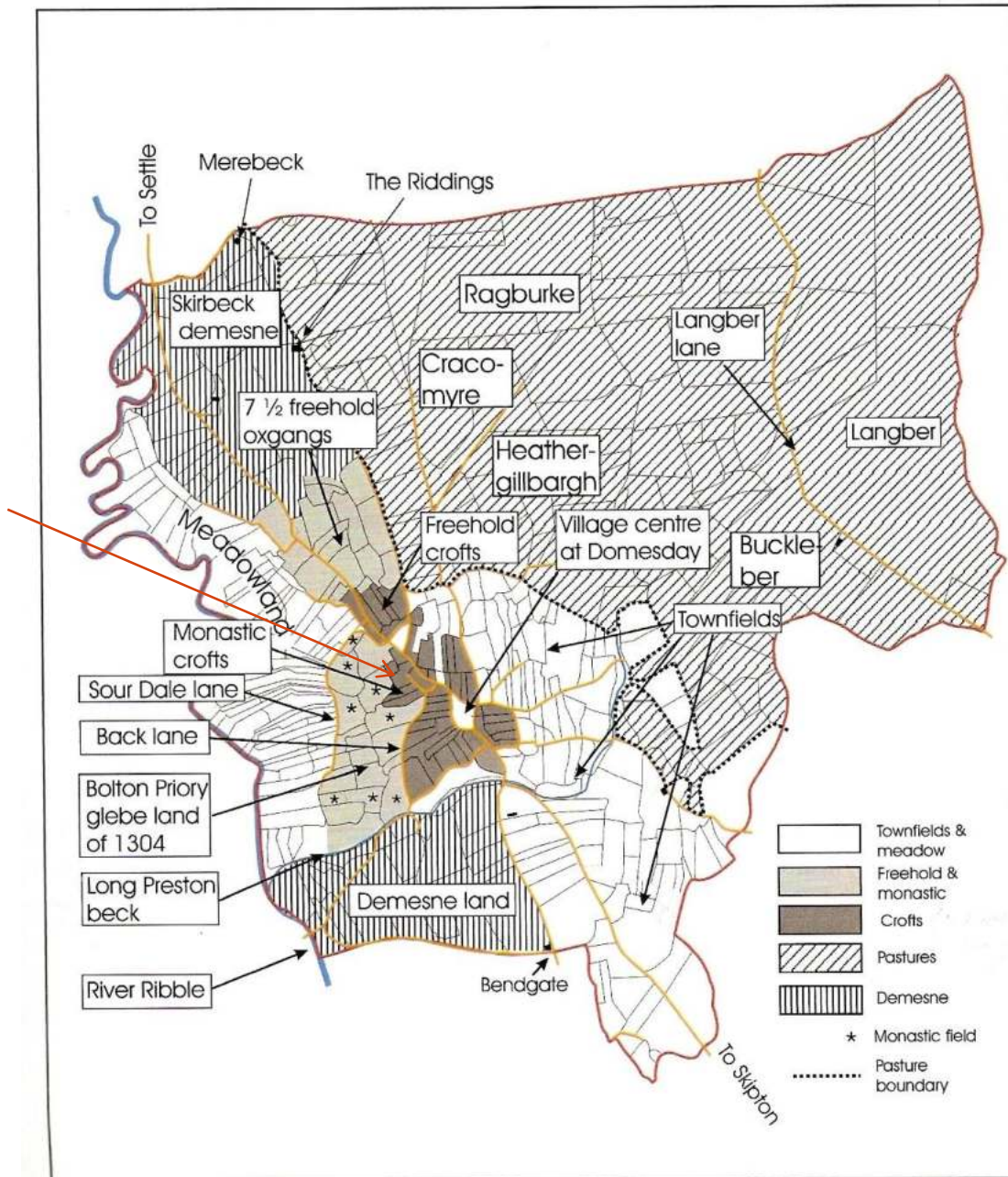


Figure 3.1 The Long Preston crofts and field systems

In 1304 Bolton Priory purchased 8 oxgangs for use as glebe land.

Glebe land gave the vicar of Long Preston church some land and income. By 1473 three crofts with barns and tenements of the monastic tenants were probably present by the roadside.

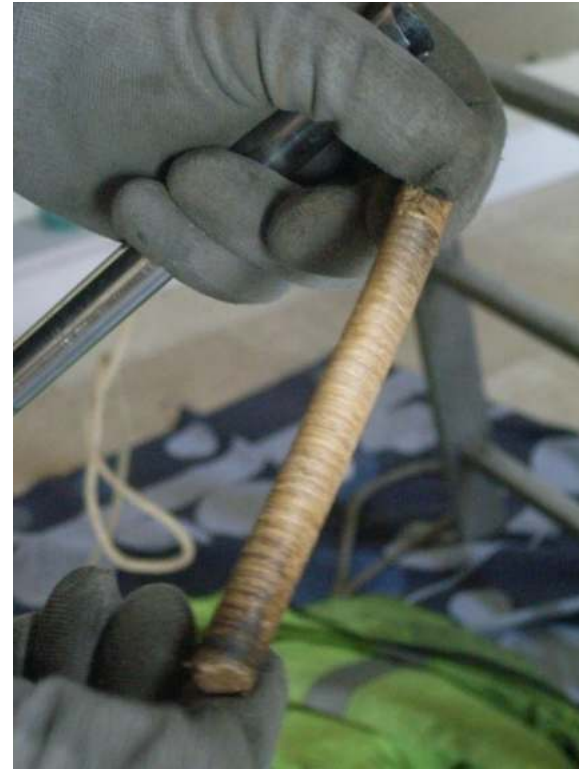
Map; Tony Stephens  
Long Preston Heritage Group





Guys Villa barn interior





## Timber cores or samples 2013

Five of ten dated, with rings  
cross-matching  
from 1391-1527AD.

Funded by HLF



## Lower Winskill Farm (Sawley Abbey) “NB 1675” house datestone



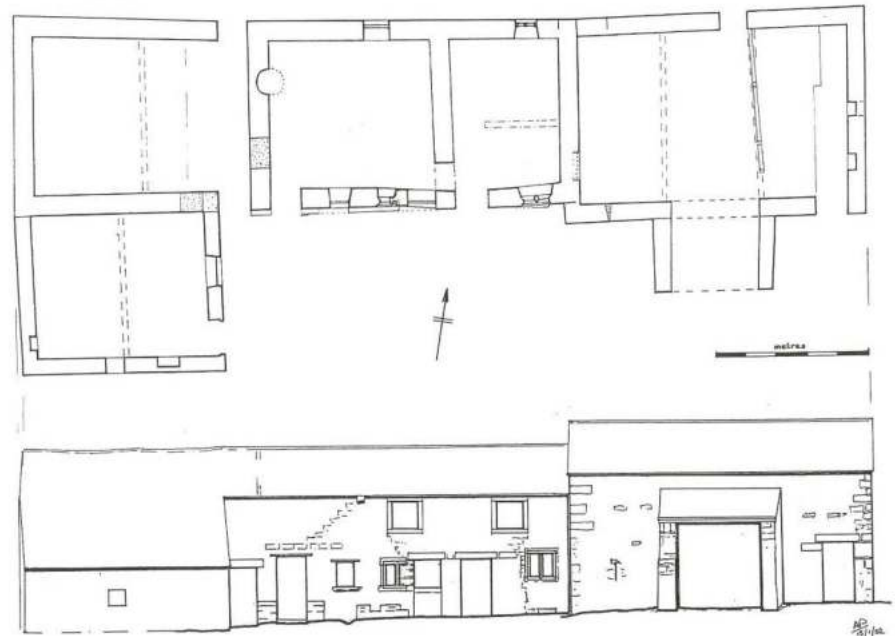
# The barn range at Lower Winskill

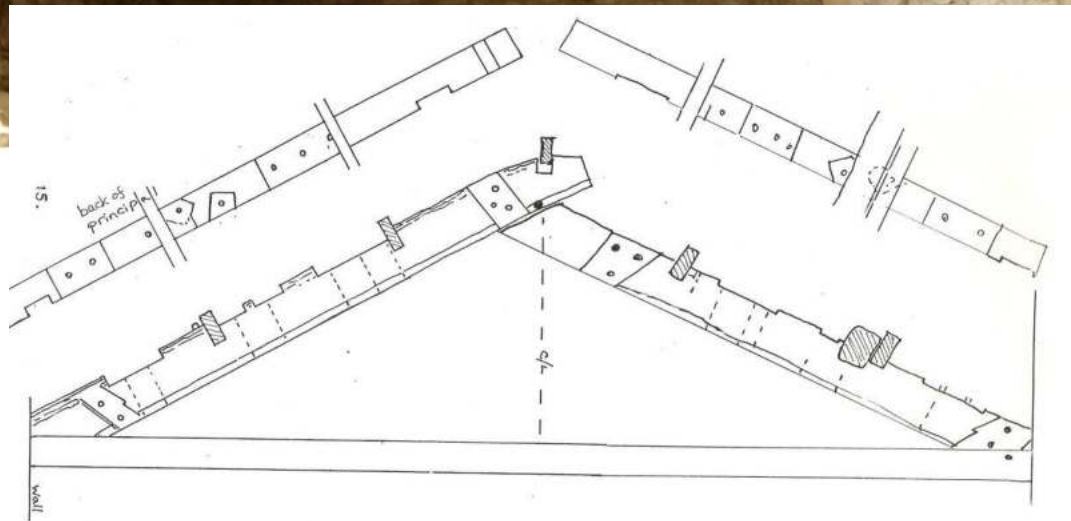
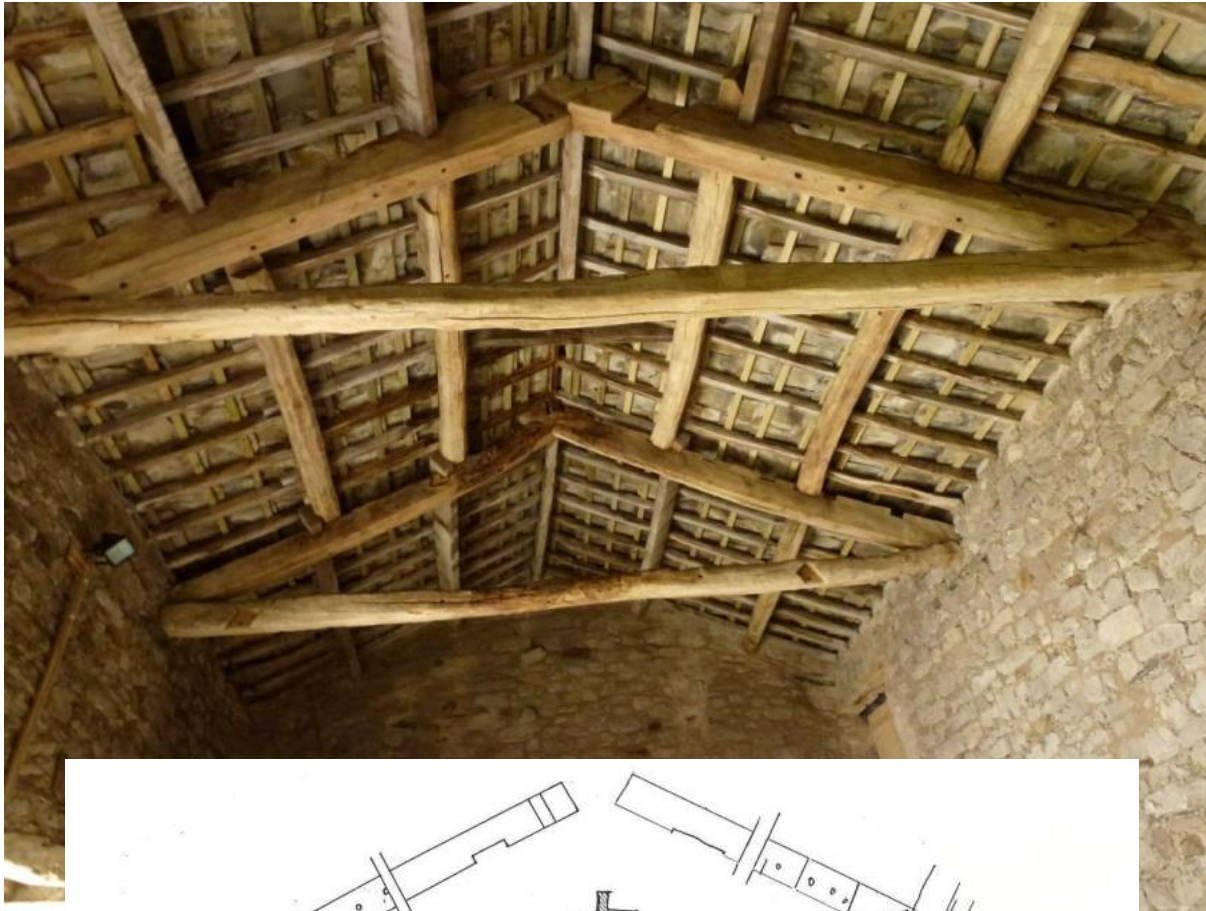


YVBSG report no 1625,  
Surveyed 2000

*LOWER WINSKILL FARM*

*Relationship of GROUND PLAN and SOUTH ELEVATION, to reduced scale.*





Re-used cruck blades and purlins

Other re-used timbers in Craven:  
paired rafters and posts.

