



“Life and Tradition in the Yorkshire Dales”

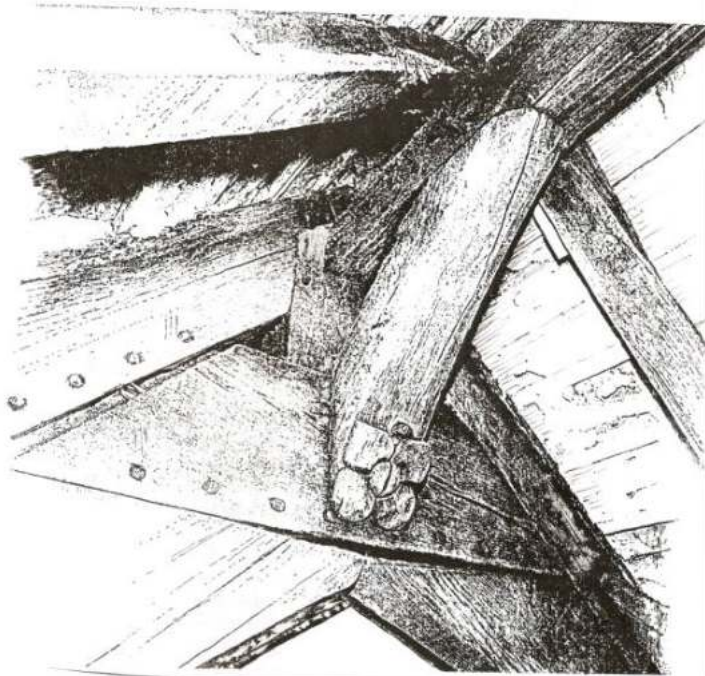


Vernacular buildings
in Craven.



Style origins of vernacular buildings; standing buildings from earlier times and stone houses of the gentry and nobility





MEDIEVAL ROOF TRUSS
TOLD FARM
© A. Pacey

Roof carpentry c.1460





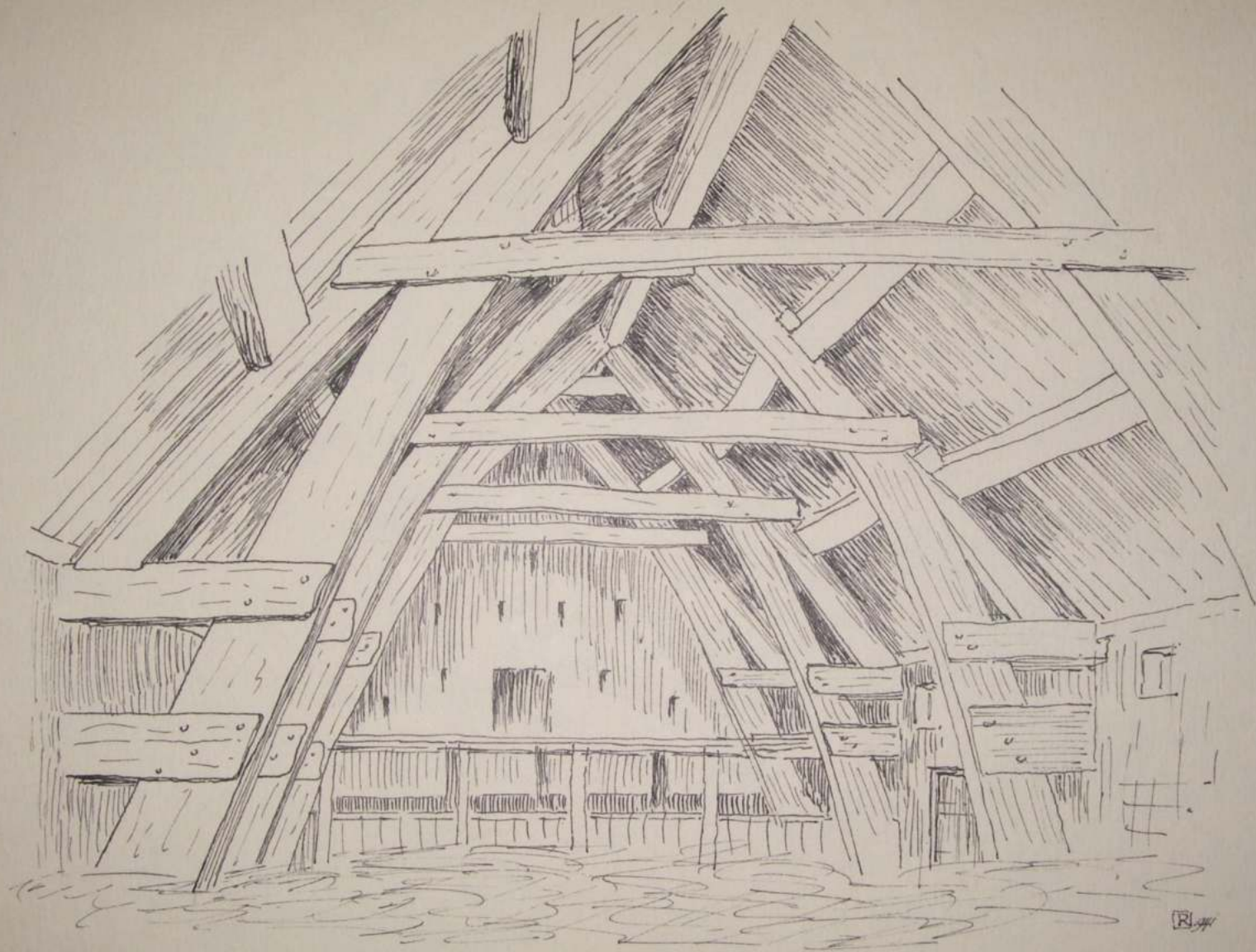
Roof carpentry c.1460



Cruck construction




RS 700.2.14



Shireburn barn - Stonyhurst.







Documentary sources; The Hearth Tax
1672/3

Clapham township:

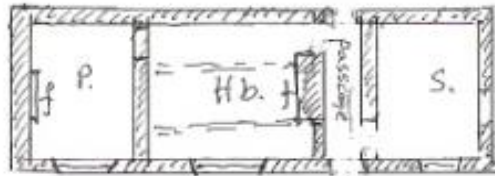
67 households taxed .
Another 8 were exempt on grounds of
poverty
=75 dwellings

107 hearths in 67 houses to be taxed:
41 houses had one hearth
17 houses had 2 hearths
5 houses had 3 hearths
3 houses had 4 hearths
("Esq", "Mr," "Gent")
1 house had 6 hearths (Mr T Watson)

B. POST MEDIEVAL PLANS

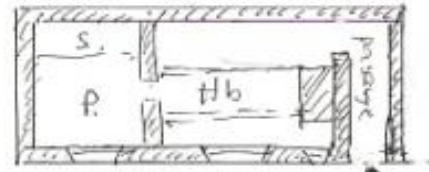
1. HEARTH PASSAGE PLAN

Passage plans are derived from longhouse plans or screens passage of the hall house.



eg. Coxon's farm, Cause

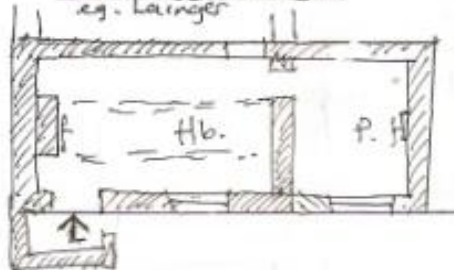
1. END PASSAGE PLAN



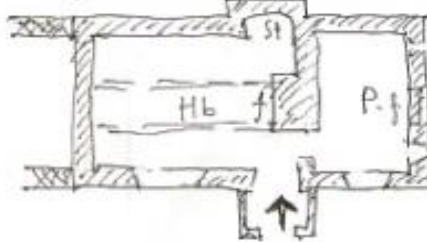
eg. Fell View, Helton

2. LOBBY ENTRY PLANS. (ie alongside the chimney stack)

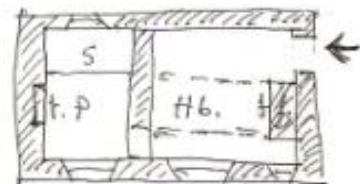
END LOBBY ENTRY eg. Langer



CENTRAL LOBBY ENTRY eg. Hut Top Farm, Malham

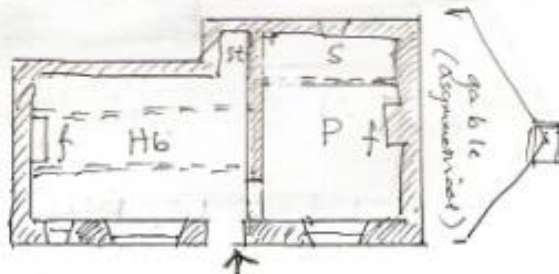


GABLE LOBBY ENTRY

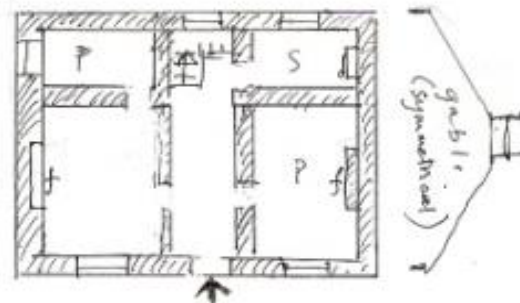


Derived from longhouse?
Common mid-Avalde.

3. ENDSTACK and DIRECT ENTRY eg. Know Bank



4. DOUBLE-PILE PLAN. ie. Georgian symmetry





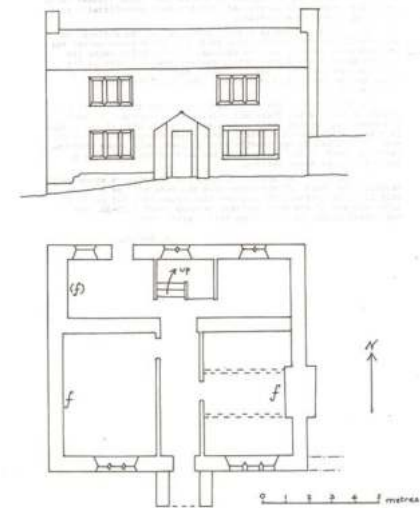
HOUSE PLAN TYPES & ROOM NAMES



hearth passage plan



Georgian double pile plan



the lobby entry plan;



Documentary sources;
Inventories and room names .

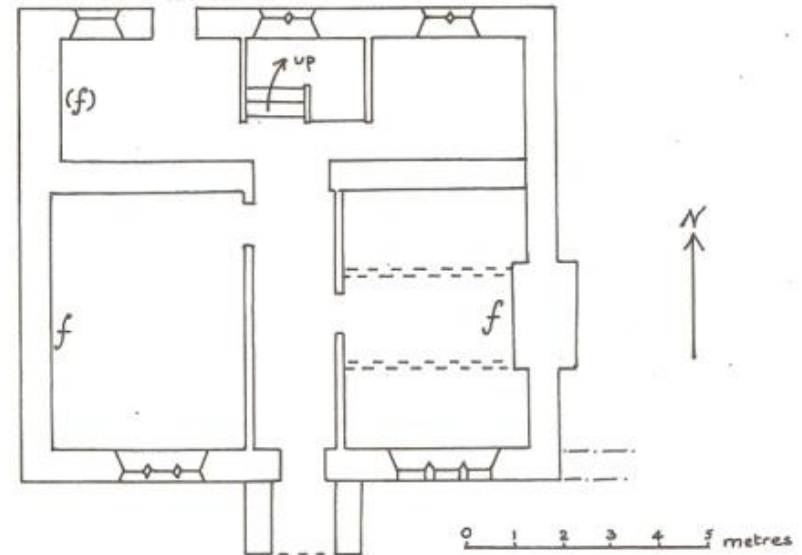
...bodystead and parlour,
buttery and kitchen, chambers above

....20 cattle, 96 sheep, peat fuel..

Inventory;
Henry Wilkinson Dec.1746



House built c1720





DATES: 17th century doorways 1635-1697





Figure 7.10 Langcliffe Manor, 1678 [678]. Three-cell stone house in Craven with direct-entry panes. Handsome detailing includes symmetrical windows, carved lintel (see Figure 8.35), moulded fireplace arch and painted beams (9.6); door (9.14).



Exteriors; window styles, door styles, mouldings



18thC doorways,
Tooling on
broached ashlar
and boaster tooling



1703



1778



Field barns

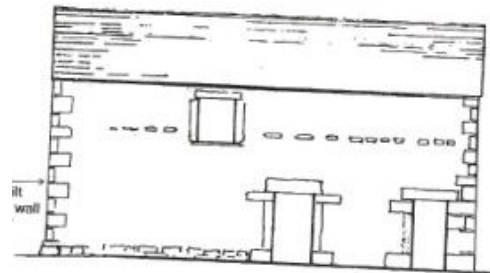
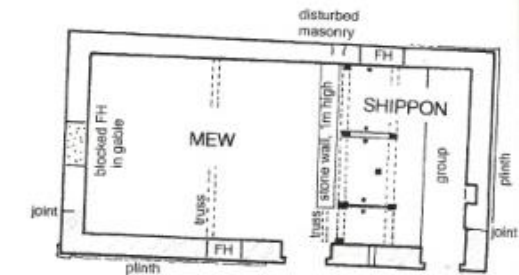




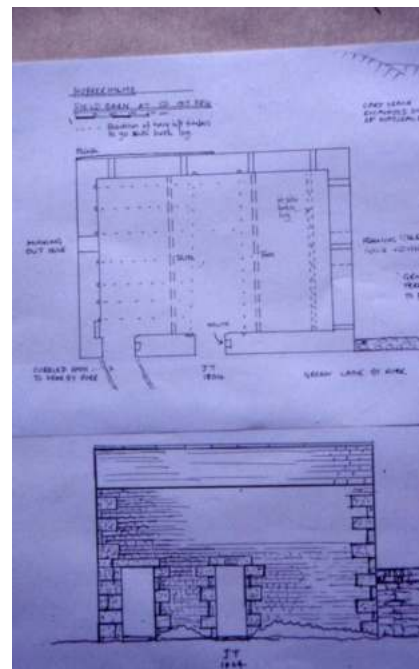




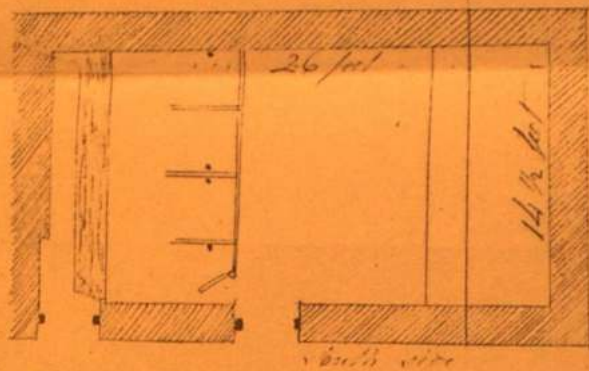
Two door fieldbarn,
Kettlewell



Two door fieldbarn,
Stainforth



1 Plan for a Cowhouse proposed to be built
on the Lands in Whitaside belonging to Mucker
School 1822



Will hold abt
158 3/4 of hay

The Trustees of Mucker School proposes to let the
building of a Cowhouse or Laith on the Lands
belonging the School situate in Whitaside on
the above demarcations viz the length Inside 26 ft
by 14 1/2 height 15 feet from the floor to the beams
and the foundations not less than 1 foot below the
floor upon the following conditions

Let 1st Mason Work



Steep thatched roofs rebuilt:
Kettlewell, Newby, Stainforth



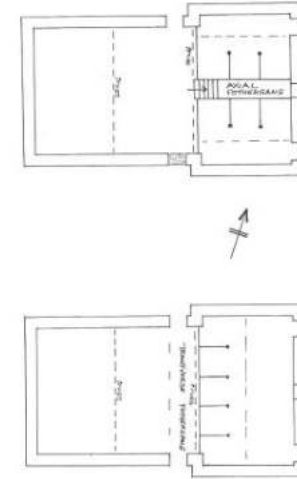


Figure 2
REWARD CLOSE LATHE
 Schematic plans (not to scale)
 TOP: existing layout with aisle for foraging and south doorway blocked
 BELOW: hypothetical layout, possibly of the late 18th or early 19th century, with
 intensive foraging and south doorway open.

Barns and farm buildings













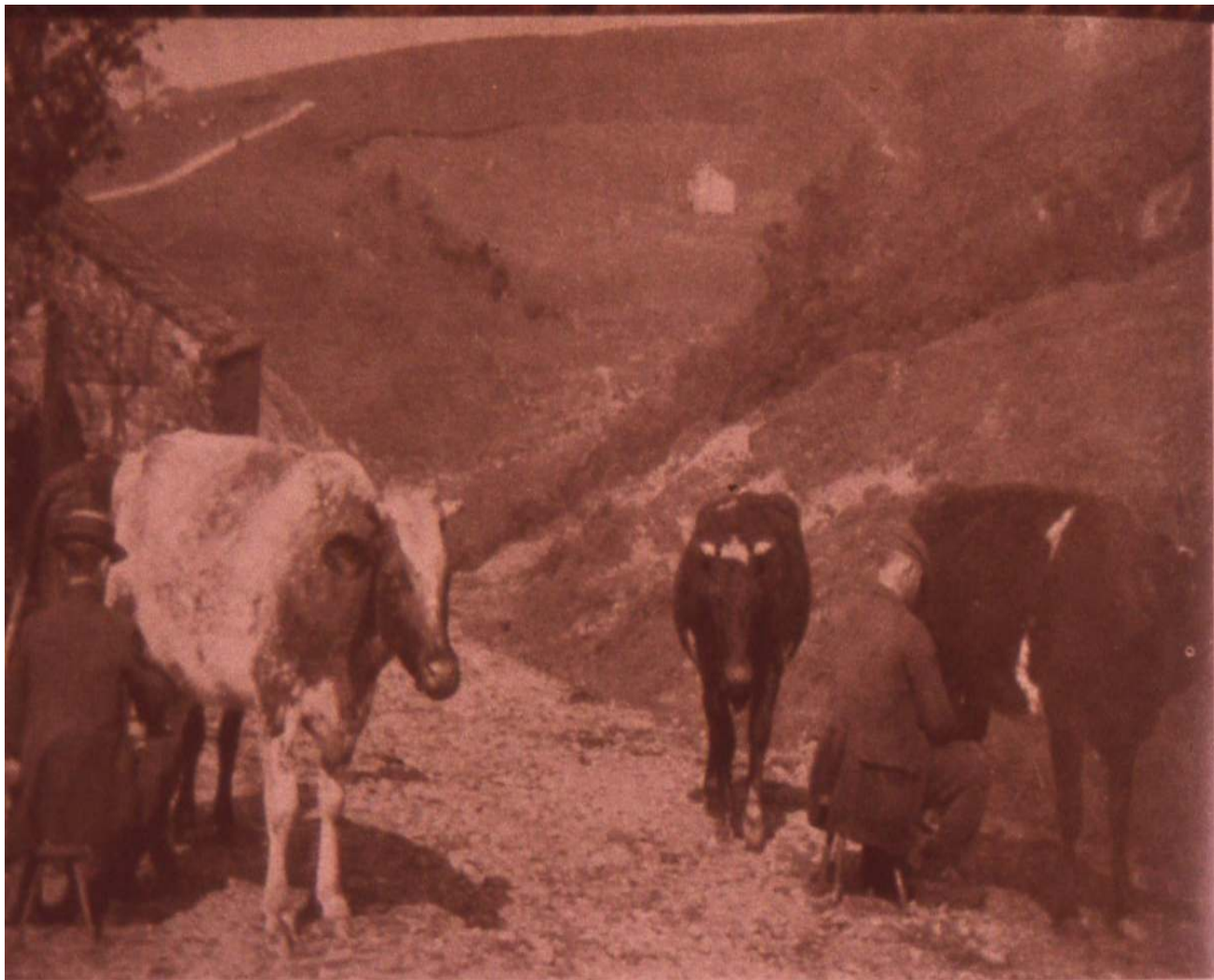












96. Mr Robert and Mr Thomas Rutter, Shoregill, Swaledale, milking on Gomerside Pasture
(c. 1910)

MILKING OUT OF DOORS







