

A wide landscape view of a valley. In the foreground, there's a grassy hillside with a dark stone wall. The middle ground shows a valley with green fields, a small village with several buildings, and a stone wall. The background features rolling hills and a large, prominent rock formation or cliff face under a blue sky with some clouds.

KILNSEY

Recording the vernacular buildings
UWHG project 2014

Kilnsey;
What are vernacular buildings?





Not vernacular
buildings?





What do vernacular buildings tell us?
The “great rebuilding” in Craven...



Timber roof trusses in local vernacular buildings



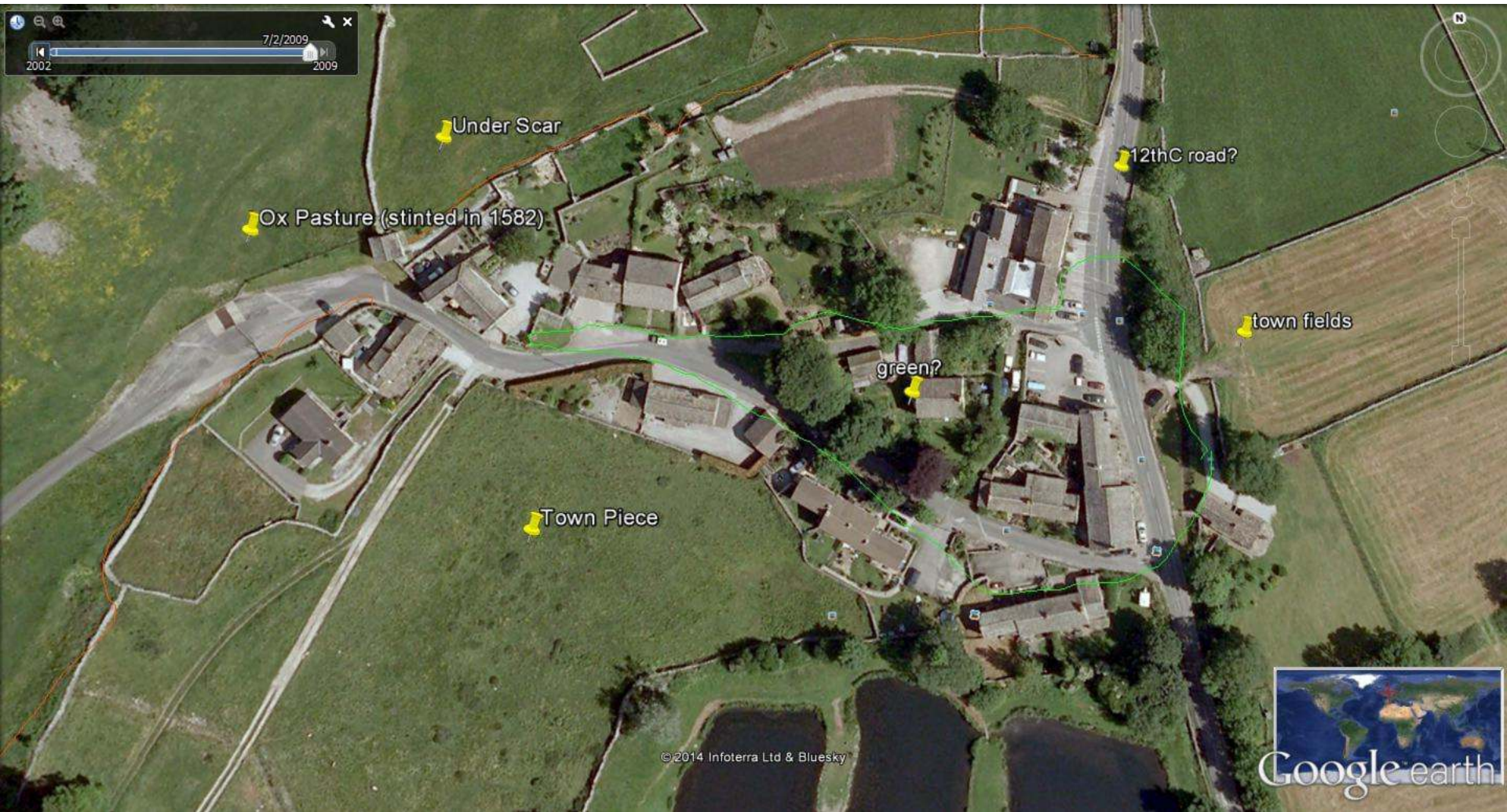
The Kilnsey VB Project

1. What evidence is there of the “great rebuilding” in Kilnsey?



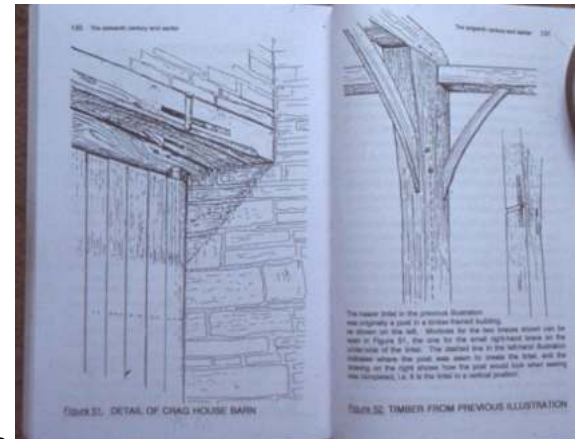
Datestones 1635..1667..1697.....

Buildings



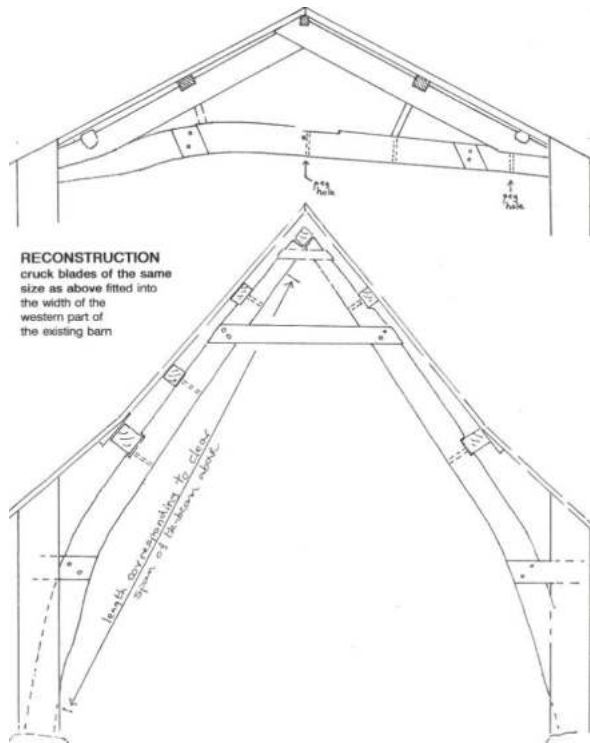
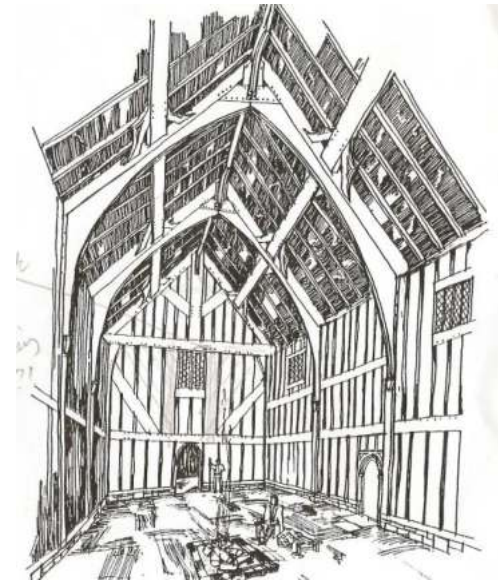
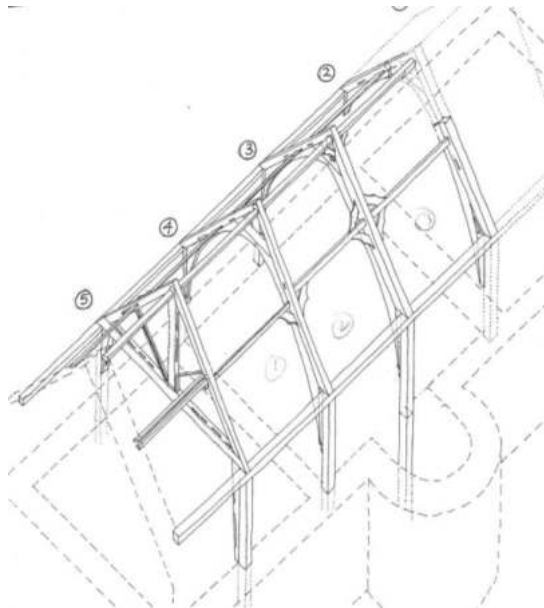
The Kilnsey VB Project.

2. What evidence is there for the buildings before the 17th century rebuilding?



Look for building alterations, re-used timber, artefacts

Timber-framed buildings pre 1600?



Survey methods

Extensive surveys e.g. photographic records, village profiles etc .
 Intensive surveys e.g. measured drawings, elevations and plans.

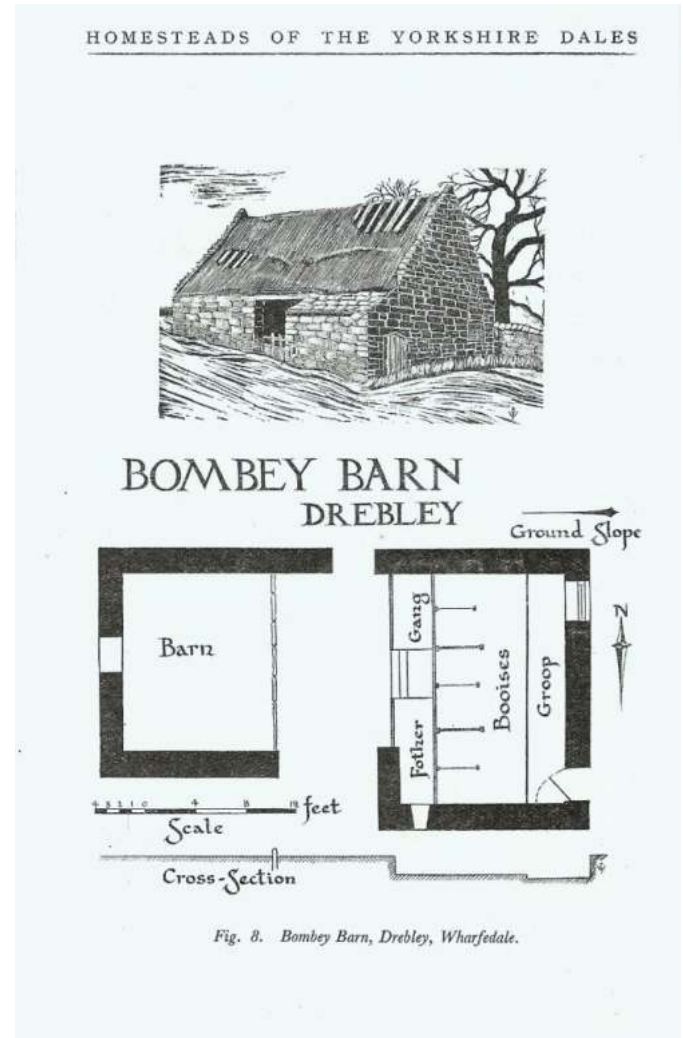
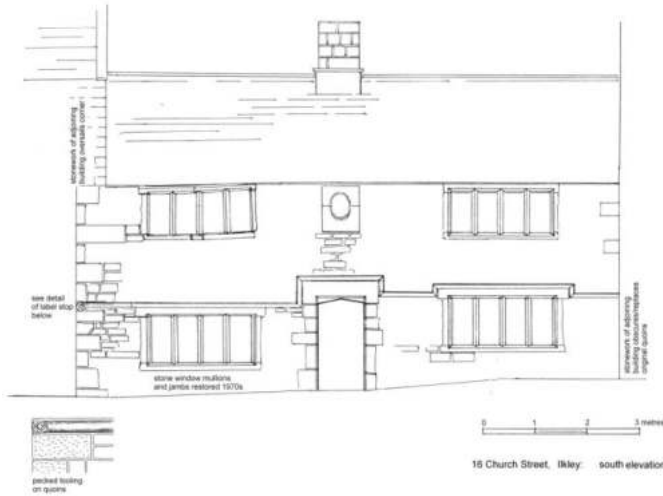
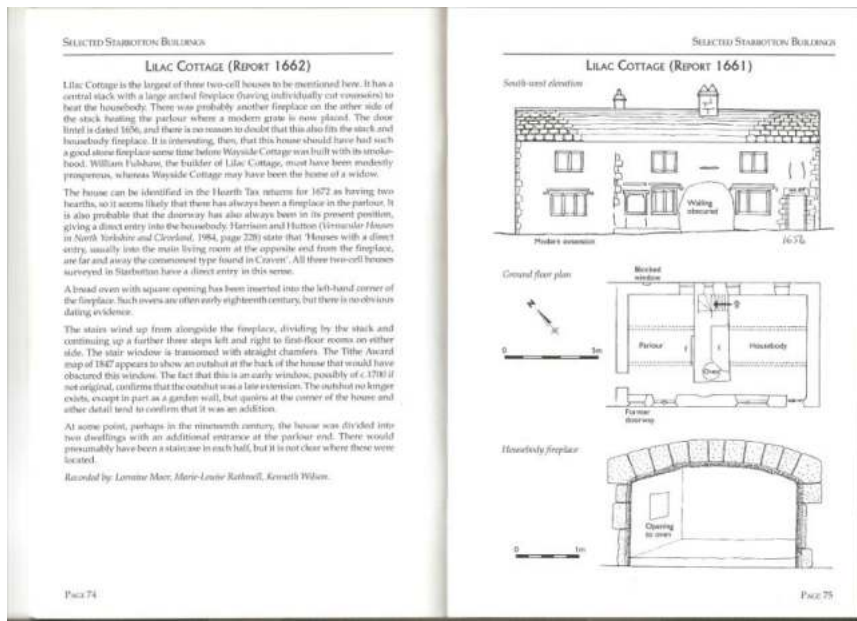


Fig. 8. Bombey Barn, Drebley, Wharfedale.









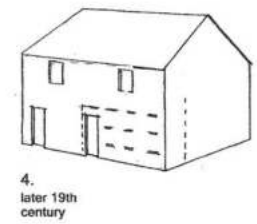
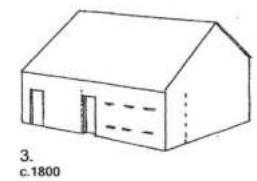
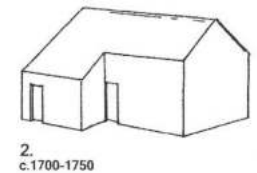
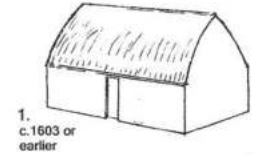
What recording can reveal

122
Grassington D

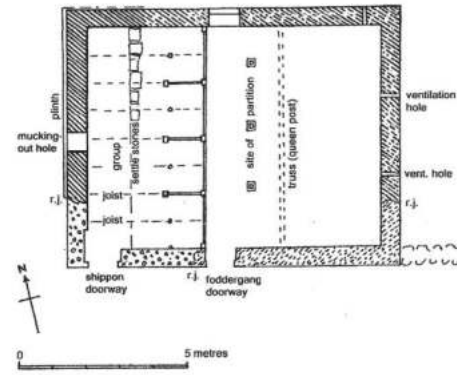
Barn in Cove Closes probably included in a survey of c.1603 (see Moorhouse, *Yorkshire Buildings*, 35, 2007, p.59).

- KEY:
-  plinth, etc., c.1603 or earlier (see phase 1 in 'sequence').
 -  uncertain date, but walls may contain fabric of c.1603.
 -  old photos show masonry of c.1700-50; recently rebuilt re-using gate-post as lintel.
 -  late 18th-century walling and doorway.
- r.j. ragged joint in wall.

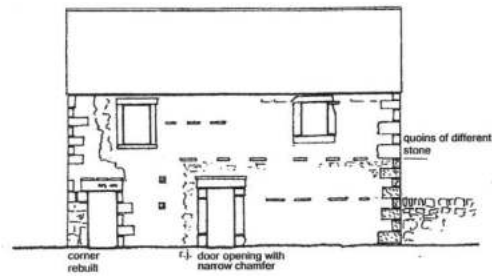
SEQUENCE
Hypothetical sequence of development



PLAN



SOUTH ELEVATION



Dateable features and their names; windows, doorways, kneelers...



Look for differences and changes











H E
1768

ANGLERS
COTTAGE



H E
1768

ANGLERS
COTTAGE





TENNANT
ARMS
BAR & RESTAURANT

CAR PARK
AT REAR

Post Office

Local notices and information board



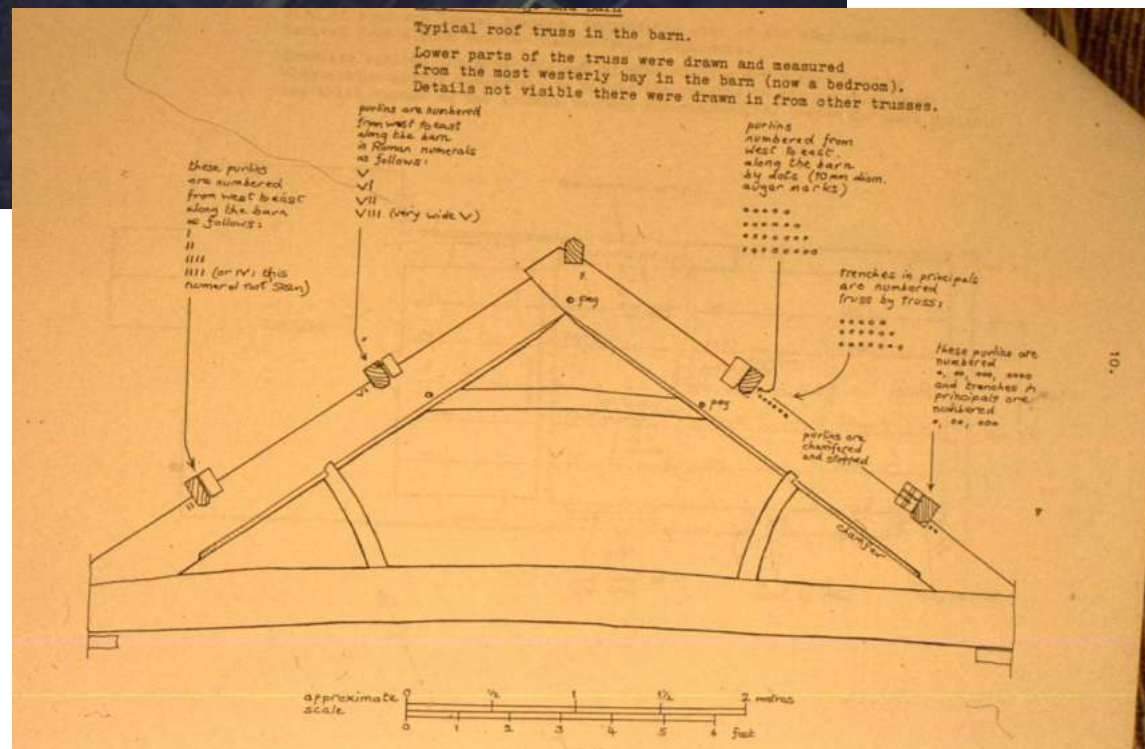




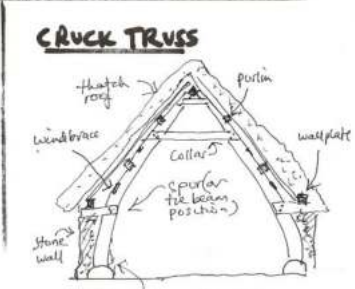
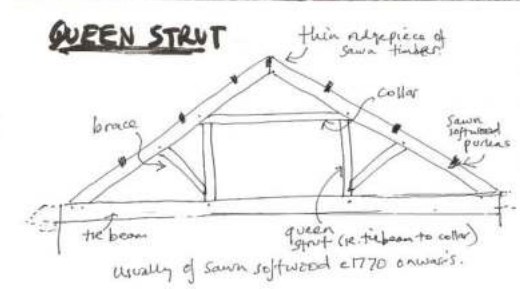
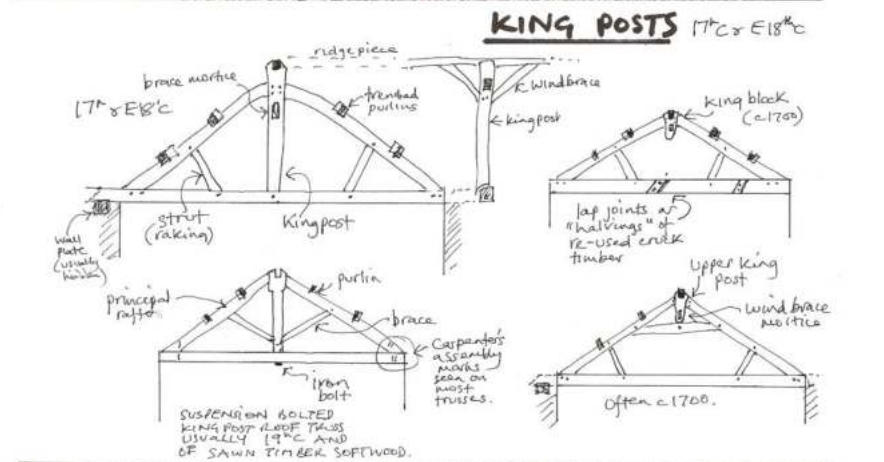
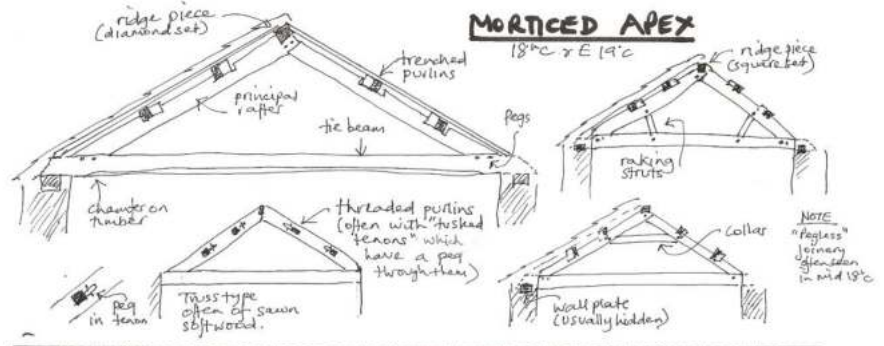


Interiors. Roof trusses.

Tie beam, principal rafters,
Raking struts, collar, common rafters,
ridge piece, purlin. Peg holes.
Carpenters' construction marks,
red marking-out lines



ROOF TRUSS TYPES



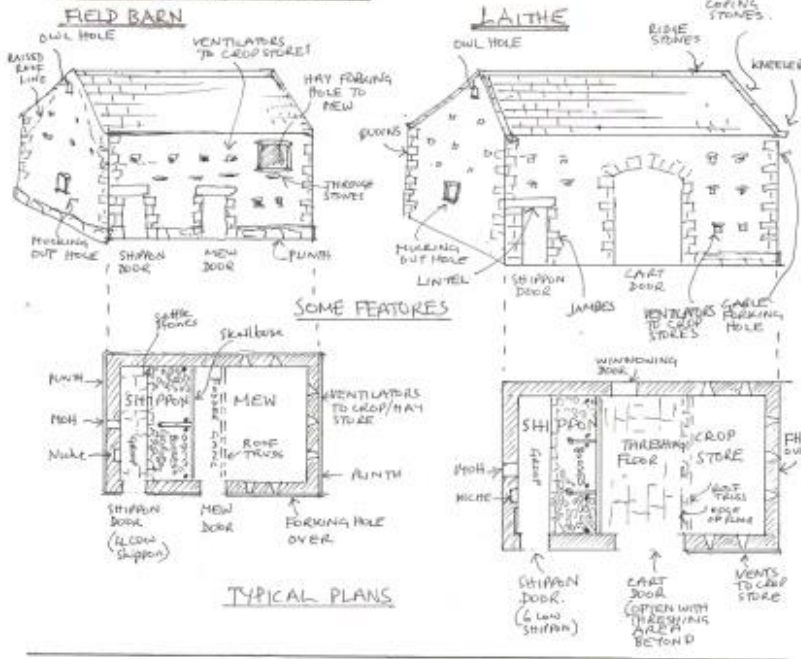
ACA 2011

SOME ROOF TRUSS TYPES IN DALES BARN



Plan types and rooms/spaces

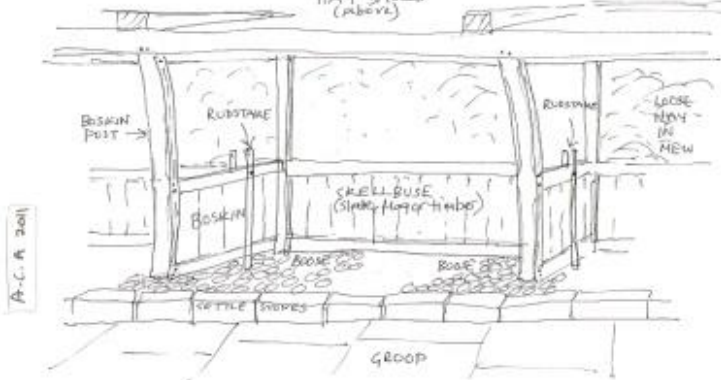
LOOKING AT BARN:



THE SHIPPON (COW) STANDINGS

Cows were over-wintered in the double booses.

HAY BALKS (ABOVE)



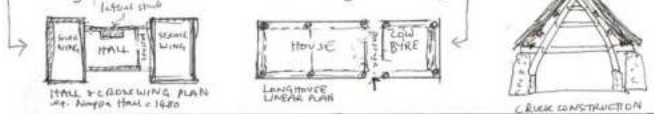
PLANS OF VERNACULAR HOUSES IN CRAVEN

Vernacular buildings are traditionally analysed by their plan type. The main room was the Housebody/Houseplace/Keylestead. There was a parlour, often subdivided to make a service room (usually a dairy). Outshuts often contain dairy too.

A. EARLY STANDING BUILDINGS (few survive intact)

Features include:

- Timber frames (eg Fold Farm Kettlewell c1600) Stone for low halls and cowhouses (eg. Kibbey Old Hall (part))
- Hip roof (eg Great Barn Bolton Abbey)
- Lateral fireplaces (eg Nappa Hall, Wensleydale)
- Hall and crossing plan (eg Nappa Hall, swasthanger houses)
- Open hall (by the 17th C all houses were storied) (Fold Farm had a floor inserted)
- Arched halls (eg. Galesdale and rias at Bolton Abbey)
- Base crick linear halls (single storey dwellings and cottages)
- Longhouse (with horse barn sharing an entry)

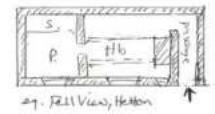
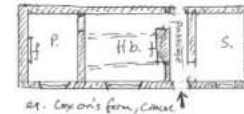


B. POST MEDIEVAL PLANS

1. HEARTH PASSAGE PLAN

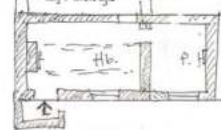
2. END PASSAGE PLAN

Passage plans are derived from longhouse plans or screens passage of the hall house.

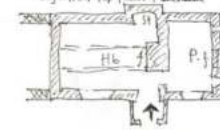


2. LOBBY ENTRY PLANS. (ie alongside the chimney stack)

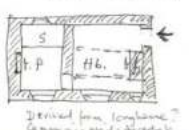
END LOBBY ENTRY



CENTRAL LOBBY ENTRY

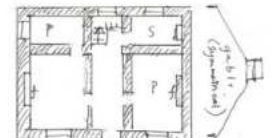
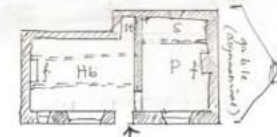


GABLE LOBBY ENTRY



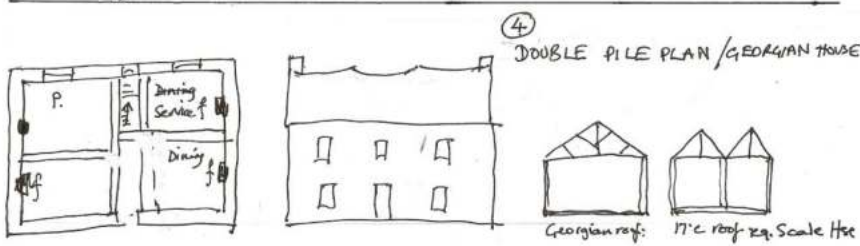
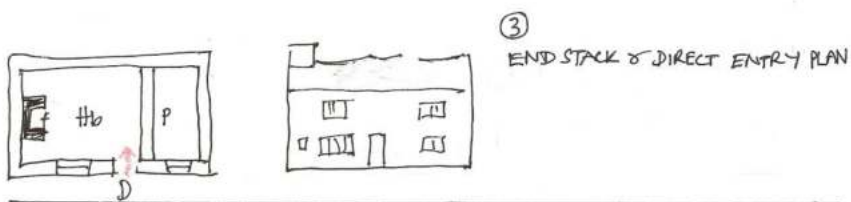
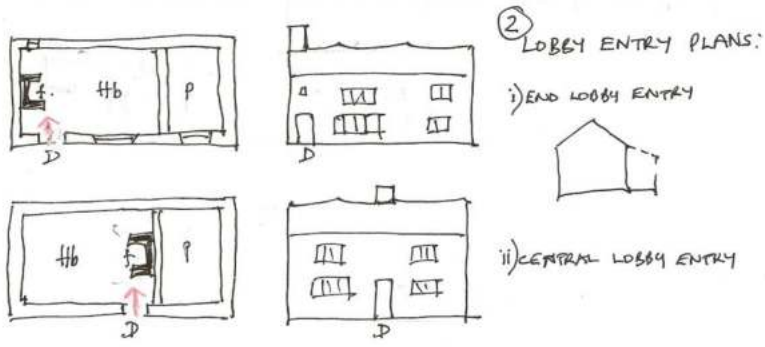
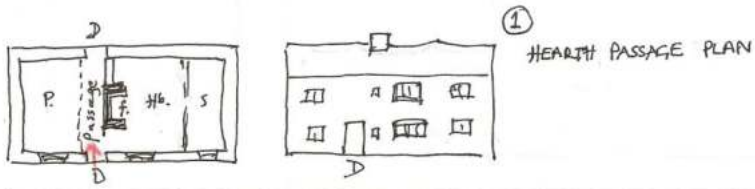
3. ENDSTACK and DIRECT ENTRY

4. DOUBLE-PILE PLAN

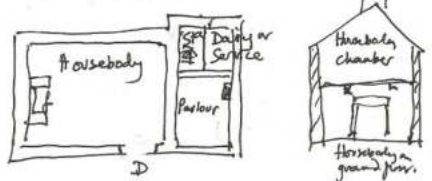


VILLAGE PROFILES - HOUSE PLAN TYPES:

PLAN TYPES



ROOM NAMES:



- Most houses retain:
- Housebody / firehouse / hearth place
 - Parlour (or private room)
 - Rear dining or service room
 - Stair
 - chambers above e.g. parlour chamber, Housebody chamber.

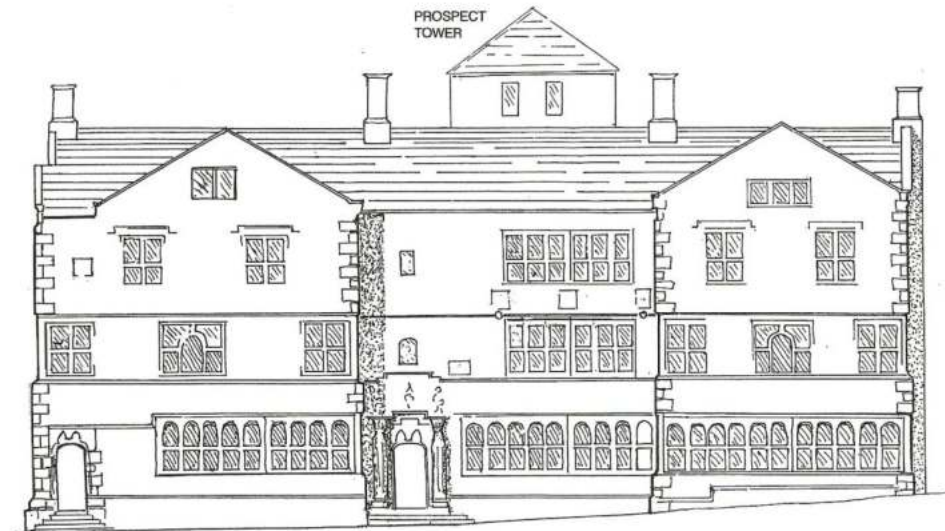
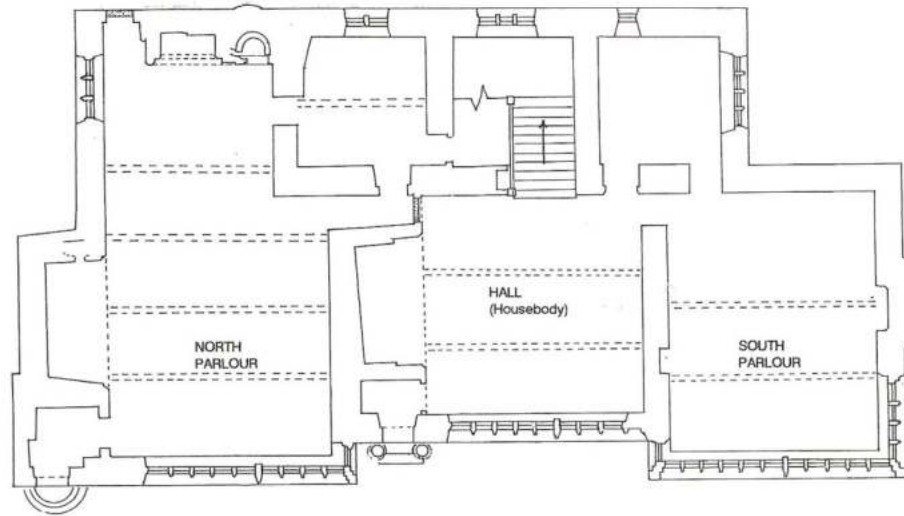
Rooms and plan types

12

Figure 1

THE FOLLY

Principal (west) elevation and ground plan.
(not to scale)



PLAN TYPES

Look for the relationship of doorway and chimney

WRATHMIRE FARM, Halton Gill

SOUTH ELEVATION

ACA 2006



shippan

parlour

inserted door

housebody

east parlour & service end.

Hearth Tax 1672 , houses and fireplaces

Kilnsey - 15 houses, 42 hearths.
 Conistone - 22 houses, 29 hearths

SELECTED STARBOTTON BUILDINGS

LILAC COTTAGE (REPORT 1662)

Lilac Cottage is the largest of three two-cell houses to be mentioned here. It has a central stack with a large arched fireplace (having individually cut voussoirs) to heat the housebody. There was probably another fireplace on the other side of the stack heating the parlour where a modern grate is now placed. The door lintel is dated 1656, and there is no reason to doubt that this also fits the stack and housebody fireplace. It is interesting, then, that this house should have had such a good stone fireplace some time before Wayside Cottage was built with its smokehood. William Fulshaw, the builder of Lilac Cottage, must have been modestly prosperous, whereas Wayside Cottage may have been the home of a widow.

The house can be identified in the Hearth Tax returns for 1672 as having two hearths, so it seems likely that there has always been a fireplace in the parlour. It is also probable that the doorway has also always been in its present position, giving a direct entry into the housebody. Harrison and Hutton (*Vernacular Houses in North Yorkshire and Cleveland*, 1984, page 228) state that 'Houses with a direct entry, usually into the main living room at the opposite end from the fireplace, are far and away the commonest type found in Craven'. All three two-cell houses surveyed in Starbotton have a direct entry in this sense.

A bread oven with square opening has been inserted into the left-hand corner of the fireplace. Such ovens are often early eighteenth century, but there is no obvious dating evidence.

The stairs wind up from alongside the fireplace, dividing by the stack and continuing up a further three steps left and right to first-floor rooms on either side. The stair window is transomed with straight chamfers. The Tithe Award map of 1847 appears to show an outshut at the back of the house that would have obscured this window. The fact that this is an early window, possibly of c.1700 if not original, confirms that the outshut was a late extension. The outshut no longer exists, except in part as a garden wall, but quoins at the corner of the house and other detail tend to confirm that it was an addition.

At some point, perhaps in the nineteenth century, the house was divided into two dwellings with an additional entrance at the parlour end. There would presumably have been a staircase in each half, but it is not clear where these were located.



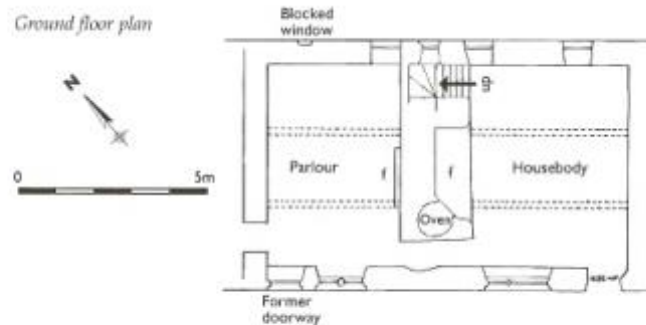
SELECTED STARBOTTON BUILDINGS

LILAC COTTAGE (REPORT 1661)

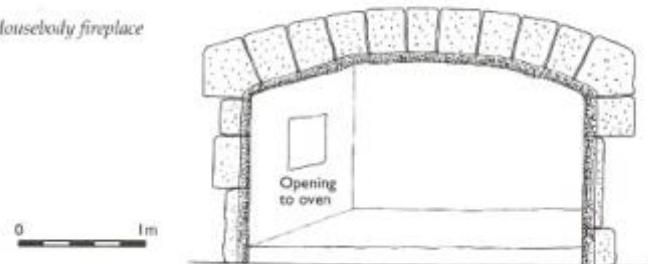
South-west elevation



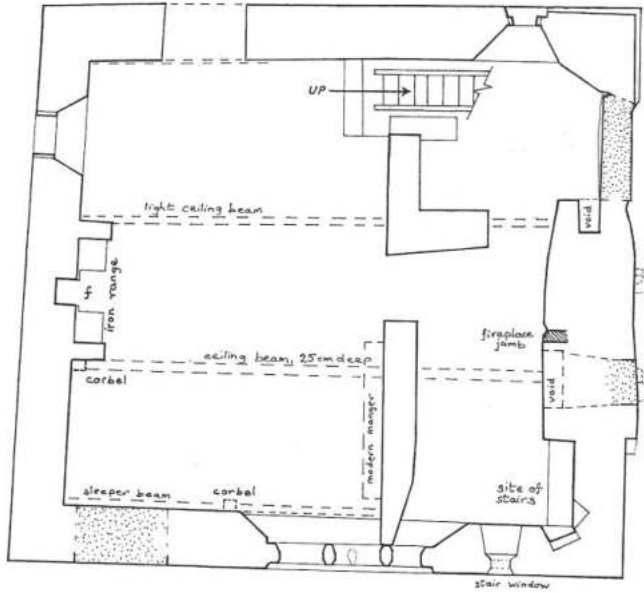
Ground floor plan



Housebody fireplace



(BLOCKED OPENINGS STIPPLED)



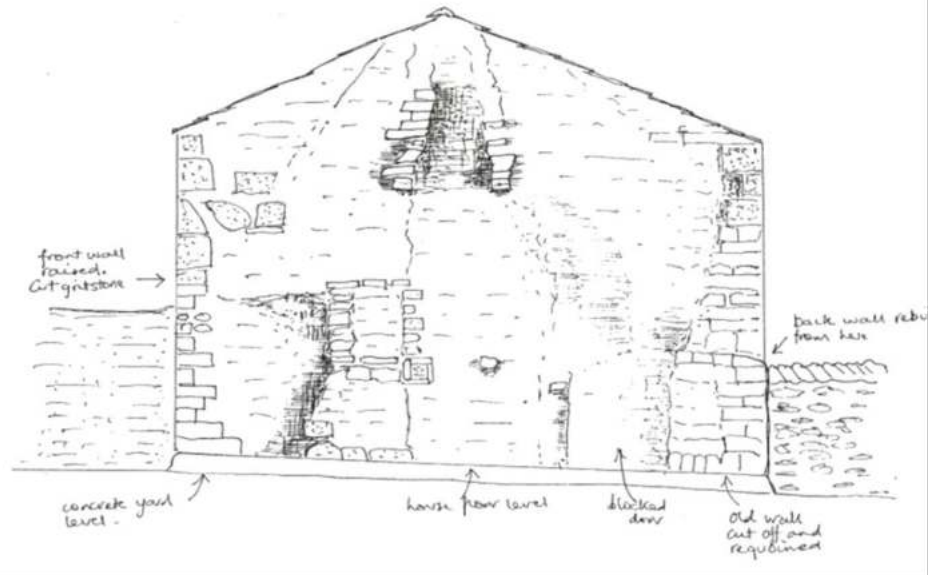
Missing rooms

SPITTLE CROFT, LITTON

Detail of east gable

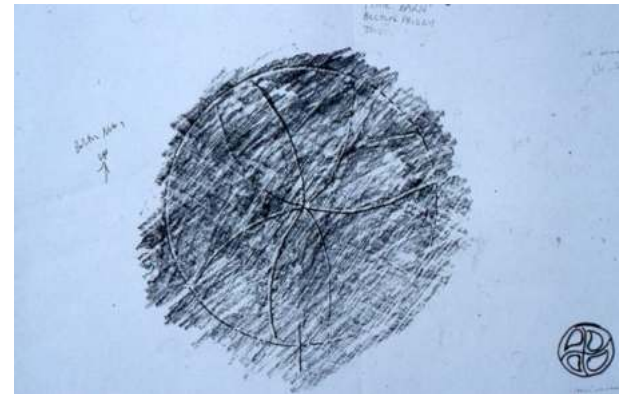


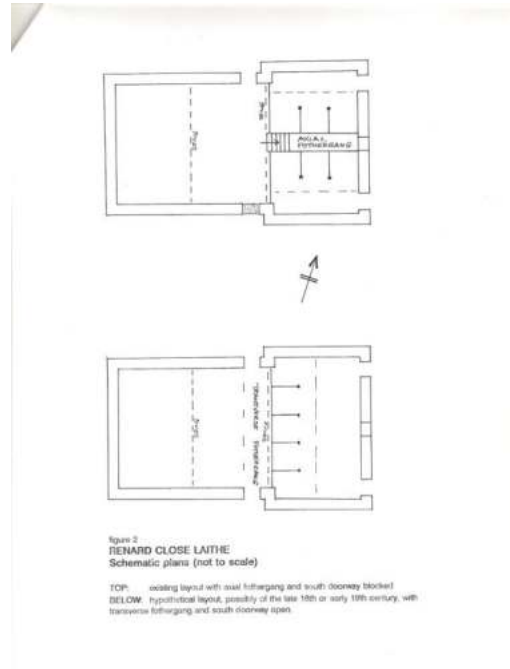
ACM 220-03



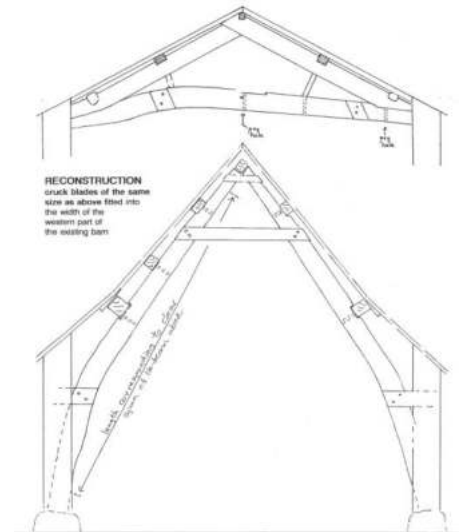


Design





one of two trusses with re-used cruck blades





Dendrochronology-
dating old timber

