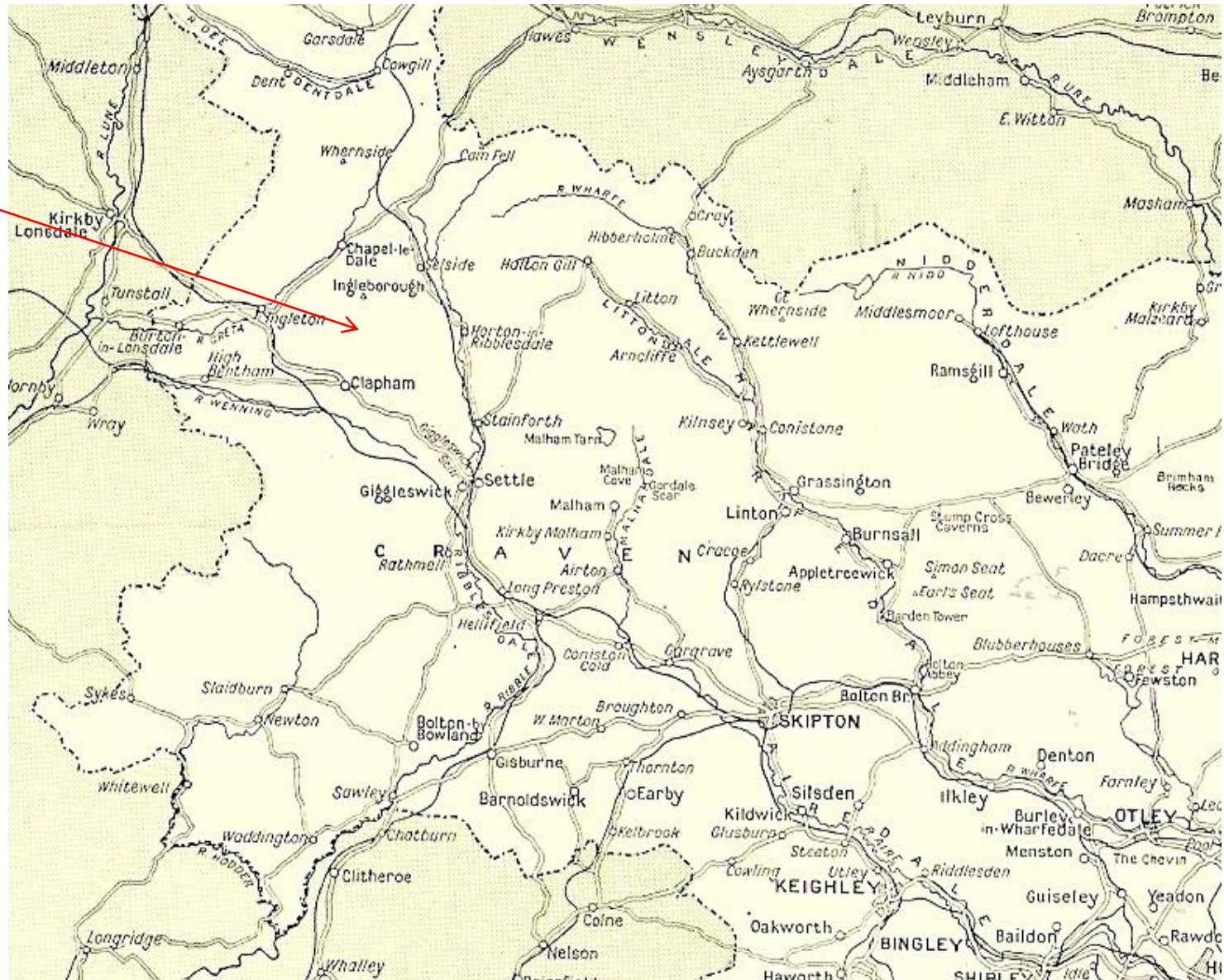


IDLP: Stories in Stone



“Boskins, Binks and Bressumers”
Recording vernacular buildings

Craven



What are vernacular buildings?

Medieval and gentry halls



Vernacular buildings
Stone barns and houses



A "great rebuilding"



Craven
doorheads



Settle datestones





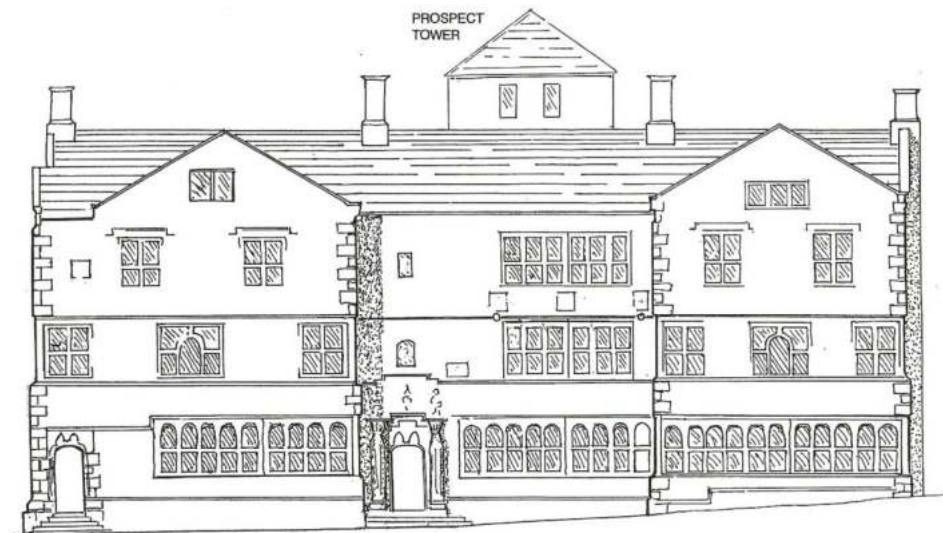
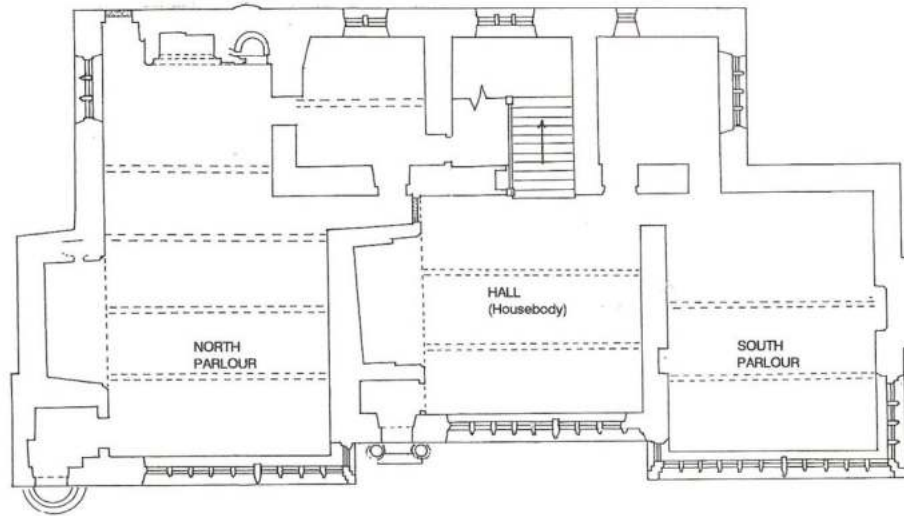
Craven masonry



Figure 1

THE FOLLY

Principal (west) elevation and ground plan.
(not to scale)



Craven timber





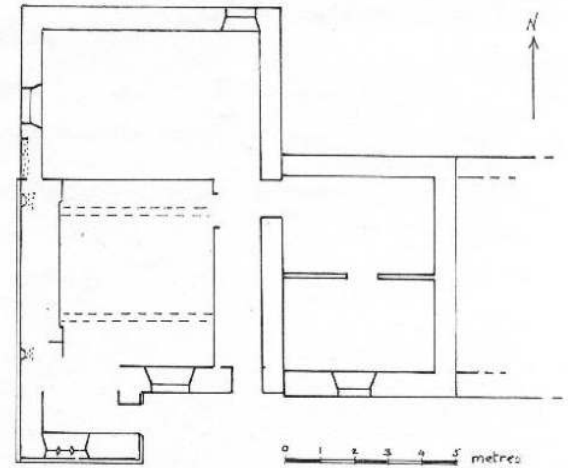
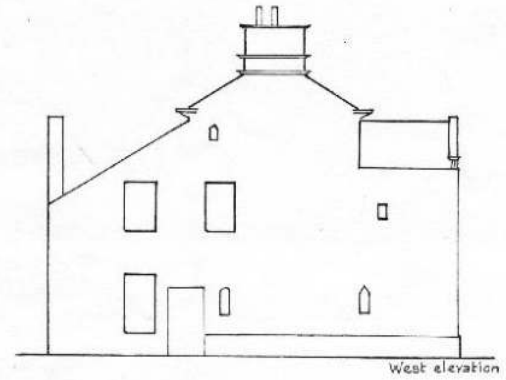
Paget Hall : YVBSG report 567

Before the great rebuilding?
Re-used timber





Recording;
Lainger House 1673
(YVBSG report 584)





Origins of farmsteads

Fell Edge farm
(Rycroft's charity
c1535)





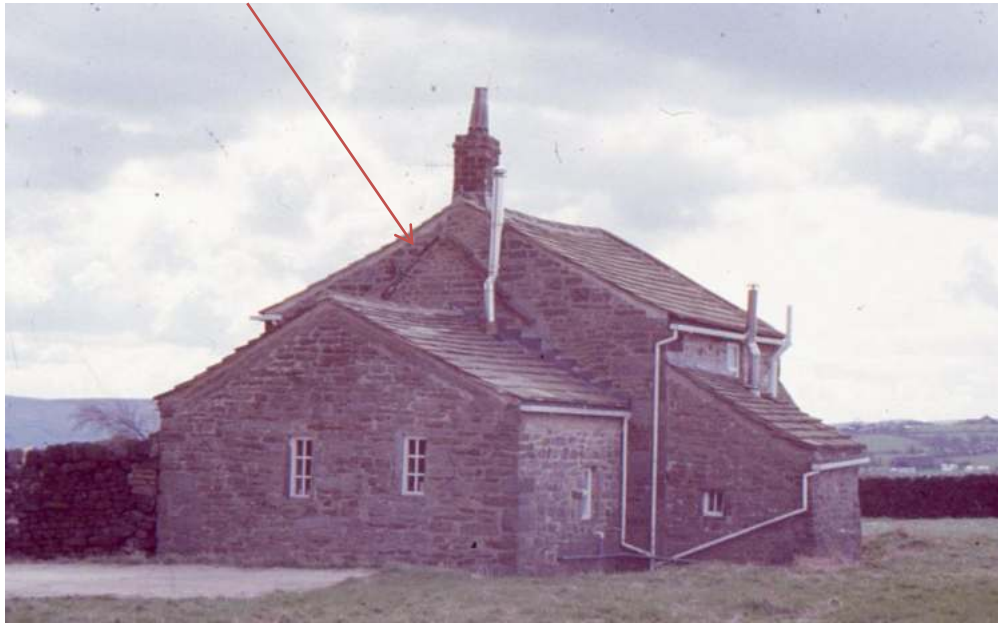
Heightened roofline

1691 heightening

Firehood

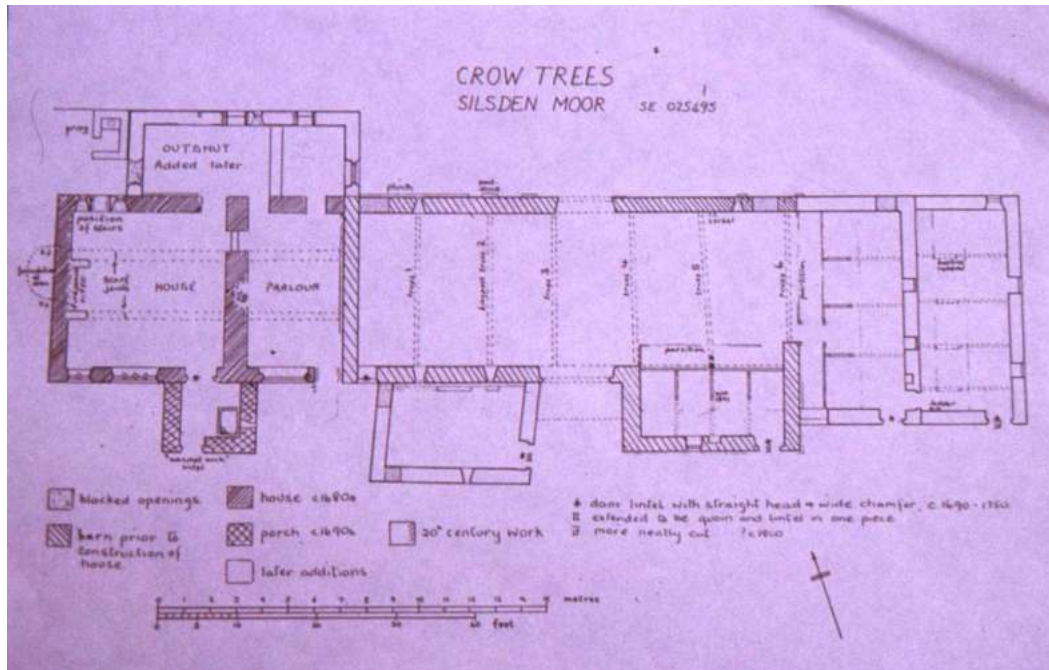
Silsden Moor;
tenanted from 1523





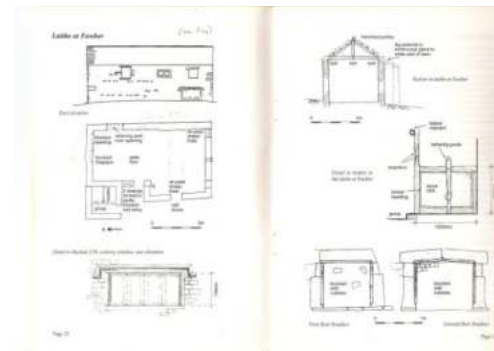
Rooflines

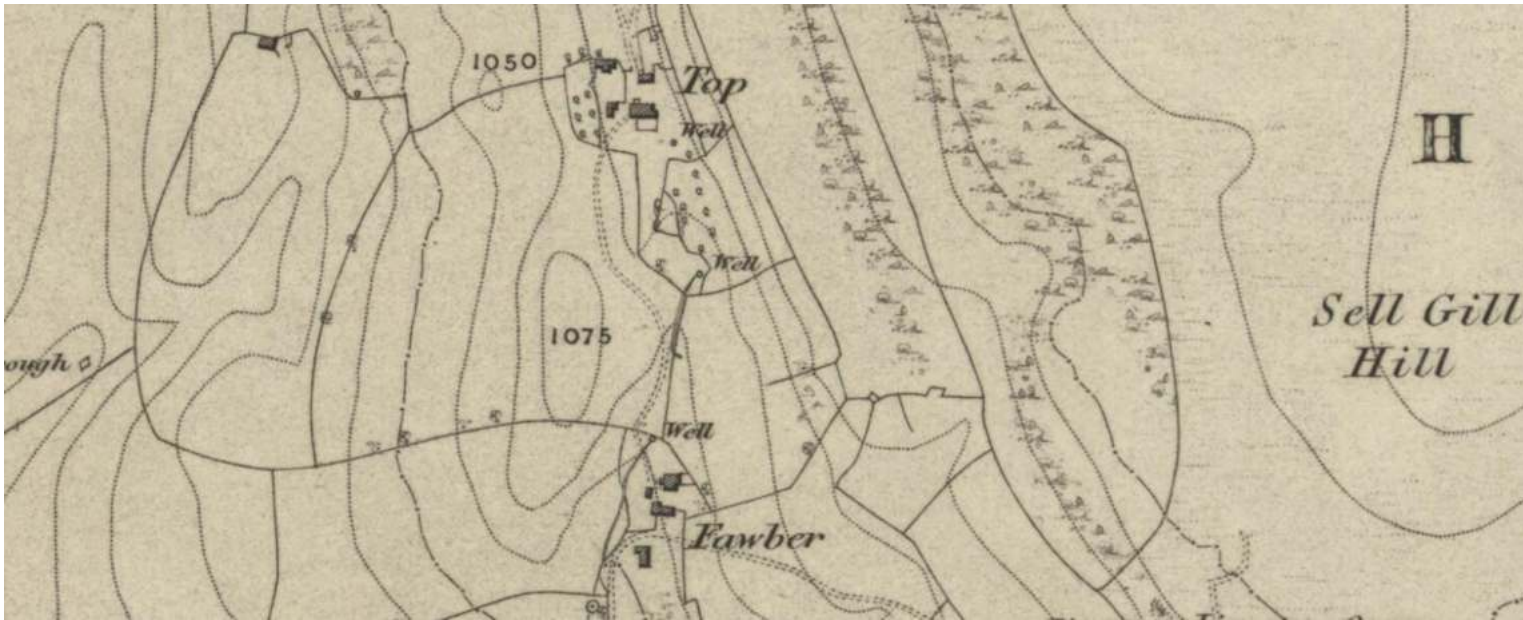




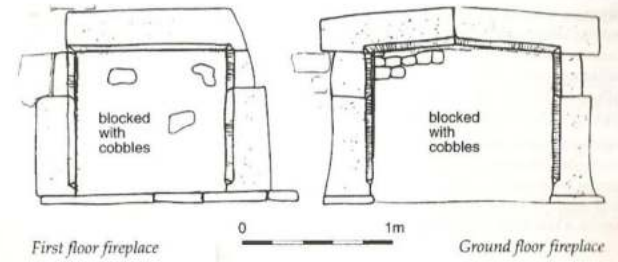
Using inventories
and historical resources

Using inventories

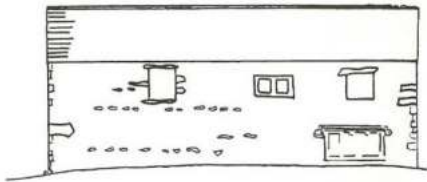




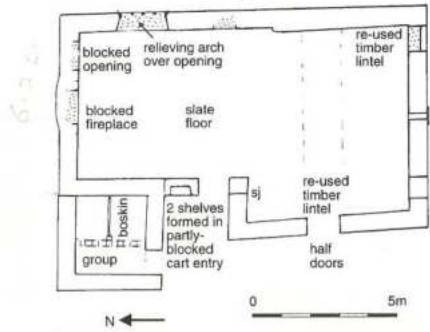
Fawber



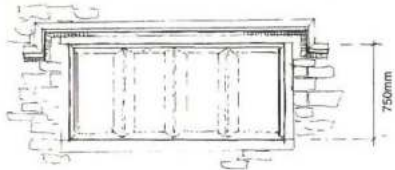
Laithe at Fawber (see P.14)

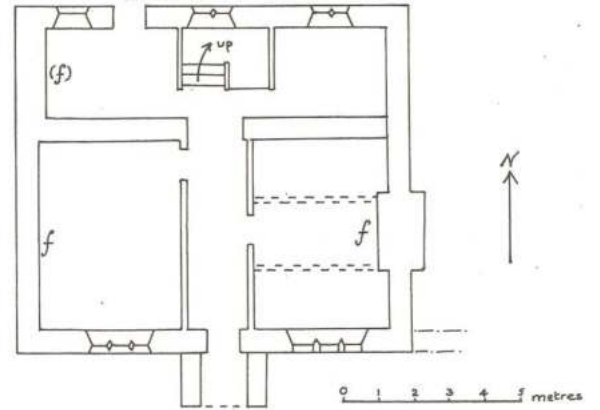
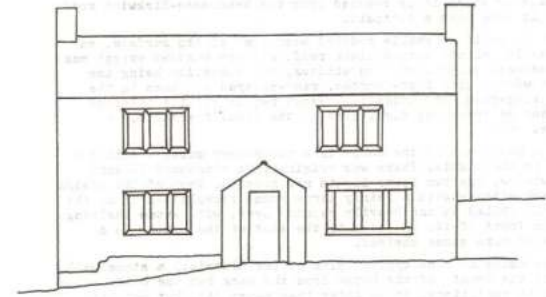


East elevation



Detail to blocked 17th century window, east elevation





Barry
Harrison
record

Fawber, (new house) symmetrical

(Inventory of Henry Wilkinson Dec 1746)

Animals - 20 cows -some at Top Farm . 96 sheep; hay in three named barns.

Turves fuel

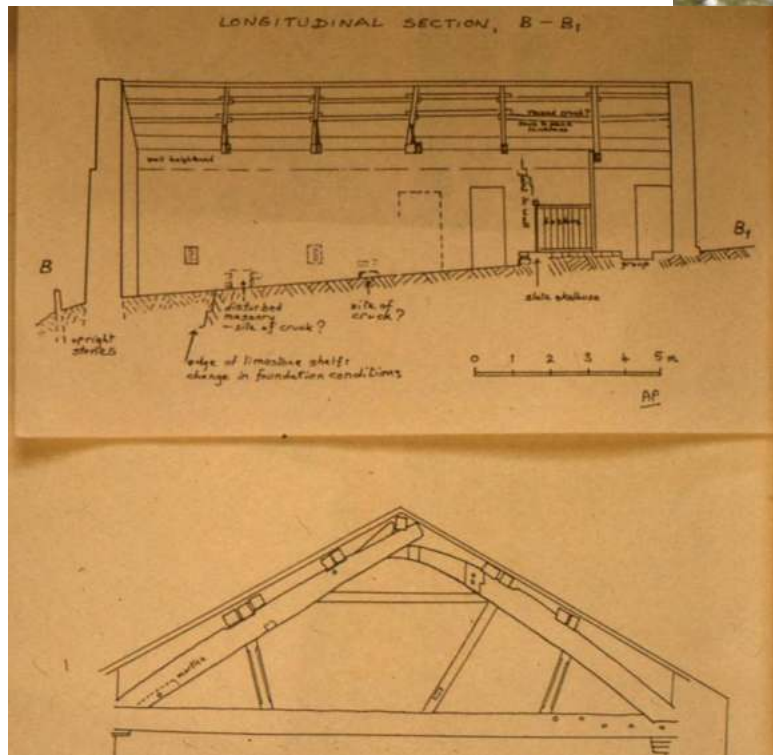
Bodystead, Little P arlour (with bedding), buttery and kitchen (separated by stair);

Two chambers over.

Houses or barns?

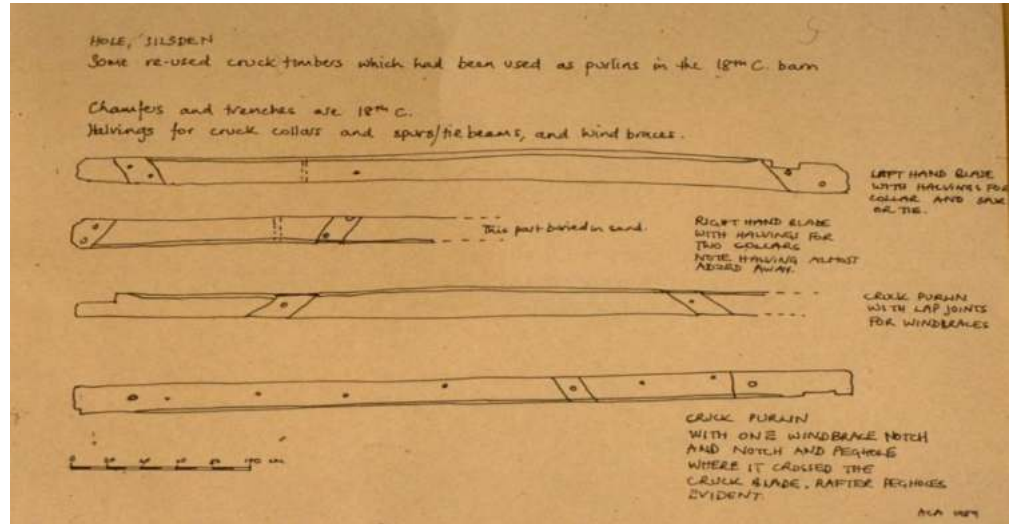
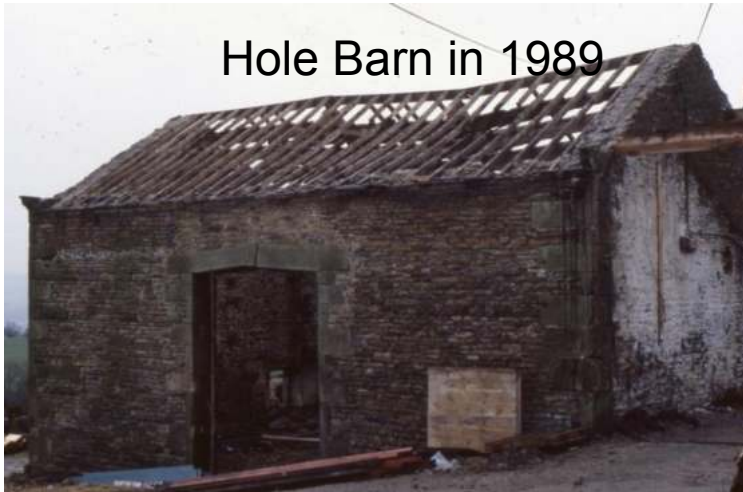


Barns





Hole Barn in 1989





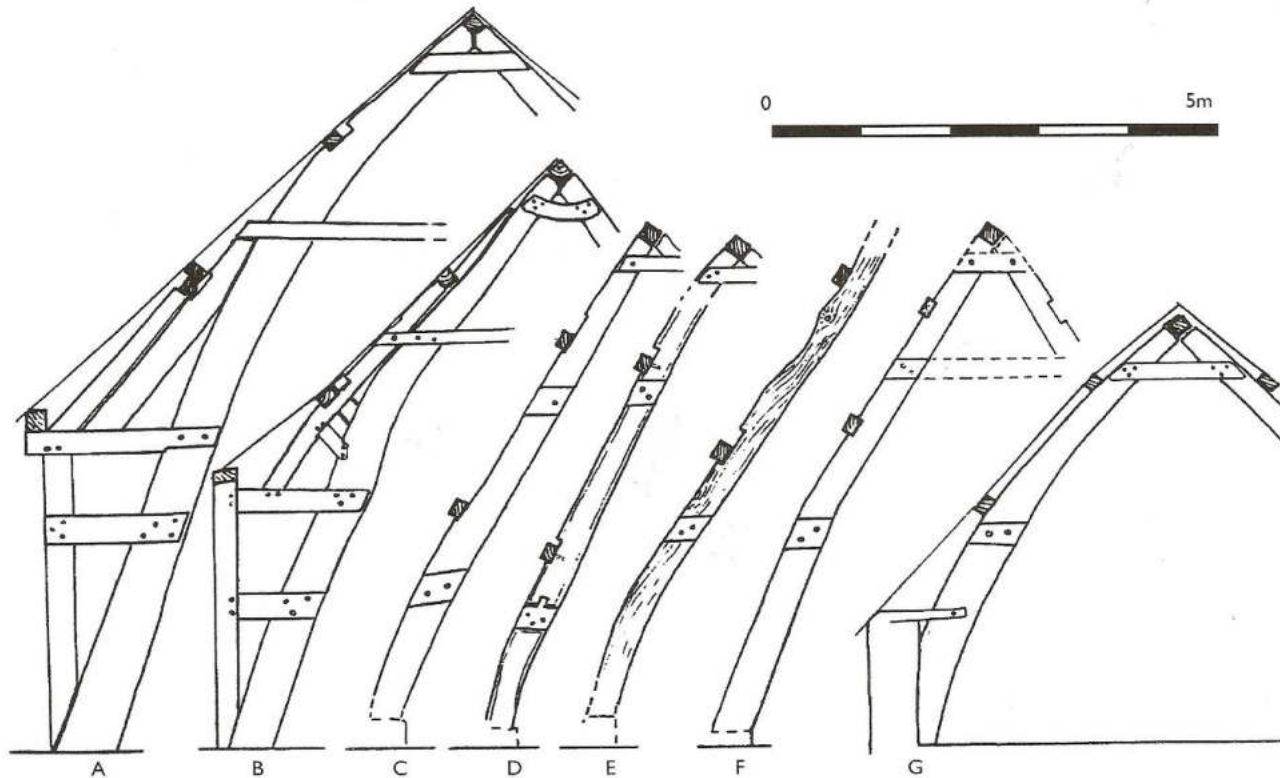
Standing buildings of
cruck construction
in Craven

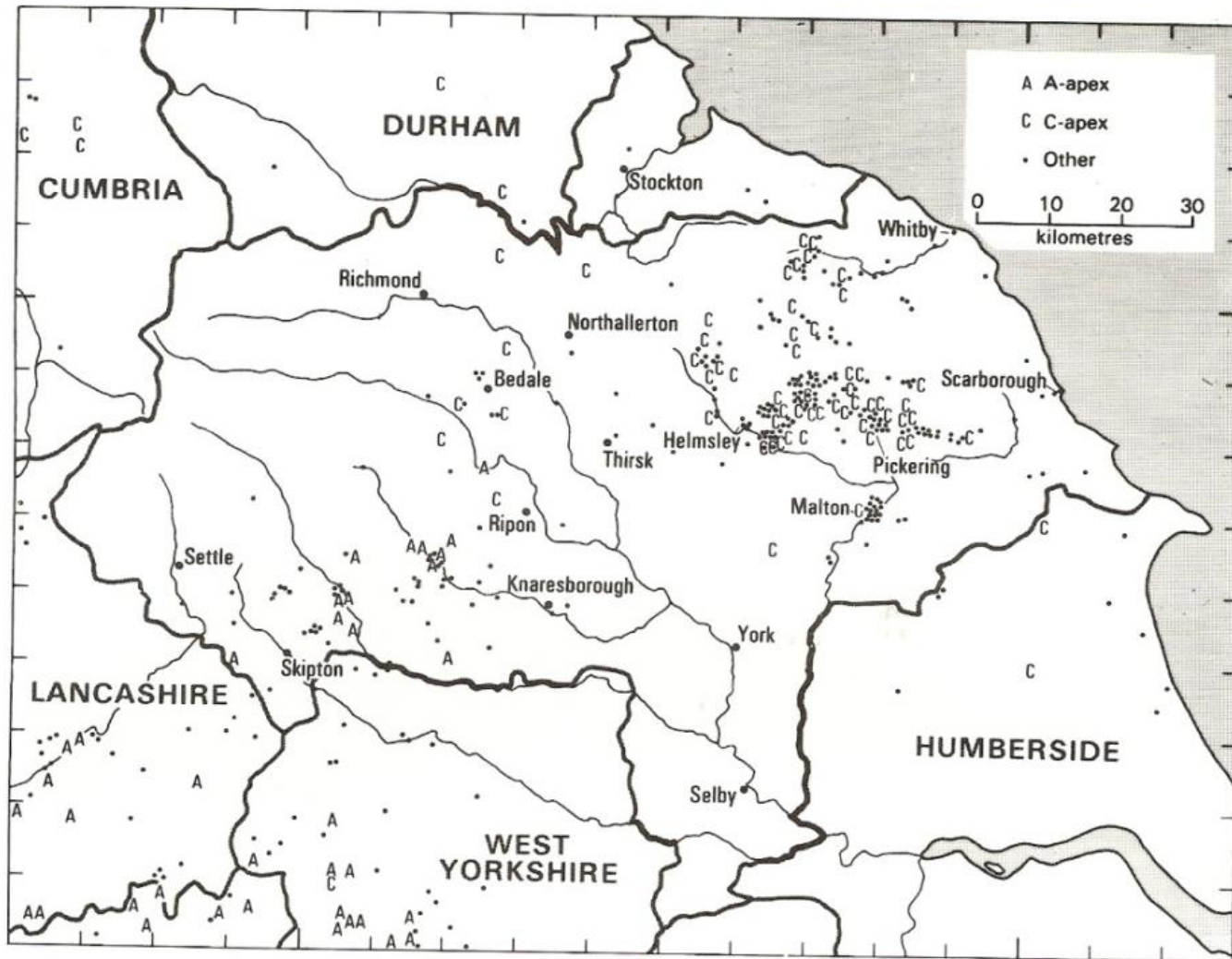
Reconstructing Craven crucks; type A apex

Figure 1: Crucks in Craven (and its Lancashire margin)

A comparison of crucks from standing buildings (A, B and G) with some reconstructed examples (C-F). All drawings are to the same approximate scale. Locations are: A, Stonyhurst, Lancs.; B, Hacking Hall, Lancs.; C, Small Banks, Addingham; D, Park House, Eastby; E, Cross Green, Lothersdale; F, Tithe Barn, Lothersdale; G, Drebley, Barden. (Drawings by Arnold Pacey)

CRUCK BUILDINGS IN THE CENTRAL PENNINES





The Cruck Catalogue as shown in Harrison & Hutton (1984)

Figure 8.36. Crucks with A, C, and other apexes. 'Other' includes apexes B, E, F¹ and G; also those that are concealed or missing, and re-used crucks with lost apex. Provided by N.W. Alcock.

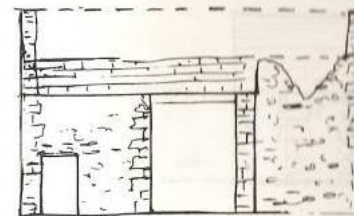


Low Birkwith in 1995

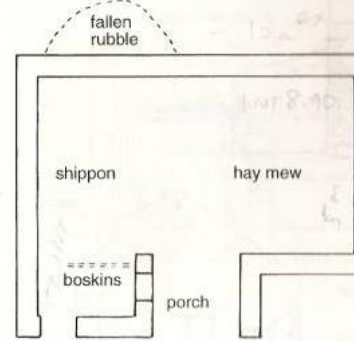


Low Birkwith – Barn D (Report 1501)

(see p 5)



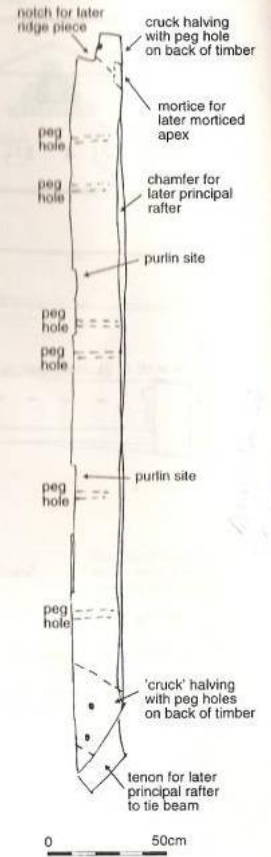
Sketch of south-east elevation



0 5m



Sketch reconstruction of roof truss in barn D

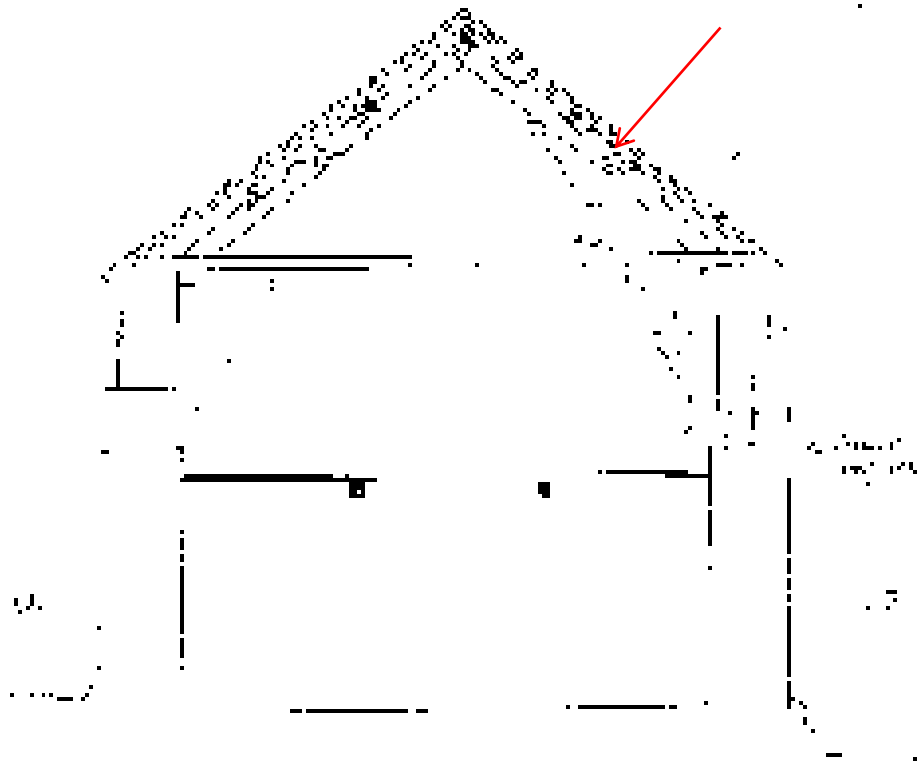


Reused timber with halvings found in Barn D. The timber has been recut and straightened.

Clapham

Shedding of water - rainwater, snowmelt, etc. into gutter

As rain falls, it runs down the roof
into the gutter, which is designed to





Chapel le Dale