



Airton Friends Meeting House

A vernacular building survey

by

Alison C Armstrong

Google earth

Exit Street View

© 2015 Google

Report a problem

The Meeting House and Nook cottage





What are vernacular buildings?



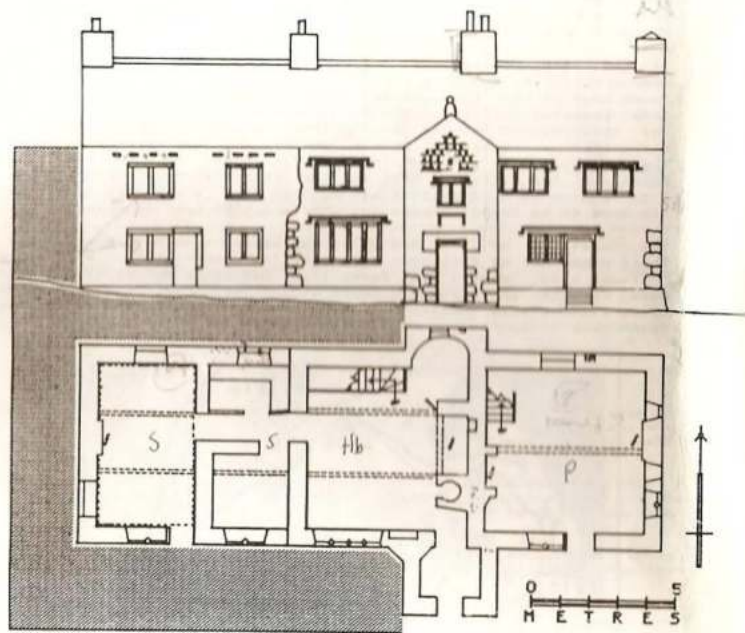


Vernacular buildings in Craven.
Many farms were monastic but
rebuilt in the 17thC





Truss over E. cell.



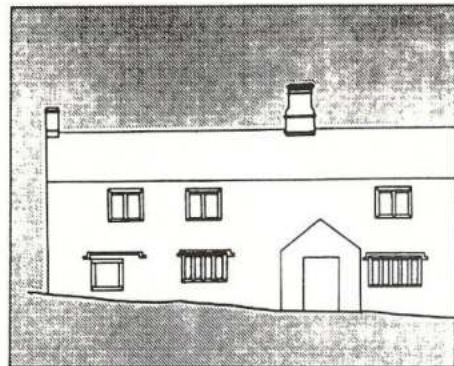
765 Hill Top Farm

Stone house dated 1617. Originally two cell lobby entry, one external door, shallow rectangular stair turret to N. Full height gabled porch added before house extended to W. in 18th Cent. providing new service rooms. Door to parlour blocked when oven relocated. E. end divided off to make cottage at this time. Very rare wall paintings in parlour and bedroom.

8

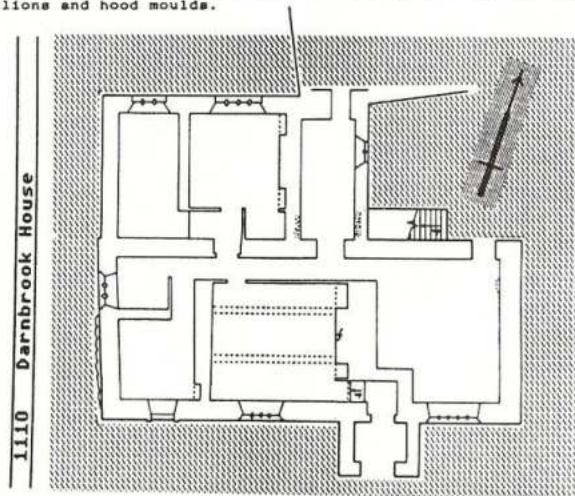
MALHAM
YVBSG records

DARNBROOK House. 1664



0 1 2
METRES

17th Cent. stone house. Single pile, three cell with single storey porch, converted to double pile by 19th Cent. two cell addition to N. Lobby entry plan, door to E. cell blocked when firehood removed. Unusual internal doorhead inscribed 1B:1664:MB suggests later build has replaced stair turret or service wing. Four and five light windows with hollow moulded mullions and hood moulds.



MALHAM

9

Not vernacular buildings; -
Barden Tower, Farnhill Hall,
Hellifield Peel, built by the
nobility and gentry



Bolton Priory; a medieval timber-framed barn c. 1518



Cruck-framed barn in Barden.
Pre 1600



The Meeting House



First edition OS map

William and Alice Ellis's house 1696



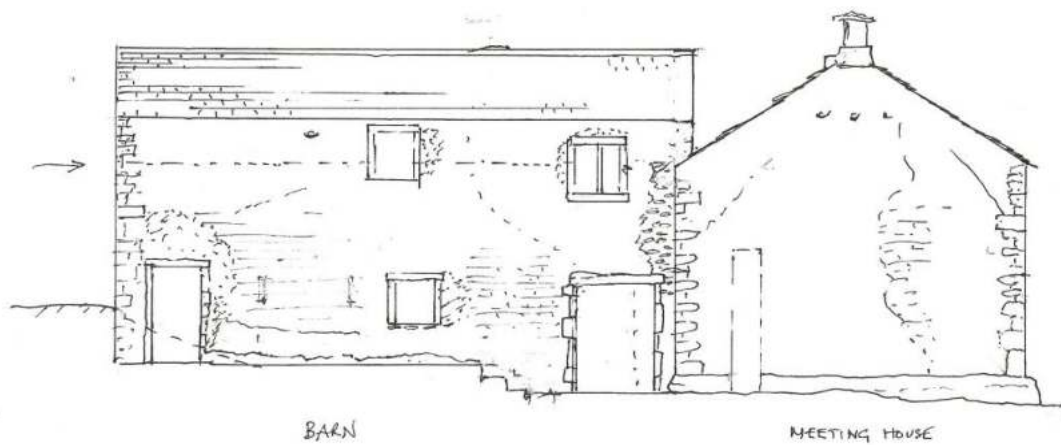
Examining the building structure; The east gable and north roadside of the Meeting House



The east gable



AIRTON MEETING HOUSE: EAST SIDE
0 1 2 3 m.



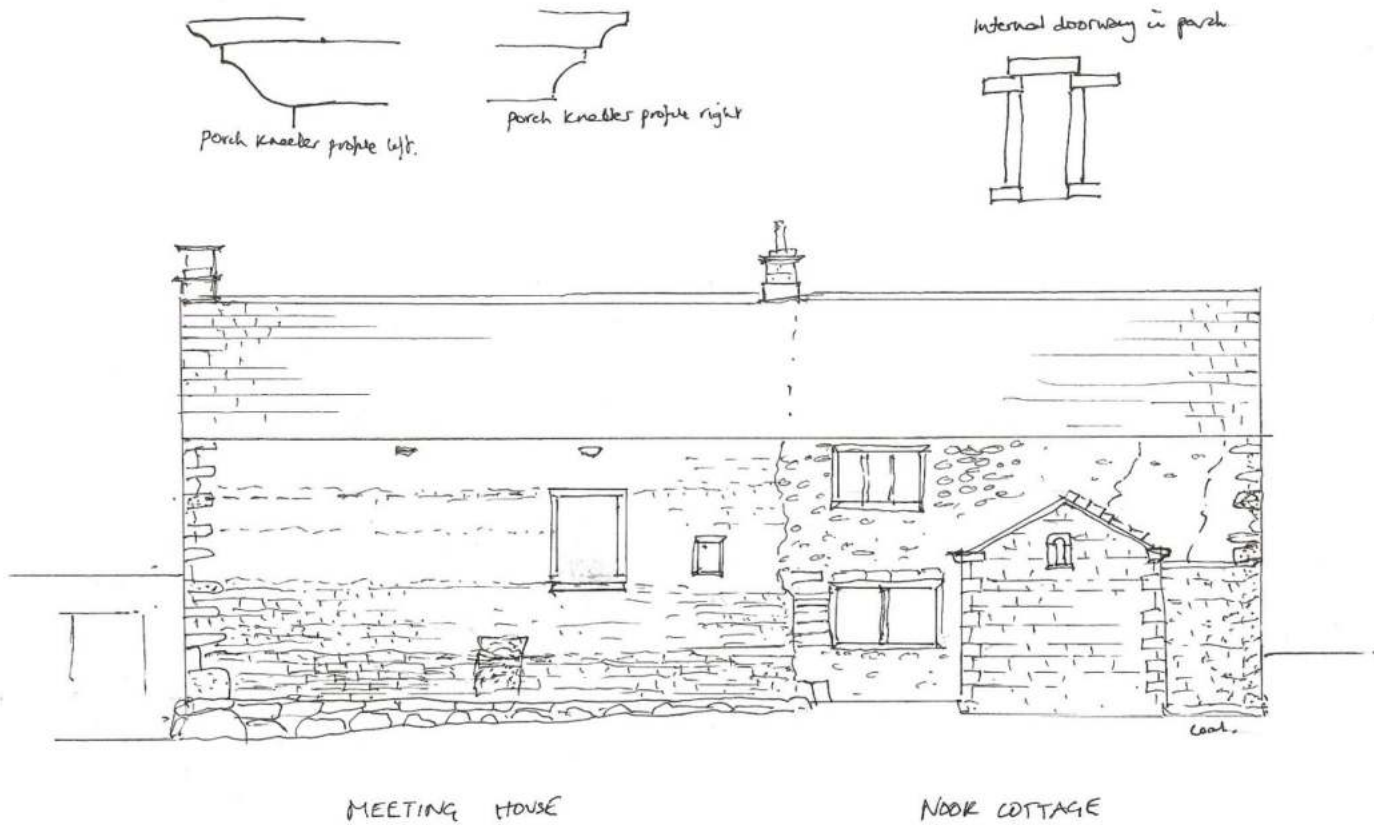
Plinths and low rooflines



The roadside or north facade

Fig 2

AIRTON MEETING HOUSE. North elevation



Nook Cottage



Nook cottage



Nook cottage and the barn

fig 4.

AIRTON MEETING HOUSE - West elevation



BARN

ACA 2016

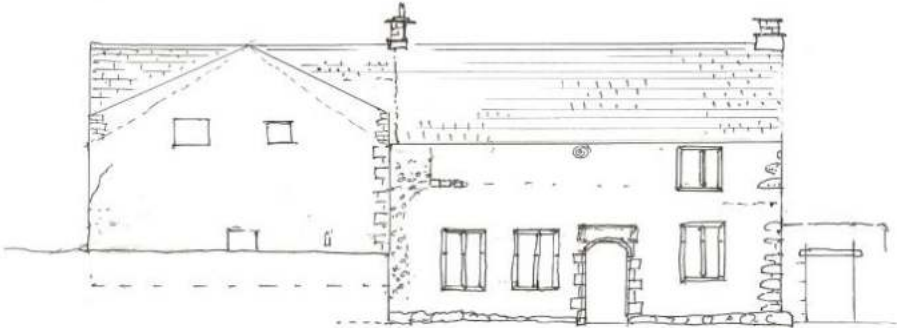


Bank barn at Thorns



The south side; showing barn gable and the Meeting House south front below it

Fig. 1. AIRIDN MEETING HOUSE: SOUTH SIDE
0 1 2 3 4



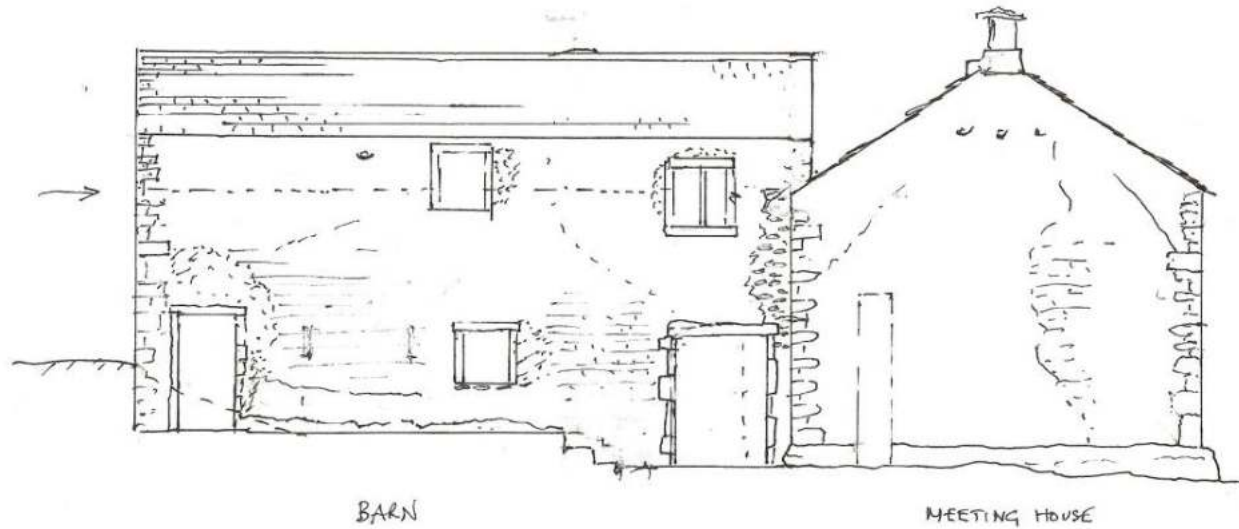
BARN (upper end)

MEETING HOUSE

ACA. 206

East elevation of the barn

Fig. 3. AIRTON MEETING HOUSE: EAST SIDE
0 1 2 3 "



ACA 2016

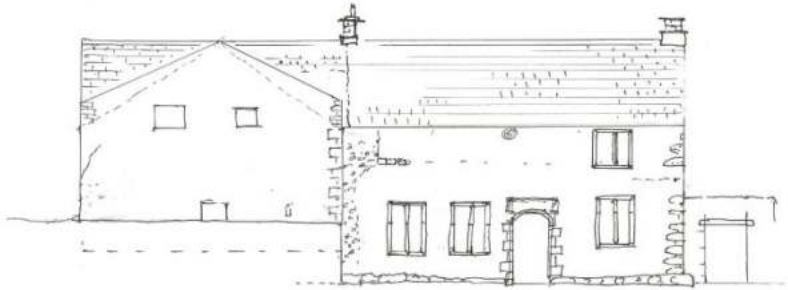
Heightened roofline of barn





Detail of doors and windows and plinth

Fig. 1. AIRTON MEETING HOUSE: SOUTH SIDE
0 1 2 3 4



BARN (upper end)

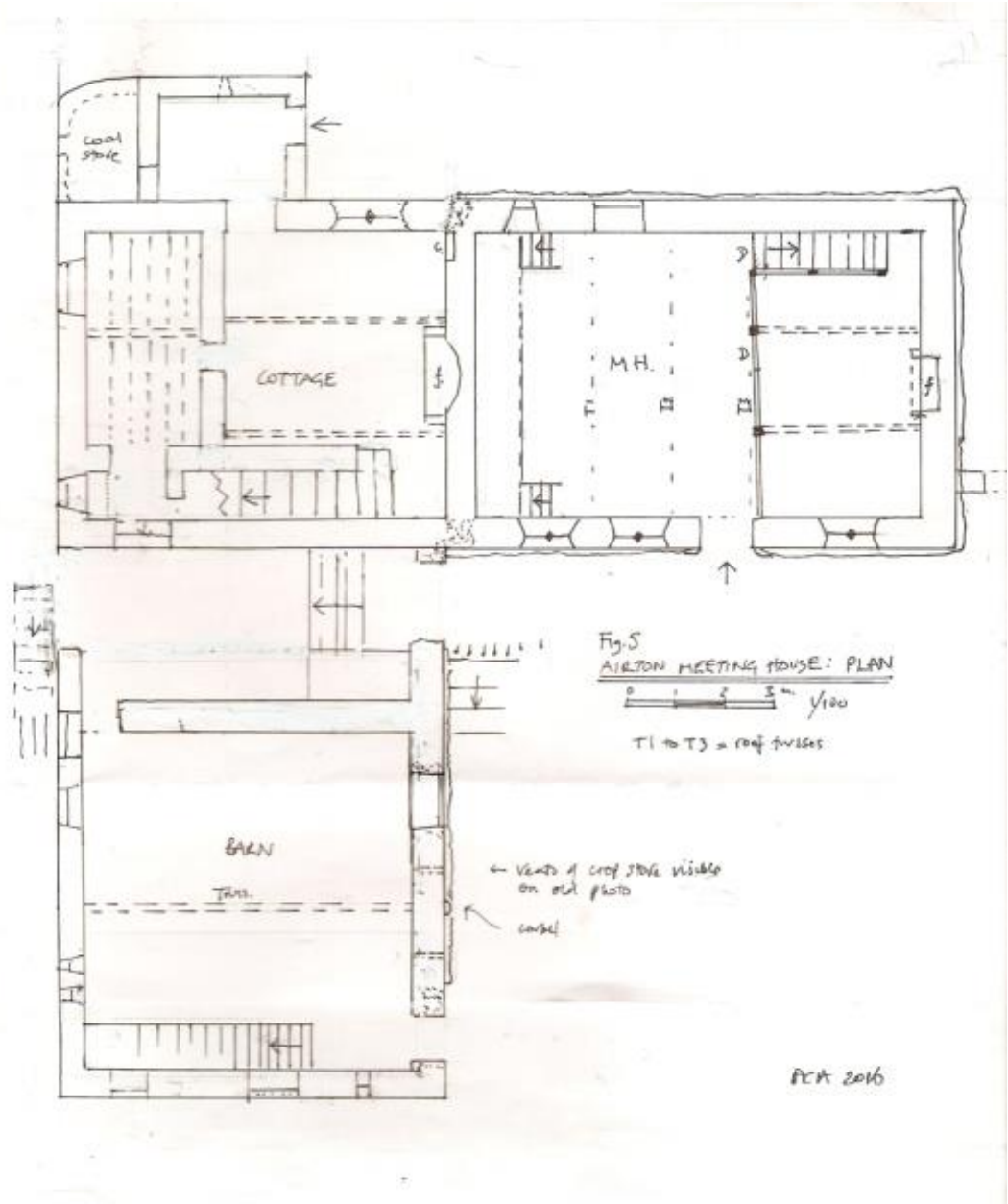
MEETING HOUSE

Acn. 206



AIRTON MEETING HOUSE, AT AIRTON.

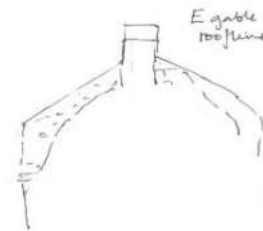
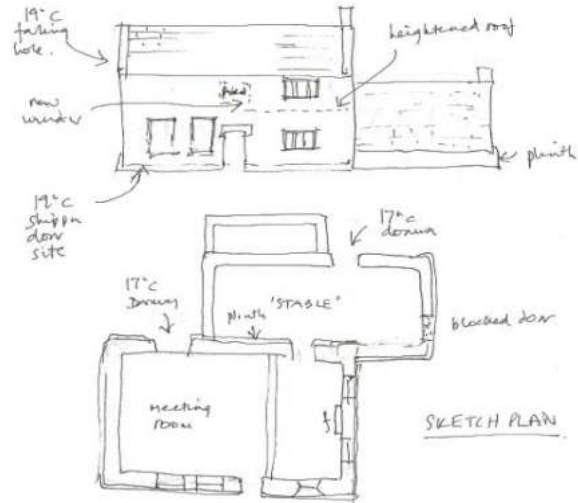
Plan of the building complex



Other Meeting House plans



FOX HOUSE, RYLESTONE



Arch 2011



Some other meeting houses

Settle; Addingham;
Rylstone



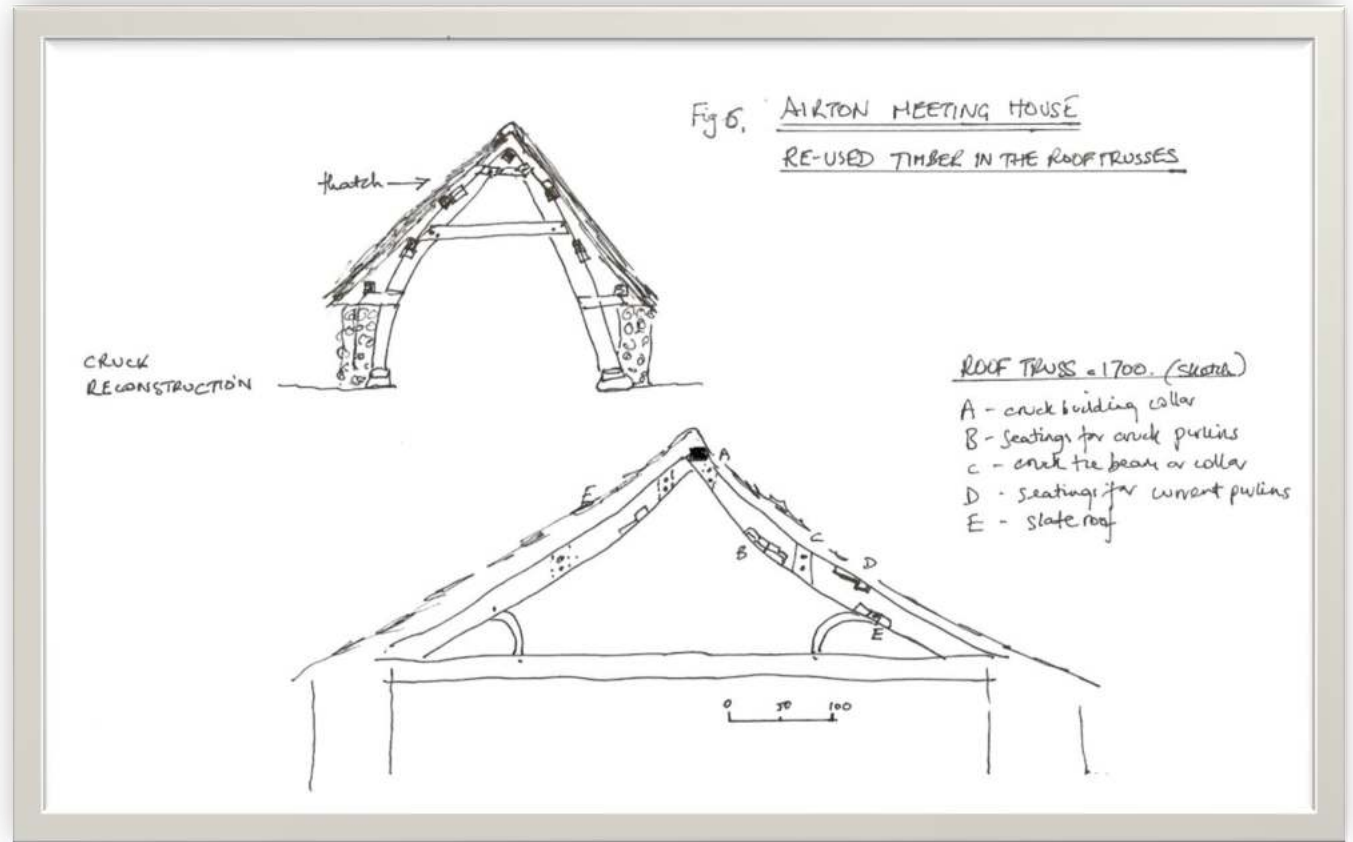
62. Friends Meeting House was built in 1689 after the passing of the Toleration Act. It was built in an earlier Quaker Burial Ground by Anthony Myers who lived at Farfield. The photograph is taken from a water colour by E. Stirling Howard made in 1888. The simple furnishings (some of which remain) had probably been in the chapel since it was first built. The stools were used for resting coffins on.



Interior features; The Meeting House roof



Re-used cruck timbers



Recent dendrochronology dates of c.1500

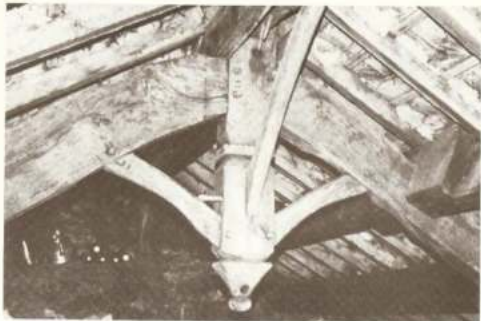


Figure 8.35. Langcliffe, Manor Farm (678). Farmhouse dated 1678 in a village near Settle, of axial stack and direct entry plan, dendrochronologically dated in both stone and timber. See Figures 7.8, 9.6, 9.14.

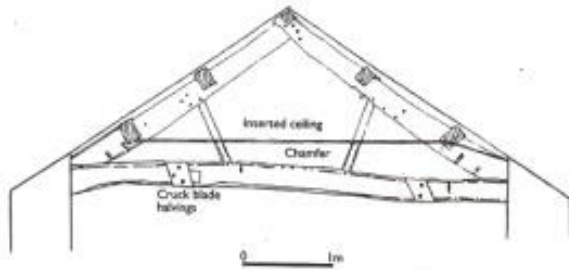


Principal rafter no.3
with roof strut
in a former cruck half-lap joint.

Note carpenter's red chalk
lines surviving.



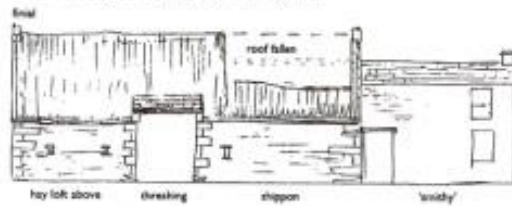
Figure 2: Park House, Eastly
 Roof truss over the housebody whose tie-beam and principals are formed from three cruck blades. (Drawing by Alison Armstrong)



The lost crucks of Craven



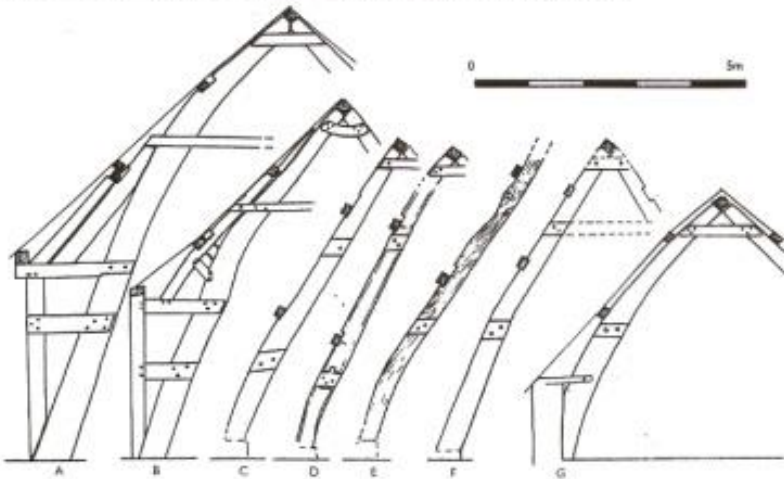
High Little
 Elevation drawn from old photographs, looking north



Shippon tie beam, notched for timbers

Figure 1: Crucks in Craven (and its Lancashire margin)

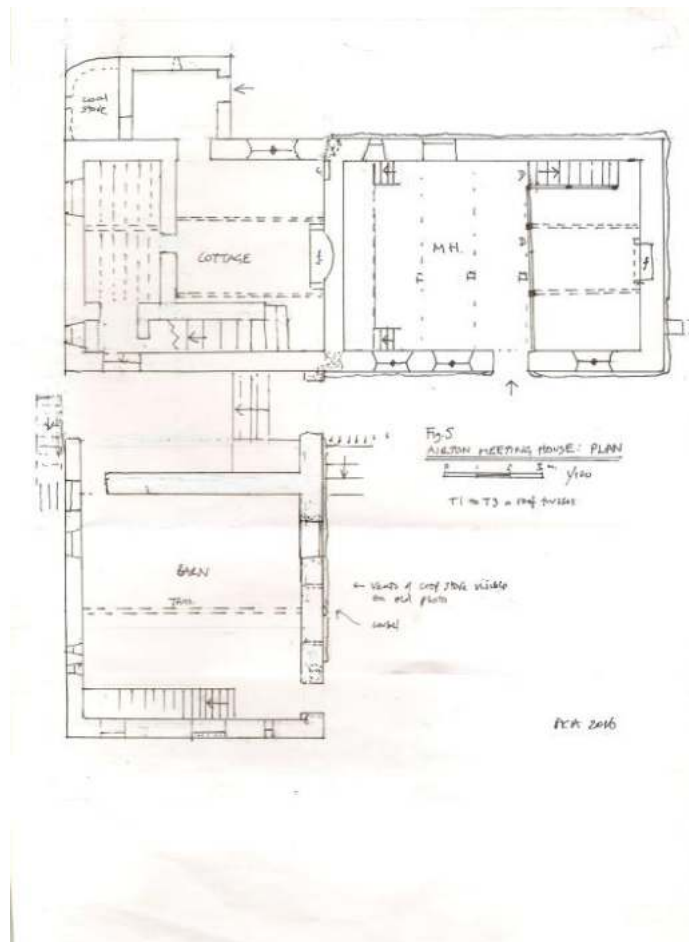
A comparison of crucks from standing buildings (A, B and G) with some reconstructed examples (C-F). All drawings are to the same approximate scale. Locations are: A, Stonyhurst, Lancs.; B, Hacking Hall, Lancs.; C, Small Banks, Addingham; D, Park House, Eastly; E, Cross Green, Lothersdale; F, Tiffe Barn, Lothersdale; G, Drebley, Barden. (Drawings by Arnold Pacey)



Evidence for cruck buildings

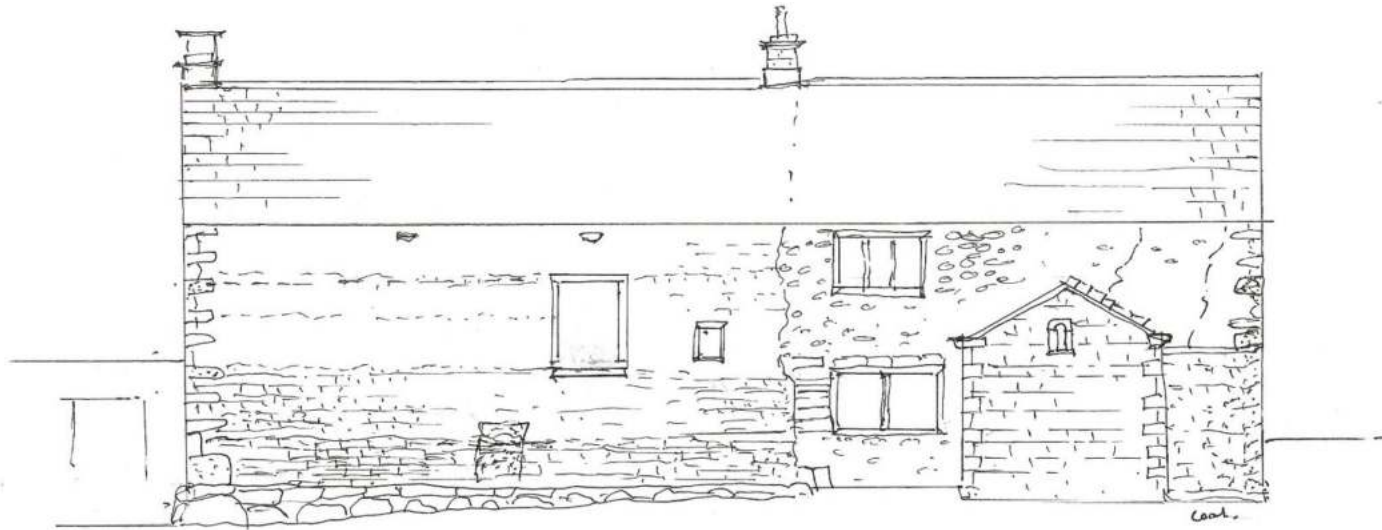


Interior - Timber and iron hinges and latches



Daisy wheel markings





MEETING HOUSE

NOOK COTTAGE

ACR 2016

THE END