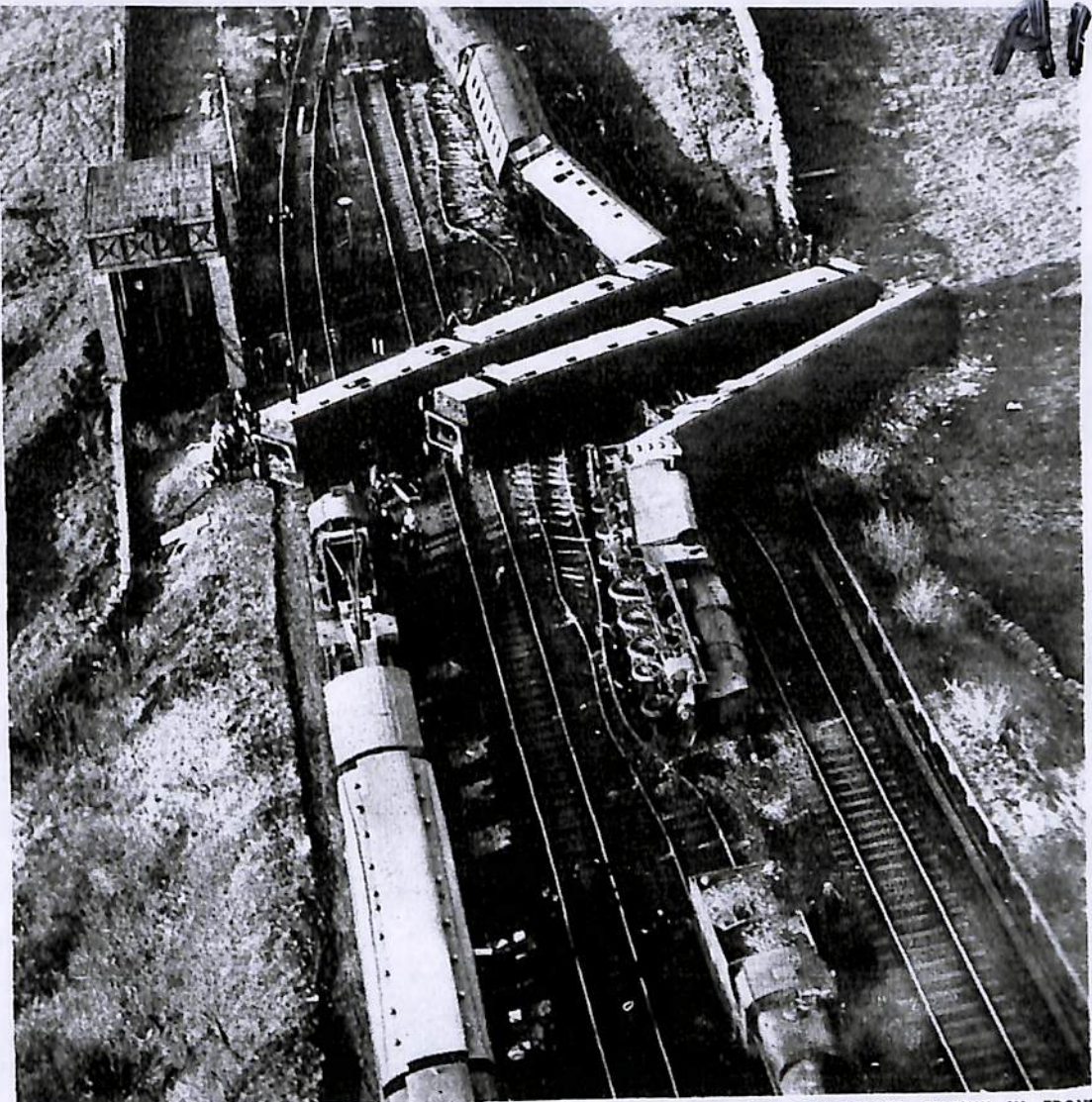




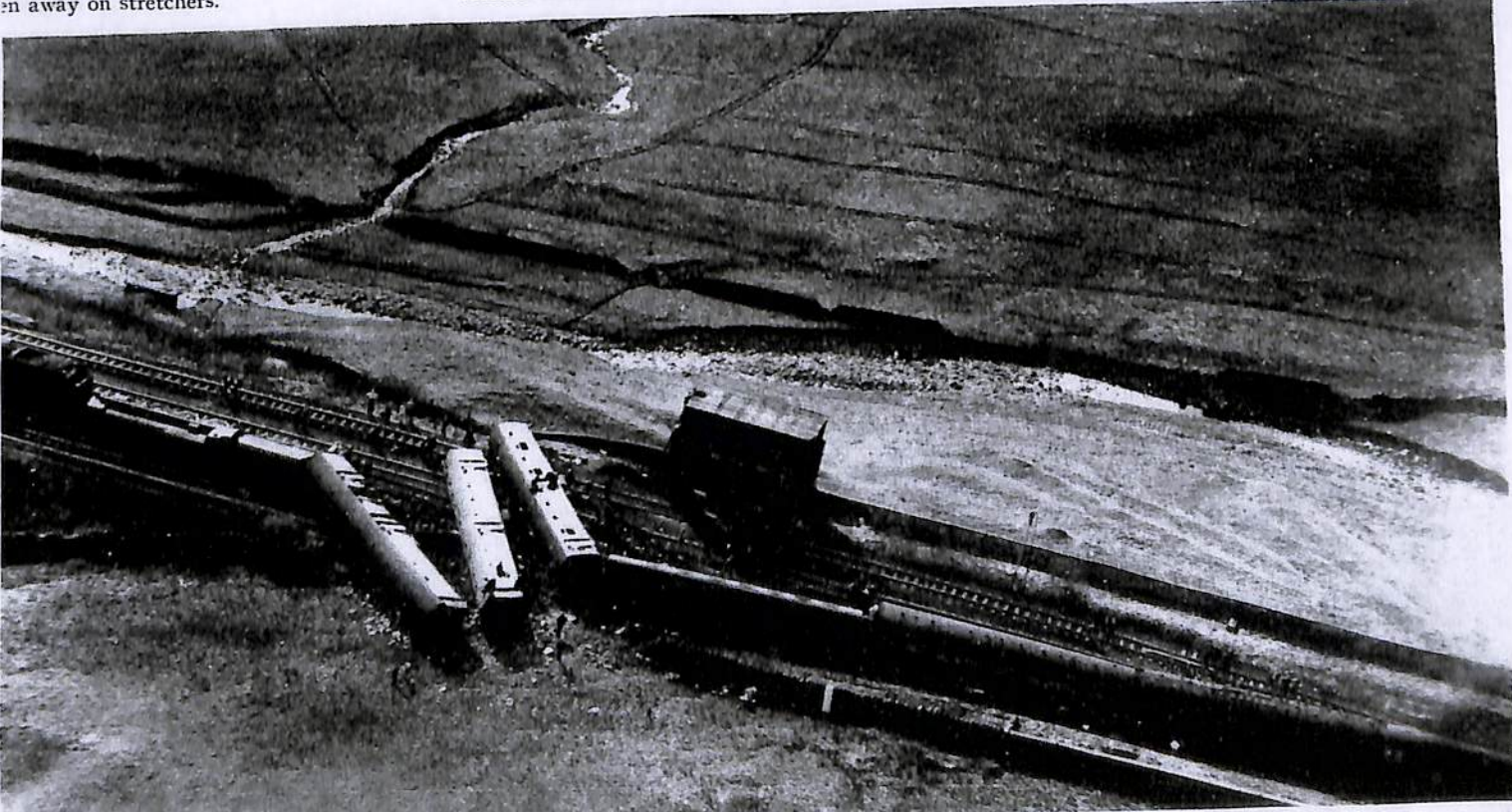
ENGINES OF THE "THAMES-CLYDE" EXPRESS
THE GRAVEL BESIDE THE TRACK: The express jumped the rails near Yorkshire, four coaches being overturned. The 200 passengers was killed, but people were injured, at least six driver and fireman of the overturned d to jump clear and were unhurt.



Remarkable circumstances attended the accident last week on the Yorkshire Moors. There were no fatalities, despite the train being overturned, and, in the second place, the train arrived at this lonely spot after an hour, doctors, nurses and ambulances arrived to the scene by radio through headquarters at Birkenshaw, near Bradford. Ambulance officials afterwards expressed their appreciation of the time-saving which was achieved. The train was a quarter of a mile south of Blea Moor station, a mile-and-a-half long, and a few hundred yards from the Ribbleshead viaduct. The viaduct was demolished 30 yards of a wall before coming to rest on its sides. The rails were twisted from the rails. Only the pilot engine was upright. The usual pilot engine, which was not derailed, and drove the express on steam.

Mr. J. G. Settle, took charge of the waiting at Ribbleshead Station and gave first-aid treatment to the passengers. The ambulances arrived to take them to the hospitals at Bilton, Kendal, Lancaster and Wetherby. A nine-year-old boy and his mother were rescued through the window of their compartment beneath it. Efforts were made to get the train off with an axe through the steel roof but it was some time before they could be taken away on stretchers.

THREE OF THE OVERTURNED COACHES LYING ASTRIDE THE TRACK, AND THE OVERTURNED ENGINE IN FRONT OF THEM: The accident occurred in a cutting just north of Ribbleshead Station and below the peak of Whernside. The express had just emerged from the 2,269-yard-long tunnel under Blea Moor. Although a locomotive and seven coaches ran off the rails none was telescoped. Permanent way for 150 yards was torn up.



ON THE YORKSHIRE MOORS VIEWED FROM THE AIR AFTER THE CRASH: It will be seen how two of the overturned coaches swung off the track and made a stone wall flanking the permanent way. One of the other coaches was a dining-car. It turned over at an angle of 45 degs., and the diners emerged through the windows, at once rendering help to the injured in the coaches which had completely overturned. It was half an hour before outside help reached the crash. Doctors had to be called from Ingleton, Settle and Hawes. The use of radio communication speeded the gathering of the rescue forces.