

A10

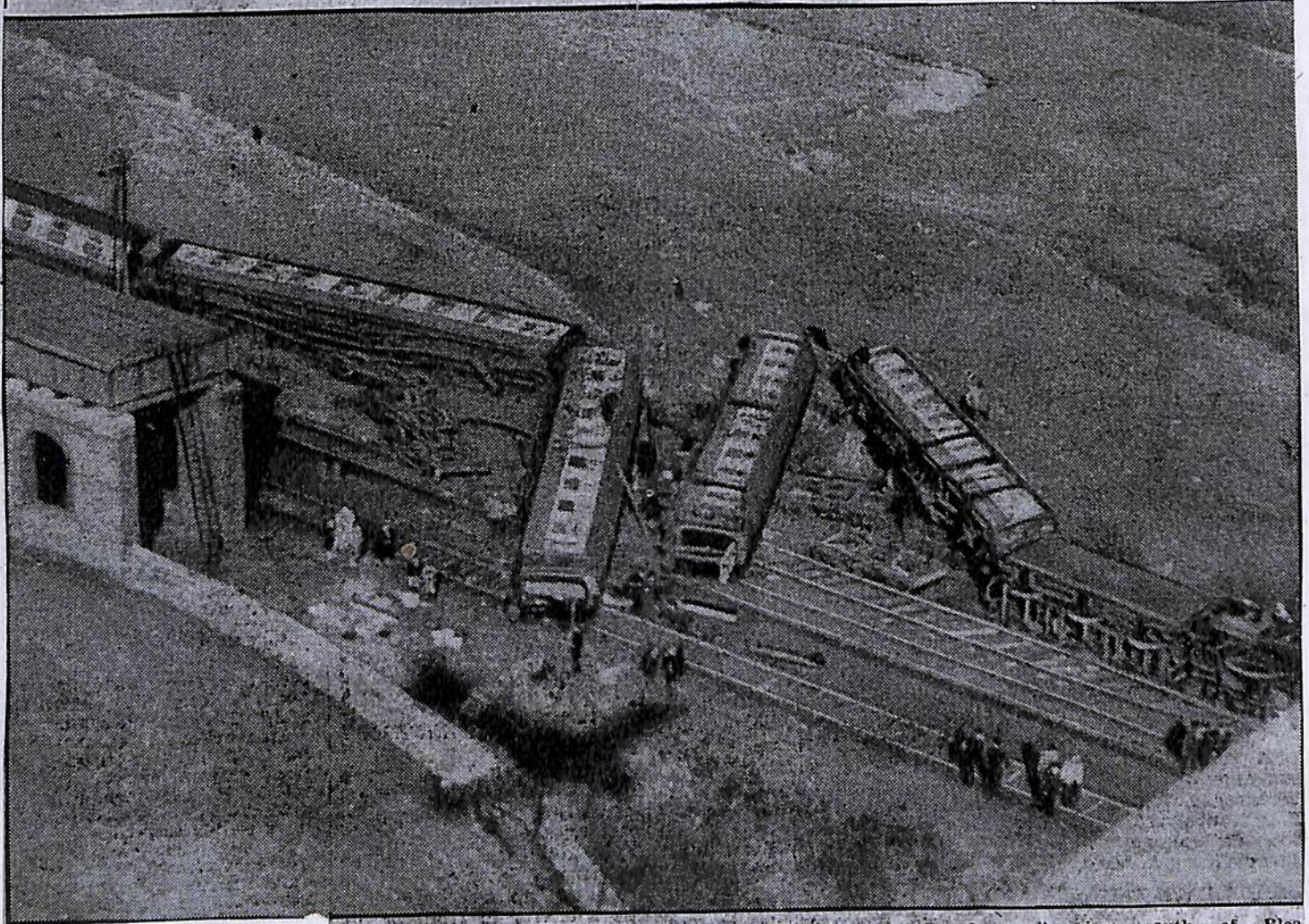
DAILY HERALD

No. 11264 (B)

SATURDAY, APRIL 19, 1952

PRICE

ALL THIS—AND NOBODY KILLED



THE giant Royal Scot-type locomotive of the Clyde-Thames express lies on its side, behind it four steel coaches, their bogies stripped off, slewed across the tracks. This was the scene after this London-Midland Region crack express had

gone off the rails just south of Blea Moor Tunnel yesterday. Another coach, derailed, stayed upright. So did the pilot engine. The remainder of the ten coaches did not leave the track.