

INTRO to V.Bs

INTRO/PLAN/PROG/day

VERNACULAR BUILDINGS training:

Chapel le Dale area. Ingleborough Dales Landscape Project, SiS Heritage Skills,

(4 years HLF project) YEAR THREE 2018.

- ① INTRODUCTION to Broadbrake
- Aim - skills etc
- ② RISK ASSESS

Start Weesdale, Nulpsdale

① 1 WELCOME and INTRO

Welcome to Broadbrake ^{date} ^(Finney Abbey farms) ^{burk bar & HLF St - Shre,} ^{ID 2 P}

→ (a) • Part of the IDLP SiS project, aiming to provide vb training days and heritage skills. Year 3.

35. (b) • ^{I'm a freelance recorder of VBs} About me: 1982 invited to a dayschool on VBs in Ingleton (railway station community centre) Speakers were well known - Barbara Hutton ^{founder of YVBSG}, Barry Harrison ^{f2}, (founders of new YVBSG) Maurice Barley, Jean le Paturel.... I was hooked and also joined the national VAG. I helped arrange two Yorkshire conferences over the years. Hobby/interest

YVBSG? in those days you had to be pr.

1.0.c) AIM OF TODAY: Give you some of the tools or skills for recording VBs in your area or patch. We will look at recording VBs, - measuring and drawing, the vocabulary of words used (eg fortresses) observation skills. (spotting odd ones etc) ^{HERITAGE SKILLS}. ^{technical & vernac words}

old falling down?

1.0.d) • VBs are a huge historical resource and still under-used. There is still much to discover about local VBs buildings - the buildings mostly built by the yeoman and freeholders of the population (tenants not great builders as didnt have the means). Nobility built much larger mansions or stables on their estates that were different in their tastes and followed national gentry/nobility styles, not those of yeoman who built many of the buildings in villages, hamlets and towns. In Ingleton parish there are huge moorland ^{places} and hills like Wherside. Much of this land around us here, near chapel le Dale, was worked by small medieval monastic farms. ^{on large monastic estates of Finney Abbey} The remains of these buildings can still be seen although much altered over the centuries.. ^{Broadbrake is one of the 6 farms of Wintuscales of the 13th cen farm}

1.0.e) • The study of vbs is fairly recent. In 1955 WG Hoskins wrote the ^(read the source) "the making of the English landscape" And was one of the first to realise the study of VBs was important. YVBSG and VAG followed. There is still much to discover and new technologies eg dendrochronology (tree ring dating) is exciting. ^{tree-ring dating is exciting}

- Yorkshire played an important part - James Walton - A. K. Smith

1.5 • ^{Archivists} Although buildings still, ideally, need some historical research, it is not essential. The structures you find help date the buildings just as well. Today we will look at the buildings around us here at Broadbrake and how to date features. ^{structures} Tomorrow is a different day where we will measure and record a VB and then draw it up. Perhaps you have some projects in mind where youve always wanted to survey some buildings and find out more about them? There are plenty of buildings in need of some understanding. Its not just about recording a building ^{that} but its about INTERPRETATION and this often means some writing-up of your finds. ^{and conclude something.}

read the find

RISK (1.9) ^{fieldwork} RISK ASSESSMENT /health and safety (PTO) (4 pages away →) Traffic, low beams, rough ground, leave doors & windows open/closed as found, tripping hazards, being sensible & aware!!

① Welcome (PTD) ✓
Start

PROG FOR DAYS PLAN

PLAN

② PPT AND THE MANY ASPECTS OF VBS

③ WALKABOUT Looking at Broadrake (Roof) / outside of c

LUNCH ~~PTD~~ IDLP ~~PTD~~ VBS July 16. PPT (33)

④ HANDOUTS and the vocabulary of VBS: + Books

Recording in the field,

things to record,

glossary and names,

barns;

roof truss types,



village profiles

angled view
+
perspective



⑤ WALKABOUT and drawing in the ~~Winterscales / Ivoscar hamlet~~ ^{Bunsca to Ellebedh} Listed description

Look at interior Roof truss and draw

⑥ DOCUMENTS Books, useful books + De-cho ?

⑦ ppt on Measuring (IDLP 3 Recording) ?

DAY 2

Intro

PPT measuring

Aim of DAY- Divide into 3 or 4 small groups to produce plan and elevation and interpretation of Broadrake. Rachel show us round?

⑧ MEASURING UP (outside) On the job learning.

DRAWING UP (inside, hints) afternoon walkabout drawing winterscales & Ivoscar

⑨ Dendrochronology, new technology

* INVENTORIES BOOK, look at

books. 7 TYPES AND NAMES Look at books for inventories

LISTING DESCRIPTIONS to see

- ⑧* Hearth Tax
- OS maps
- Inventories
- Tithe
- Poll-tax (surnames)

Wills & inventories are useful for many historical interests. My interest is reading & interpreting vbs. That means looking at the structure & details. Inventories tell you what room was called, what was in it & how used. Today we have lounge, dining room, ^{used} bedroom, but not until recently.

Giggleswick Wills & Inventories Talk 2015

SLIDES

- 1 what are vbs? - bindings of local freeholders who built in local styles, with local materials 17/18c. Make up most of our farms & villages until 19c.
- 2 Dates and great rebuilding Late 17c date entries = rebuilding.
- 3 Harrison and Hutton invents; agri. Crops, animals - Craven comparison evidence eg livestock & arable
- 4 " No of rooms and storeys Craven has storeyed houses & 6 axis rooms
- 5 " Nos of Hearths and kitchens Kitchens in manors are not common around 1700

- 6) An example of building recording **Silsden Moor** 1530s ^{dated for new frame} tenants, scattered farms
- 7) Evidence of 16thC beginnings as all thatched, low roofs, cruck built. Some recorded in drawings and photos. Silsden moor
- 8) Crow Trees - one of the farmsteads on Silsden Moor we recorded. House and barn c.1680. End lobby entry into main room, Hb, by stack. Parlour beyond. 2 storey. Porch.
- 9) Drawn elevations crow trees - hb, old entry, pa, porch, upper rooms
- 10) Survey plan of dating Crow Trees. Barn built first (cruck), (people lived in village), house added ^{dating} c.1680 later. Then porch (status symbol for the new yeoman. 2 storey 2 room house very common.
- 11) Inventory 1694/5 - parlour, house, chamber, porch chamber and what was in it (invCROW see sheet?A)
 - ① Parlour - bed & furniture
 - ② Chamber - 2 beds, 2 chairs, cast beds, ^(frames) saddles, wheels
 - ③ Parlour chamber - bed, books, ^{Henry, John Tom} iron range, spits, backstove, iron shift belonging to fire, beef & tallow, bed & desk
 - ④ House/Hb - cupboards, tables, chairs, fireplace & cooking facilities
 - ⑤ Barn: 22 cows = 260, 7 cows = 84, 5 cows = 60, 2 cows = 20, Leathers & bales
- 12) pic of the chamber - unheated except stack from Hb below. Roof truss. Stair at side. Door into porch chamber. One of the delights of recording is finding a contemporary record of the rooms. That's how we know the room names!

- 14 SETTLE in Gigg parish - **market town 1294** and set out around a square. Urban vb little studied. ^{In contrast} Very different from rural farmsteads. Current interest. Land was expensive so houses were squeezed in by building upward. Settle has very tall houses, many 3 storey. A lot of 17thC building remains if you look for it. This one on Cheapside, near High Street, is 3 storey, mullions windows. Door at rear too. Adjoins an 18thC warehouse which probably replaced an older building. ^{Tall c 17c (gr rebuild)}
- 15 off market place/high street - 3-storey houses 17c
- 16 evidence of rebuilding - White horse, golden Lion. 17c houses rebuilt & altered

17 Map of Settle surveyed in 1847 shows buildings ^{packed} around the square with crofts behind them. Note Bishopdale Hse, White horse, Golden Lion, Royal Oak which are some 17thC houses. Marshfield house 1770s?

Picture of settle in 1830s with medieval tollbooth surviving, now the Town Hall of 1840?

18 The Folly sept 1695 – well known; a gentlemans residence of 1676 in Settle. Although its very large and rather ornate, its plan retains the tradition rooms of most yeoman houses. Three front room. Hb or bodystead is main living room and where the door is. Door enters house beside the stack. Upper end has the best parlour, lower end has service rooms such a kitchens and bread oven. This house also 3 stories high with stair case at the back to all floors. 1703-10 Wm dawson made alterations eg viewing tower and taking-in door at N end. Weaving? *See next page* →

The plan ; I had the job of recording it some years ago with AP.

19 Naked Man cafe. 17thc house. sept 1690 Nice doorway (moved) and John Cookson date –one of the few we can match an **inventory to**. Two storey, 3 bays +kitchen; private house that was using floor space for sleeping places in busy town. Not an inn or tavern or alehouse?

Red chsmbe ; chamber over house; old chambers (SCAD) +rear kitchen
High Parl; bodystead; low parlour (SCAD)
Servise rooms/celler

21 WHITE HORSE rebuild in 18thC but there in 1690s. Inventory of **COOKson/Lawson** (who had been one of the listers of The Folly?)

22 blocked windows and porch

23 white horse 18thC warehouse

AVD - hanson 1728

24 ROYL OAK 2 rooms and two storeys date 1686 **wm hall**

25 royal oak blocked openings

27 goldenlion t carr

28 Talbot

29 Bishopdale **hargreavess**

30 single storey craftsmen?

31 Rural 2 storeys v common eg settle green a few

32 Swainstead s carr

33 fireplace

34 green fam and porch bankes

35 Beck hall porch now rebuilt iii

36 stackhouse brown

37 fawber wil;kinson

38 old house

39 new house

40 marshfield mrs lister

41 ? Conclusion?

INVENTS

11. Crow trees

1676 RLP.
18 Folly r preston. (=White horse)

Inventory 18 when R Preston died in 16 95 gave some surprises. Gone downhill..

"Goods standing in The White Horse" "white horse and certain parcels of lease lands, mortgagues - £700.

HALL chairs and tables. S PARL - bedstocks, old bed, bedding.

Some N PARL - meale, beans, ark, plough shares, harrow and rakes ie farm stuff. Spinning wheel.

Rear KITCHEN- spoons, plates, pots and pans, cooking items- spits, jacks, bakestone, BREWHOUSE - brewing items Back yard? CELLAR, MILKHOUSE

UPSTAIRES, HALL CHAMBER- bedstocks, bedding, chests, ark.

PARLOUR CHAMBER- cupboards, chest, farm items - axel trees

LINEN quantities in passage. TOP FLOORS not mentioned as cleared?

BARNs elsewhere turf, 21 cows/oxen, 14 sheep, 5 horses (more value than house at £88 plus)

20 John cookson /naked man. Datestone allows us to identify the building, now much altrered. The 17thC door moved when became a shop? Datestone too. Died in winter dec 1690. Hugh hall, john skirrow Wm hall and john Wildman were appointed to make inventory of all his ggods. Tghey visited the two barns where tools were stored eg saddles. Old

Invent 1695 Plan

could be house

3 stn 1st

Service

FARM

Service

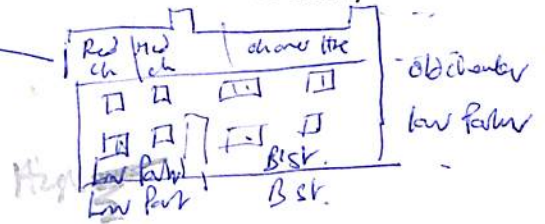
FARMER

Difficult to link other buildings to owners

cheesepresses and turf carts and stored turf fuel. He had 19 cattle, 6 horses, 67 sheep and lambs. Worth £53. They went through his house starting on the top floor; red chamber (upper end, red curtains, 4 beds, tables and chairs cheeses and yarn) (27 beds in all in building), middle chamber (furniture). chamber over the house (oats, meal, arks, spinning wheel, more beds), old chambers (more beds), kitchen loft (add on at rear?). Then down the stairs and to low parlour (5 beds, wool), higher parlour (4 beds); bodystead or main room (plates, pots and pans, cooking items, making cheese, butter and brewing). The service rooms (buttery and cellar also visited) (spinning wheel, yarn, wool suggest some spinning as extra income.)

The contents are interesting but the room names tell us it was a two storey building with 4 upper rooms and bodystead, L and U parlours. What is now missing is the low parlour and old chamber which is now the scad shop. Look how its roof engulfs the chimney and end of NM roof. It has clearly been joined to it at some time.

can see example of lines & entries



- UP** Red chamber - 4 beds, red curtain - cheeses, yarn
- Chamber over house - bed, bedding, ark meal spinning wheel
- Old chambers = 6 beds, arks
- Kitchen loft - 7 beds

Downstairs - service rooms - cellar with cask for ale, buttery, - cheesepress and turf in barn.

Bodystead/living - tables, chairs, fireplace, pots and pans, plates, drinking vessels; backstone, dairy and brewing implements eg churn and cheesevats.

Kitchen not for cooking

High parlour - 4 beds, curtains, chairs

Low parlour SCAD - 5 beds, bolsters/rugs, blankets etc, chairs, wool (for spinning?)

Alehouse or just lodgings

20 Datestone 1661C (John Cookson) and rear of premises.

What inventory says of house sept 1690

2 barns. 19 cattle, 7 horses, 67 sheep = £53

House - 27 beds + rugs. Blankets etc. CONCL: His house being used as sleeping places

NOT FEAR WHITE HORSE - 3 inventories - Preston, Cookson, Lawson

Not far away is another house that can be connected to the Cooksons//

Rob Cookson July 1702/probably WHITE HORSE, same then

3 storey, 3 bay house 3 st porch.

Sun chamber 6 beds, bedding

+ 2 high chambers (over hb and p.) + high porch ch

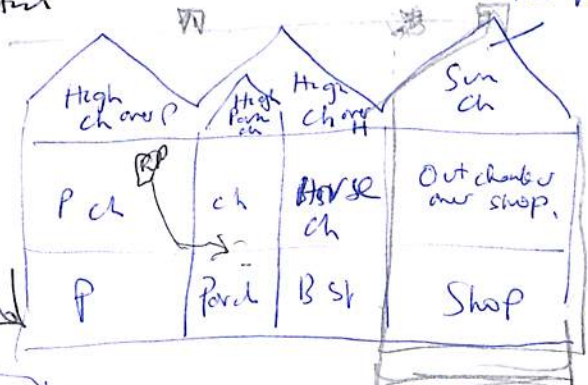
CHAMBER OVER SHOP; p.ch. Huse ch, p ch;

(Staircase)

Bst, p, shop

outbuildings

STABLE & BARN



as at White Horse
red curtains
red rug

White horse Lawson March 1728

Large impressive house on hill

3 storey, 3 bay length, and 3 storey porch. Includes a shop and sun parlour/solar

Datestone 1671 R & L.P. - Preston died 1695

Same but garden & cart behind

20 casks of ale - cellar so alehouse?

Add me

Garden abd croft behind. Stable and barn
Datestone on wall richard L preston 1671 (pre folly). Prestons own invent describes his goods at White Horse in 1690s. This does fit the WH inn (which survived into 19? C.)

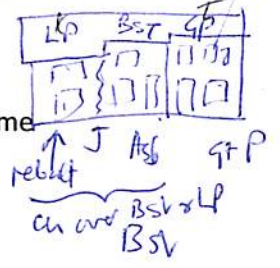
pic - Look at stonework - 3 storeys bl wndows.
Where is porch? Gap bet 2 shoopd. Chimnr to l for stack. garrets have beds and bedding, arks of beans abd oats. Mid floor beds and bedding over shop, p house.

Ground floor p. House, shop. Garden crofts
- tower garry store 8 17c chm

1686
RMB

3 bay, 2 story house (1686 RMB)
24 Royal oak (king Charles?) William Hall of settle. aug 1707 Plan fits. "Wm Hall in hets son's voy ch
A lot of alehouses were private houses that sold refreshments. 3 bay and 3 storey.

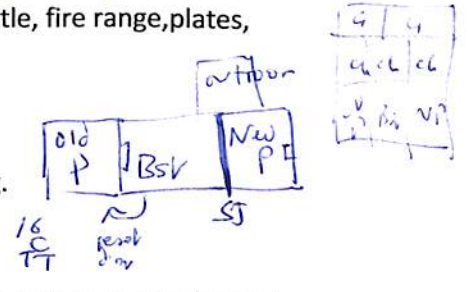
50 cattle; 5 horses; 70 sheep, pig.
Inventory not detailed but must have barns. Reason for royal oak is map of 1765 has his name there. it does fit. Bst, p, littlr pie 3 bays;; 3 chambers above these one for HB/P and Gt P..
Structure datestone RMB 1686 walling joints



INVENT
27 golden lion tom carr butcher july 1718

-3 bay, 5 storey (2 garrets) Beds!

- 1 New p-st joint- fire, 3 beds, bedding, clock; 2 bst/house- table, chairs, settle, fire range, plates, cooking things, tankards, chamber pots.
- 2 old Parlour- 2 beds bedding; 3 outroom with 18 pictures, chas cushions.
- 1st floor- new chamber 12 pictures, tables, fu beddingniture, beds.
Bst ch -3 beds; old parl ch- 4 beds;; outroome chamber -bedding.
- 2 garret rooms- High garrets- beds, bedding, arks of grain, fire grate;;
- Concl: 6 fireplaces in all. Coals and turf. 11 rooms, 3 storey.
- Celler has 189 galls ale, also wine and brandy. This is a TAVERN for wealthier not alehouse thoslept on floor still?



1671
TT

Beds
Pictures
11 rooms
6 fireplaces
Celler

NOT an alehouse

- Draper: 29 bishopdale, tall house, 3 st, no porch, separate shop,
Matches dec 1686 settle draper john Hargreaves.
barn?(below?) carts stable horses, Turfs as fuel.
3 upper chambers with beds, also saddles.
Floor 2 - ch over house; ch over P (next room is shop+door?)
Gd floor- P, BST plus services- celler/milkhouse/buttery.
P has 2 beds, chairs, table, carpet, looking glass, 26 lea yarn.
Bst - pots pans, cooking, dishes, spits.



11 new
Kis sep, fustian
baize
serge
silk
Clasps
fustamp
lace
whalebone

30 Single story craftsmen OMIT

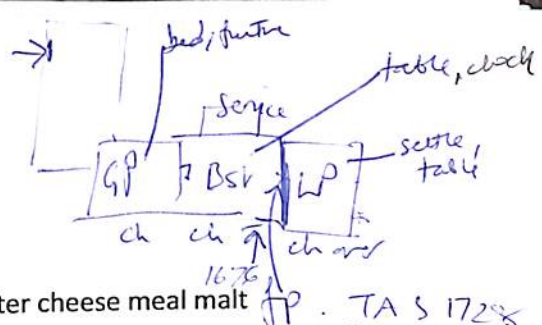
31 Rural 2up/down - Lakeland, hwmmingway, brown; baves settle green. Higson, Watkinson,
James Baynes of settle. March 1719- heifer and pig. Rooms- bst, p./ 2 ch./service (cheese brewing cooking)-cellar brewhse. List of all the drapery items - pages of items in the shop. eg whalebone, lace ribbon, cloth, firefuelC

Prual furs, difficult to walk nature to fustand.
17c hood nodd

6199

1129

2 storey, 3 bay



Brown (Stainforth)

from Redwell CAP
 32 Swainstead Stephen carr. dec 1725 so stored foods beef bacon butter cheese meal malt

Value of animals over £200=46 cattle, 7 horses, 110 sheep

Bst, gt p with bed, lowp-table, settle; 3 chambers over with beds.
 2 farms? Hse 1676 Fireplace 1728 TS (tom settle monastic) stored goods wool

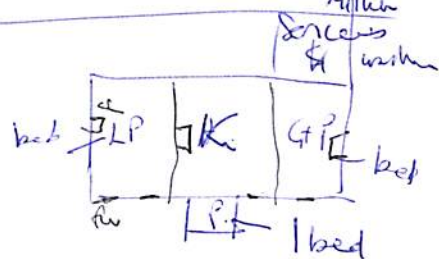
TA S 1728
 (did some more in Jan etc he of the)

34 Green farm (1689), Wm banks sept 1710

15 cows and 15 s (£48) everything else £32.

Kitchen- pewter, brss. Clock. chairs (dining/hb going out?)
 Gt P. Little P have beds; 4 chambers upstairs -K, P, P, Pch. No Bst??

3 bay, 2 storey
 simple



35 Beck hall, Thomas Wilson, gent, April 1719

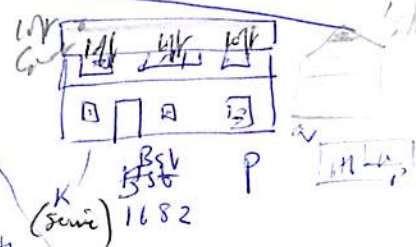
Similar to green as no bstead. 4 chambers inc porch chamber, all now rebuilt c 1800 no porch

36 Stackhouse. 1682 house now Browns croft? Henry brown may 1731

27 cows, 5 horse, 42 sheep, nearly £150
 bst, p, kitchen; loft over p and bst, new loft Garret, so squeezed under roof.
 Big value bedding and linen

bedroom
 2 17/6
 Pch - 1/6
 bst

2 up 2 down

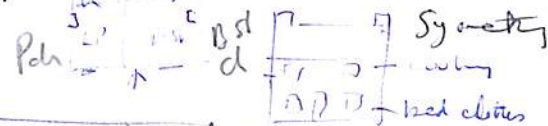


39 Fawber, (new house) Wilkinson dec 1746

20 cows - some at top farm, 96 sheep, hay in three named barns.
 Bst, Little P with bedding, buttery and kitchen (sep by stair);
 2 chambers over

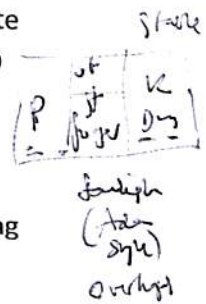
Jones (feat)

2 up 2 down
 2 horses



40 Mary Lister Feb 1766. Marshfield built 1750s. burnt 1790s? Georgian gentleman's residence in gardens. Associated with Lister family of Gisburn Park and Parkers of Browsholme Hall.

End of vernacular houses, national style. Rooms we would recognise, PARLOUR with blue and white china, mahogant tables and UPSTAIRS Mrs Listers room (jewellery, stockings, bed, fire tools? RED ROOM with bed. ROOM OVER PARLOUR walnut chairs, blue damask bedd curtain and bed, mrs Listers gowns, seeing glass, glass fixed to wall. WHITE ROOM - bedd and white hangings. Lots of service rooms (eg room over celler, cellar, back cellar, win@ cupbords, passage, dark garret, corn chamber, kitchen) chairs tables clock crockery pewter firetools gun and bayonet, iron crane, frying pan, backstone, pantry with pots and dishes, Still has a brewhouse. (pre Act 1850's?) 7 snare ions



CONCL

Using turf/peat fuel. Room names chose little
 Weather people into use to leave make will?
 A lot of bedding to put up windows to settle
 Inventories give us a whole new aspect on records v. b's

flex on the boxes

classical
 conygrues
 Villa plan

7 SEMIO

Scraper

*intracable = stony, varied per/ant
Had, a-pink, marine, lumpy, ragged, craggy,
washed, irregular, distant*

Vernacular Building Materials

Alison C. Armstrong

there is a waste of design & customer (no cap)

Vernacular buildings are generally defined as the houses and other buildings of ordinary people, built largely from local materials, ~~without professional assistance~~, prior to the 19th-century industrialisation of building processes. North Yorkshire's vernacular buildings mostly date from the late-17th and 18th-century, when many thousands of houses and barns were built or rebuilt using stone, brick and tile in preference to the timber framing, crucks and thatch of earlier centuries.¹ For economic reasons stone was usually obtained nearby, and bricks were made from local deposits, varying in colour and texture according to the properties of the clay. The outward appearance of buildings is thus intimately related to local geology and soils. The uplands of the stone-rich Pennines and North York Moors are characterised by sturdy stone-walled structures, while in the lowland Vales the Ice-Age deposits yield only stone cobbles, and clays suitable for soft-hued brick and tile. Similarly sandstone 'grey slates' predominate in the Pennines, while to the east red pantiled roofs are conspicuous. The impact of vernacular buildings on the landscape, both as a visible presence, and through changes wrought by the winning of building materials, is considerable.

unradi

(grey V fabric on)

Geology does not translate straight forwardly into building materials, but is complicated by practical and economic considerations. Stones have differing properties of strength, tractability and durability. On the North York Moors, for example, the Jurassic sandstone does not yield fissile stone suitable for roofing, and stone walls are topped instead by pantiled roofs. Soft stones (like chalk) or intractable stones (such as the limestones of Craven and the Dales) are seldom used far from their origin, whereas good freestone justified higher transport costs.² In Conistone, Wharfedale, a substantial yeoman house and barns, built c1686, had rubble walls of limestone, probably extracted from surrounding pastures. Sandstone, required for dressed work such as mullions and quoins, came from the township quarry high on the hill behind; roofing flags were brought from hilltop quarries seven miles away, while roof timber was chosen from woods twelve miles distant.

not as much change/impact as early. Large quantities & includes

irregularly dressed

2) of hard limestone - rough & crumbly (P. 100) quote

Yorkshire's oldest rocks include green Ingleton slates and dark grey Horton-in-Ribblesdale flags used for roofs, floors and 'boskins' (partitions in cow shippens) in the west of the county. In the upper Pennine Dales, pale grey Carboniferous limestone forms poorly coursed rubble walls, often with projecting through-stones and brown sandstone dressings, which may be elaborately moulded. Exceptionally, around Langcliffe, the limestone breaks square enough for lintels. Traces of whitewash and 'slobbered' render clinging to rubble walls in Ribblesdale and Wensleydale suggest that this was once a typical finish. Fossil limestone 'marbles' were used for fireplaces in Dentdale and Nidderdale (both dark grey) and in Swaledale (buff-coloured).

Redd

Lst

Redd

Thin sandstones occur at the top of the limestone, especially north of Wensleydale where Castle Bolton (14th century) stands below a ledge of quarried sandstone. West of Grinton, Swaledale, houses of c1800 are entirely made of regular blocks of hard, golden gannister sandstone. Further south, at High Bradley, near Skipton, structures before the late-17th century are of gritstone blocks worked from crag outcrops on the moorland common. By the 18th century flagstones which required less dressing, quarried under the old arable lands and above a worked-but coal seam, were being exploited for split quoins and thin wall-stones, making later buildings distinct. Bradley flags provided a rare source of

Mcg

rather a lot of use

out of bed (red) (blue) (white) (brown)

charities - donate cover ground

coppices, but imported Baltic softwoods gradually became the norm for floor, and later roof timbers.³

Thatch

Thatch made from heather, or straw 'reeds', is now rare,⁴ but many more buildings in the county preserve evidence in their gables for the steeply pitched thatched roofs that preceded flags or pantiles.⁵ Compacted layers of old thatch, to which the new was regularly added, are a rich potential source of botanical archaeology.

FURTHER READING

Alison C Armstrong. 'Stone, stone-working and vernacular buildings', *Yorkshire Vernacular Buildings Study Group Newsletter*, 18 (1990).

Barbara Hutton & Barrie Harrison. *Vernacular Houses in North Yorkshire and Cleveland* (Edinburgh: John Donald, 1984).

Joan Ingleby & Marie Hartley. *Life and Tradition in the Yorkshire Dales* (Clapham: Dalesman Books, 1989).

Joan Ingleby & Marie Hartley. *Life and Tradition in the Moorlands of North-East Yorkshire* (Otley: Smith Settle, 1990).

Arthur Raistrick. *Buildings of the Yorkshire Dales*, (Clapham: Dalesman, 1989)

RCHME. *Houses of the North York Moors* (London: HMSO, 1987)

Yorkshire Vernacular Buildings Study Group. *Yorkshire Buildings and YVBSG Newsletter* (printed annually; summaries from the Group's archives of buildings recorded; subscription details from the Group Secretary).

¹ The phrase 'Great Rebuilding' was coined by W G Hoskins to describe this phenomenon, which occurs at different times in different parts of England. See his 'The rebuilding of rural England, 1570-1640', *Past and Present*, 4 (1953), 44-89. The concept of a 'Great Rebuilding' has been much debated. For a local perspective, see Barbara Hutton, 'Rebuilding in Yorkshire: The Evidence of Inscribed Dates', *Vernacular Architecture*, VIII (1977), 819-24.

² For reasons of economy, materials were often recycled. A stone laithe dated 1735 at Burnsall, Wharfedale, has cruck timbers re-used as purlins, and documents tell of dismantling, re-using old stone and timber, and new mason's work. *of local sandstone*

³ The Conistone house of c1686, mentioned earlier, had a floor of oak and 'firdcals'. Plans for a new field barn at Grinton, Swaledale, in 1820, specify Memel (i.e. Baltic) timber for the roof. *X ref.*

⁴ Spout House, Bilsdale, is a surviving example maintained by the North York Moors National Park Authority.

⁵ For example, cruck barns at Burnsall still have traces of heather thatch over steep, close-set rafters, though the sandstone flags which covered the eaves, and the sods which covered the gables and ridge, have gone.

Stories: Stone

WELCOME - old landscape
FUNDING - Skills of HLF - Heritage Skills
MY INTEREST
AIM FOR TODAY - still discover recent study
RISK ASSESS
activity inside & out
Tomorrow real meaning

BROAD RAKE BANKBARN, VB TRAINING 10,11th Sept 2018

1 INTRO

Welcome to Broadrake in Philpindale/ Weasedale (old names) - A landscape of farms worked by FARMERS
Furness abbey in medieval times until the Dissolution. Probably the sites of the present farms, including this one

FUNDING
IDLPS
Skills
part of IDLP
& HLF funded

a) First - About the project today - ; "Stories in Stone" project is part of the large IDLP (Ing Dales Lancsp Partnership) and funded by Heritage Lottery Fund. This part is about heritage skills and training. This is now in year 3.

FUNDING

b) About me... Always interested in old buildings (family holidays) About 1982 - Study day on VBs at Ingleton. I was invited to go and I was hooked. Speakers were Barbara Hutton who was lecturing all over Yorks) Barry Harrison, Maurice Barley, Jean le Pat, .. I joined YVBSG and national VAG (in days when you were proposed (seconded?) for membership) (Arnold Pacey)

ME

in a freelance recorder of VBs

YVBSG
VAC

Mentionable regarding weekends (Dormitons Abbey, Sunkledale 1970s (my 19/20s))

c) Aim of today - to give you the know how and tools to record VBs

AIMS

d) *there is still much to discover about VBs through fieldwork- not much published.

e) *A relatively recent study so lots no one else has looked at.

f) Broadvale rush - look at this here & back

g) *RISK ASSESSMENT done; (much is common sense; - permission, beware of traffic, low beams; rough ground, using ladders; taking photos..)

2. VARIOUS RECORDING MEANS used for these training days to cover a range of study;

Outdoor, indoor, ppt slides, practical experience of measuring and drawing up, limited but useful. range of printed material on the subject (examples Hearth Tax, inventories etc)). Need to publish more. (Local interest the way forward?) Move interpretation not just more records.

3. DAY 2, for those who booked, will have more on drawing-up, scale, doing a real measured building survey. Learning on the job. (as at Auswick, Aophen)

INTRO
PPT Measuring
Looking
Measuring
Handouts
Walk to view
Whitescles

HOW?

4. THE PROGRAMME: Today: -

Indoor & Outdoor training
Look at examples of building

- 1. Welcome/Intro (above)
- 2. introductory lecture power point
- TEA? to fill in!
- 3. ROOF; drawing and naming parts
- LUNCH? to fill in!
- 4. A look at the HANDOUTS
- 5. Walkabout to see Bruntscar, Hodge Hole, Ellerbeck and some field barns. (Possibly Winterscales and Ivescar if time) & sketch.
- 6. Dendrochronology
- 7. Documents and useful books

END