

STONE WALL STYLES IN BUILDINGS

Walling styles depend on the type of stone used and the skill or requirements of the builder. Some stone was quarried. Other stone sources were field cobbles and boulders.

Look at the pictures

Can you see^a stone that is well-coursed?

- stone that is poorly-coursed?
- stone that is uncoursed?



STONE WALL STYLES IN BUILDINGS

Walling styles depend on the type of stone used and the skill or requirements of the builder. Some stone was quarried. Other stone sources were field cobbles and boulders.

Look at the pictures

Can you see^a stone that is well-coursed?

- stone that is poorly-coursed?
- stone that is uncoursed?



STONE WALL STYLES IN BUILDINGS

Walling styles depend on the type of stone used and the skill or requirements of the builder. Some stone was quarried. Other stone sources were field cobbles and boulders.

Look at the pictures

Can you see stone that is well-coursed?

- stone that is poorly-coursed?
- stone that is uncoursed?



STONE WALL STYLES IN BUILDINGS

Walling styles depend on the type of stone used and the skill or requirements of the builder. Some stone was quarried. Other stone sources were field cobbles and boulders.

Look at the pictures

Can you see^a stone that is well-coursed?

- stone that is poorly-coursed?
- stone that is uncoursed?



STONE WALL STYLES IN BUILDINGS

Walling styles depend on the type of stone used and the skill or requirements of the builder. Some stone was quarried. Other stone sources were field cobbles and boulders.

Look at the pictures

Can you see stone that is well-coursed?

- Stone that is poorly-coursed?
- Stone that is uncoursed?

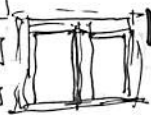


WINDOW AND DOOR STYLES AND DATES



1705

Deep chamfered mullions in windows.
Doorways: large lintel, often ornamented, composite jambs with wide chamfer. Molded copings & kneels.



1719

Windows become larger. Mullions are flat on outside.
Doors still with large lintel and composite jamb.



c.1710

Windows with flat surrounds and cross-mullions.
Doors with flat moldings. Molded kneels & copings.



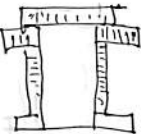
1740

Flat-faced mullions but splayed inside.
Lintel of door may be classical with rustication, flat moldings. Classical expressed quoins and flat band. Molded kneels on roof. Increasing symmetry.



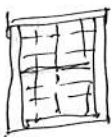
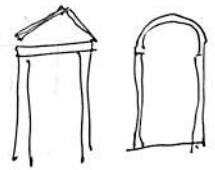
1784

Windows still mullioned in stone-surround.
Doors sometimes heavy classical with plinth block and impost block. Narrow chamfers to door



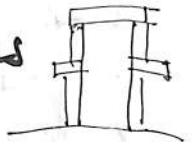
1791

Windows bigger with square mullions.
Expressed quoins "classical".
Door pediments in classical style.
Watershot walling often.



1837

Sash windows, often 12-pane glass. Stone surrounds.
Plain stone-surround door with binder stones



WINDOW AND DOOR STYLES AND DATES



1705

Deep chamfered mullions in windows.
Doorways: large lintel, often ornamented, composite jambs with wide chamfer. Molded copings & kneels.



1719

Windows become larger. Mullions are flat on outside.
Doors still with large lintel and composite jambs.



c.1710

Windows with flat surrounds and cross-mullions.
Doors with flat mouldings. Molded kneels & copings.



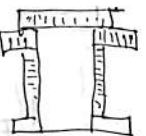
1740

Flat-faced mullions but splayed inside.
Lintel of door may be classical with rustication, flat mouldings. Classical expressed quoins and flat band. Molded kneels on roof. Increasing symmetry.



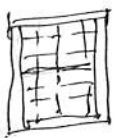
1784

Windows still mullioned in stone-surround.
Doors sometimes heavy classical with plinth block and impost block. Narrow chamfers to door



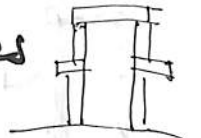
1791

Windows bigger with square mullions.
Expressed quoins "classical".
Door pediments in classical style.
Water-shot walling often.



1837

Sash windows, often 12-pane glass. Stone surrounds.
Plain stone-surround door with binder stones



WINDOW AND DOOR STYLES AND DATES



1705 Deep chamfered mullions in windows.
Doorways: large lintel, often ornamented, composite jambs with wide chamfer. Molded copings & kneelers.



1719 Windows become larger. Mullions are flat on outside. Doors still with large lintel and composite jambs.



c.1710 Windows with flat surrounds and cross-mullions. Doors with flat mouldings. Molded kneelers & copings.

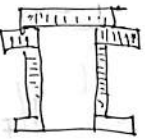
1740

Flat-faced mullions but splayed inside. Lintel of door may be classical with rustication, flat mouldings. Classical expressed quoins and flat band. Molded kneeler on roof. Increasing symmetry.



1784

Windows still mullioned in stone-surround. Doors sometimes heavy classical with pink block and impost block. Narrow chamfers to door



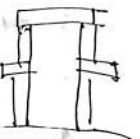
1791

Windows bigger with square mullions. Expressed quoins "classical". Door pediments in classical style. Watershot walling often.



1837

Sash windows, often 12-pane glass. Stone surrounds. Plain stone-surround door with binder stones



WINDOW AND DOOR STYLES AND DATES



1705 Deep chamfered mullions in windows.
Doorways: large lintel, often ornamented, composite jambs with wide chamfer. Molded copings & kneekers.



1719 Windows become larger. Mullions are flat on outside. Doors still with large lintel and composite jambs.



c.1710 Windows with flat surrounds and cross-mullions. Doors with flat mouldings. Molded kneekers & copings.

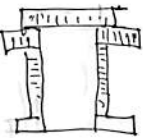
1740

Flat-faced mullions but splayed inside. Lintel of door may be classical with rustication, flat mouldings. Classical expressed quoins and flat band. Molded kneekers on roof. Increasing symmetry.



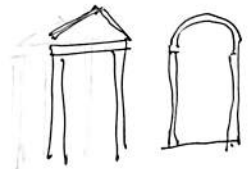
1784

Windows still mullioned in stone-surround. Doors sometimes heavy classical with plinth block and impost block. Narrow chamfers to door



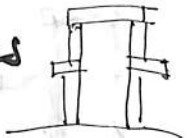
1791

Windows bigger with square mullions. Expressed quoins "classical". Door pediments in classical style. Watershot walling often.



1837

Sash windows, often 12-pane glass. Stone surrounds. Plain stone-surround door with binder stones



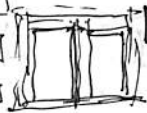
WINDOW AND DOOR STYLES AND DATES



1705

Deep chamfered mullions in windows.

Doorways: large lintel, often ornamented, composite jambs with wide chamfer. Molded copings & kneekers.



1719

Windows become larger. Mullions are flat on outside.

Doors still with large lintel and composite jambs.



c.1710

Windows with flat surrounds and cross-mullions.

Doors with flat mouldings. Molded kneekers & copings.



1740

Flat-faced mullions but splayed inside

Lintel of door may be classical with rustication, flat mouldings. Classical expressed quoins and flat band. Molded kneekers on roof. Increasing symmetry.



1784

Windows still mullioned in stone-surround.

Doors sometimes heavy classical with plinth block and impost block. Narrow chamfers to door



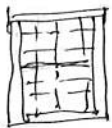
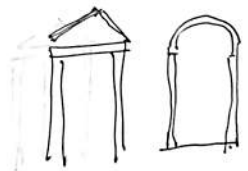
1791

Windows bigger with square mullions.

Expressed quoins "classical".

Door pediments in classical style

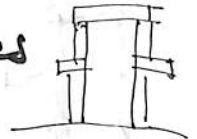
Watershot walling often.



1837

Sash windows, often 12-pane glass. Stone surrounds.

Plain stone-surround door with binder stones

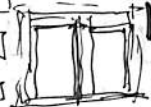


WINDOW AND DOOR STYLES AND DATES



1705

Deep chamfered mullions in windows.
Doorways: large lintel, often ornamented, composite jambs with wide chamfer. Molded copings & kneekers.



1719

Windows become larger. Mullions are flat on outside. Doors still with large lintel and composite jambs.



c.1710

Windows with flat surrounds and cross-mullions. Doors with flat mouldings. Molded kneekers & copings.

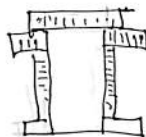
1740

Flat-faced mullions but splayed inside. Lintel of door may be classical with rustication, flat mouldings. Classical expressed quoins and flat band. Molded kneekers on roof. Increasing symmetry.



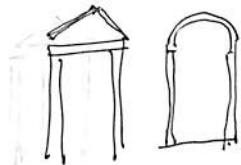
1784

Windows still mullioned in stone-surround. Doors sometimes heavy classical with plinth block and impost block. Narrow chamfers to door



1791

Windows bigger with square mullions. Expressed quoins "classical". Door pediments in classical style. Watershot walling often.



1837

Sash windows, often 12-pane glass. Stone surrounds. Plain stone-surround door with binder stones

