

Figure 15. Bretton Hall. 1. House; 2. Bella Vista.

WEA TRIP: 11 June Guide:
 9.30 Bretton Hall PETER THORNBORROW

12.30 Gunthwaite
 GUNTHWAITE HALL BARN : SE 238 066

magnificent eleven bay aisled barn, now divided into two separate barns (serving separate farms) by a stone partition wall. The roof has king-post trusses with raking struts. The lower part of the aisle walls are now of stone, and may always have been, below a series of panels of diagonal stud-work, alternating in direction and giving a herringbone pattern to the wall. There are two sets of threshing doors on the south side of the barn, and small doors as well, some of these having ogee-arched heads. The interior of the barn, which is thought to be of 16th century date, may be inspected with permission.

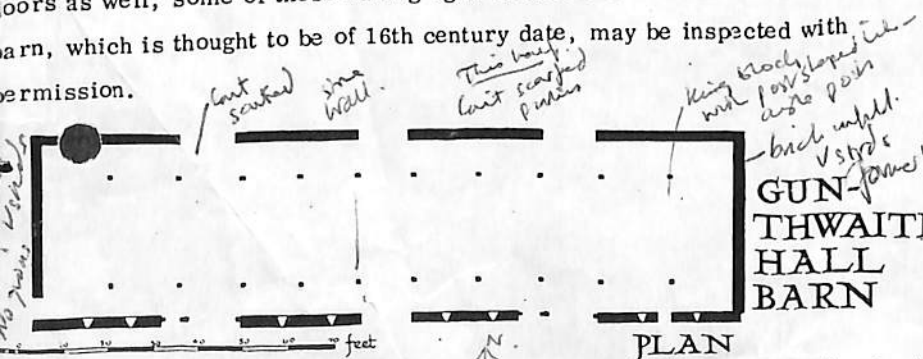
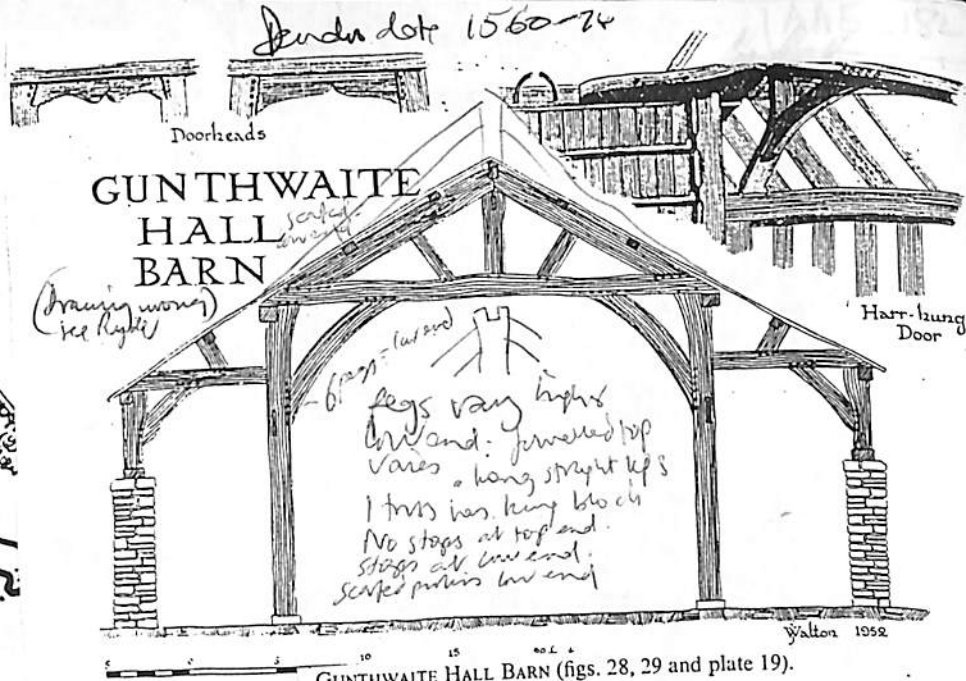


Fig. 29 Plan and elevations of Gunthwaite Hall Barn



GUNTHWAITE HALL BARN (figs. 28, 29 and plate 19).

The barn at Gunthwaite Hall is the finest timbered barn in our district, having retained almost all its original features. It is a rectangular structure with ten king-post trusses dividing it into eleven bays, the trusses being similar to those of Dives House barn, eleven bays, the trusses being similar to those of Dives House barn, having a central king-post, a pair of struts and curved braces stretching from the principals to the tie-beam (figs. 28). The outshut roofs are carried on horizontal beams, mortised into the principals at one end and resting on the wall-posts and wall-plates at the other. From these beams sloping struts carry the lower purlins.

The present wall is of stone up to breastsumer height, the breastsumer itself resting on the stone wall and serving as a sill. The studding on the north side is of the normal post-and-pan type whilst that on the south side is herring-bone pattern (fig. 29).

Of particular interest are the doors at Gunthwaite Hall barn. There are three sets of large bar doors; adjoining two of which are smaller entrance doors. As at Dives House barn and Green-hill Bank barn the heavy doors are harr-hung; that is to say, the hanging-stile, or "harr-stile", has projections at the upper and lower ends. The lower projection which is iron shod, pivots in a hole in the stone threshold; the longer upper projection passes through a hole in a stout oak bracket (fig. 28). Harr-hung doors, according to Sir Leonard Woolley, have been found in the Near East dating as far back as 4000 B.C. and they have a wide distribution. In Britain they are much more common in the Highland zone than elsewhere and in our district field gates are often hung in this manner.

The smaller doorways have flat ogee lintels mortised into stout oak door-posts (fig. 28) whilst one is also notched (plate 19). An almost identical doorway at Little Moreton Hall, Cheshire, is ascribed by Aymer Vallance to not later than the very beginning of the sixteenth century, and those at Gunthwaite Hall barn probably belong to the same period.

13.15 Lunch - The Grange
 Upper Denby

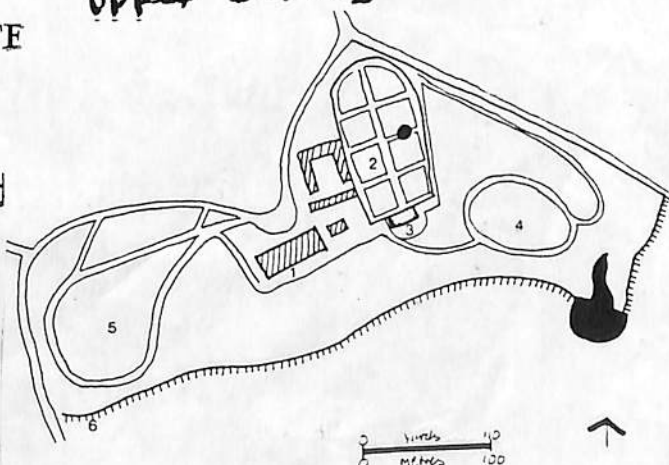


Figure 38. Cannon Hall. 1. House; 2. Kitchen Garden; 3. Pincery; 4. Flower Garden and Shrubbery; 5. Pheasantry; 6. Ha-ha.

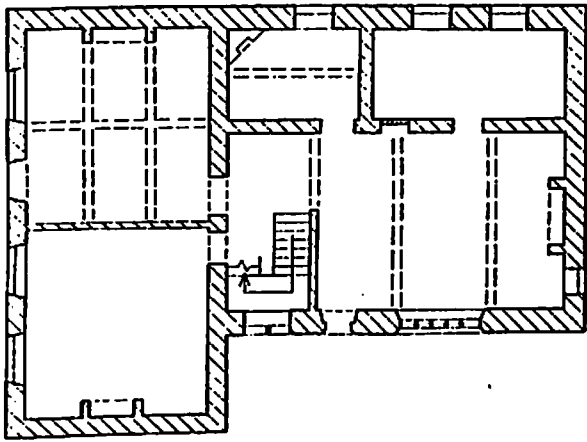
14.30 - 16.30 Cannon Hall

16. 2 builds (see Ryde)

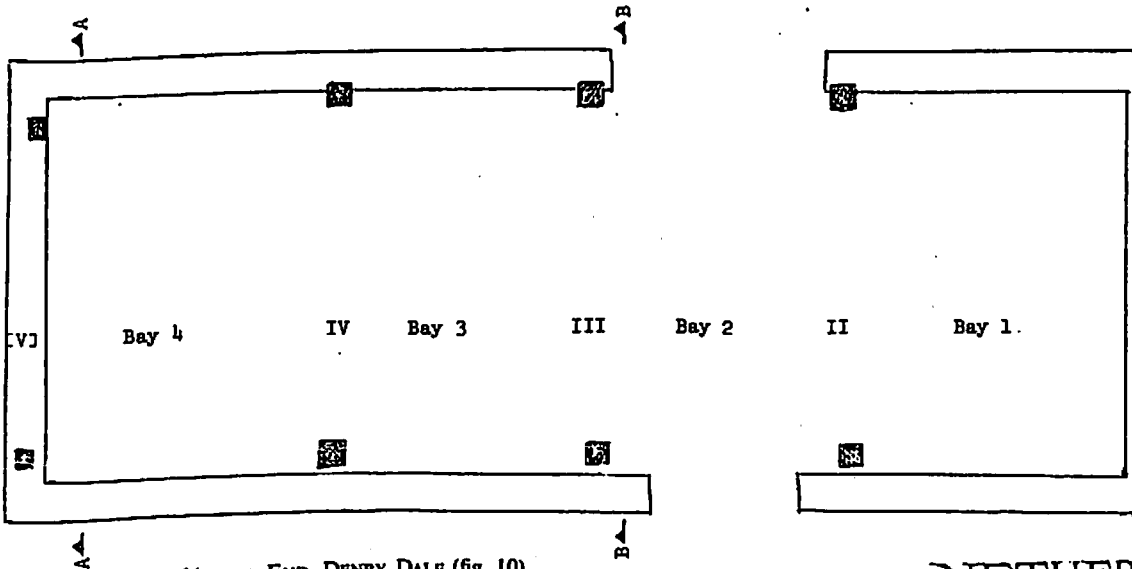
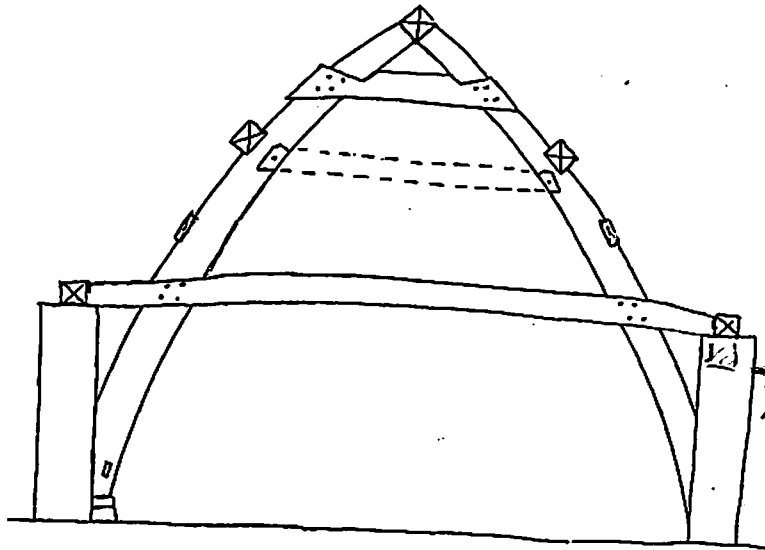
15 chambery window being 4 posts on sides but

16-45 Nether End, Denby

BARN AT NETHEREND FARM, DENBY



BARN AT NETHEREND FARM, DENBY



NETHER END, DENBY DALE (fig. 10).

The building at Nether End Farm, now used as a mistal, is a simple rectangular structure of four bays with four cruck trusses. One gable, as so often happens, has no truss. Whether this was due to the fact that one gable truss decayed or whether another bay was added when the stone wall was built it is impossible to determine. The cruck trusses themselves have extended tie-beams carrying the wall-plates and two collar-beams, the upper collar being notched in a manner similar to the one at Dean Head. Three holes underneath the collar-beam, provided to take the upright rods of the wattle walling as at Far Field Head, afford the only evidence of the nature of the early walling. The present stone walls were built in 1663, assuming that the date on the gable is the date when the change took place.

North

17-15-45 Wheatley Hill, Scisset

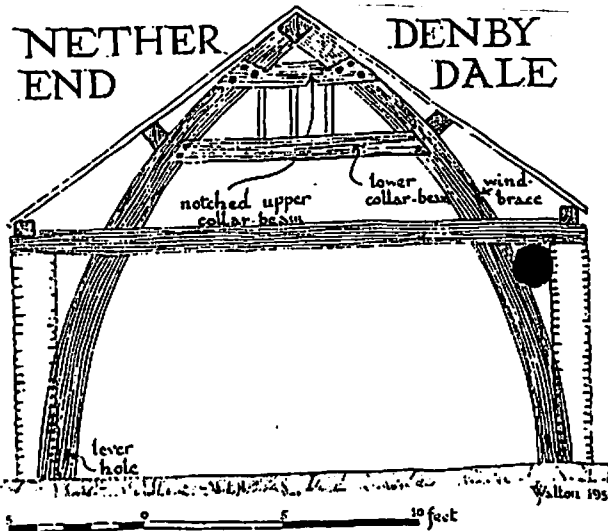
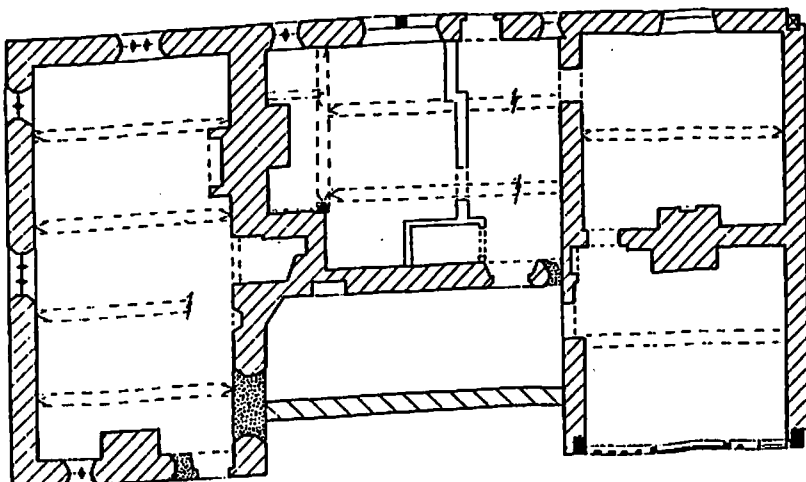
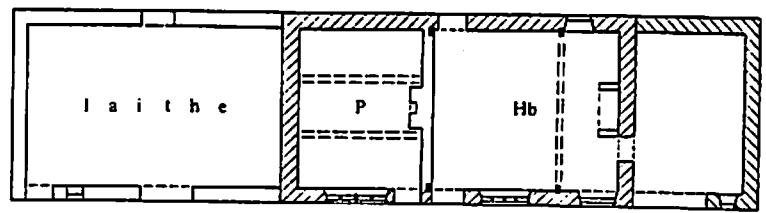


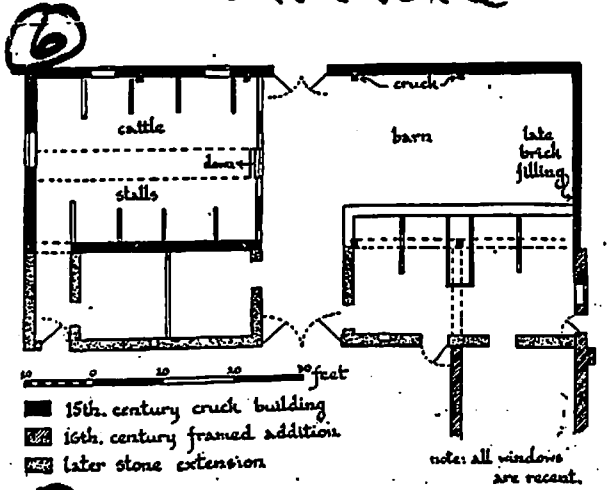
Fig. 10
Cruck truss at Nether End, Denby Dale

Arrive Halifax
approx 18.30

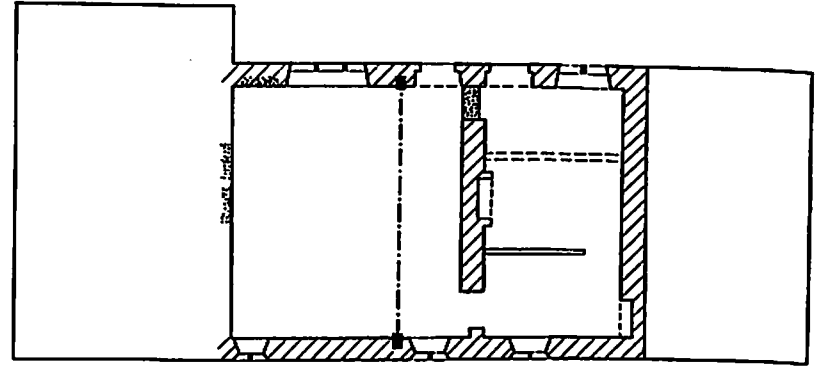
④ Birks, Slaithwaite



⑤ Old Hall, Slaithwaite



Plan and cruck truss of Thorpe House

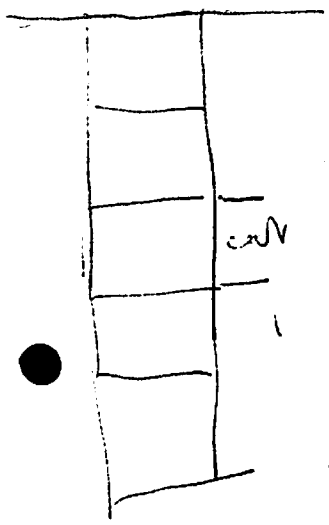


⑥ Thorpe House Farm Barn Almondbury

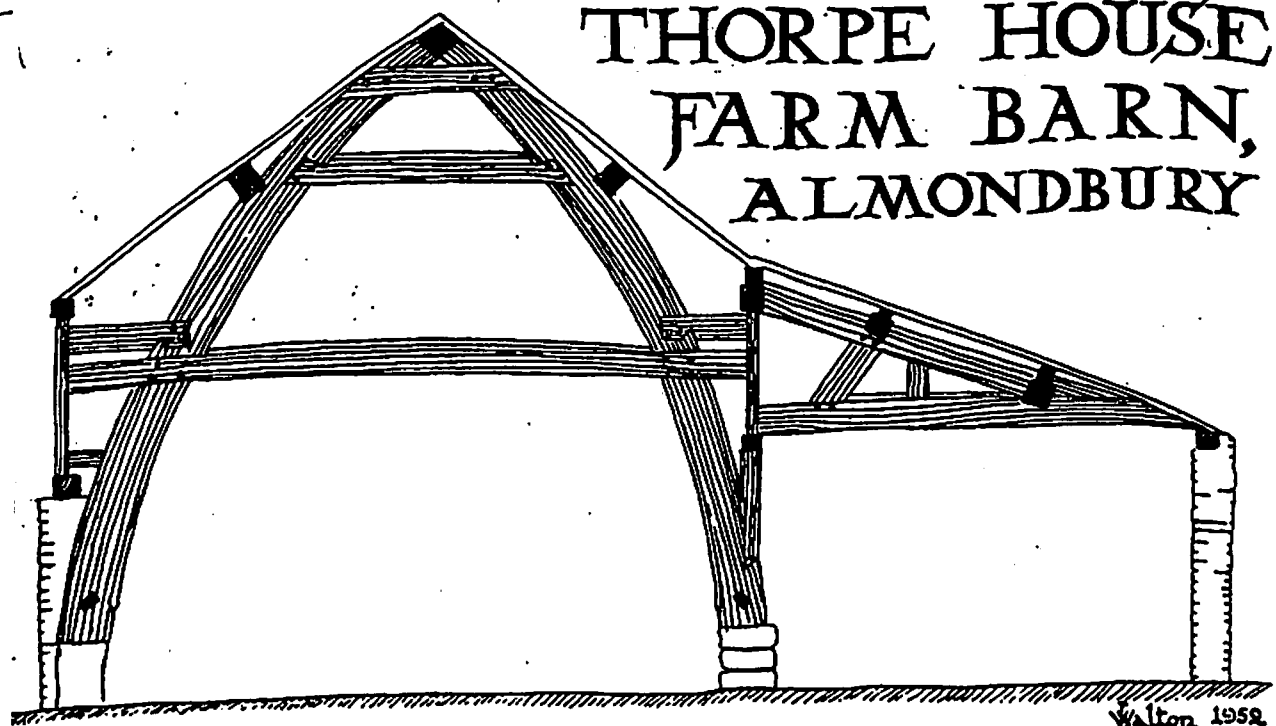
This is the largest and finest cruck-framed barn in the county. Of five bays, with a gabled cart-entry set in the third bay of its single aisle on the north side. It is stone walled, with a stone slate roof, excepting the south wall which is timber framed with red brick nogging. Possible late 15th century but most probably early 16th century, the crucks meet at the apex to cradle the diamond-set ridge piece and have two collar beams, the lower one notched with half-lap joints. The crucks are chamfered and held to the wall-posts by notched spurs as well as by tie-beams. The framed walls were of board-and-muntin, regionally called 'post-and-pan'. Attached to the west end bay is a later wing at right angles, running north with king-post trusses. There is some exposed framing on the rear west wall of this wing which was cased in stone in the 18th century.

The barn belongs to the local authority - Kirklees M.C., it is still in agricultural use and is let to a tenant farmer, Mr. Kaye. As it is listed Grade II* the local authority received grant-aid several years ago to do substantial repairs to bring it into good order.

As we pass through Almondbury village look out for Wormald's Hall opposite the parish church. This has spectacular exposed timber framing of the early 17th century.

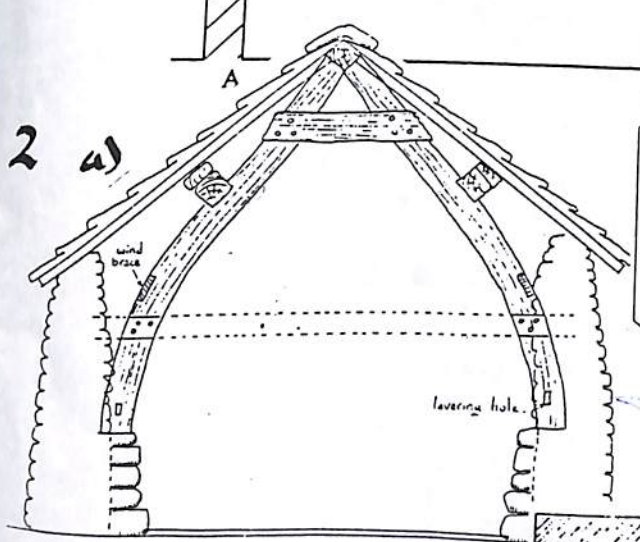
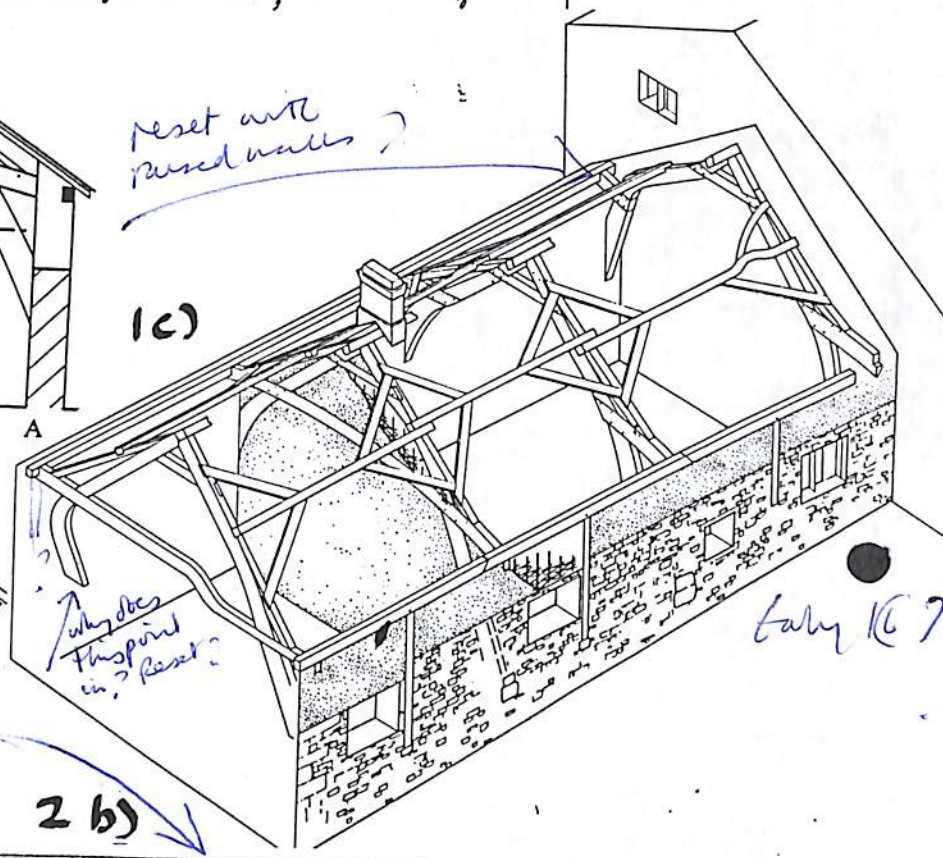
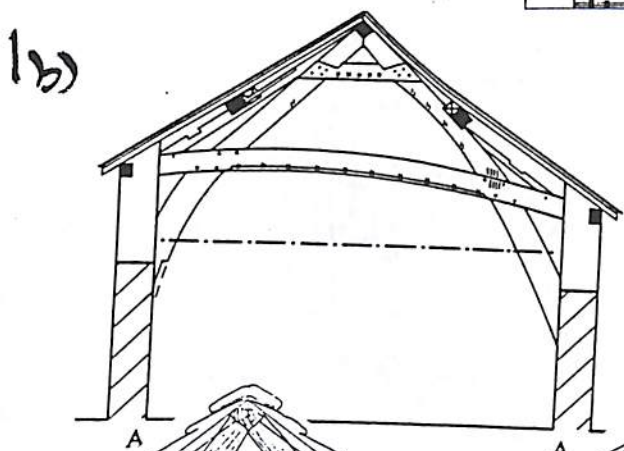
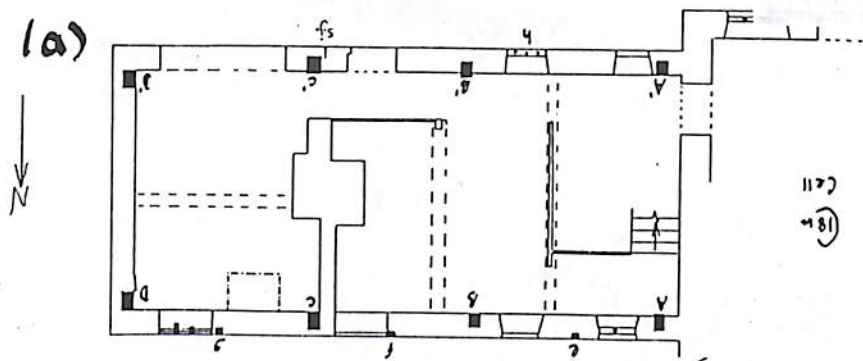


THORPE HOUSE FARM BARN, ALMONDBURY

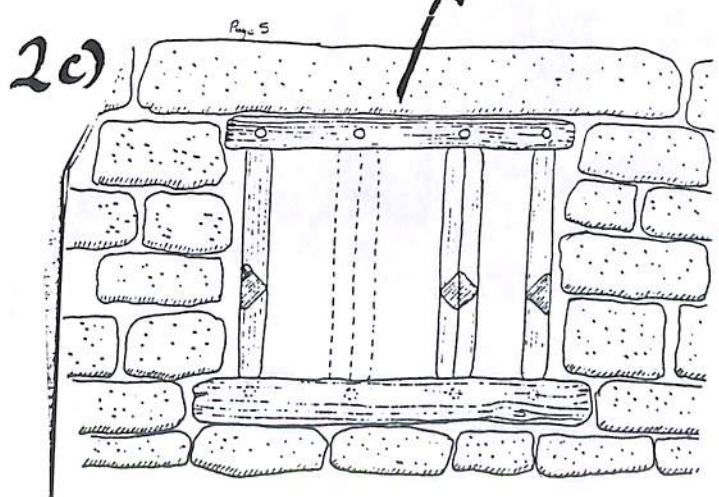
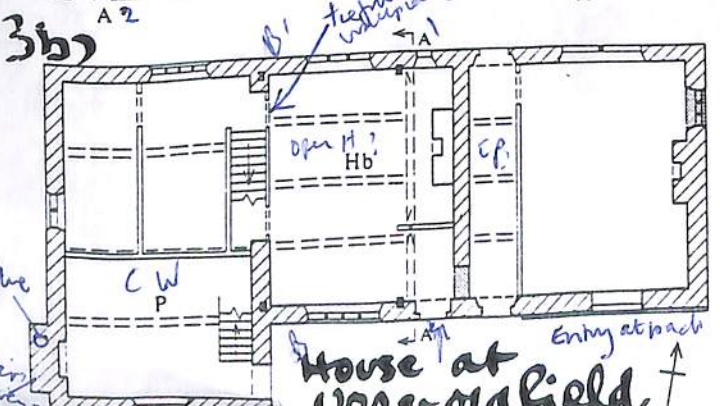
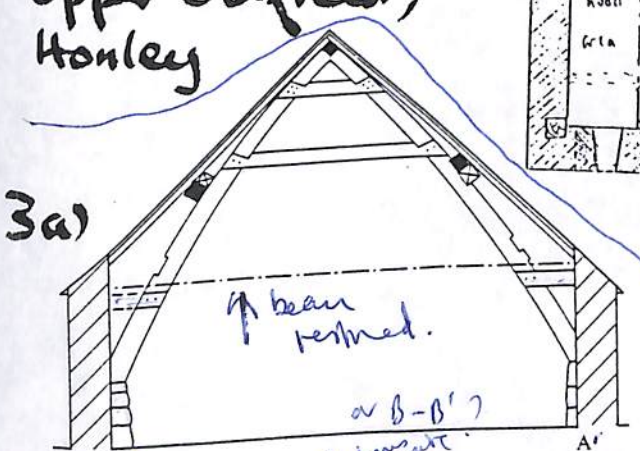
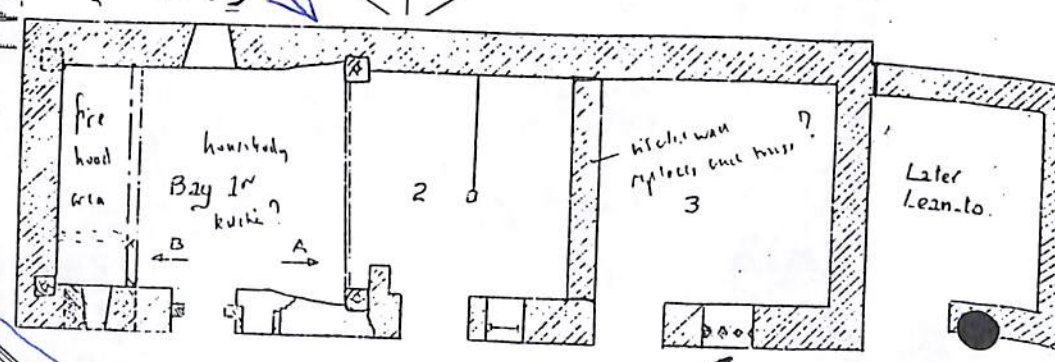


Yalton 1952

1 Inchfield, Walsden Toolmorden



2) Small barn/cottage Upper Oldfield, Honley



Inside elevation of Window in Bay 3
Scale 1 1/2" = 1'-0"
mullion sections superimposed