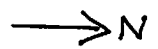
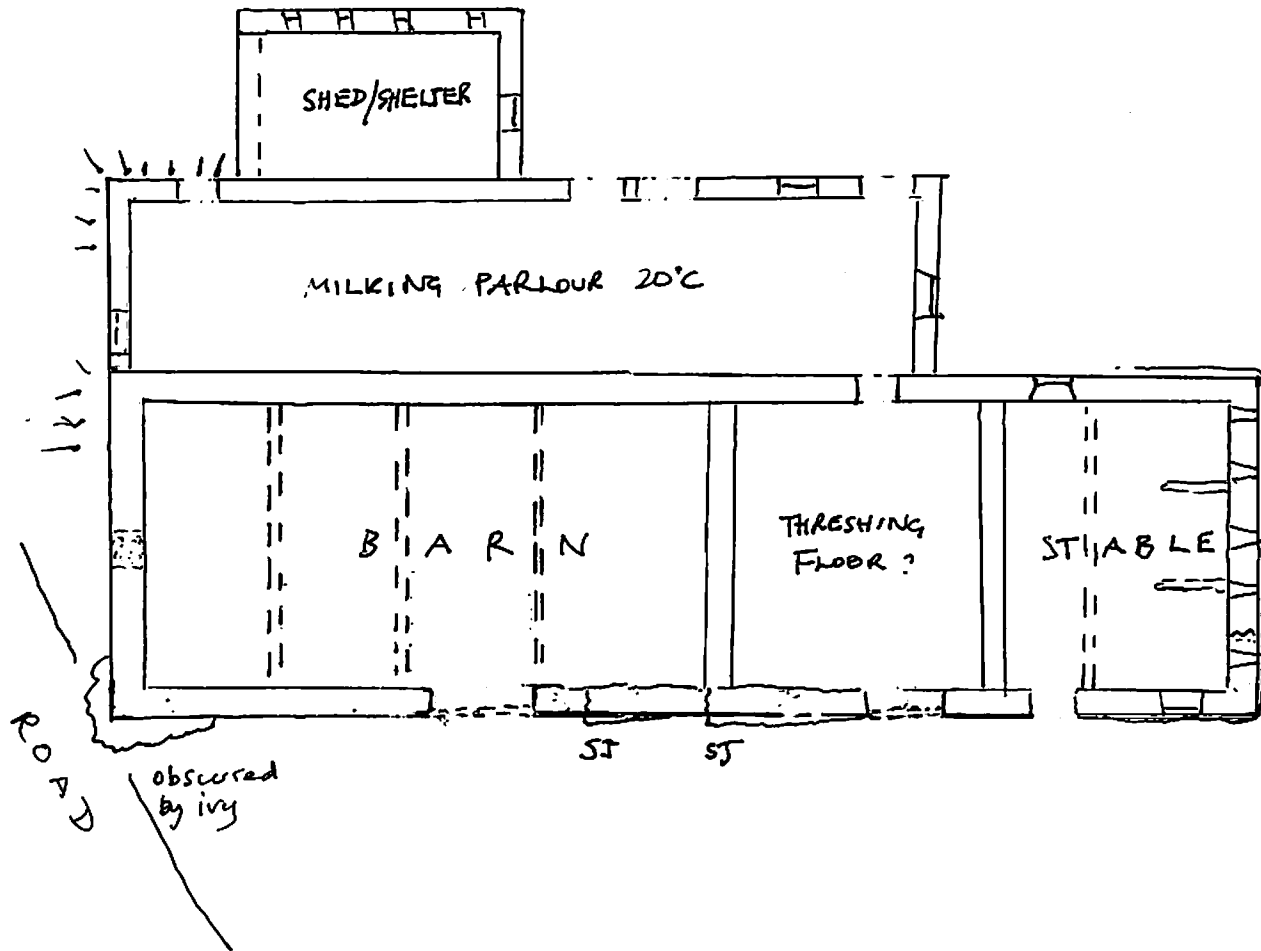
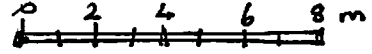


PINDER ING BARN, AUSWICK

Fig 1. PLAN

1/200

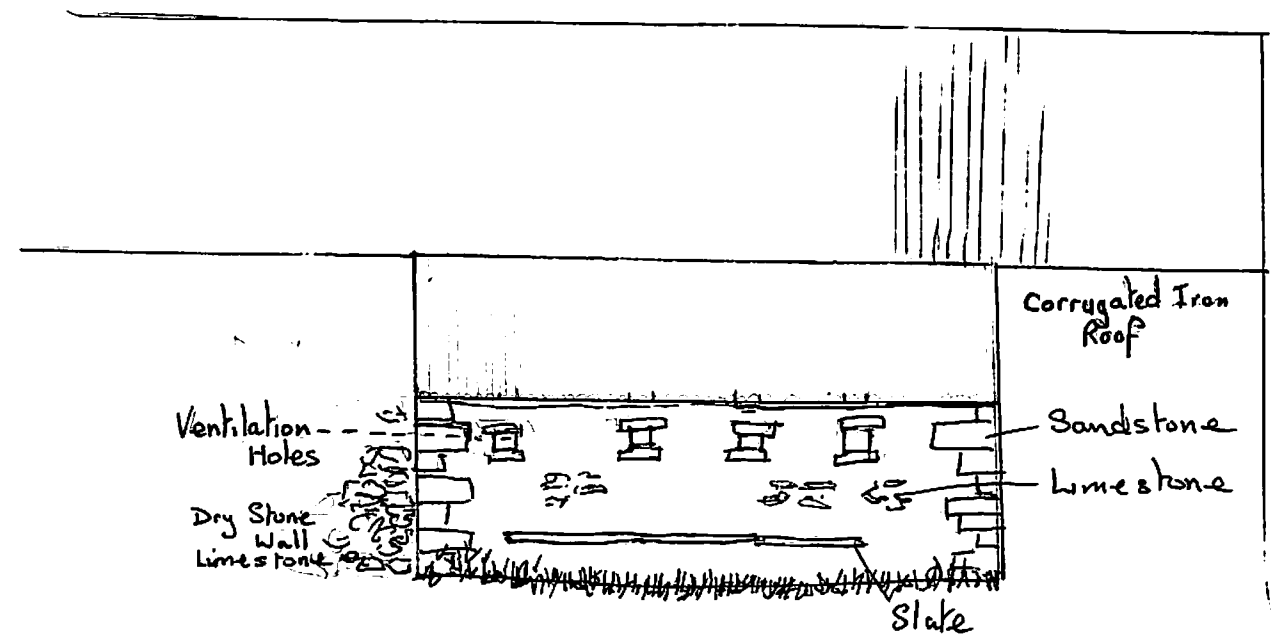


SITE OF A
DEMOLISHED
BARN

← N

1:100
Scale

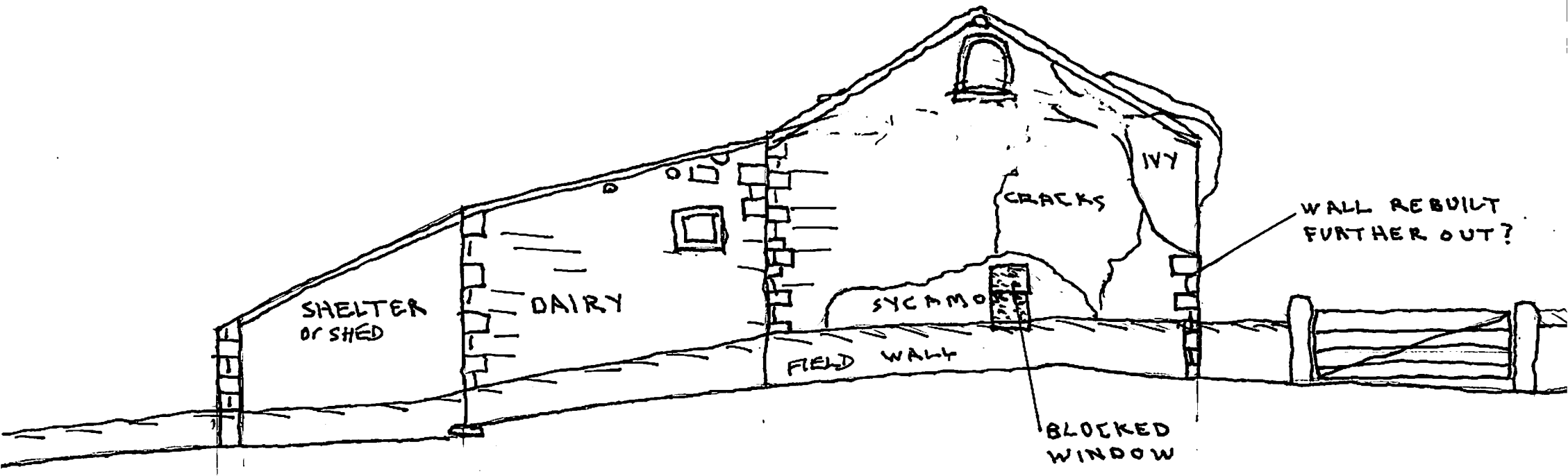
Building C
HARDEN



THE SHELTER OR SHED Fig. 5
Looking east.

SOUTH ELEVATION

Fig 3^b



PINDER ING BARN

SOUTH ELEVATION

1:100

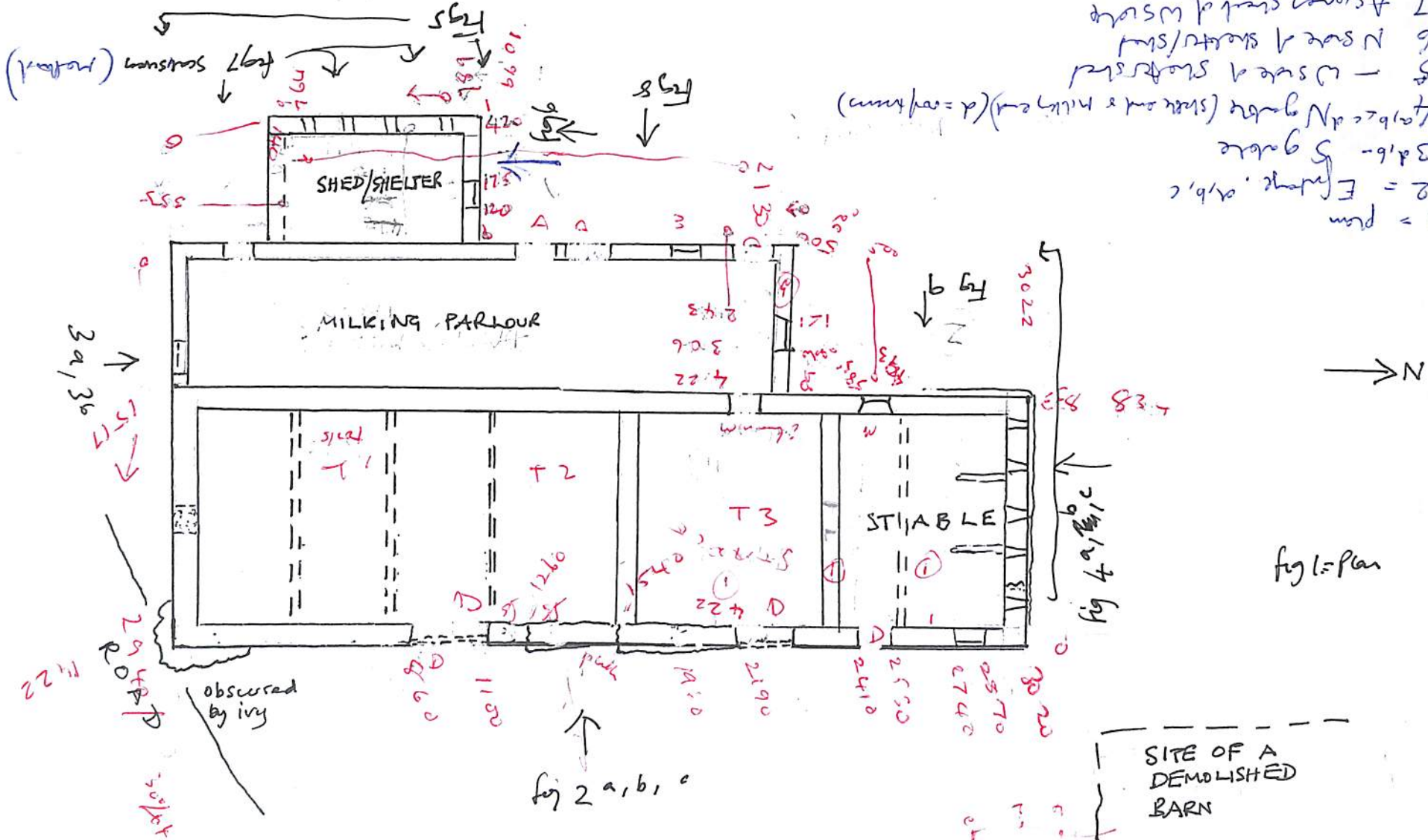
GRAHAM STEELE

11 JUNE 2017

Plan - fig 1

PINDER ING BARN, AUSWICK

1/200 0 2 4 6 8 m



- Fig 1 = plan
- 2 = Entrance, a, b, c
 - 3 a, b - 5 gates
 - 4 a, b, c d N gate (shed end & milking end) (d = roof truss)
 - 5 - W side of shed/shelter
 - 6 - N side of shed/shelter
 - 7 - A side of shed/shelter
 - 8 - W. Elev of milk farm
 - 9 - W elev of stable

N

fig 1 = plan

SITE OF A DEMOLISHED BARN

fig 2 a, b, c

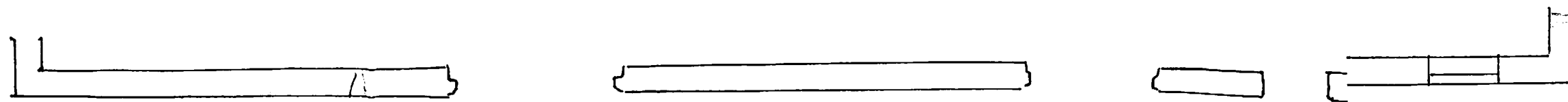
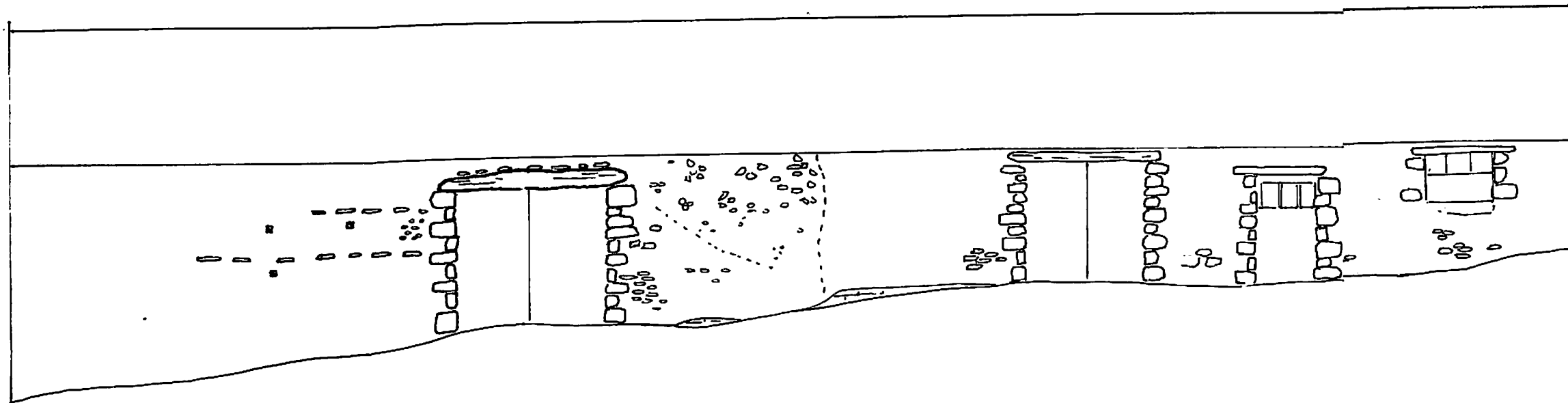
1220

EAST FRONTAGE Fig 2^a

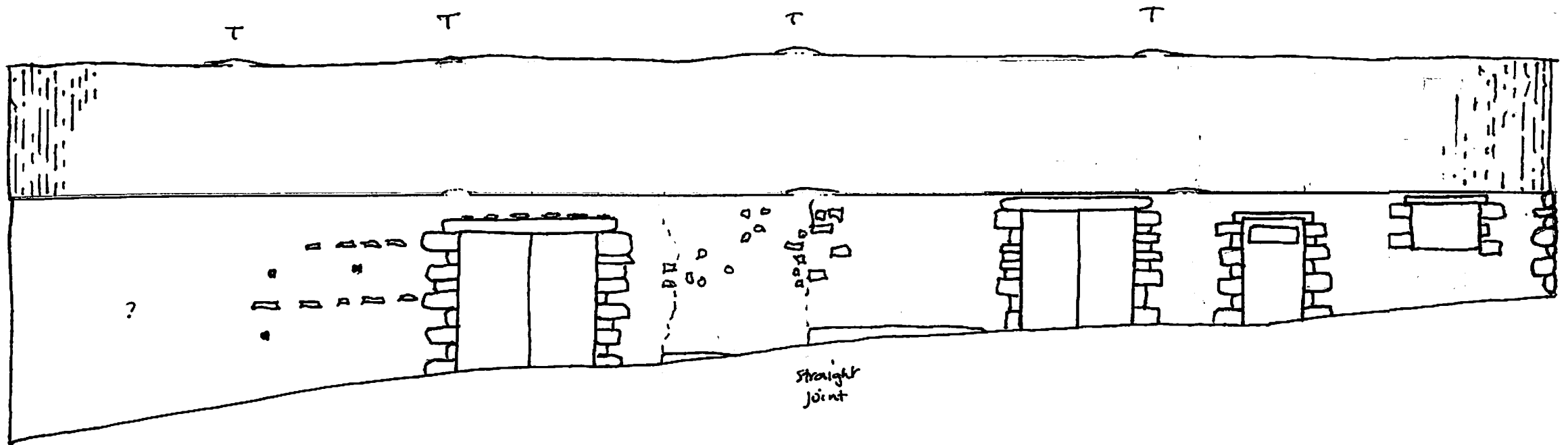
EAST ELEVATION

1:100

11 JUNE 2017

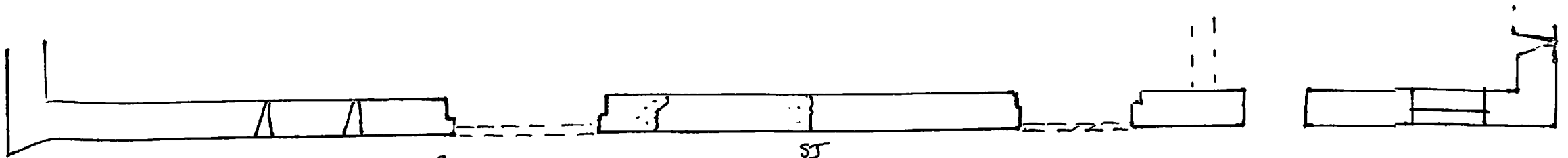


Lynda Hutchins



AUSTWICK "TITHE BARN" Fig 2b
 East Elevation T = truss site
 1:100

11.6.17 DF.



Plan of East Wall
 1:100

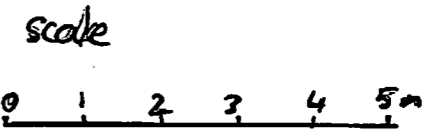
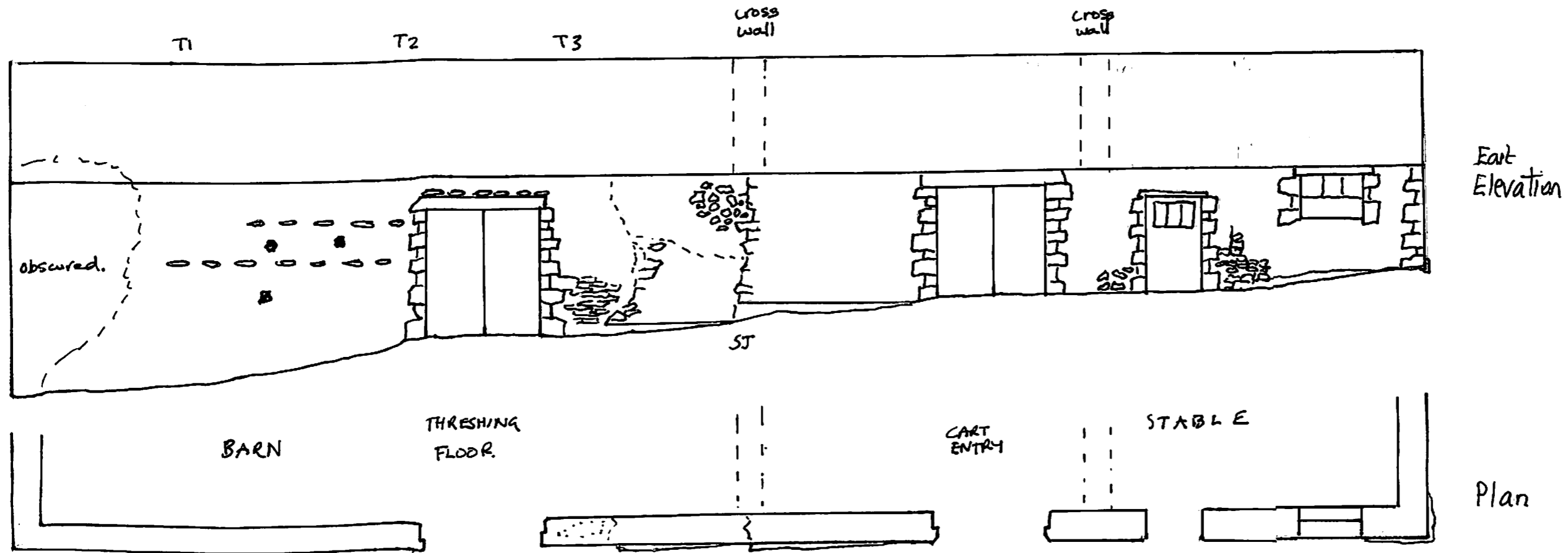
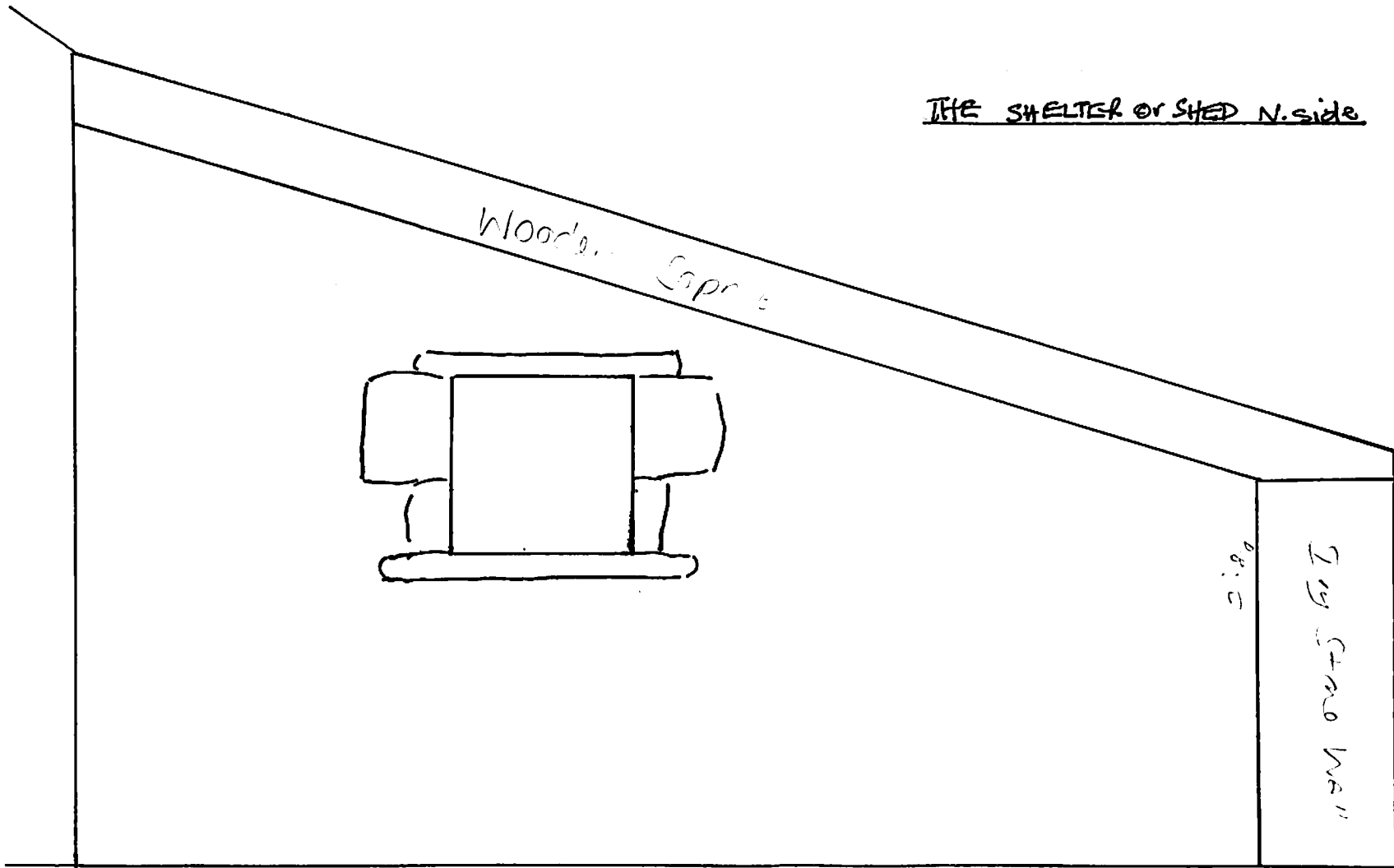


Fig 2^c Austwick Tythe Barn
11.6.17



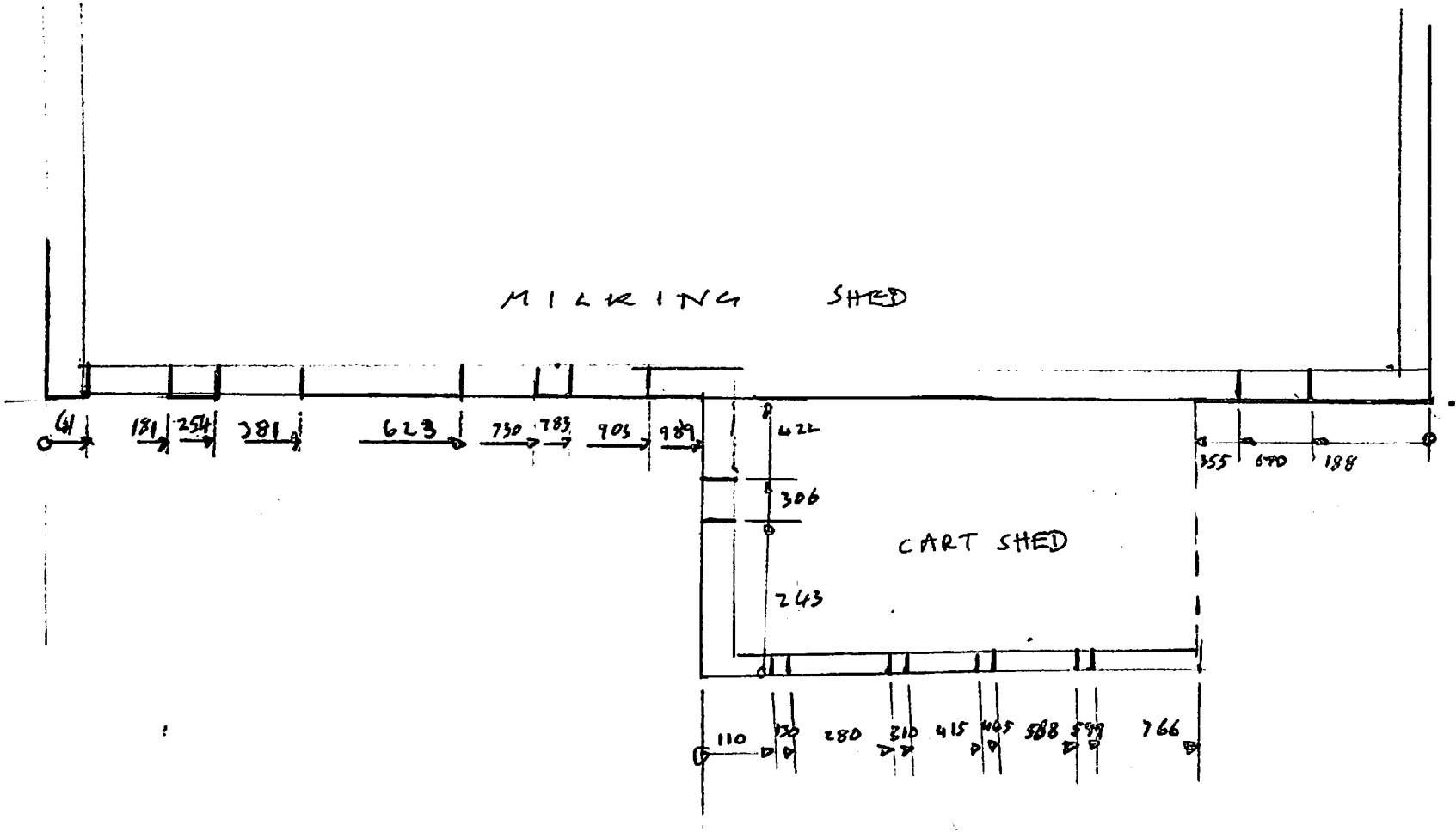
THE SHELTER OR SHED N. side Fig. 6



0 100 200 300 400 500 mm

Scale 1:20

Scale 1:100



0 1 2 3 4^m Scale 1:100



SCALE SURVEY OF THE WEST SIDE

Fig. 7

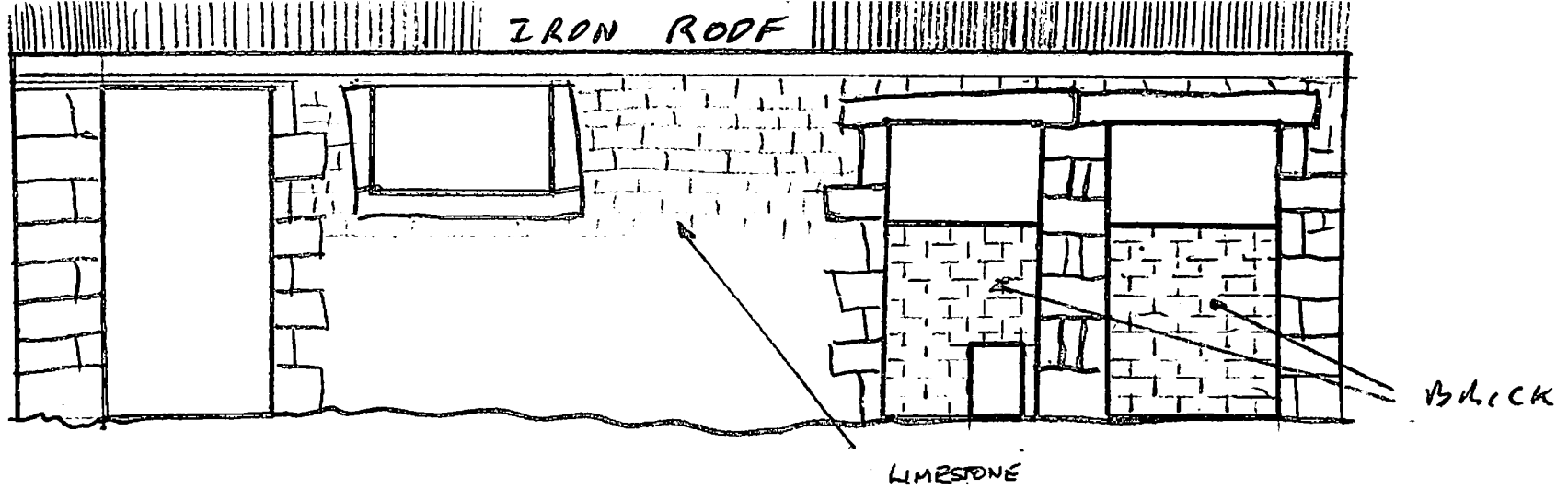
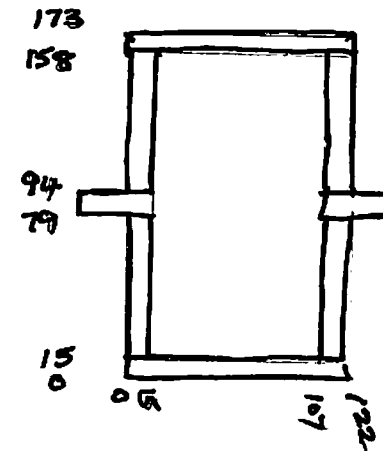


Fig 8.
THE WEST EXTERIOR OF THE MILKING PARLOUR

Tythe Barn, Austwide

ENLARGED VIEW
OF WINDOW

NOT DRAWN
TO
SCALE



Rock faced
square frame

Corrugated
Metal
Roof

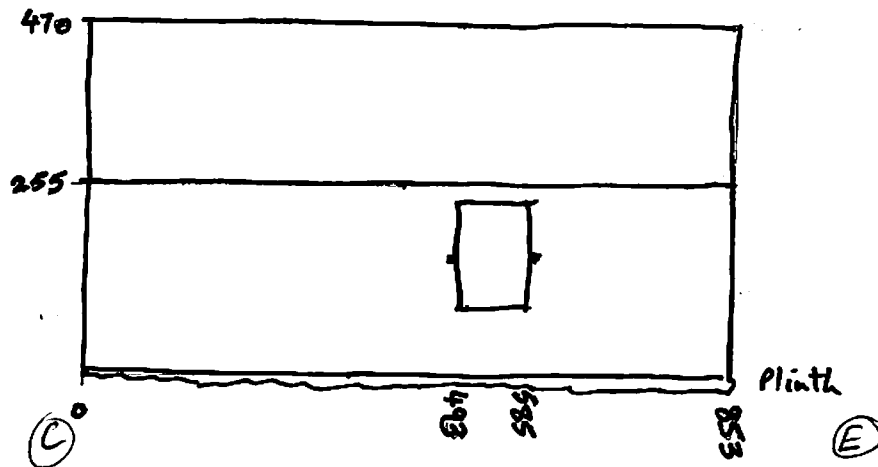


Fig. 9

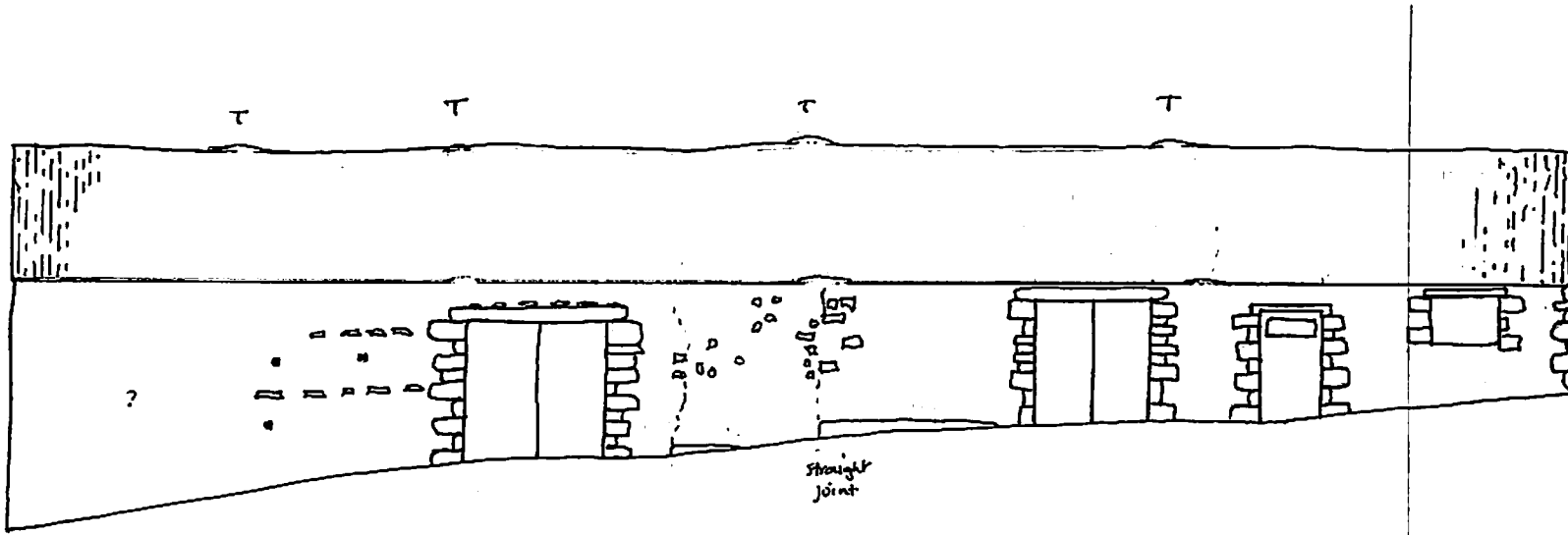
SIDE

WEST ELEVATION OF STABLE

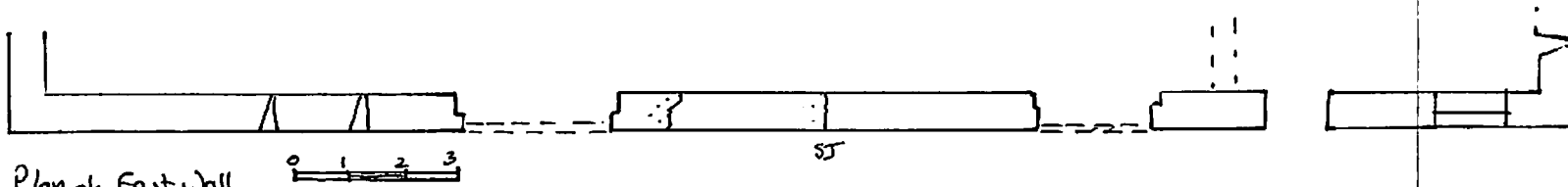
scale 1:100



11/6/2017

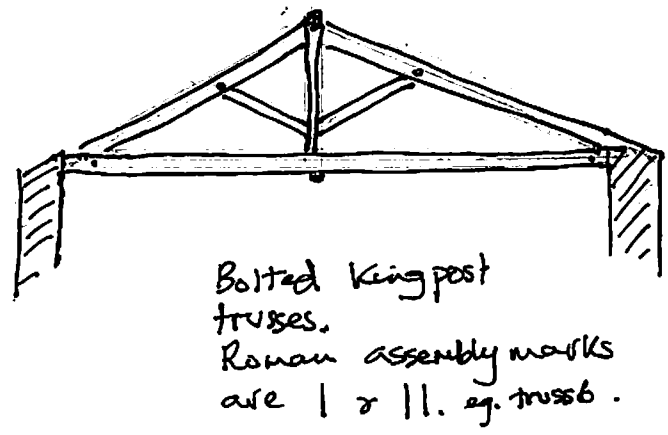
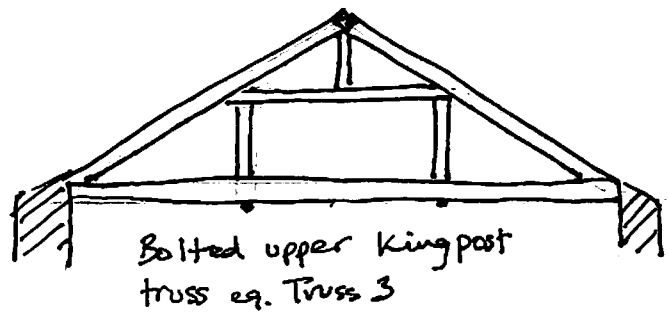


AUSTWICK "THE BAAN" Fig 2b
 East Elevation T = truss site
 1:100
 11.6.17 DF.



Plan of East Wall
 1:100

Fig 4^d ROOF TRUSSES. IN BARN



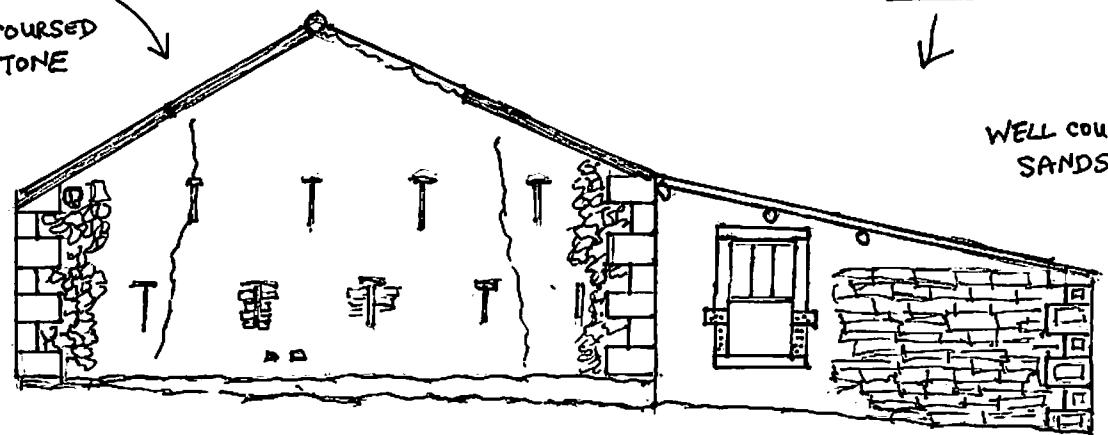
ACA

NORTH GABLE END Fig 4^a

BARN
ROUGH COURSED
LIMESTONE

ADDED MILKING SHED

WELL COURSED
SANDSTONE



TYTHE BARN AUSTWICK

ELEVATION
SCALE 1:100

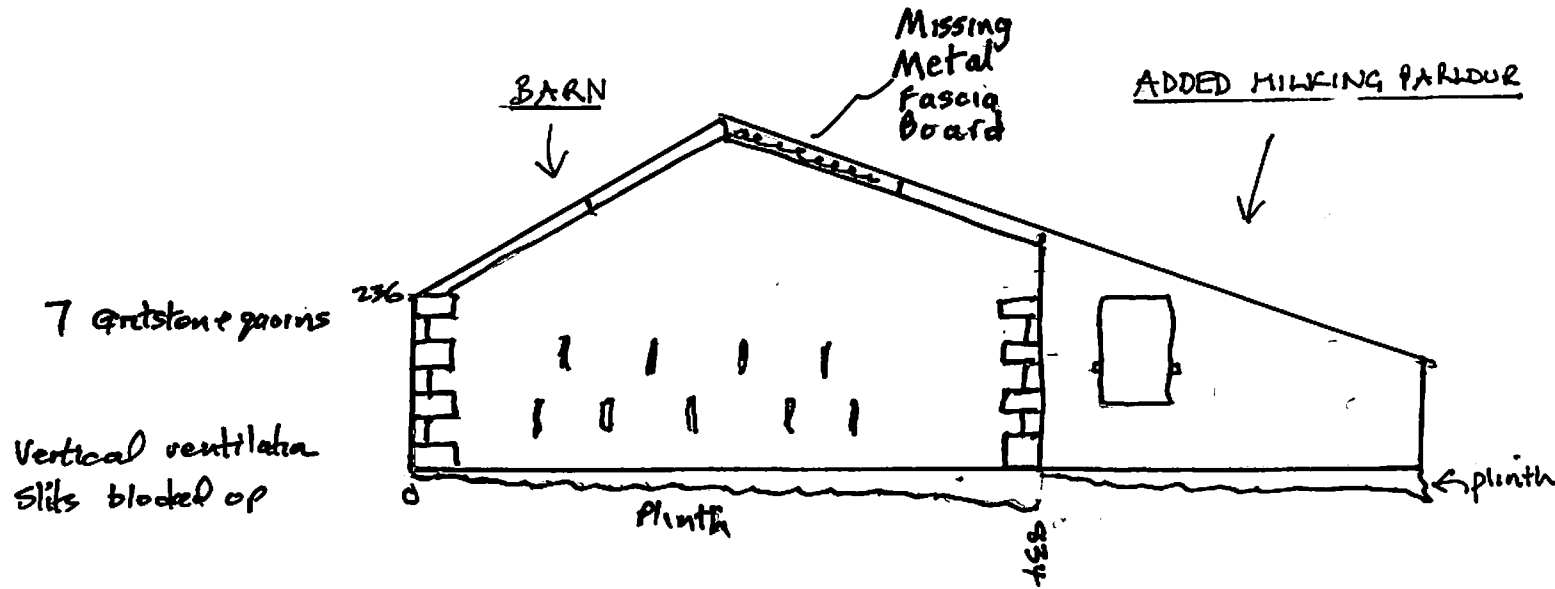
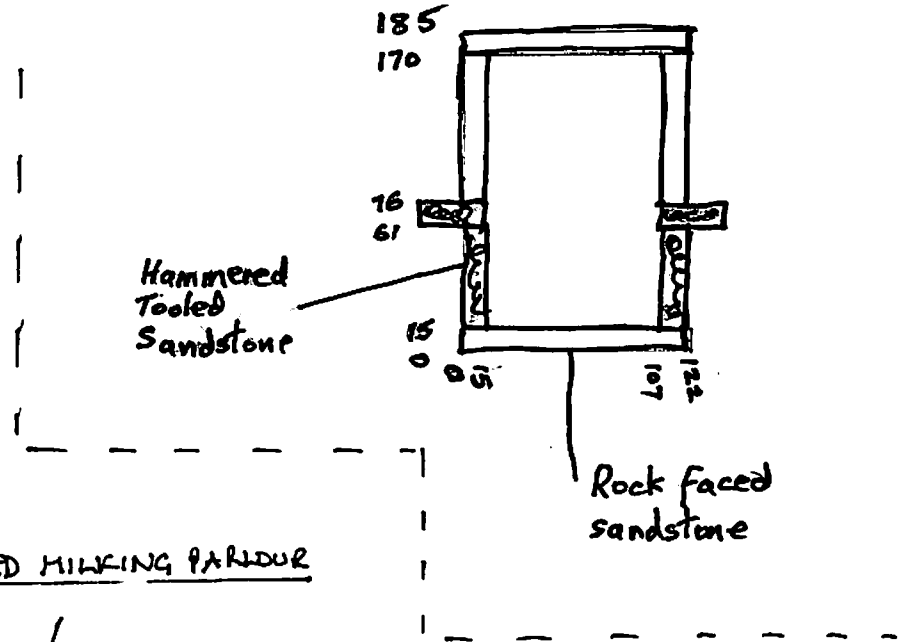
11 JUNE 2017

Tythe Barn, Austwick

Enlarged view of window
(not to scale)

Fig 4**b**

NORTH GABLE END



11.6.2017

GABLE
END
NORTH ELEVATION

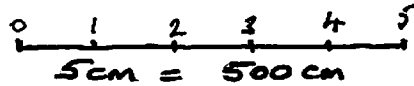
SCALE
1:100

11/6/2017

11-06-2017

"Tythe Barn", Austwick

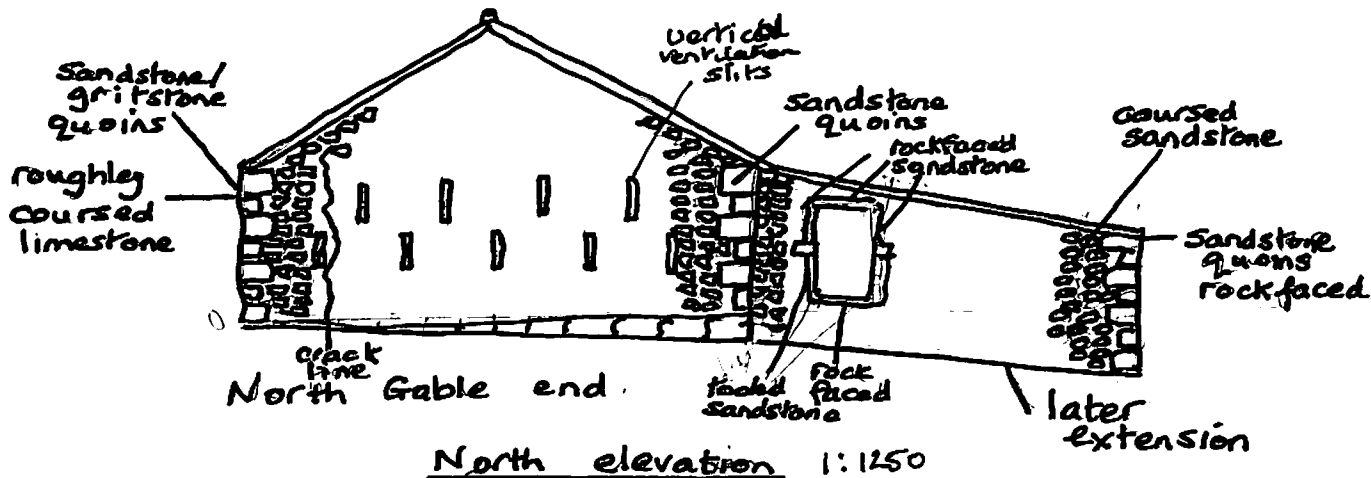
Scale 1:100



PINDER ING BARN, AUSTWICK

STABLE (N or W sides)

Fig. 4^c



11.06.2017

