

20x100x7
9000

① TOWN HEAD
 ⑤ Reading Rooms
 ⑥ Australia Hall
 ⑧ Old School - (much rebuilt)
 ⑨ A. HAN (A11)
 ⑩ TOWN HEAD Lane



⑦ Old Hall farm
 ⑧ House below plus:
 ⑨ Lane & terrace at both of Townhead Lane

A2 MAIN ROAD
 long terrace
 MAIN ST.

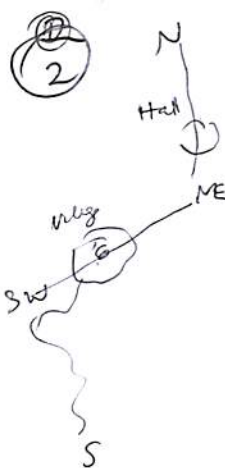
⑨ 1673
 John Learning & Mary (Bartropie)
 367 - 2 story (see survey)
 1673
 JAL
 John & Mary Learning

⑩ School
 Main St 1842 stone
 School 1842
 C. A. Gillingham
 of bankland Hall
 property
 9000s (1910)
 Splendid windows (1910)
 Broad footing

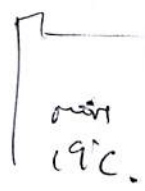
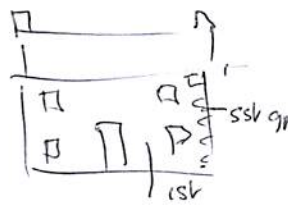
⑩ 1910 terrace of 2 stories just before low st
 low st

⑪ Northcliffe (low st corner) S.
 note shop front opposite
 Temp Soc - terrace
 shop front
 low st lane
 Main Street
 converted with a Temperance Soc
 The Independent Order of Rechabites (abstinence of alcohol)
 The largest Temperance Soc
 Opposite Northcliffe is Applegate (space)
 Here

John Low Lane is Old Reading Room



Above Naslyffe
19°C

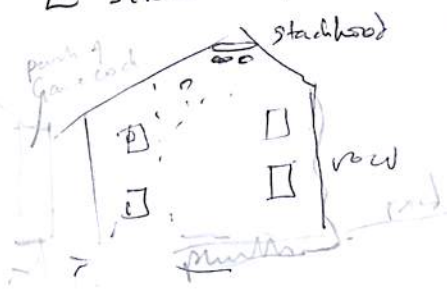


- Opposite is a symmetrical 18°C line

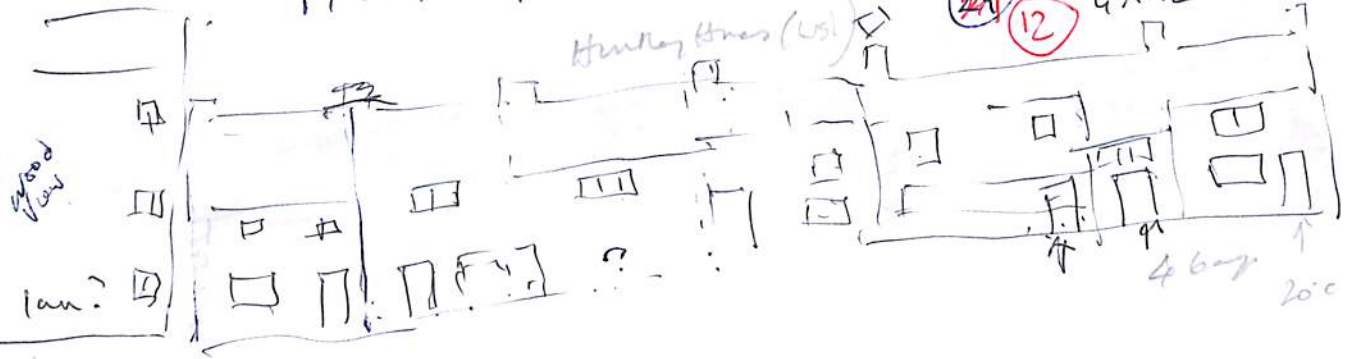


More terraced houses to end of GREEN
N side oval, lighthouse
Sashes made for window
19°C 1700-1750?

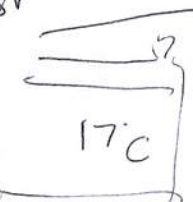
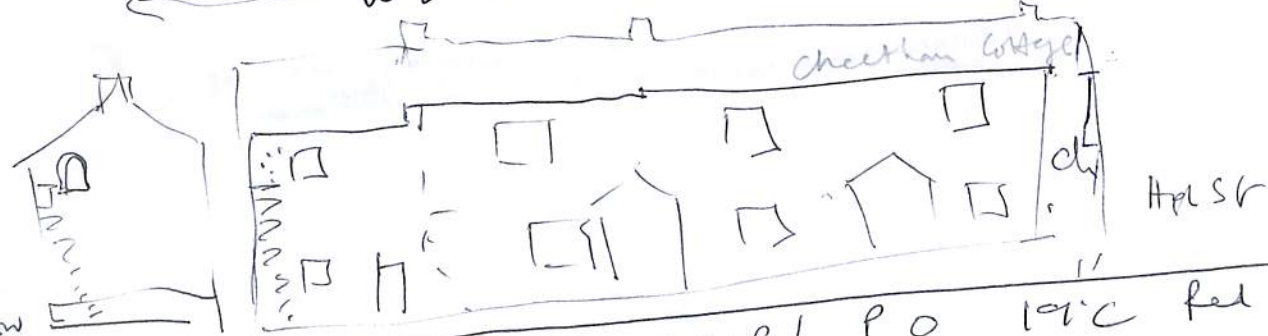
E SIDE OF GREEN



N/TOP OF GREEN



W END OF GREEN



- STOP / PO 19°C fed st

19°C

THE GREEN

2/3

171 c

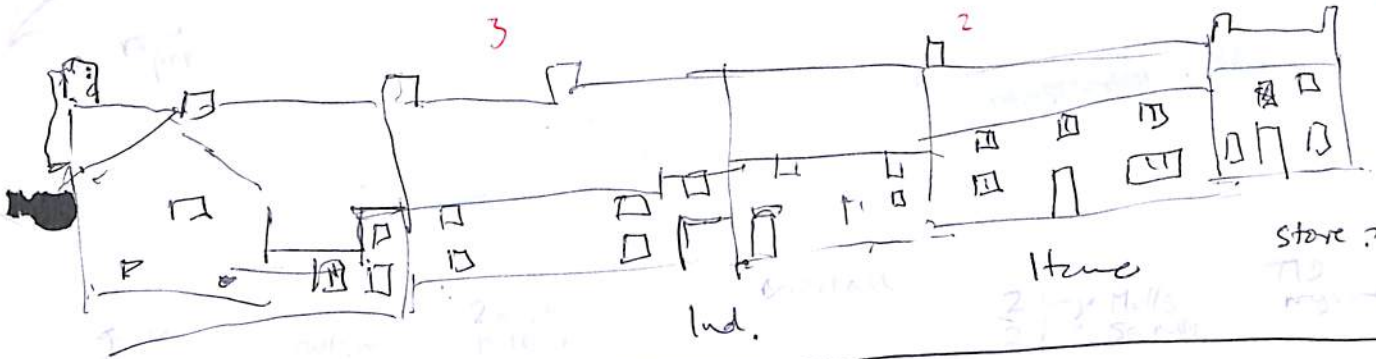
vicarage Hall



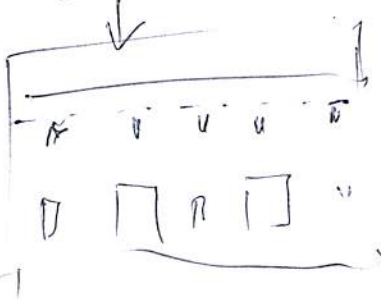
N. facing side of green - white houses

Low St

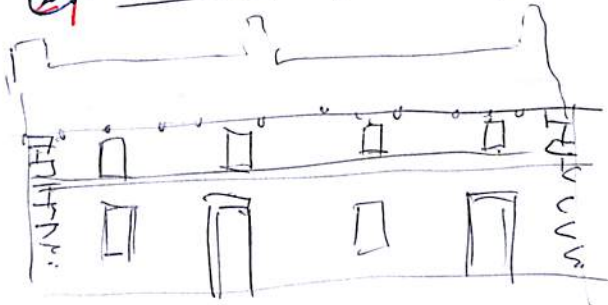
2 x 3



just bar

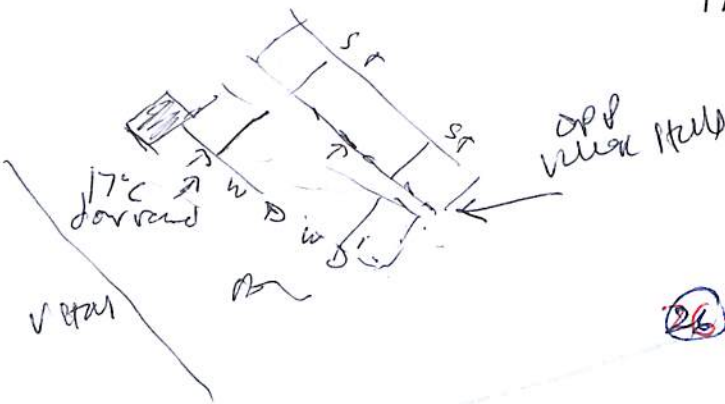


27 Crossstone (Market cross)



17 1 09
1 A

1714 T
1 A



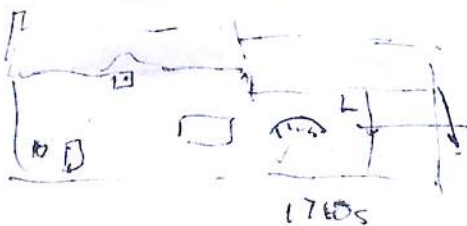
Chapman park to 1879

26 CHURCH



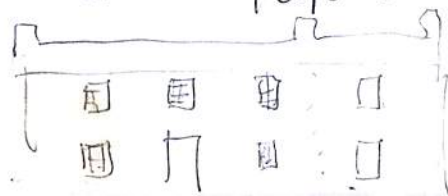
Chapel of Ease i parcel of Chapm?

Farm 256 1710s



25

Independent point
Vicars when vicar ~ 1879
Previously vicarage house
18901
S side of Chapm Rd



P. (4)

Clapham Rd (top)

(28) Penfold

From below & next to church. Med 18" cat door

Opp - mixed terrace 19/20c

20c houses

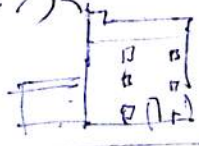
Passage on N side (detached 19c)

High Street

(29) The Lodge 1721 A1 11 smoke pitage, Rebuilt?

Cross House 1719

Wood View (3 story inn?)



SPRING CROFT Terr.

Spout Spout Croft

MICE SEMIS (19) & SPRING

19'c BARN CONVERSION 2 cott's one here



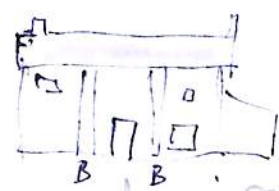
(22)

HARDEN COTTAGES



1719

17'c. Windows, buttressed wall. "cheese room" at back



(21)

HARDEN HOUSE

frontage a S so can see from road large chimney with one pot. parlour?



"Farmhouse"

(24)

TOWNEND COTT

1712

A WH. buttress like Harden Cott's



post 1840 Clapham Rd both.

(23)

TITHE BARN