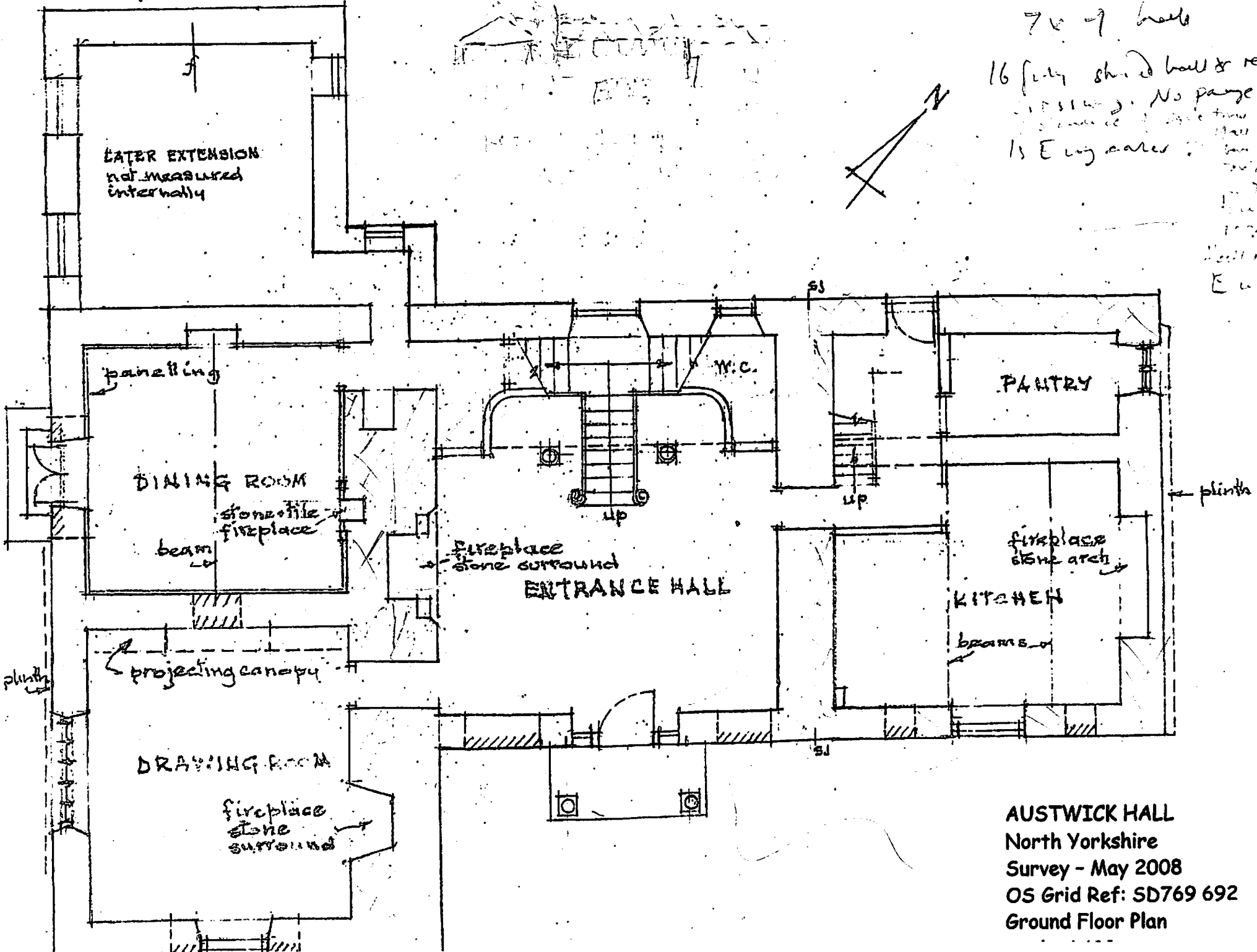
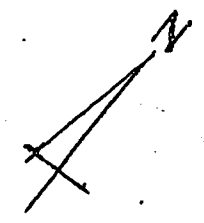


7 x 9 beds

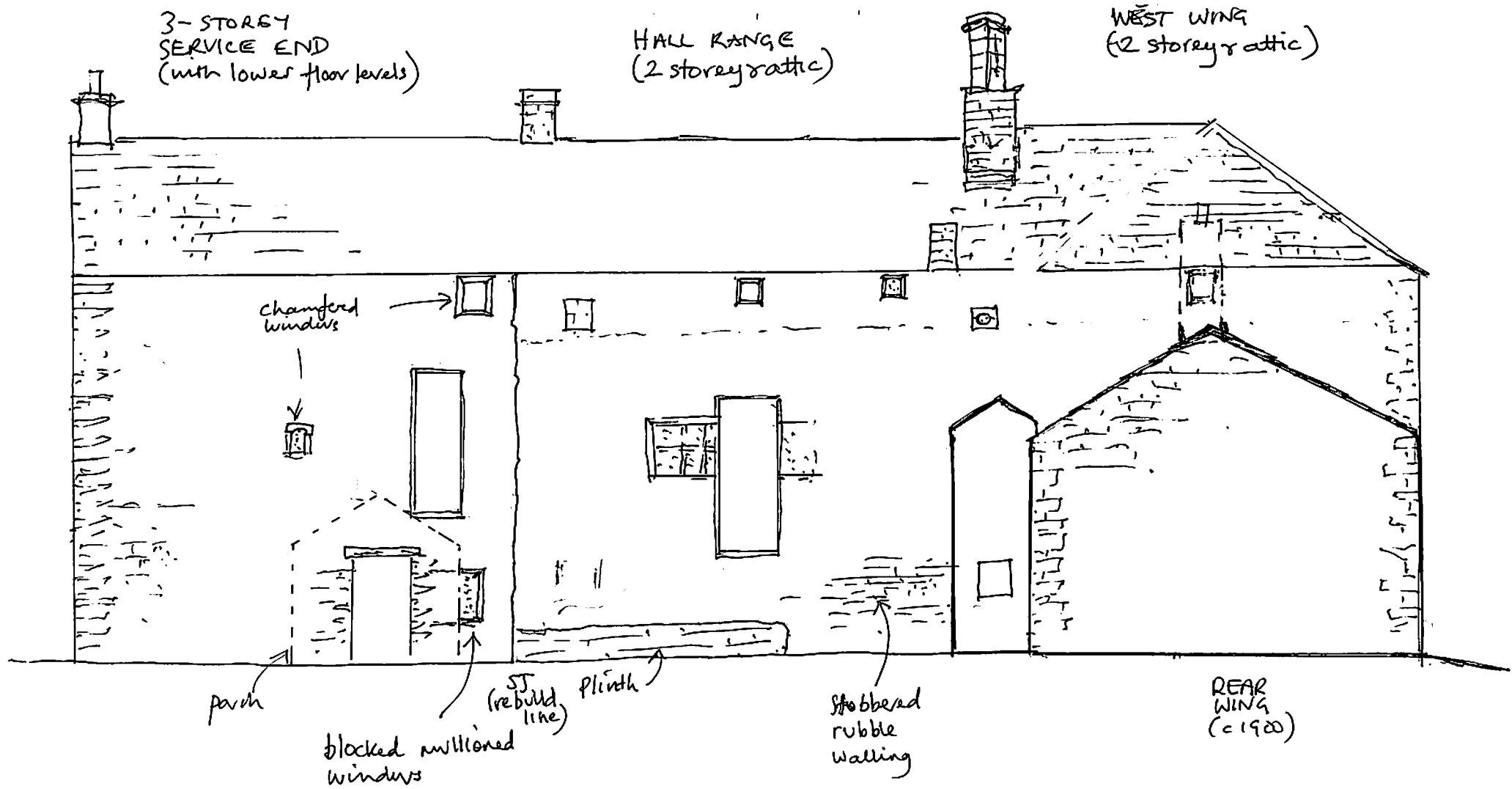
16 feet shield hall & register  
No page  
15 E wing area  
E wing area



**AUSTWICK HALL**  
North Yorkshire  
Survey - May 2008  
OS Grid Ref: SD769 692  
Ground Floor Plan

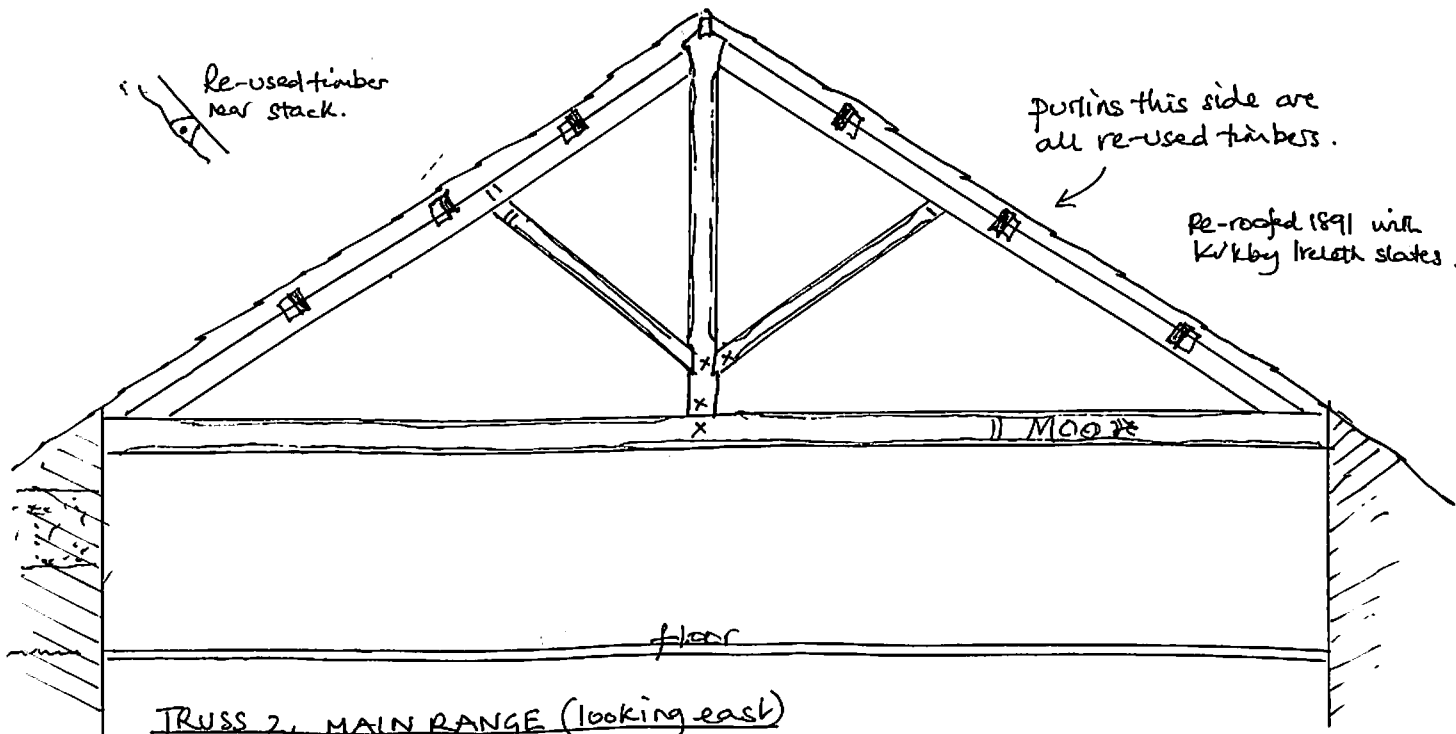
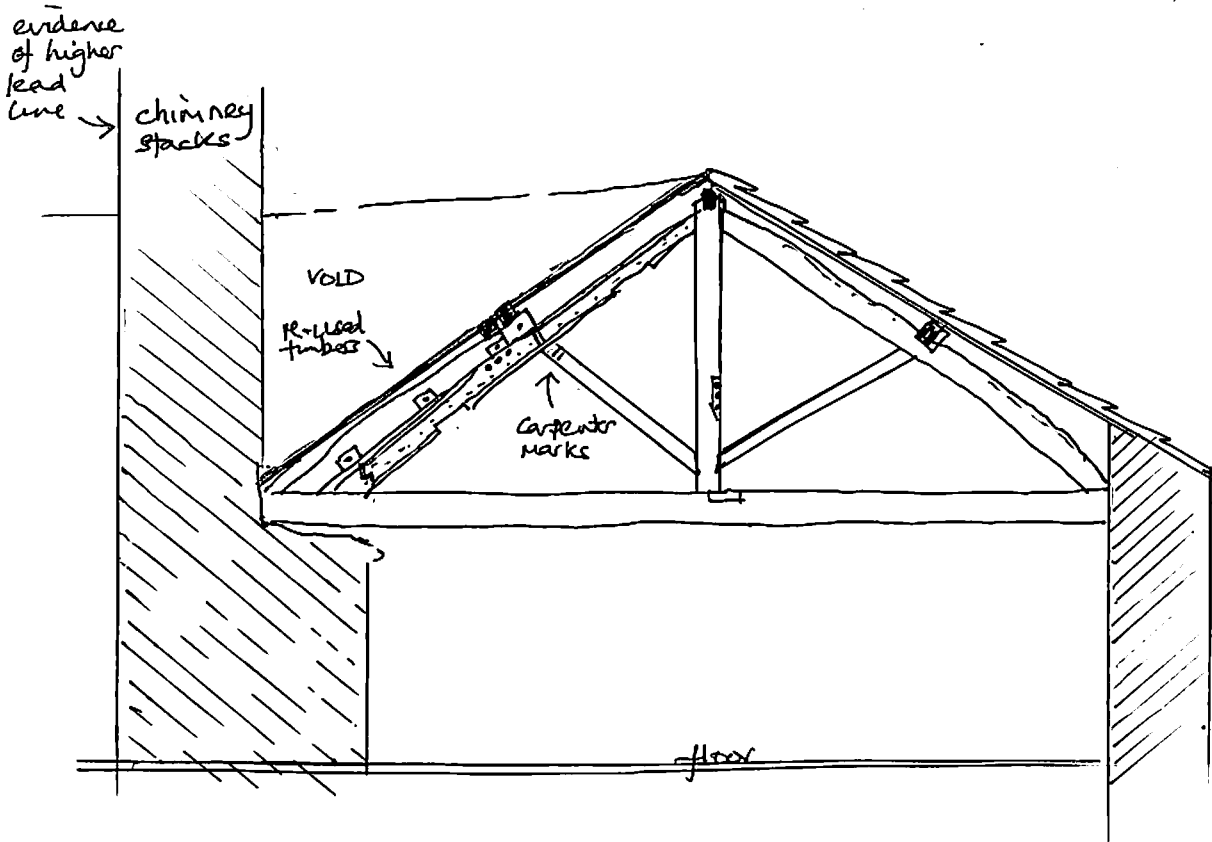
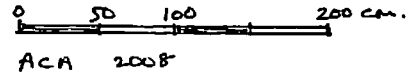
AUSTWICK HALL

Sketch of rear, north, wall.



# AUSTWICK HALL ROOF TRUSSES

TRUSS II, WEST WING (looking south)  
 Many of the component timbers are re-used or re-set.



TRUSS 2, MAIN RANGE (looking east)

Showing carpenter construction marks and graffiti, possibly "J Moore", in carpenter's red chalk.





Main Range Tim 2 & 3?



S Main Range N Tims 3?



W wing (c-truss)



