

Farrer James Esq^r Mary Seake

	A	R	P	S	S	D
6 Cattle Gates on Cam End	1	2	19	4	1	40
5 1/2 For Intack	1	-	11	4	1	20

Foster Jas^r Esq^l Mark Berresford

	A	R	P	S	S	D
28 Sheep Gates on Fee Close	-	-	-	3	4	4
					4	2
					3	19 10

Ford John Esq^r John Redmayne

	A	R	P	S	S	D
House V ^c	-	-	-	-	2	10 0
Barns Stable V ^c	-	-	-	-	15	-
Caffe Paddock	1	1	24	17	1	3 9
Paddock	3	1	6	22	3	12 3
Small D ^c	1	1	16	37	2	9 11
Low Caffe Paddock	7	3	18	20	7	17 3
Lady Bank	6	1	25	20	6	8 1
Muck ^c Ing	14	3	10	27	19	19 11
Middle Meadow	11	-	23	20	11	2 10
Far Meadow	7	2	6	20	7	10 9 1
Sheep Scarr	17	2	2	8	7	- 4 -
Barn	-	-	-	-	11	13 10
High Meadow	14	2	19	16	22	4 3
Rape Close	40	1	23	11	5	19 6
Long Holme	5	3	36	20	-	18 6
Meadu Field	2	1	11	8	-	4 -
Baru	-	-	-	-	1	18 1
Willow Yarth	3	-	28	12	-	3 -
Jewet Hill	1	2	3	2	-	6 3
Road Side	-	3	5	8	-	3 9 2
Drale Mire	6	3	27	10	21	17 6
Cow Pasture	45	3	-	10	3	7 7
Bull Copy	5	-	32	13	-	-
Carried Over	195	3	34	-	142	15 6

Ford John Esq^r John Redmayne

	A	R	P	S	£	s	d
Brought Forward	195	3	34	-	42	15	6
Far Tenots	30	3	37	4	6	3	11
Crake Hill	35	-	34	7	12	6	5
Wood	4	3	39	4	-	19	11
Over Ground	48	-	16	11	26	9	1
Rough Hill	20	3	25	5	7	9	6
Old Moor	184	1	37	1	9	4	5
High Moor	194	-	-	1	9	14	-
A	<u>723</u>	<u>2</u>	<u>22</u>	<u>L</u>	<u>215</u>	<u>2</u>	<u>9</u>

10 15 2
200 7 7

Foster John W^m Esq^r Chris^t Bentham

	A	R	P	S	£	s	d
House Barn &c	-	-	-	-	2	17	-
Selside Shaws	55	1	33	10	27	14	6
Calfe Croft	1	2	34	20	1	14	3
Croft	2	2	35	42	5	14	2
Intack	-	3	25	13	-	11	9
Broad Dale	2	-	21	44	4	13	9
Barn	-	-	-	-	-	4	-
Now in One	2	1	38	20	13	2	11
May Mire Bottom	4	-	39				
May Mire End	7	-	34				
May Mire Banks	3	1	32	13	2	4	10
Kipping Dale	1	1	36	10	-	14	9
Mayths Pasture	18	1	8	26	23	15	9
Mayths Meadow	6	3	14	34	11	12	5
Footan Meadow	13	-	-	27	17	#	0
Little Limid Pasture	5	2	10	20	5	#	3
Miss Bentham's Shaws	26	3	36	10	13	9	9
Foss Meadow	4	2	13	44	10	1	6
Barn	-	-	-	-	-	7	7
Croft	-	2	35	30	1	1	6
Ac ^r	<u>157</u>	<u>3</u>	<u>3</u>	<u>L</u>	<u>143</u>	<u>2</u>	<u>1</u>

Foster W^m John Christ^t Bentham

	A	R	P	S	S	d
Brought Forward	157	3	3	—	143	2 1
49 Sheep Gates on Fee Close	—	—	—	3	7	7
18 Sheep Gates on Subsoil	—	—	—	2/9	2	9 6
2 2/3 Horse Gates on Fair Moor	—	—	—	40	1	6 8
On Moors	22	3	6	1/3	1	8 5
Jewit Hill	1	—	—	2	—	2
Ac ^r	<u>181</u>	<u>2</u>	<u>9</u>	<u>S</u>	<u>155</u>	<u>15 8</u>

Cottages

Miles Atkinson	1	13	3		1	15
Not Occupied					1	—

Haygarth John Self

	A	R	P	S	S	d
House and Barn	—	—	—	—	1	18
Fair Field	11	2	8	5/6	3	3 6
Back Field	12	—	31	5/6	3	7
Home Field	2	2	33	23	3	2 2
Paddock	1	1	32	8	—	11 7
Gill Side	—	2	19	1/6	—	3
Gill Pasture	9	2	11	2/6	1	3 11
Fair Bottom	4	—	37	14	2	19 2
Barn	—	—	—	—	—	2
Back Field	2	—	19	24	2	10 10
Bank	1	3	8	12	1	1 7
Well Field	1	—	28	12	—	14 1
Low Field	1	3	34	18	1	15 3
High Field	3	—	36	22	3	10 11
Moor	200	—	—	1/6	15	—
16 Cattle Gates on Cam	—	—	—	4	3	4
Old House & Barn	—	—	—	—	—	10
Ac ^r	<u>252</u>	<u>2</u>	<u>76</u>	<u>S</u>	<u>44</u>	<u>14 3</u>

2 4 9
41 9 6

Ingleby Thomas Esq^r. Mill^m. Sund

	A	R	P	S	£	s	d
House Garden & Fold Y ^e	-	-	-	-	2	18	0
Little Hill	2	1	28	28	3	7	10
Barn	-	-	-	-	-	4	0
Great Hill	11	-	10	10	5	10	7
Barn	-	-	-	-	-	4	3
Holme	3	1	9	14	2	6	3
Great Field	6	-	11	30	9	2	-
Fair Bottom	4	3	17	36	8	14	9
High Cow Green	2	3	17	36	5	2	9
Long Gill & Cow Field	9	-	30	11	5	1	-
Low Cow Green	4	2	30	30	7	-	7
Parrock	-	2	34	36	1	5	7
Barn	-	-	-	-	-	7	-
Cranberry Hill	9	3	12	3	7	9	5
Holme Hill	10	2	4	8	4	4	2
Turf Stack & Hagg	40	1	39	8	16	3	11
Coppy	5	2	26	20	5	13	3
Burton Close	80	3	38	9	36	8	10
Moor	100	-	-	1/2	5	16	8
7 Sheep Gates on Pennegent	-	-	-	1	-	7	-
	304	1	23	£	129	3	2
					6	9	2
					122	14	0

Lister Cunliff Esq^r. Rob^t. Swinbank

	A	R	P	S	£	s	d
House & Barn	-	-	-	-	-	-	10 0
West Haw	23	1	20	6	7	-	3
East Haw	42	1	16	6	12	14	1
Paddock	-	2	36	10	-	7	3
Green Haw Moor	243	3	11	1	12	3	9
	310	1	3	£	32	15	4
					1	12	9
					31	2	7

Jackson William Miles Bentham

Cottage	1	8	6	1	10	0
---------	---	---	---	---	----	---

* Stabling 11-2-38 13 7-12-9

Mitcalf Wood Esq. John Lambert

	A	R	P	S	£	s	d
House & Barns	-	-	-	-	2	7	0
Dales	2	-	38	22	2	9	2
Grainings	9	1	5	14	6	9	11
Barn	-	-	-	-	-	4	-
Foss	5	-	38	18	4	14	3
New Field	4	2	16	10	2	6	0
Far End	18	2	15	12	11	3	1
Barn	-	-	-	-	-	2	-
Bed Syke	4	3	17	6	1	9	1
Brows	10	-	19	18	9	2	1
Paddock	1	-	15	14	-	15	3
West Paddock	2	-	-	14	1	8	0
11 Cattle Gates on Wakes	-	-	-	8	4	8	-
38 1/2 Cattle Gates on Cam Pasture	-	-	-	16	30	16	-
22 Cattle Gates on Cam End	-	-	-	4	4	8	0
Bottoms Pasture	35	-	-	1	1	15	-
<i>Acc.</i>	<u>93</u>	<u>-</u>	<u>3</u>	<u>S</u>	<u>83</u>	<u>16</u>	<u>10</u>
					4	3	10
					79	13	-

Mr Miss Christopher Jackson

	A	R	P	S	£	s	d
House Garden & Hookery	-	-	-	-	-	3	2
Long Paddock	-	2	26	30	-	19	10
Haw Dale	3	-	20	40	6	5	-
Barn	-	-	-	-	-	7	-
Broad Dale	2	-	36	44	4	17	10
Broad Dale Paddock	-	2	8	42	1	3	1
Jackey Dale	1	2	28	44	3	13	8
Howey	13	-	13	20	13	1	8
Piece South East Corner of Howsey	-	-	17	2	-	-	2
Barn	-	-	-	-	-	3	-
Rammer Banks	4	3	13	16	3	17	4
Rammer Bottom	-	2	15	2	-	1	2
Jewit Hill	1	-	3	2	-	2	-
Round Close	3	1	7	8	1	6	4
Low Dale Mire	2	1	30	10	1	4	4
High Dale Mire	2	3	23	8	1	3	1
Intack	1	2	20	17	1	7	7
Dale on Selside Moss	21	1	35	1/3	1	6	10
Shaws Pasture	84	3	21	-	46	13	8
	<u>144</u>	<u>1</u>	<u>35</u>	<u>-</u>	<u>90</u>	<u>15</u>	<u>7</u>
Carried Forward							

Moore Miss Christopher Jackson

	A	R	P	S	L	S	D
Brought Forward	144	1	35	-	90	15	7
Little Field ^{Shaw Croft} _{south West Corner of Great}	2	26	-	7	-	4	7
D ^o . D ^o . of Little D ^o .	3	15	-	7	-	5	10
Jewit Hill	3	-	-	2	-	6	0
Crot Head	2	-	-	7	-	3	6
33 Sheep Gates on Fell Close	-	-	-	3	-	4	19
12 Sheep Gates on Sulber	-	-	-	2/9	-	1	13
1 Horse Gate on Fox Moor	-	-	-	10	-	10	-
Park Pasture	8	1	32	16	6	15	2
Great Shaw Croft	4	-	20	30	6	3	9
Barn	-	-	-	-	-	4	-
Little Shaw Croft	2	3	3	30	4	3	-
	104	3	11	S	116	3	5
					5	16	2
					110	7	3

Procter Henry Self

	A	R	P	S	L	S	D
Out Park	207	3	-	3	31	3	3
Cow Pasture	42	-	4	8	16	16	-
Great Fall	4	-	-	20	4	-	-
Barn	-	-	-	-	-	3	-
Little Fall	4	3	7	14	3	7	1
Bent Hill Field	10	-	12	15	7	11	1
Barn	-	-	-	-	-	3	-
Fox Field	3	3	20	11	2	2	7
Goody Field	3	-	17	24	3	14	6
Long Field	4	1	13	24	5	2	5
Calf Rakes	1	2	11	7	-	10	1
Croft	1	-	1	27	1	7	2
Barn	-	-	-	-	-	4	-
Wood	10	-	-	No Value	-	-	-
	292	1	35	S	76	5	2
					3	16	3
					72	8	11

The above pays poor Rate to Ingleton and
Cunstable and Church Rate to Holton

Foster Pasture	26	1	4	11	14	9	-
					14	5	-
					13	4	7

Procter M^{rs} John Robinson

	A	R	P	S	£	s	d
House and Barn	-	-	-	-	2	4	-
Swine Side	7	2	-	13	4	17	6
Barn	-	-	-	-	-	4	-
Paddock	-	3	-	26	-	19	6
Jetty	3	-	-	30	4	10	-
Broad Field	6	1	-	12	3	15	-
Home Field	3	-	-	20	3	-	-
Nether Field	4	2	-	16	3	12	-
Barn	-	-	-	-	-	3	-
11 Cattle Gates on Cow Close	-	-	-	16	8	16	-
13 1/2 Cattle Gates on Carro	-	-	-	12	8	2	-
51 Cattle Gates on Cam End	-	-	-	4	10	4	-
Acres	25	-	-	£	50	7	-

2 10 0
47 16 8

Whaley John Edward Aray

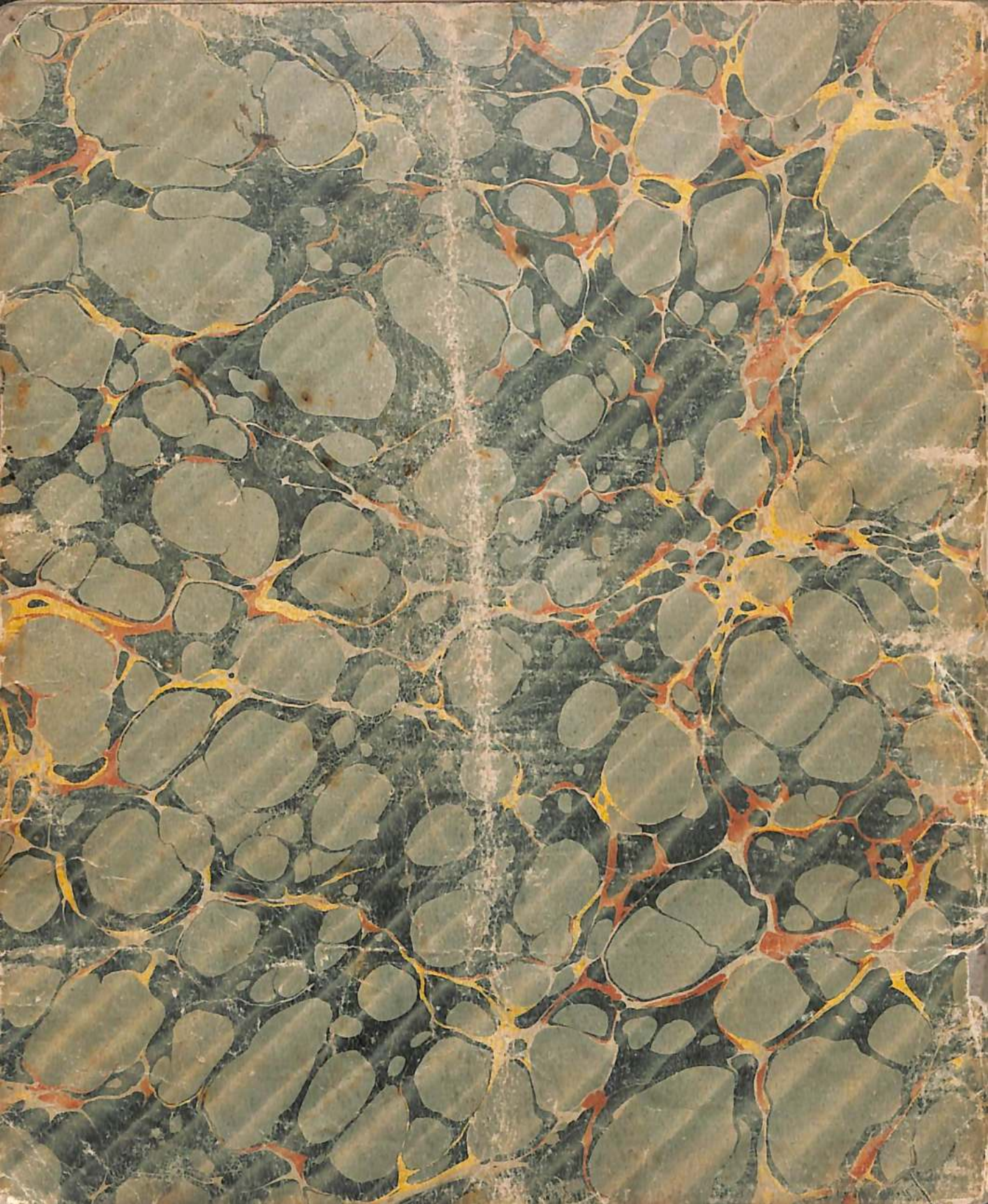
	A	R	P	S	£	s	d
House Stable & 2 Barns	-	-	-	-	8	9	-
Hill	1	2	11	40	3	29	-
Gilber Common	1	1	15	40	2	13	9
Time Hill Pasture	27	3	1	10	13	17	6
Middle Pasture	35	2	0	10	17	15	0
High Pasture	22	3	36	7	8	-	9
House Pasture	5	-	-	20	5	0	0
Brea	17	-	7	8	6	16	4
High Brea	1	-	32	2	-	2	4
Croft Head	2	2	24	34	4	10	1
Park	10	2	20	27	14	6	10
Beck Head	1	2	4	16	1	4	4
Barn	-	-	-	-	-	4	-
Caefe Paddock	1	1	18	40	2	14	6
High Common	3	3	25	42	8	4	-
Low Common	2	3	33	40	5	18	3
Broad Inq	9	3	17	27	13	6	1
Barn	-	-	-	-	-	7	-
Leys	10	2	37	27	14	9	8
Acres	156	0	0	£	131	2	2

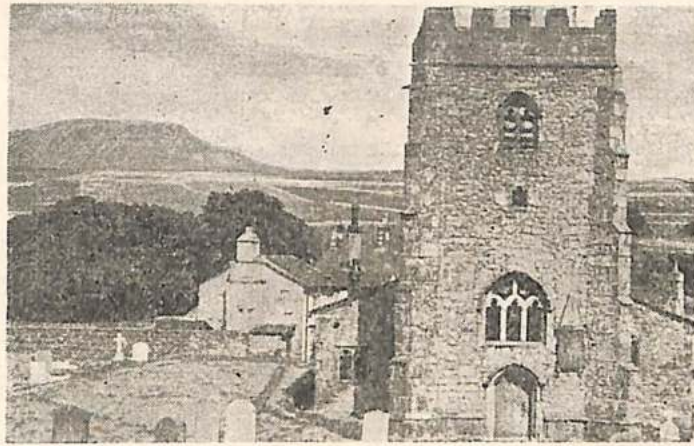
I The undersigned Declare this to be a just
and equal Valuation to the best of my knowledge

Stephen Hargreaves

June 6th
1838

Mr. Stephens	2	11/100
Mr. John -	2 ² / ₃	90
Mr. Whalley	2 ² / ₃	90





M. Asplem Tolken	4-1-14	Low
Chris Brown	75-3 10	Skewood House
Jas Drisdale	23 3 23	Selvic
Jas Foster	317 1 39	Newland House
Harlow Hunter	1-0 31	
Ann Haygarth	252 2 16	Selvic
Wood Metcalfe	93-0 3	"
Jonah Walker	151 1 39	Cross Hill
<hr/>		
Jonah Walker Tolken	16 0 0	
Thos Otter	136 0 18	Studfold
Sarah Spew Saw	11-0 4	Town End
Matthew P. Singer	7-1 37	
John Whadsey	220 2 3	