

Lingber Hill Burial Mound

It doesn't look like anything significant nowadays. Just a hump in a field, with a solitary small tree growing out of it. I guess that Indiana Jones wouldn't get over excited either? But it's there. And it's been there a long time!

If you take a walk on the road which leads from Hellifield to Otterburn you will be able to spot the location of this Burial Mound near Wenningber Farm. Look towards the railway and take note of a hump in the ground, with a small tree on the top. The burial mound or 'Barrow' is situated in a field traditionally named Crane Field Pasture, with Crane Field Beck on the right as you look towards the mound. Over the years, it has obviously depleted in size due to erosion and the trampling and grazing of the ground due to generations of sheep and cattle. The burial mound is located on the ordnance survey Map in an area known as Lingber - and the mound, or Barrow, may be shown under the icon 'Tumulus'.

further two 'Tumulus' markings between the railway and an area known as Thorny Dyke Hills. Obviously these are additional earthworks which are worthy of enough interest to be highlighted on the maps. They are thought to be from the Bronze Age period.

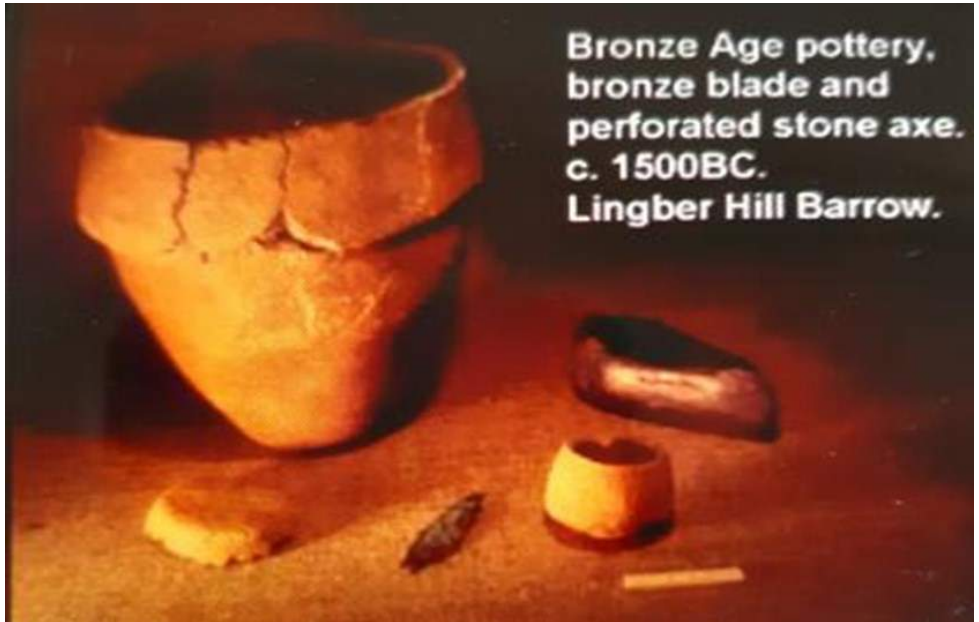
Our Barrow in question, commonly known as the Lingber Hill Barrow, was excavated in 1885 by Richard Hill Tiddeman 1842 – 1917, who also participated in the excavations at Settle Victoria Cave system and other sites of geological and archaeological interest. The barrow is a scheduled monument and was first listed on the 26th Oct 1973.

A closer study of the map will reveal a

The Otterburn area contains quite a good selection of prehistoric remains



Lingber Hill Barrow. To the left of Crane Field Laithe (Tumulus). Note the other two Tumuli located nearby.



Bronze Age pottery,
bronze blade and
perforated stone axe.
c. 1500BC.
Lingber Hill Barrow.

Picture courtesy of Malhamdale Local History Group

and earthworks. Generally considered to be from the Bronze Age period, the Barrow at Lingber Hill seems to be the only one that has been officially or formally excavated in the Otterburn

area. The contents of the Barrow included a Bronze Age beaker, a perforated stone axe, a bronze blade plus other remnants of pottery and bone fragments. Bowl Barrows are the



A closer view of the Barrow. The ground has been disturbed over the years and falls away to rear of the tree. The construction of the Barrow included many cobbles and small stones which are still present within the structure.



Lingber Hill Barrow with the tree marking the spot. As viewed from the road.

most numerous form of round barrow, and are funerary monuments dating from the late Neolithic period to the late Bronze Age. Most examples date from the period 2400 – 1500 BC. They can be isolated or grouped. In this case Lingber Hill Barrow is fairly isolated but within an area of similar burial sites within the Hellifield/

Otterburn area.

In further editions of the Herald I will take a look at other interesting historical sites within our area.

Ken Leak