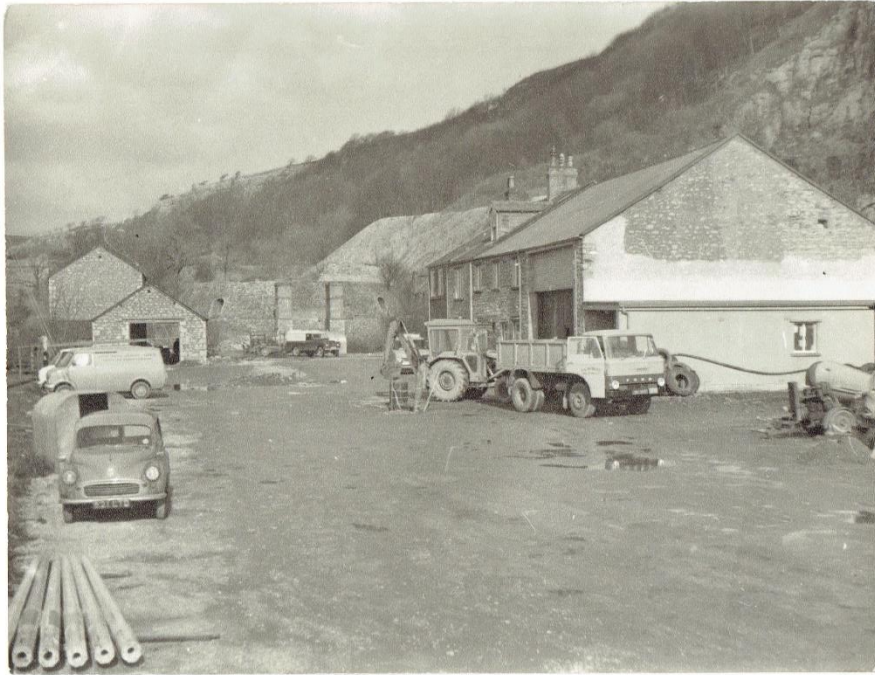


A collection of photographs taken by John Reid of the Settle Rural District Council Craven depot at the Hoffman kiln site in Langcliffe, 1972 to 2014.



CRAVEN DEPOT LANGCLIFFE S.R.D.C. 1972 (MARCH)



CRAVEN DEPOT LANGCLIFFE S.R.D.C. MARCH 1972.



TRADESMEN  
C. J. HARGREAVES  
A. McLENNON  
W. SMITH  
D. MCGOLDRICK  
J. REID  
G. BOWER  
R. SLATER  
J. TOMLINSON  
T. M. PAWSON  
C. T. POTTER  
C. PITTS

CRAVEN DEPOT NEW GARAGES BUILT BY TRADESMEN OF SETTLER R.D.C.



MAIN BUILDING



1972



CRAVEN DEPOT

1972



MAIN BUILDING 1/2 COTTAGE, WORKSHOPS, GARAGE WORKSHOP

135

1972

137



CRAVEN DEPOT



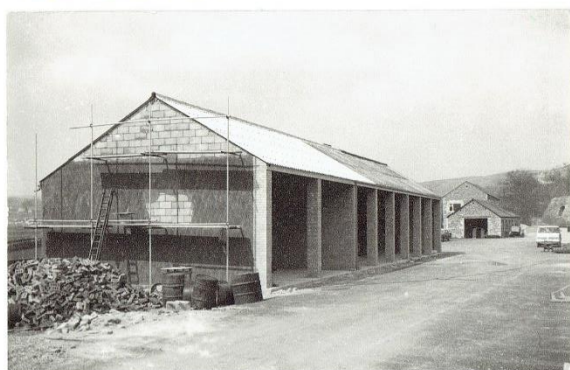
NEW GARAGES

1972



138

"HOFFMAN KILN" CRAVEN LANGCLIFFE 1974



NEW GARAGES

1973



CRAVEN DEPOT 1973





"SPACE MAN" J.R. LANGCLIFFE DEPOT 1989



LANGCLIFFE DEPOT OVER GROWN AUGUST 2014



LANGCLIFFE DEPOT OVER GROWN AUGUST 2014