

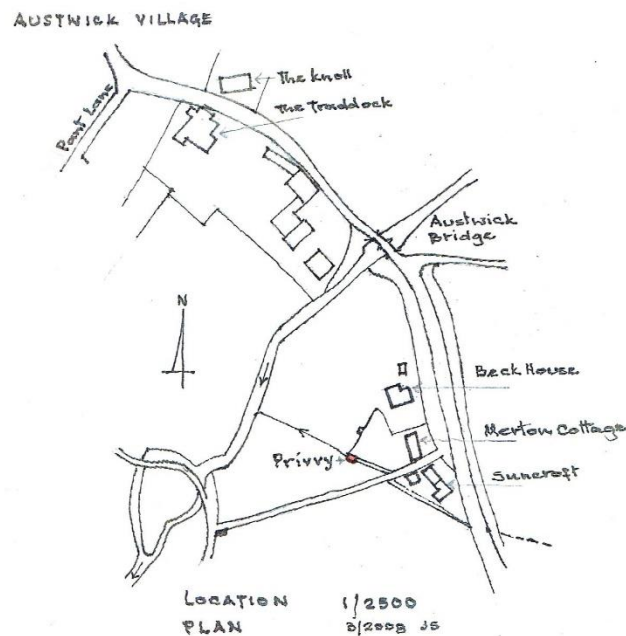
THE AUSTWICK PRIVY

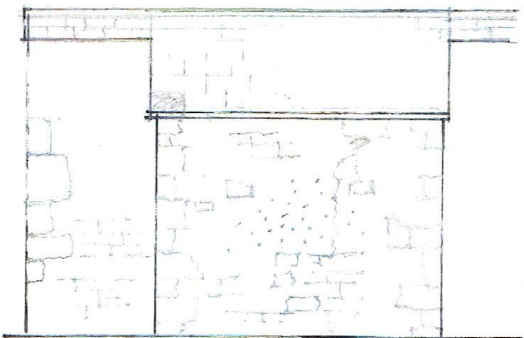
The privy is set over a small stream running along the edge of Beck House land and leads into Austwick beck which flows under Austwick bridge. It is now in the grounds of the Old Coach House (was Merton Cottage), formerly part of Beck House garden. There was also a privy associated with Suncroft next along the road.

Drawings have been made by Jill Sykes to show that entry was from Beck House garden and the convenience was a single-seater. A 19th century construction is supposed. Beck House has the initials TA and a date 1761 cut into a front door jamb. The house has had several stages of building from earlier times.

The privy is not a listed building although other examples in England have been listed – mainly Victorian, some two and three-seaters.

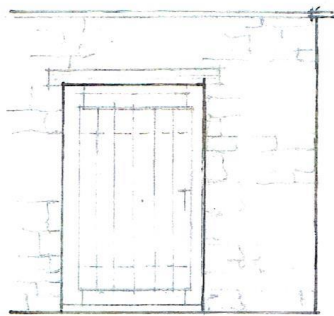
Privy is an old-fashioned term used more in the North of England and in Scotland, a possible derivation meaning private place.



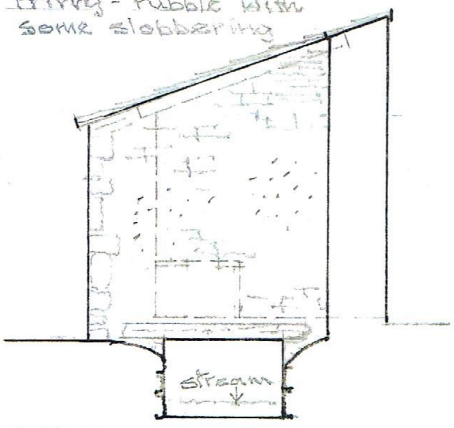


S.W. Elevation

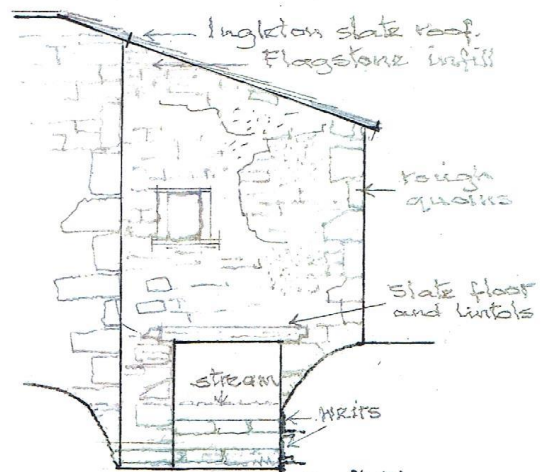
Garden Wall - well built
coursed rubble limestone
Privy - rubble with
some slopping



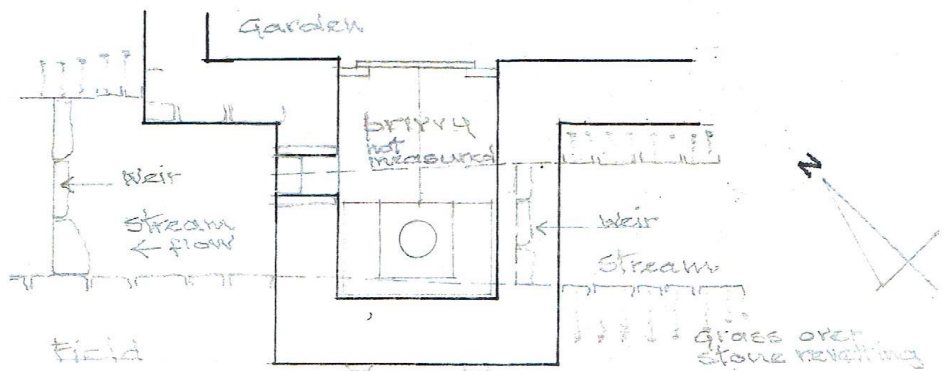
Garden Elevation
(not measured)



S.E. Elevation



N.W. Elevation



PLAN



C14? PRIVY - Merton Cottage - AUSTWICK
Formerly garden to Beck House.

1/50 ss
3.2008

