



Teachers

Dr. Margaret
Buckle (center)

Mrs. White

Mrs. Green

1955
Little Girls' High School





SETTLE GIRLS'



HIGH SCHOOL.

July.

1916



30539.

Panora Ltd.
Photo - CAMBURY 7779 London, W.C.1



SETTLE HIGH SCHOOL

June 1959

COUNTY COUNCIL OF THE WEST RIDING OF YORKSHIRE
EDUCATION COMMITTEE

Formal Opening of
SETTLE HIGH SCHOOL

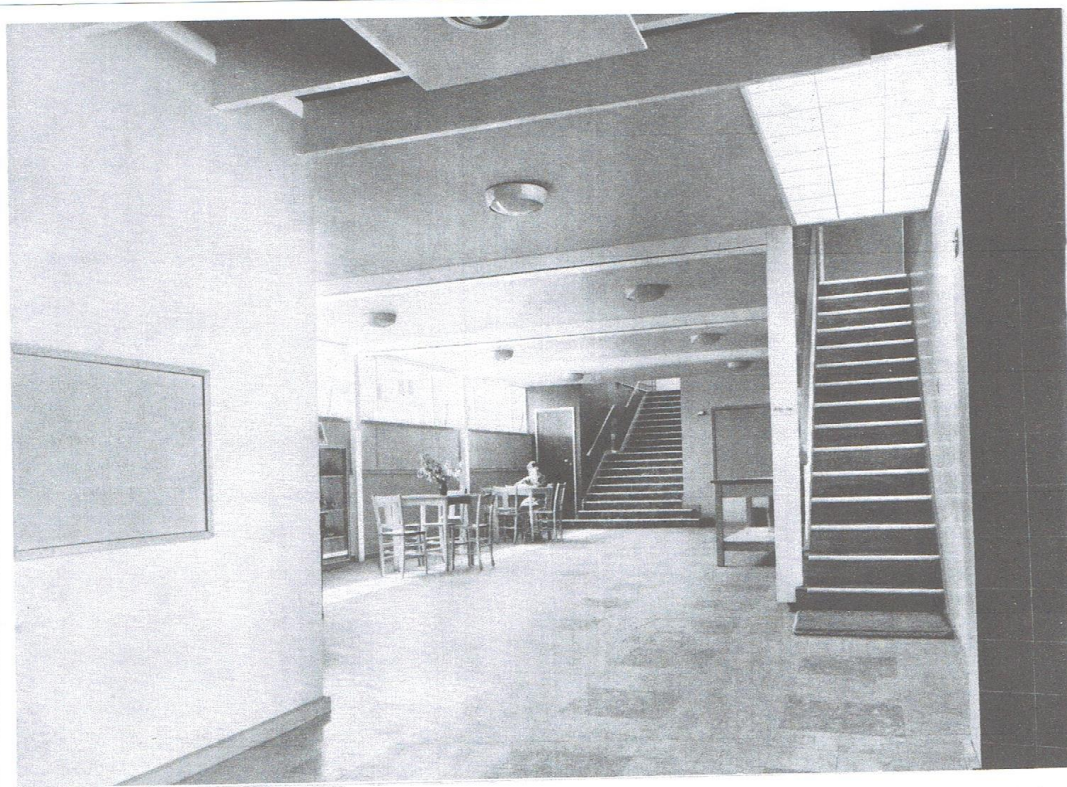
by County Alderman Major J. H. Hudson C.B.E. M.C. D.L.
Vice-Chairman West Riding County Council

on Saturday 6 June 1959

at 3 pm

Education Officer
A. B. CLEGG M.A.

Architects
JONES and STOCKS F.F.R.I.B.A.
in collaboration with
A. W. GLOVER F.R.I.B.A. County Architect



SERVICE OF DEDICATION

Hymn — O Worship the King

- | | | | |
|---|---|--|---|
| 1 O Worship the King,
All glorious above;
O gratefully sing
His power and His love:
Our shield and defender,
The ancient of days,
Pavilioned in splendour,
And girded with praise. | 2 O tell of His might,
O sing of His grace,
Whose robe is the light,
Whose canopy space;
His chariots of wrath
The deep thunder-clouds form,
And dark is His path
On the wings of the storm. | 3 This earth, with its store
Of wonders untold,
Almighty! Thy power
Hath founded of old;
Hath established it fast
By a changeless decree,
And round it hath cast,
Like a mantle, the sea. | 4 Thy bountiful care
What tongue can recite?
It breathes in the air,
It shines in the light;
It streams from the hills,
It descends to the plain,
And sweetly distils
In the dew and the rain. |
| 5 O measureless Might!
Ineffable Love!
While angels delight
To hymn Thee above,
Thy humbler creation,
Though feeble their lays,
With true adoration
Shall sing to Thy praise. | | | |

Dedicatory prayers offered by the Rev. E. A. J. Miller M.A Giggleswick

OPENING CEREMONY

The Chairman of the West Riding Education Committee
County Councillor C. T. Broughton
will introduce County Alderman Major J. H. Hudson C.B.E M.C D.L.
Vice-Chairman West Riding County Council

*

Major Hudson will declare the School open

*

A vote of thanks to Major Hudson will be proposed by Mr W. W. Thornber, Chairman of the Governing Body of Settle High School. The vote of thanks will be seconded by Mr M. C. Miles-Sharp, one of the Governors of the School

*

A vote of thanks to the Chairman, County Councillor C. T. Broughton, will be proposed by Mr B. Braithwaite-Exley, Vice-Chairman of the Governing Body of Settle High School

OPENING CEREMONY

★

Songs will be sung by the School Choir

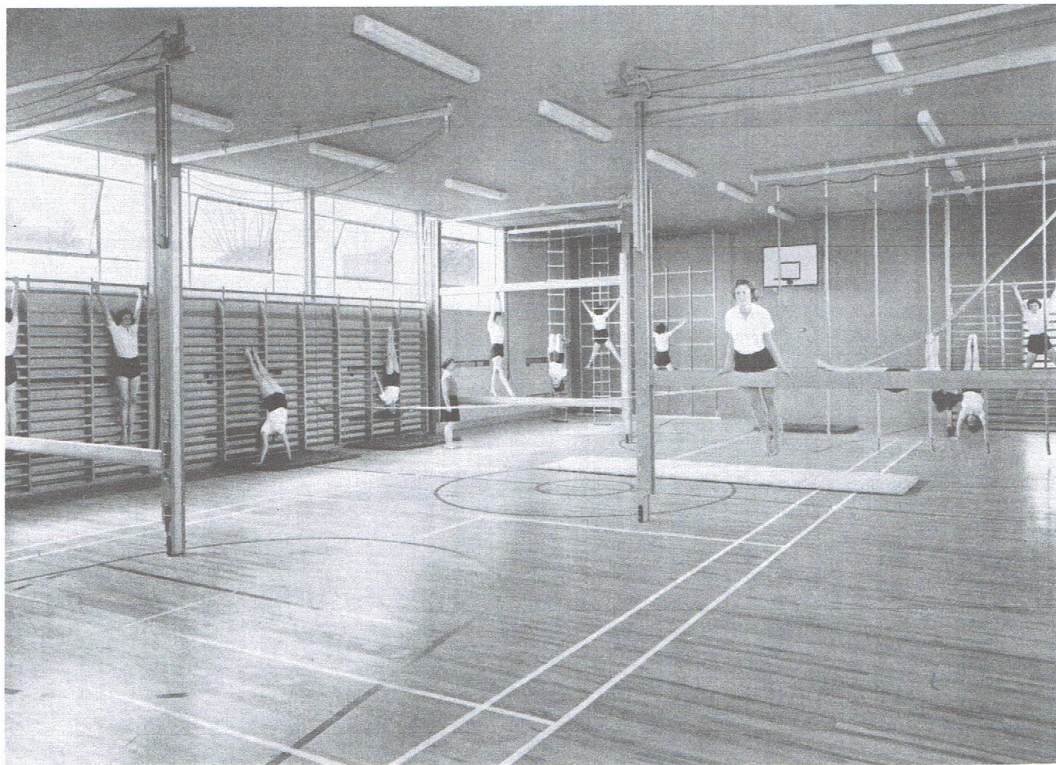
★

Hymn — Praise, my soul, the King of heaven

- | | |
|---|--|
| 1 Praise, my soul, the King of heaven,
To His feet thy tribute bring;
Ransomed, healed, restored, forgiven,
Who like thee His praise should sing?
Praise Him! Praise Him!
Praise the everlasting King. | 3 Father-like He tends and spares us;
Well our feeble frame He knows;
In His hands He gently bears us,
Rescues us from all our foes:
Praise Him! Praise Him!
Widely as His mercy flows. |
| 2 Praise Him for His grace and favour
To our fathers in distress;
Praise Him, still the same for ever,
Slow to chide and swift to bless,
Praise Him! Praise Him!
Glorious in His faithfulness. | 4 Angels, help us to adore Him;
Ye behold Him face to face;
Sun and moon, bow down before Him;
Dwellers all in time and space,
Praise Him! Praise Him!
Praise with us the God of grace. |

Final prayer and Benediction offered by the Rev. G. A. Moffat
Minister of Zion Congregational Church Settle

THE NATIONAL ANTHEM



SETTLE HIGH SCHOOL

Headmistress — Miss J. W. Evans B.A

The original Settle Girls High School has been extended into a three form entry secondary school, with VIth form, for 480 boys and girls of all abilities. There is special provision for Further Education and Youth activities in the form of a Further Education Wing.

The site is on a busy trunk road but the access, which is near the bridge, has clear sight lines.

Owing to flooding and scarcity of playing-fields area, the existing level playing-field has been left clear of any buildings. The planning problem was to develop the upper site and to connect this to the existing buildings, whilst still retaining in position—but adapting—the original dining room.

On the upper site a two-storey block of laboratories and domestic-science rooms has been planned, together with a single-storey classroom block. On that site are also the rural-study rooms, with direct access to the garden, the gymnasium and the assembly hall. The connection to the lower level has been made by the series of changing floor levels which accommodate respectively the staff-rooms, entrance hall, cloak-rooms and Further Education Wing.

The buildings have been designed to embrace the natural bowl of the site, overlooking the fields and the river with a distant view over the bridge and Settle to the

Fells. The buildings are linked to the site with paths, steps and paved areas. The original boundary wall at the side of the road has been lowered and a grass lawn has been formed between the road and the new buildings.

The materials blend with the accepted building materials of the Dales and the general shapes of the buildings have been designed sympathetically to the sturdy farm buildings of the area. The materials used are stone, limestone spatterdash, which is traditional to this area, together with cedar-boarding. The roof is of felt laid to slight slopes and the building has a steel frame.

She Stoops to Conquer

