

The Grammar School of King Edward VI.

OF GIG

FOUNDED 26TH

New Scheme approved by the Council on the 9th

THE GOVERNORS

THE LORD EDWARD CAVENDISH, M.P. HECTOR CHRISTIE, Esq., Langcliffe Pla RALPH ASSHETON, Esq., Downham Hal JOHN BIRKBECK, Esq., Anley, Settle. JOHN BRIGG, Esq., Kildwick Hall, Leeds REV. JOHN EDMOND COULSON, M.A., I REV. WM. HENRY COULTHURST, LL.B., THOMAS FENWICK FENWICK, Esq., B HIS HONOUR JUDGE INGHAM, Marton WALTER MORRISON, Esq., M.P., Tarn H FRANCIS SHARP POWELL, Esq., M.P., CHARLES SAVILE ROUNDLELL, Esq., 16, PROFESSOR SCHUSTER, Ph.D., F.R.S., REV. H. I. SWALE, M.A., Ingfield, Settle. THE RIGHT HON. SIR UGHTRED J. KAY-Hall, Burnley. THOMAS EDWARD YORKE, Esq., Bewerl

CLERK TO THE WILLIAM HARTLEY

HEAD

REV. GEORGE STYLE, M.A., late F

ASSISTANT

Upper

WILLIAM MARSHALL WATTS, D.Sc. (Lor DOUGLAS RÜCKER SMITH, M.A., I EDWARD PEAKE, M. REV. ARTHUR CROSS, M.A. JOHN ROSINDALE WYNNE-EDWARDS, I BASIL HEDLEY, B.A., ARTHUR THORNTON, B.A., late Sc STEPHEN P. SMITH, Esq., of WALTER HENRY CHITTY, B.A., late

Junior

PHILIP BEARCROFT, M. ARTHUR BR GIFFORD BROMLEY

DRAW

REV. ARTHUR C Certificated under the Committe

MUSIC

CHARLES FREDERICK HYDE, Esq., Organis MANNOCK, Esq.; JOHN

GYMNASTICS

SERGEANT-MAJOR

For Mathematics, Science, Latin, Greek, French and German, the boys are arranged in Sets, which are, to a great extent, distinct from the division into Forms.

Physical Science.—Chemistry and the various branches of Physics (including Electricity and Magnetism) are part of the ordinary work of the Upper and Middle School; the work is founded on instruction in Practical Chemistry and Practical Physics.

The Laboratories (Chemical and Physical) now largely extended, are well provided with apparatus for experimental work in physical science.

Drawing, artistic and technical, forms part of the regular work of the lower Forms.

Music and Singing are encouraged throughout the School.

Preparation for the Army.—Boys who wish to compete for admission to the R.M. Academy, Woolwich, the R.M. College, Sandhurst, or the Royal Naval College, Osborne, or the Special Entry for Naval Cadets, should give notice as early as possible to the Head Master. He will make special arrangements for their work.

Examinations.—The School is examined annually by the Oxford and Cambridge Schools Examination Board. The Examiners report to the Governors on the proficiency of the scholars and on the position of the School as regards instruction and discipline. Other examinations are conducted by the Masters of the School.

Inspection.—The School has recently been inspected by the Board of Education, and has received the formal recognition of the Army Council. It has also been recognised, after inspection by the Joint Board of the College of Physicians and Surgeons, as a School at which the first year's course in Physics and Chemistry for the medical degree may be taken.

Admission.—Boys are admitted in January, May, and September. Application for admission to the School must be made to the Head Master, upon a printed form, which he will supply to all applicants. There is a Registration Fee of £1 which is in no case recoverable.

The examination for admission is conducted by means of the Common Entrance Examination, which takes place towards the end of the term previous to that for which entry is made. It is therefore expedient to enter at least one term beforehand, though chance vacancies may be afterwards filled.

In the case of a boy who has already been at School, a certificate of good conduct is required from the School he is leaving.

Boys should enter the School at 13 years of age and no boy may remain in the School after the end of the School year in which he attains the age of nineteen, except by permission of the Head Master.

SCHOOL BUILDINGS.

The School Buildings are close to the Boarding House. Besides the Big School there are fourteen admirable Class Rooms and Lecture Rooms, so that every Form works under the most favourable conditions: special attention has been paid to lighting, warming, and ventilation. The Library, covered Play-ground and Gymnasium are also in this building. The other buildings include a detached Sanatorium, covered Fives Courts, two Workshops, Music Rooms, Swimming Bath, and Museum.

The Boarding Houses are under the control and management of the Head Master, who is aided by Resident Assistant Masters. The present 'Houses' are 'Carr,' Mr. Harris; 'Paley,' Mr. Haswell; 'Nowell,' Mr. Grant; 'Shute,' Mr. Byron Scott. Parents who wish their sons placed in any particular 'House' in the School are asked to make their wish known as early as possible. Every boy shares a Study, and in the Dormitory he has a separate cubicle. Boarders have ample opportunity of obtaining additional help in their work, and younger boys prepare their evening work under a Master's supervision.

The Medical Officer of the School visits the Boarding Houses daily so that he may see not only boys who are ill, but any boy who requires special supervision. Each boarder is charged one guinea a term for medicine, nursing by trained nurses, the use of the Sanatorium and all Medical Attendance, except fees for consultations.

The School Library contains about 4,000 volumes and is rapidly increasing; it is open to the boys for reading and reference; most of the books may be taken out by any boy.

The Museum contains the interesting Collection of Cave Remains presented by the Victoria Cave Excavation Committee, and good collections of Minerals, Fossils, Birds, Eggs, &c. Contributions are invited from boys and their friends.

3 Oct 1870. Ages last Birth day.

mar School.

HOOL.

II.

rsall, ma.

s

er

rsall, mi.

rd, ma.

ton

am

ma.

aw, ma.

III.

n, mi.

g

ornthwaite

, ma.

rthy, ma.

son, ma.

ield, ma.

all, tert.

son, mi.

ma. Oct 1870

aw, mi. Oct 1870

, ma.

at, ma. Oct 1870

12 Robinson

12 Greenwood

12 Pierson

13 Gerrish

OF GIG

FOUNDED 26th

New Scheme approved by the Council on the 9th

THE GOVERNORS

THE LORD EDWARD CAVENDISH, M.P.
HECTOR CHRISTIE, Esq., Langcliffe Place
RALPH ASSHETON, Esq., Downham Hall
JOHN BIRKBECK, Esq., Anley, Settle.
JOHN BRIGG, Esq., Kildwick Hall, Leeds
REV. JOHN EDMOND COULSON, M.A.,
REV. WM. HENRY COULTHURST, LL.B.
THOMAS FENWICK FENWICK, Esq., E
HIS HONOUR JUDGE INGHAM, Marton
WALTER MORRISON, Esq., M.P., Tarncliffe
FRANCIS SHARP POWELL, Esq., M.P.,
CHARLES SAVILE ROUNDLELL, Esq., 10
PROFESSOR SCHUSTER, Ph.D., F.R.S.,
REV. H. I. SWALE, M.A., Ingfield, Settle.
THE RIGHT HON. SIR UGHTRED J. KAY
Hall, Burnley.
THOMAS EDWARD YORKE, Esq., Bewer

CLERK TO THE GOVERNORS

WILLIAM HARTLE

HEAD

REV. GEORGE STYLE, M.A., late

ASSISTANT

Upper

WILLIAM MARSHALL WATTS, D.Sc. (Lond.)
DOUGLAS RÜCKER SMITH, M.A.,
EDWARD PEAKE, M.A.
REV. ARTHUR CROSS, M.A.
JOHN ROSINDALE WYNNE-EDWARDS,
BASIL HEDLEY, B.A.
ARTHUR THORNTON, B.A., late
STEPHEN P. SMITH, Esq.,
WALTER HENRY CHITTY, B.A., late

Junior

PHILIP BEARCROFT, M.A.
ARTHUR BIRKBECK,
GIFFORD BROMLEY

DRAWING

REV. ARTHUR
Certificated under the Committee

MUSIC

CHARLES FREDERICK HYDE, Esq., Organist
MANNOCK, Esq.; JOHN

GYMNASTICS

SERGEANT-MAJOR

The Swimming Bath (in which the water is 60 feet by 26 feet and from 6 feet to 3 feet deep) is close to the School, within a covered building which is warmed. The water also is warmed to 70° F. Beginners are carefully taught to swim.

The Gymnasium (built by subscription in 1886 at a cost of about £1,200), is used by the whole School under adequate superintendence and instruction.

The Joiner's Shop is in the large room of the Old School. Systematic instruction is given by a well-qualified Joiner.

A well-fitted **Metal Workshop** has recently been added to the equipment of the School. Boys may enter the workshop after attaining a certain standard of proficiency in woodwork. The course includes the simple processes of engineering workshop practice, such as forging, tool-making, and the use of the screw cutting lathe; it is carried out under the supervision of a practical engineer.

The School Societies include Literary Debating, Photographic, and Natural History Societies. For the latter the neighbourhood, with its rare birds and flowers and its limestone Caves, offers peculiar opportunities.

Games, &c.—Much attention is given to physical development. Besides Swimming, Gymnastics, and Drill, all boys, not hindered by health, are expected to take part regularly in Cricket, Football, and other games. The Playing Fields, which are about forty acres in extent, adjoin the School premises.

Materials for games, School hats and caps, &c., may be obtained at the Athletic Shop.

The Officers' Training Corps is more than 150 strong, under the command of Capt. A. C. Dyer.

Covered Playground.—When the weather prevents out-door games there is a large Covered Playground (100 feet by 50 feet) available.

Sanitary Provisions: Sanatorium.—The School Sanatorium is separated from the other buildings, and isolated. Cases of contagious disease are immediately removed there. There are also wards in the Boarding House for doubtful cases.

Drainage.—The system of drainage is in accordance with the best principles of sanitary science. The plan was made and its execution approved by experienced inspectors of the Local Government Board.

The system is inspected every month and reported on to the Governors.

The **Water** supplied to the School comes direct to the School premises from a copious and excellent spring belonging to the Trust.

PAYMENTS.

School Fees.—The Entrance Fee for Boarders is £3, and for Day Boys, £1.

Annual Fees.—	Tuition.	Boarding.	Total per Annum
Boarders ..	£45	£81	£126
Day Boys ..	£30		

Day Boys born in or resident for 3 years in the Ancient Parish of Giggleswick—
£14 2s.

No extra charge is made for the Gymnasium, Joiner's Shop, Swimming Bath, ordinary Laundry, Experimental Science, Drawing, Library, Study, Games, or Luggage Carting. The only necessary extra is one guinea per Term for Medical Attendance, &c.

Method of Payment.—Payments must be made terminally in advance. They are made to the Bank of Liverpool and Martins Limited, Settle, to the credit of the Governors. A statement is forwarded before the commencement of each term and should be enclosed with the payment to the Bank.

Music.—Instruction in Instrumental Music, Piano or Violin, is given at a charge of three guineas a term; Organ four guineas a term. There is an excellent Organ in Big School.

Private Tuition in any special subject can be given, but only at the request of the Parent and with the consent of the Head Master. The fee charged will be at the rate of two guineas each hour a week per Term, the total fee not to exceed six guineas per term in any one case.

3 Oct 1870.

Ages last Birth day.

SCHOOL.

II.

rsall, ma.

s

er

rsall, mi.

d, ma.

ton

am

ma.

law, ma.

III.

n, mi.

g

rnthwaite

, ma.

rthy, ma.

son, ma.

eld, ma.

all, tert.

son, mi.

na. Oct 1870

w, mi. Oct 1870

, ma.

14 ... Oct 1870

12 Robinson

12 Greenwood

12 Pierson

13 Gerrish

The Grammar School of Giggleswick

OF GIGGLESWICK

FOUNDED 26th

New Scheme approved by the Council on the 9th

THE GOVERNORS

THE LORD EDWARD CAVENDISH, M.P.
 HECTOR CHRISTIE, Esq., Langcliffe Pla
 RALPH ASSHETON, Esq., Downham Ha
 JOHN BIRKBECK, Esq., Anley, Settle.
 JOHN BRIGG, Esq., Kildwick Hall, Leed
 Rev. JOHN EDMOND COULSON, M.A., I
 Rev. Wm. HENRY COULTHURST, LL.B
 THOMAS FENWICK FENWICK, Esq., B
 HIS HONOUR JUDGE INGHAM, Marton
 WALTER MORRISON, Esq., M.P., Tarn E
 FRANCIS SHARP POWELL, Esq., M.P.
 CHARLES SAVILE ROUNDELL, Esq., 16
 PROFESSOR SCHUSTER, Ph.D., F.R.S.,
 Rev. H. I. SWALE, M.A., Ingfield, Settle.
 THE RIGHT HON. SIR UGHTRED J. KAY
 Hall, Burnley.

CLERK TO THE
 WILLIAM HARTLEY

HEAD

Rev. GEORGE STYLE, M.A., late

ASSISTANT

Upper

WILLIAM MARSHALL WATTS, D.Sc. (L
 DOUGLAS RÜCKER SMITH, M.A.,
 EDWARD PEAKE, M
 Rev. ARTHUR CROSS, M.A
 JOHN ROSINDALE WYNNE-EDWARDS,
 BASIL HEDLEY, B.A.,
 ARTHUR THORNTON, B.A., late S
 STEPHEN P. SMITH, Esq.,
 WALTER HENRY CHITTY, B.A., la

Junior

PHILIP BEARCROFT, M.
 ARTHUR B
 GIFFORD BROMLE

DRAW

Rev. ARTHUR
 Certificated under the Commit.

MUSIC

CHARLES FREDERICK HYDE, Esq., Organ
 MANNOCK, Esq.; JOHN

GYMNASTICS

SERGEANT-MAJ

SCHOLARSHIPS and EXHIBITIONS.

Scholarships and Exhibitions.— Foundation Entrance Scholarships, are offered annually in June. The Governors also intend to establish, when the state of funds admits, one or more Exhibitions tenable at some University or other place of liberal education.

There are a number of special prizes offered annually:—The Style Prize for Mathematics; The Ingram Divinity Prize; The Allan Science Prize; The Turnbull Science Prize; The Waugh English Literature Prize; as well as the ordinary School Prizes.

There are two Quatercentenary Scholarships which are given whenever they fall vacant.

County Major Scholarships tenable at Universities may be competed for under the regulations of the Education Authority of which the boy's parents are ratepayers.

Boys educated for two years at Giggleswick have a preference to Carr Exhibitions, of £50 per annum, at Christ's College, Cambridge.

Giggleswick has the privilege of sending Candidates to compete for the Hastings Scholarships, value £100 a year for five years, at Queen's College, Oxford, and for the Akroyd Scholarship.

Vacations, &c.—The Summer Vacation commences on the Wednesday before the first Monday in August, and lasts seven weeks; the Winter Vacation commences shortly before Christmas, and lasts four weeks; the Spring Vacation, of four weeks commences early in April.

A Term's notice must be given to the Head Master, in writing, before the removal of any pupil, or a Term's fees are charged.

The School is about a mile from the Settle and Giggleswick Stations, on the Midland Railway. Communication is easy with London and the large towns of Yorkshire and Lancashire, and with Scotland, by way of Carlisle.

All communications on School matters should be addressed to The Head Master, Giggleswick School, Settle, Yorkshire.

March, 1923.

J. W. LAMBERT AND SONS, PRINTERS, SETTLE

3 Oct-1870.
 Ages last Birth day.

Giggleswick Grammar School.

UPPER SCHOOL.

I.

17 Benson
 17 Bolland
 16 Harvey
 15 Yarrow

II.

14 Gomersall, ma.
 13 Delves
 Procter
 13 Gomersall, mi.
 14 Swale
 12 Geldard, ma.
 14 Hamilton
 13 Whittam
 11 Ellis, ma.
 13 Lord
 14 Brayshaw, ma.

III.

10 Howson, mi.
 14 Leeming
 12 Haythornthwaite
 14 Watson, ma.
 14 Punch
 15 Kenworthy, ma.
 16 Wilkinson, ma.
 14 Butterfield, ma.
 12 Gomersall, tert.
 11 Wilkinson, mi.
 14 Clark, ma. Oct 1870
 12 Gill
 11 Brayshaw, mi. Oct 1870
 14 Hartley, ma.
 14 Wildman, mi. Oct 1870
 12 Robinson
 12 Greenwood
 12 Pierson
 13 Gerrish

The Grammar School

OF GIGGSWICK

FOUNDED 267

New Scheme approved by the Council on the 9th

THE GOVERNORS

THE LORD EDWARD CAVENDISH, M.P.
HECTOR CHRISTIE, Esq., Langcliffe Park
RALPH ASSHETON, Esq., Downham Hall
JOHN BIRKBECK, Esq., Anley, Settle.
JOHN BRIGG, Esq., Kildwick Hall, Leeds
REV. JOHN EDMOND COULSON, M.A.,
Rev. Wm. HENRY COULTHURST, LL.B.
THOMAS FENWICK FENWICK, Esq., F.R.S.
HIS HONOUR JUDGE INGHAM, Marton
WALTER MORRISON, Esq., M.P., Tarncliffe
FRANCIS SHARP POWELL, Esq., M.P.,
CHARLES SAVILE ROUNDELL, Esq., M.P.,
PROFESSOR SCHUSTER, Ph.D., F.R.S.,
Rev. H. I. SWALE, M.A., Ingfield, Settle.
THE RIGHT HON. SIR UGHTRED J. KAY
Hall, Burnley.
THOMAS EDWARD YORKE, Esq., Bewerley

CLERK TO THE GOVERNORS
WILLIAM HARTLEY

HEAD

REV. GEORGE STYLE, M.A., late

ASSISTANT

Upper

WILLIAM MARSHALL WATTS, D.Sc. (L)
DOUGLAS RÜCKER SMITH, M.A.
EDWARD PEAKE, M.A.
REV. ARTHUR CROSS, M.A.
JOHN ROSINDALE WYNNE-EDWARDS
BASIL HEDLEY, B.A.
ARTHUR THORNTON, B.A., late
STEPHEN P. SMITH, Esq.,
WALTER HENRY CHITTY, B.A., late

Junior

PHILIP BEARCROFT, M.A.
ARTHUR B.
GIFFORD BROMLEY

DRAUGHTSMAN

REV. ARTHUR
Certificated under the Commi

MUSIC

CHARLES FREDERICK HYDE, Esq., Organist
MANNOCK, Esq.; JOHN

GYMNASTICS

SERGEANT-MAJOR

SCHOLARSHIPS and Exhibitions

Scholarships and Exhibitions are offered annually. Scholarships are offered annually to establish, when the state of the country allows, Exhibitions tenable at some University or other place of education.

There are a number of special Scholarships, such as the Style Prize for Mathematics; the Allan Science Prize; The Turnbull English Literature Prize; as well as the

There are two Quatercentenary Scholarships, which are offered whenever they fall vacant.

County Major Scholarships are offered to boys who have competed for under the regulations of the Education Act of 1902, of which the boy's parents are responsible.

Boys educated for two years at Carr Exhibitions, of £50 per annum, are offered at Cambridge.

Giggleswick has the privilege of sending boys to the Hastings Scholarships at Queen's College, Oxford, and to the

Vacations, &c.—The Summer Vacation commences on Wednesday before the first Monday in August; the Winter Vacation commences on the first Monday in November and lasts four weeks; the Spring Vacation commences early in April.

A Term's notice must be given before the removal of any pupil.

The School is about a mile from Giggleswick Station, on the Midland Railway, and is accessible from London and the large towns in the North of England with Scotland, by way of Carlisle.

All communications on School business should be sent to The Head Master, Giggleswick.

March, 1923.

J. W. LAMBERT AND

PREPARATORY SCHOOL.

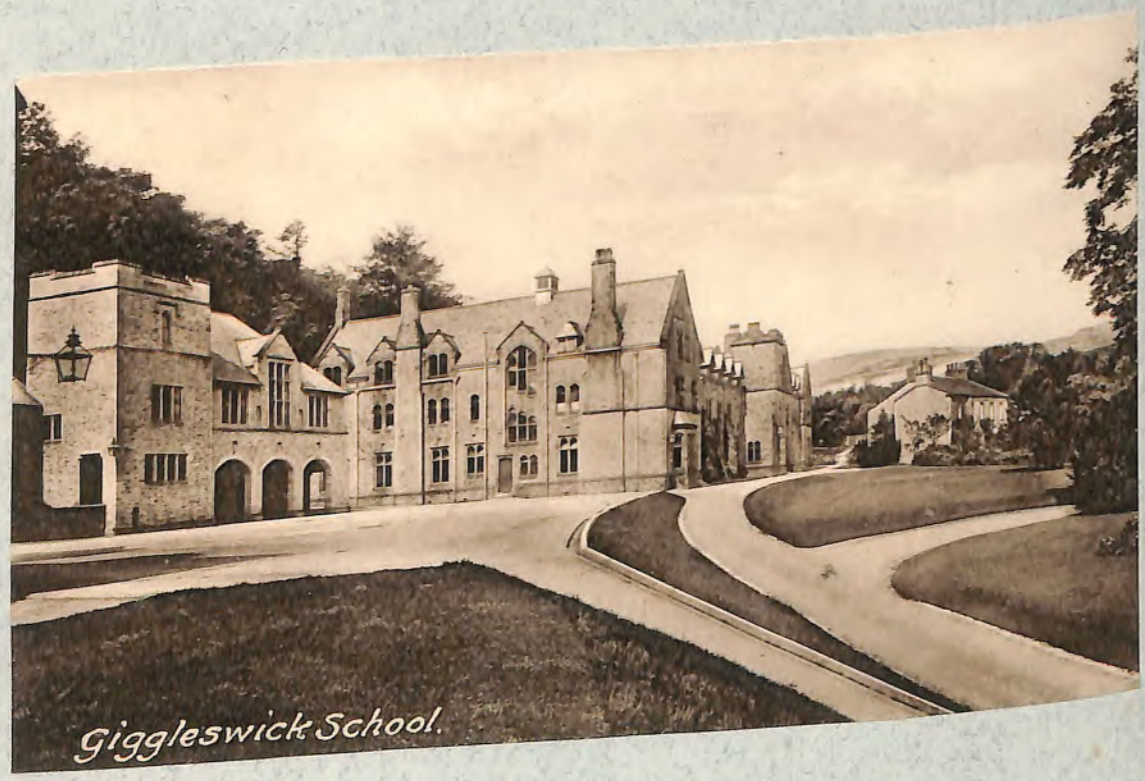
I.

- 12 Clark, mi.
12 Hunter
Holt
13 Boyd
12 Metcalfe
13 Wilson
11 Geldard, mi.
13 Hartley, mi.
14 Clegg
15 Armistead

II.

- 13 Hudson
10 Kenworthy, mi.
11 Butterfield, mi.
11 Maudsley
10 Waller
10 Watson, mi.
9 Hartley, ter.
7 Ellis, mi.

Seal of School,
from embossed
metal plaque.



Giggleswick School.

[Reprinted from "Giggleswick Chronicle," July, 1925.]

THE SCHOOL SEAL.

WE have recently received the following letter from the Rev. G. A. A. Wright, in which he offers an ingenious suggestion concerning the School Seal.

SIRS,
The origin of the School Seal was in my day an unsolved problem. I do not know if it remains so still, but if so the following facts may contribute to its solution.

Before the Dissolution of the Monasteries the Rectory of Giggleswick was impropriated to the Priory of Durham and the Priory appointed to the living.

Among the endowments confirmed by Henry VIII to the new Chapter of Durham Cathedral were the tithes of lamb and hay in *Bowleden* (Browne Willis's "Survey," vol. 1, p. 232.)

It is tempting to suppose that these tithes in Bowleden endowed a Prebend at Durham; that some holder of this Prebend was appointed to the Vicarage of Giggleswick and Headmastership of the School; that he brought the Seal with him and left it at the School.

The problem is not however quite as easy as that. The tithes of lamb and hay would hardly be enough to endow a Prebend: other endowments may have gone with it and the stall taken its name from the largest item.

Since the Reformation the Prebends of Durham have been known by number and not by name; I have no information as to what was the case before the Reformation.

Finally, the Rev. H. D. Hughes, sub-librarian of Durham Cathedral, believes that Browne Willis's "Bowleden" is a misprint for "Bowsden" which he thinks is the village of Bowsden, near Ancroft, in Northumberland.

Nevertheless some one better equipped for the pursuit than I am may think this clue worth following.

Yours faithfully,
G. A. A. WRIGHT, (O.G.).



Charter of Edward II, granted to Giggleswick School.

Seal of School,
from embossed
Metal plaque.

We passed on this letter to Mr. Brayshaw, who is the greatest authority on the history of the School, and he has replied to our inquiry as follows:—

"I had hoped to be in a position to express a definite opinion as to the very interesting theory Mr. Wright propounds respecting the origin of the seal, but I have not access to many books of reference here, and I have not been able to run down to Leeds to hunt up sundry works there. But, speaking somewhat superficially, I hardly think the theory that some prebendary of Durham, who had been appointed Vicar of Giggleswick and Headmaster of the School, brought the seal with him, will hold water. So far as I know, the Prior of Durham, although he nominated the Vicar, had nothing to do with the appointment of the Master. The list of holders of the latter office during the first half of the 16th century is not complete, but I take it that the priest of the Carr Chantry also acted as Schoolmaster, and that neither Tennant, Percy nor Newton, who were Vicars between 1493 (soon after which date the School was founded) and 1545 (when the monasteries had been dissolved) acted as Headmaster.

At the dissolution the various religious houses handed over to the King's Commissioners all the deeds, muniments, plate, seals, charters, &c., in their possession, and the accumulation of such objects must have been enormous, although in many cases the documents were allowed to remain *in situ* for a time. But the seal of the Prebend of Bulidon was probably amongst the things handed over, and as it would have no intrinsic value, no special care would be taken of it.

In 1553 King Edward VI. granted the School a Royal Charter, and a Board of Governors, constituting a corporate body, was formed and they were empowered to have a common seal ("*habeant commune sigillum*"). There was thus an interval between the dissolution and the date when a seal would be used. I therefore think it more probable that Bulidon was a prebendary's stall in the priory or collegiate church of North Acaster, out of whose confiscated property the School was endowed.



Giggleswick

More than 40 years ago I participated in a correspondence in the London weekly "Notes and Queries," respecting the origin of the seal, but could not learn anything definite, but now that Mr. Wright has put forward his fascinating suggestion, I trust that further information may be forthcoming.

I wonder how many boys have ever seen this old relic. It is an ordinary looking brass seal, some two inches high by one and a third broad, and, together with the Charter, is one of the most treasured possessions of the School. The bunch of keys giving access to these is the emblem of office of the Clerk to the Governors. Twenty-four years ago I had the honour to be appointed to that post and the Chairman ceremoniously handed over the keys to my custody, and when (twenty-one years later) ill-health compelled me to resign, I returned them to the Chairman just as ceremoniously. They comprise a key to open the door of the bell-tower in the old school, one to the door of the Museum, then the next opens a door in the wall of the room which used to be the School Library and masters' room. Two large and curious keys open the safe door, a final one opens an interior partition, and the seal is exposed. But, lest the Clerk should take a fancy to wear it on his watch-chain, it is fastened by a stout chain to the lining of the safe!

Some 20 years ago Messrs. Fisher and Ludlow, Albion Works, Rea Street, Birmingham, made an admirable reproduction of the seal on a metal shield, and the other day I noticed one on the walls of one of the rooms of the Hostel. I should have liked to see more specimens ornamenting the studies, as they form splendid souvenirs of one's schooldays. One of them occupies an honoured position on the walls of my son's "shack" in Canada, as is fitting for one who is proud to be descended from a long line of O.G.'s."

Mr. Charles Johnson, of the Public Record Office, to whom we also submitted Mr. Wright's letter, writes—"The place he suggests seems now to be known as Bowsden (in Lowick). The suggestion is very ingenious and would perhaps account for our failure to find any



Charter of Edward VI., granted to Giggleswick School.

Seal of School,
from embossed
Metal placque.

prebend of Bulidon. The objection is that Henry VIII's prebends, which I think continued in existence until the foundation of Durham University, were known by their numbers and are so specified in the Letters Patent of Foundation of 1541. The foundation provides that they shall be worth £32 : 8 : 10 each, but does not assign specified lands to each prebend."

By reference to Crockford's Clerical Directory we find that the Vicarage of Lowick which he mentions is in the gift of the Dean and Chapter of Durham, so that there might possibly be some connection between Giggleswick and Bowsden, as both were evidently in the hands of the same patrons. It does not seem necessary to assume that some one person was both Vicar and Master of the School at Giggleswick. Cases of pluralism were very common in the pre-reformation times and the possibilities of combination are almost endless. It may have been that one man held both livings, Lowick and Giggleswick. Perhaps someone on the spot, who has easy access to Northumbrian records would investigate whether there is any connection between the two places. The problem would become simpler if we could be sure when the School actually came into possession of the seal.

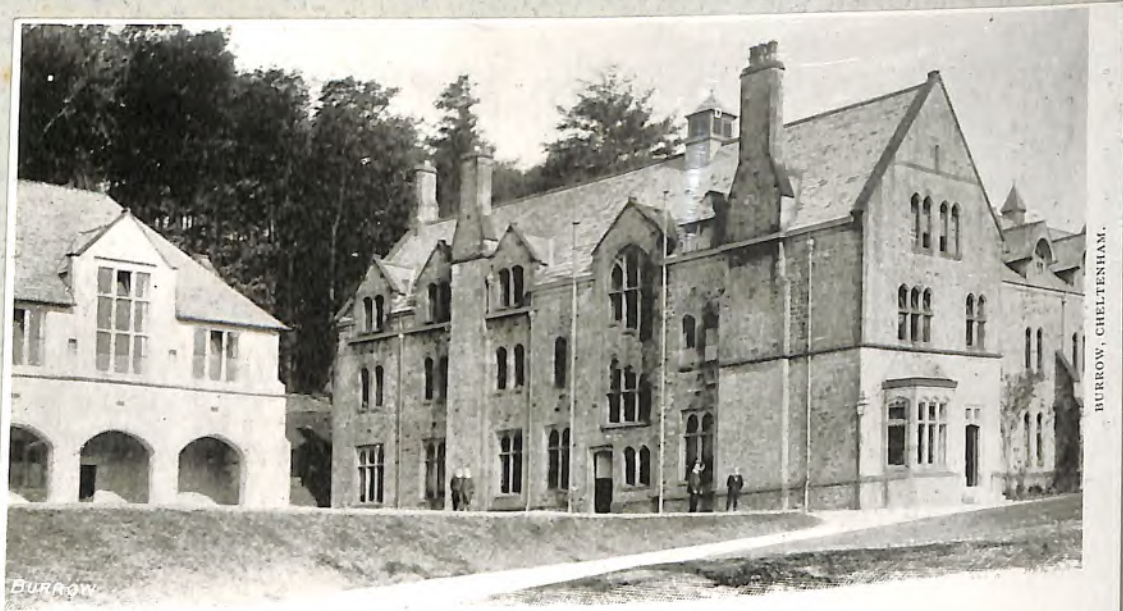
As we have often been asked how a shield of the seal may be obtained, we may add that, through Mr. Brayshaw's good offices, we have received some particulars from Messrs. Fisher and Ludlow. They are produced on beaten copper with an antique silver finish, mounted on an oak board about 13 inches by 16 inches. The price depends on the quantity. A single one costs three guineas, but for three ordered at once there is a reduction of 5/- each and for a quantity of six or more a reduction of 10/- each.



Giggleswick



Charter of Edward VI, granted to Giggleswick School.



BURROW, CHELTENHAM.

BURROW

GIGGLESWICK SCHOOL.
SOUTH WING OF BOARDING HOUSE.



BURROW, CHELTENHAM.

BURROW

GIGGLESWICK SCHOOL.
FRONT OF BOARDING HOUSE.



GIGGLESWICK SCHOOL.

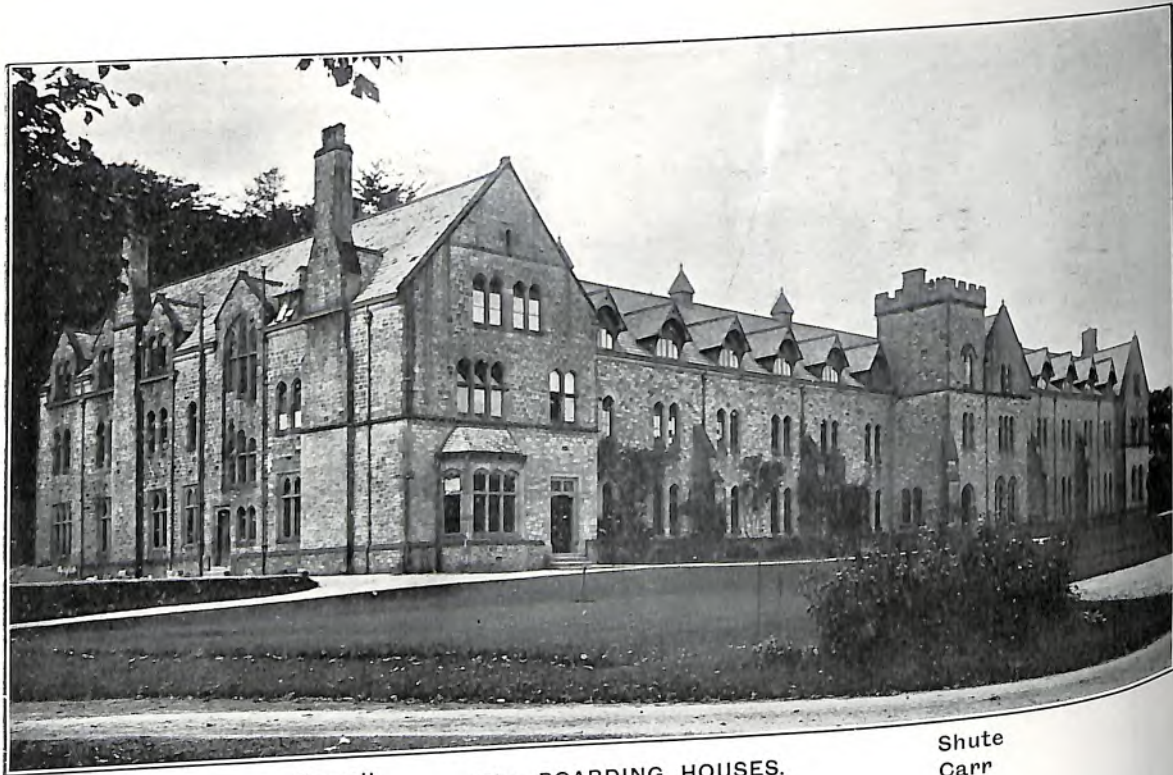
7



From a Photograph by

THE SCHOOL, from the North East.

A. Horner, Settle.



Nowell
Paley

The BOARDING HOUSES.

Shute
Carr



BIG SCHOOL.



LABORATORIES and FORM ROOMS.



The CRICKET PAVILION and GROUND.

1895.

1895 GIGGLESWICK.

PARISH COUNCIL.—The monthly meeting of the Giggleswick Parish Council was held in the National School on Friday, the 6th of December. The chair was taken by Councillor William Brown (vice-chairman), there being also present—Councillors Ingham, Hunter, Brennand, Parker and Duxbury.—The minutes of the last meeting of the council, held on the 1st November, were read and confirmed.—Correspondence was read between the clerk and Mr Gilson Martin, Mr C. E. Bygrave, Mr Trevor Edwards, and the county council.—The Clerk reported receipt of copy of an order made by the West Riding Boundaries' Committee respecting the granting of one additional rural district councillor each for Settle, Giggleswick, Ingleton, and Bentham.—The Clerk also reported receipt of a letter from the county council, re charities, with the Charity Commissioners' printed report relating to same.—Councillor Parker reported payment of Lister's Charity, amounting to £2 6s, by Mr Emmanuel Johnson to Matilda Jenkinson, on Dec. 4th, 1895.—Considerable discussion took place as to the desirability of repairing the Ebbing and Flowing Well, and it was ultimately decided that this council should undertake to do the necessary work by public subscription, and on the motion of Councillor Ingham, seconded by Councillor Brown, it was resolved that Councillors Duxbury and Brennand be appointed a sub-committee to collect the needful funds.—It was decided that the field called "Poor Close" be advertised by printed posters to be let for three years from the date when Mr Inman's tenancy expires, Councillor Parker undertaking to have the necessary posters printed and put up.—After some discussion respecting the charities, it was resolved that the next meeting be held on Friday, December 30th.—The following charities are now administered by the Giggleswick Parish Council:—

Foster's Charity.—This is for payment of £5 a year to the poor people of the parish. The money is divided into four equal portions for the poor of each division in the parish, viz., Giggleswick, Settle, Stainforth, and Rathmell-with-Langcliffe.

Thomas Clapham's Charity.—Mr Thomas Clapham, late of Giggleswick, deceased in 1797, purchased £100 Navy 5 per cent. in the names of William Clapham, since deceased, and the Rev John Clapham, his son, upon trust, that they and the survivor of them, his executors, &c., should annually distribute the dividends thereof among such of the poor housekeepers of, and belonging to, the township of Giggleswick, as they should think the greatest objects of the donor's charity.

Poor's Allotment and Poor's Close.—The charity under which this property was acquired is not well known, but there is reason to believe it may be ascribed to a person named Thornton. The Poor's Allotment consists of 15 acres of rough enclosed land on Giggleswick Scarr. The land is let by public bidding, and the rent is divided among the several townships in the same way as the Foster's Charity.

Lister's Charity.—Given by Matthew Lister, and consists of a yearly payment of £1 6s for poor widows, understood to be a rent charge on some property at Paley Green, in the township of Giggleswick. The money used formerly to be laid out in bread.

Aug. 1906

GIGGLESWICK.

PARISH COUNCIL.—The usual monthly meeting of the Giggleswick Parish Council was held in the National School on Friday, there being present:—Messrs John Harrison (chairman), Wm Fell, Hy Jenkinson, G. C. Stirk, and G. I. Whiteley; with the clerk (Mr W. J. Robinson).—Mr John Parker, assistant overseer, was granted an increase of salary of £2 for the current year for extra work in preparing a new valuation list of the township. The draft scheme relating to charities in the parishes of Giggleswick and Rathmell was laid before the council. The Giggleswick charities affected are Clapham, Clarke, Foster (share of), Lister, Poor's Allotment (including Poor's Close) share of. At present the several charities are administered by separate trustees, and the new scheme provides that the charities shall be consolidated under one body of trustees for each township. The scheme further provides that the Giggleswick charities shall be administered by a body of trustees which shall when complete consist of three competent persons, being the incumbent for the time being of the parish of Giggleswick as ex-officio trustee, and two representative trustees to be appointed by the parish council of Giggleswick, each appointment of a representative trustee to be for a term of four years. The income applicable under the scheme is to be applied, according to the provisions of the draft, in making payments under one or more of the following heads for the benefit either of the poor of the interested township generally or of such deserving and necessitous persons resident therein as the trustees concerned select for the purpose, and in such way as they consider most advantageous to the recipients, and most conducive to the formation of provident habits:—(1) Subscriptions or donations in aid of the funds of (a) any dispensary, infirmary, hospital, or convalescent home, whether general or special, upon such terms (so far as may be) as to enable the trustees to secure the benefits of the institution for the objects of the charities; (b) any provident club or society established in or near the interested township for the supply of coal, clothing or other necessaries. (2) The supply of (a) clothes, linen, bedding, fuel, tools, medical or other aid in sickness, food or other articles in kind to an amount not exceeding £5 in any one year; (b) temporary relief in money by way or loan or otherwise in case of unexpected loss or sudden destitution to an amount not exceeding £2 in any one year. Provided that in no case shall the funds of the charities be applied in aid of the rates for the relief of the poor or other purposes.—Exception was taken to the Vicar being ex-officio trustee, and on this point a letter was read from the Charity Commissioners that, as the vicar was the ex-officio trustee of Clarke's Charity, the Commissioners were not prepared to omit the vicar from the body of trustees.—The clerk was instructed to make objection on the ground that the vicar was not an ex-officio trustee of Clarke's Charity, but the income representing the charity was handed to him for convenience of distribution by the governors of Giggleswick School, in whose names the corpus of the fund stood; also that the governors transferred the fund (£52 10s) to the Official Trustee of Charitable Funds on the condition that the same be administered by trustees appointed by the parish council of Giggleswick and Rathmell parish meeting, and it was also on this ground that the parish council applied for the present scheme; that the fund was not of a sufficient amount proportionately to the other charities to warrant an ex-officio trustee being appointed for the same; and that if the Commissioners could not see their way to concur in the wishes of the council, that a separate scheme be applied for in respect of Clarke's Charity.—The clerk was instructed to write to the Settle District Council asking that the footpath opposite the church be kerbed, channelled, and flagged.—A precept was issued to the overseers for £14, being the amount voted at the annual lighting meeting for street lighting purposes.

The library.



The Cricket Pavilion.



The Library.

1926

Sir Alexander Godley in opening the War Memorial Library will use the form:—

On behalf of the subscribers I declare open this memorial to the members of this School who lost their lives in the war of 1914 to 1918. In honouring these men, we honour also the sacrifice of those who loved them; nor do we forget the unrecorded sufferings of many others, who served their country and survived.

The Bishop will dedicate the Library, using the following words:—

In the faith of Jesus Christ we dedicate this Library as a memorial to the members of Giggleswick School who lost their lives in the war of 1914 to 1918, in the name of the Father, and of the Son, and of the Holy Ghost. Amen.

The following prayer will then be said by the Bishop:—

Sanctify we beseech Thee O Lord this Library, that it may serve to the increase of sound learning and true religion; and grant that those who use it may by Thy Holy Spirit be led to a fuller knowledge of truth, through Jesus Christ our Lord. Amen.

WAR MEMORIAL AT
GIGGLESWICK SCHOOL.

A NEW LIBRARY.



THE OPENING OF THE MEMORIAL BY GENERAL GODLEY.

See also p. 288 a for Exterior
and Interior Views of Library

1926

Sir Alexander Godley in opening the War Memorial Library will use the form:—

On behalf of the subscribers I declare open this memorial to the members of this School who lost their lives in the war of 1914 to 1918. In honouring these men, we honour also the sacrifice of those who loved them; nor do we forget the unrecorded sufferings of many others, who served their country and survived.

The Bishop will dedicate the Library, using the following words:—

In the faith of Jesus Christ we dedicate this Library as a memorial to the members of Giggleswick School who lost their lives in the war of 1914 to 1918, in the name of the Father, and of the Son, and of the Holy Ghost. Amen.

The following prayer will then be said by the Bishop:—

Sanctify we beseech Thee O Lord this Library, that it may serve to the increase of sound learning and true religion; and grant that those who use it may by Thy Holy Spirit be led to a fuller knowledge of truth, through Jesus Christ our Lord. Amen.

WAR MEMORIAL AT GIGGLESWICK SCHOOL.

A NEW LIBRARY.

A handsome library, which has been erected at a cost of about £8,000, to the memory of 120 old boys of Giggleswick School who fell during the Great War, was opened on Saturday afternoon by General Sir Alexander I. Godley, K.C.B., K.C.M.G., and dedicated by the Bishop of Burnley (the Rev. Dr. Henn), a former Governor of the school. Saturday was also the annual Speech Day at the School, and the two functions had attracted an unusually large attendance of parents and old boys of the school. The erection of the new library has been made possible through the generous subscriptions of old boys and other well wishers.

At the opening ceremony the Chairman of the Governors (Mr. J. A. Slingsby, of Carleton, Skipton) said the day was to all connected with the School a day of sorrow, yet one of pride and gratitude. It was a day of sorrow because so many of our fellow-countrymen were called upon to give their lives for their country. They felt pride because the young men gave that help so willingly. So long as Giggleswick School remained the library would remind them of those sacrifices, and every Giggleswick boy was proud of the men who served. It was for those who were left to do their duty in life both when it was easy and when it was difficult.

General Godley said the record of the School in the war was a wonderful one. No fewer than 800 old boys served in the war. Of these, 13 received the Distinguished Service Order, and 48 received the Military Cross or the Military Medal, the greatest awards for gallantry that any soldier could receive, to say nothing of foreign Orders and decorations and promotions. One of the 120 who laid down their lives was a very celebrated and distinguished soldier, General A. H. Baldwin, who served under the speaker's command on the Gallipoli Peninsula in August, 1915. General Baldwin was ordered to take command of a column which was to scale the heights of a great mountain and consolidate a footing. General Baldwin commanded the attack with the greatest skill and gallantry, and very nearly succeeded in the task that had been set. It was too difficult, however, to be done, and General Baldwin laid down his life in attempting it. "That is only one instance, but it is an example of how the boys of Giggleswick School laid down their lives," said General Godley. Generals who had the honour to command such men were glad of opportunities of paying tribute to them, and showing the admiration and affection they had for them.

General Godley during the day inspected the School O.T.C., and also presented the prizes at the Speech Day proceedings.

See also p. 288 a for Exterior
and Interior Views of Library