



Concrete blocks of dome of school
Chapel.

15^v



THE
FIRST SERMON
Vpon EXOD. CHAP. 8.

VERS. 1. 2.

And the Lord spake unto Moses, Go unto Pharaoh,
and say unto him, Thus saith the Lord, Let my
people goe that they may serue me.
And if thou refuse to let them goe, behold, I will
smite all thy borders with frogs.

His Chapter hath three parts according to
the three judgements here remembred.
The first judgement was the *frogs* from
verse 1. to verse 16.
The second was of *lice* from verse 16.
to verse 20.
The third of *flies*, noysome flies, to the end of the
Chapter.

B L

Leaf from Shute's Sermons

RENDIS. JOSIA SHUTE S: THEOL: BA
Sweet Ayres to Hear
All with Eare:
Ambin'd Harmony
Stafy:
s) mounted high
from Ear to th' Ey)
d wisemen to Christ
1 Egyptian Myst
Heav'n behouldle).
Booke unfoalde.
Ed. Spence

In this first judgement which is of frogs, we are to observe these three things.

First, the denunciation of it.

Secondly, the execution of it.

Thirdly, the event of it.

The denunciation of it in the first 4 verses.

The execution, in verse 5. 6.

The event of it is threefold:

First, the Magicians doe the like verse 7.

Secondly, thence there is a remoovall of this judgement, and the meanes of the same, from the beginning of verse 8. to the end of verse 15.

The third event is the obduration, and further hardning of the heart of *Pharaoh*, verse 16.

Come again to the denunciation, there are two things in it.

First, *Moses* from *God* makes a motion to *Pharaoh*, to dismiss his people, verse 1.

Secondly, hee tells him upon his refusall of a judgement, and there is,

First laid down what the judgement should be, frogs,

Then the amplification of it, from the generality, to all his borders, in his bedchamber, in their troughs, their baking-troughs, and their ovens, they shall be a vexation to them night and day.

And then for the noysomenesse of them, that they should crawl about in all these places.

Now for the motion, which is laid downe in verse 1, that I may not *reciprocari* *ferram*, as *Tertulian* speaks,

will not draw my saw the same way againe, I willingly omit many things that might bee observed in this verse.



Concrete blocks of dome of school Chapel.



<i>Surgit Lector, adacti Tibimet</i>	<i>Heer's wife Charmer, whose Sweet Ayres to Hear</i>
<i>Scilicet, egregius (SHUTTS) ille feroco:</i>	<i>Each Soule delighted so to dwell ith' Ear:</i>
<i>Plebanus Yates, Animas Qui traxit in Auver:</i>	<i>Whose Life and Doctrines Combin'd Harmony</i>
<i>Poca docens Sacrum, quod pecte pandit iter:</i>	<i>Familiariz ed S^t Paul's Extasy:</i>
<i>Malleus Apeorodv constans, et X^{pi}o-<i>u</i> d'at:</i>	<i>But now (from growing Evills) mounted high</i>
<i>Qui nequit a Recto (Spe-ve-Metu-ve) Trubi:</i>	<i>(Change but the Soule her Seat from Ear to th' Ey)</i>
<i>Hunc tult in Portum Dominus Minitante Procella:</i>	<i>This bright Starr still doth Lead wisemen to Christ</i>
<i>Nec fuerant Tanto Se-cula digna viro:</i>	<i>Through this dark Bochim, and <i>egyptian</i> Myst</i>
<i>Umbra dat Effigiem, resonat tibi Pagina Mentem:</i>	<i>Nay heer (what himself doth in Heav'n behouldle).</i>
<i>Affollet ut Reliquis, gratus aderit Tibi.</i>	<i>Ev'n Blessed vjions doth his Booke un-fouldle.</i>
<i>Ed. Sparks.</i>	<i>Ed. Sparks.</i>



Giggleswick School Speech Day 1925

J. Smurston
J. Foster
Giggleswick

J. Brayshaw

J. Briggs
Parram
Giggleswick

Mrs. W. W. [unclear]
J. W. [unclear]
J. [unclear]
J. [unclear]
J. [unclear]
J. [unclear]

EXAMINER'S REPORT ON GIGGLESWICK
GRAMMAR SCHOOL,
CHRISTMAS EXAMINATION, 1866.

To the Trustees of Giggleswick Grammar School.

Gentlemen.

By desire of your Visitor the Lord Bishop of Ripon, I examined the several classes into which your Grammar School is divided, *viva voce*, on Tuesday and Wednesday the 18th and 19th of this month. Questions were also set to be answered in writing, on the various subjects studied during the past half-year.

I am exceedingly happy to be able to give a favourable report of the present condition of the School. In the first place, the numbers have increased since my last visit in December 1865, from 38 to 51, of whom 49 were in attendance, and went through the examination, against 31 last year. I was much gratified with the high state of discipline which evinced itself in the attention and orderly demeanour not only of the senior but also of the junior Classes.

There has been considerable progress in the classical work since last year. A passage from the Spectator was very fairly translated into Latin Prose, and the renderings of Greek and Latin Authors into English were remarkably correct.

The answers to questions on the Book of Judges, and



PORCH OF OLD SCHOOL.

The Deanery,
Chester.

May 20
1874

Dear Sir,

I have much pleasure in authenticating this photograph by my signature: & I am much obliged by the kindly feeling which has given me an opportunity of doing so.

Yr. Servant

H. Howson

E. Thomas Esq.

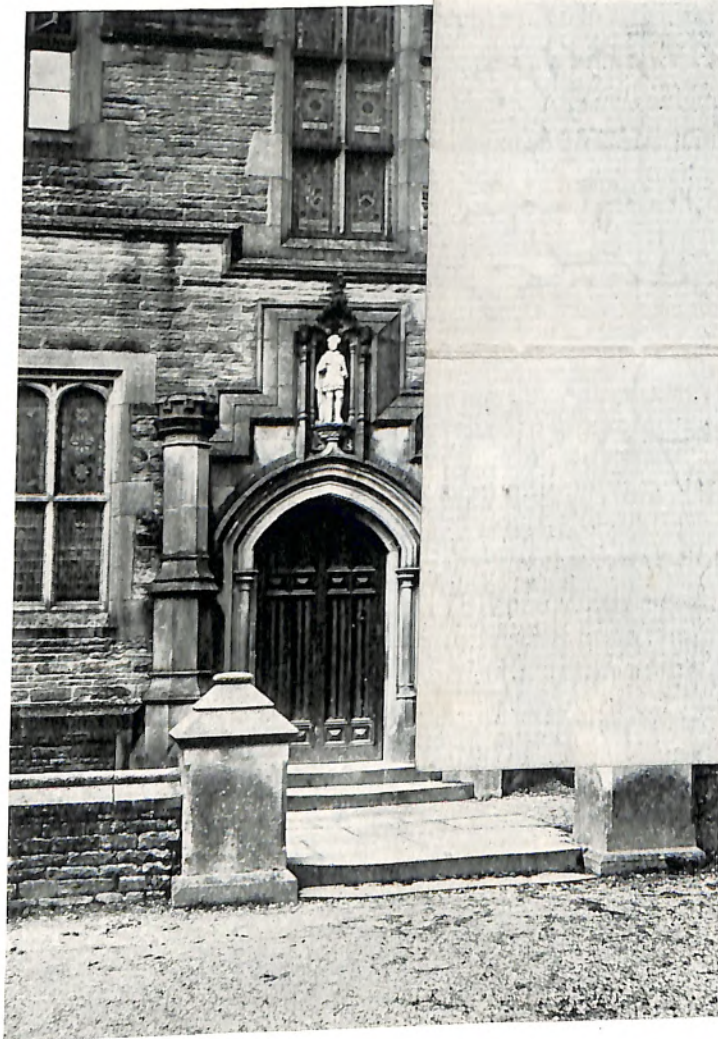
H. Howson



H. Howson

DEAN HOWSON.

BORN at Giggleswick, 1816, educated at the Grammar School, and afterwards went to Cambridge, where he took his degree in 1837. Private tutor to several well-known men, and then Head of Liverpool College. Author of many works and important articles. Appointed Dean of Chester, 1867. Died Dec. 15th, 1885.



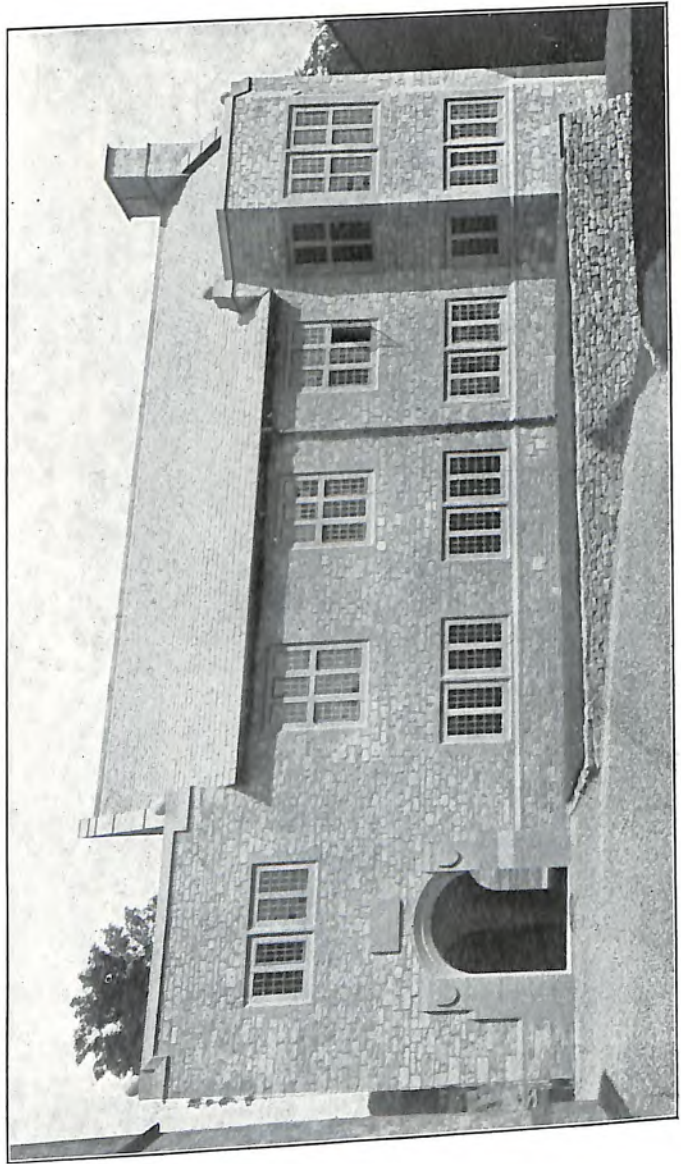
PORCH OF OLD SCHOOL.



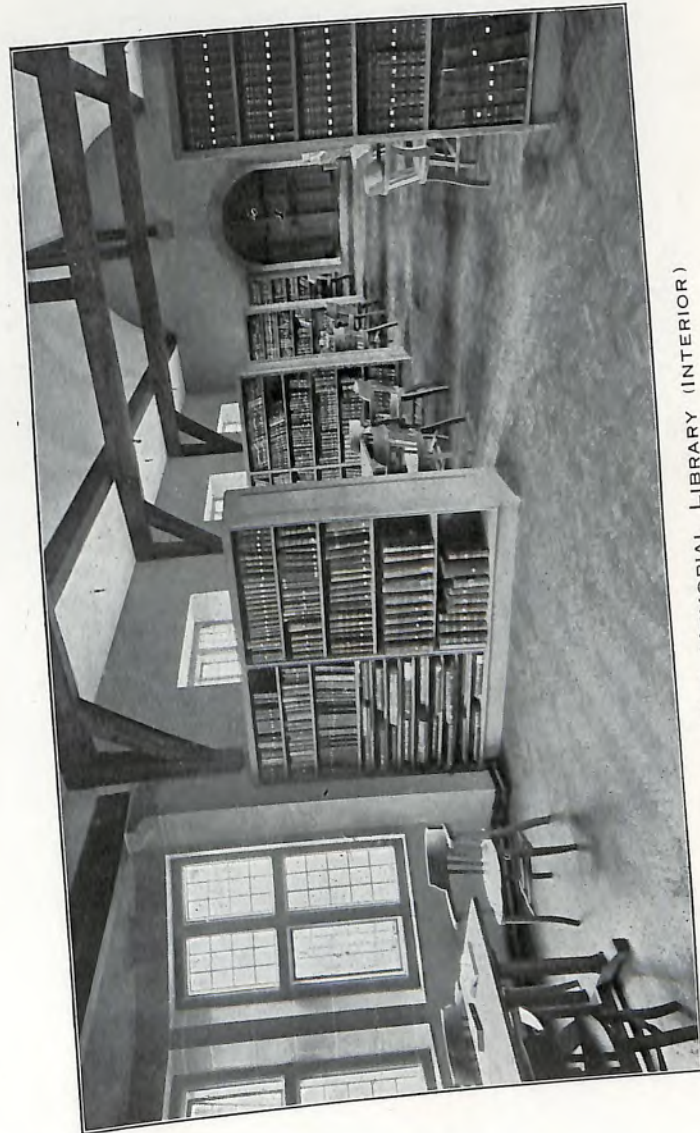
H. Howson

DEAN HOWSON.

BORN at Giggleswick, 1816, educated at the Grammar School, and afterwards went to Cambridge, where he took his degree in 1837. Private tutor to several well-known men, and then Head of Liverpool College. Author of many works and important articles. Appointed Dean of Chester, 1867. Died Dec. 15th, 1885.

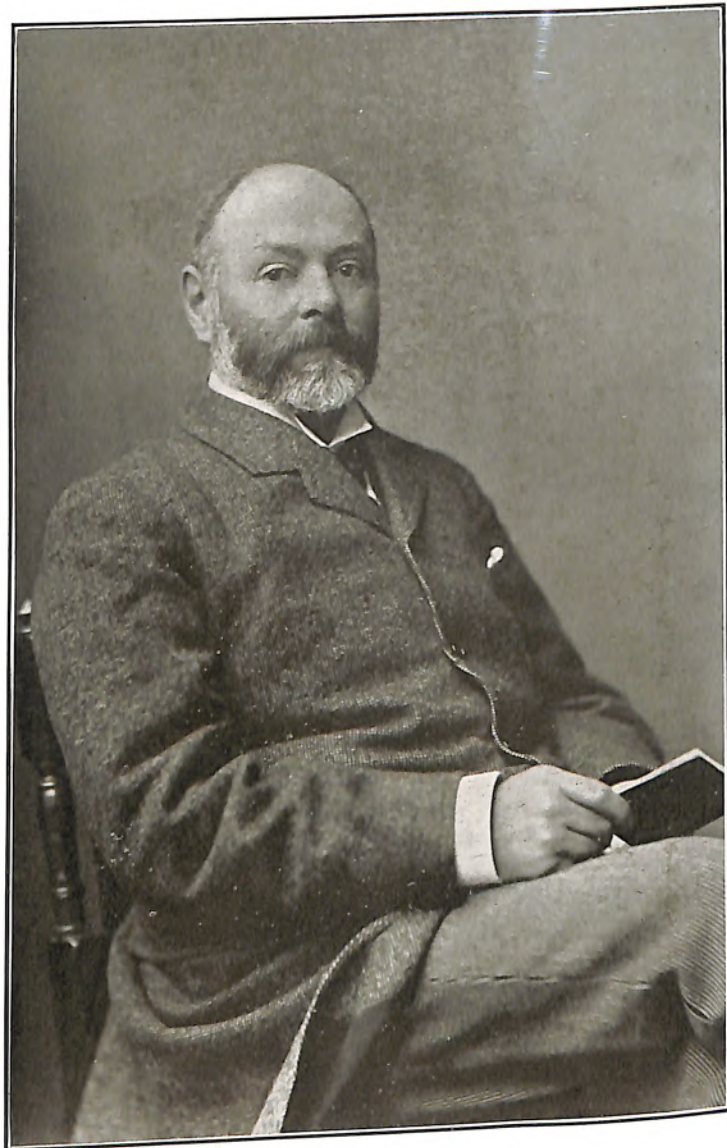


THE WAR MEMORIAL LIBRARY.



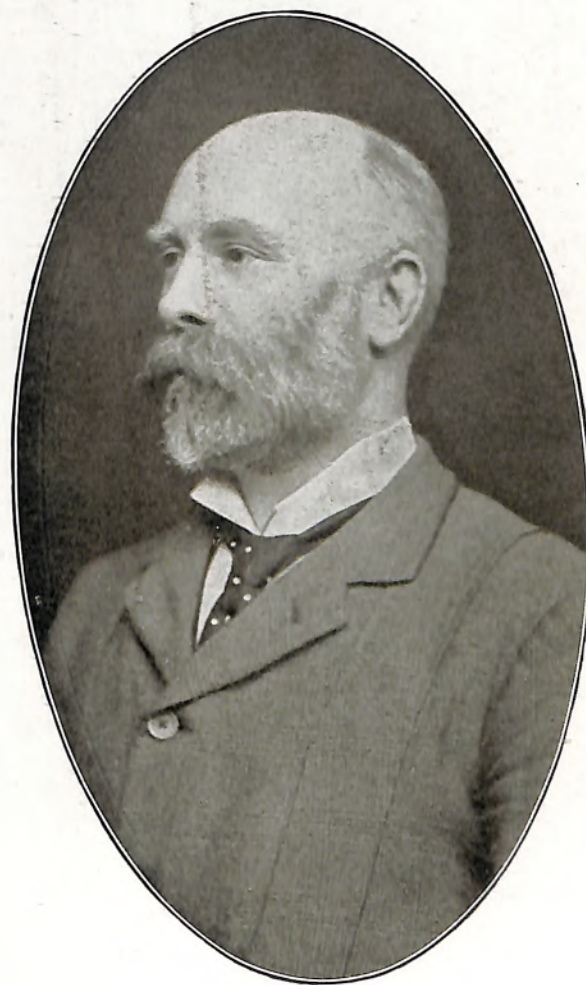
THE WAR MEMORIAL LIBRARY (INTERIOR)

see also 301 a



MR. BEARCROFT.

OBITUARY.—Considerable regret was aroused when it became known that Mr. Philip Bearcroft, late of Giggleswick School, had died rather suddenly at the residence of his brother, Vice-Admiral Bearcroft, at Partick, Glasgow. Deceased was the son of the late Rev. James Bearcroft, rector of Hadzor, Worcestershire, and was one of the original members of Keble College, Oxford. He joined the staff of Giggleswick School as assistant master in September, 1878, and took an active part in many important school functions, such as the Jubilees of Queen Victoria in 1887 and 1897, the laying of the foundation-stone of the School Chapel, etc. In 1909 he resigned active work as teacher, and was made Bursar and Secretary to the Headmaster. This post he gave up in 1910, after 32 years' valued connection with the School. Since his retirement he has been a constant visitor to the School, and only last week broke his journey at Settle on his way to his brother's in Scotland.



G. B. Mannock



OBITUARY
when it bec
late of G
suddenly a
Admiral I
ceased wa
Bearcroft, 1
wa one of
Oxford. I
School as
and took
school func
Victoria in
foundation.
1909 he resi
made Burs
This post
valued con
retirement
School, and
Settle on hi

GIGGLESWICK SCHOOL,
SETTLE,
YORKSHIRE,

October, 1908.

DEAR SIR,

It has been decided to commemorate the late GIFFORD BROMLEY MANNOCK'S great services to the School, as a Master for thirty-four years and as House Master to Bankwell for twenty years.

Bankwell not being the property of the Trustees of the School, nothing of a permanent character can be done there. Mr. Mannoek's books have however been bought and placed in a special bookcase to serve as a 'Mannoek Library' for the use of Bankwell. A Tablet will also be placed in the School Chapel.

Mr. Mannoek had such a peculiar position in the life of the School and in the hearts of 'Old Boys,' Masters and Parents, that a great deal more than the £60 necessary for these two objects has already been given or promised, and it is felt that a great many who knew him in former years would wish to join in the provision of some lasting memorial of gratitude and affection. What form this will take must depend to a certain extent on the amount of support that is received, and will be decided on after consultation with the General Committee.



OBITUARY.—
 when it became
 late of Gigg
 suddenly at
 Admiral Bea
 ceased was
 Bearcroft, rec
 was one of the
 Oxford. He
 School as ass
 and took an
 school functio
 Victoria in 1
 foundation sto
 1909 he resign
 made Bursar
 This post he
 valued connec
 retirement he
 School, and on
 Settle on his w

These objects have been suggested, and in all probability the ultimate choice will fall on one of them.

- (1). Some enlargement and improvement of the Swimming Bath.
- (2). The Decoration of Big School by placing Panelling and Honour Boards on the wall opposite the Hyde Memorial Organ.
- (3). A small Observatory.
- (4). The establishment of a small Exhibition (say £10 per annum) to be held in the Upper School by boys who have been educated at least two years at 'Bankwell.'

A 'Mannock Memorial Fund' has been opened at the Bank of Liverpool, Settle, to which contributions, however small, may be paid, or they may be sent direct to MR. BEARCROFT or to me. Any expression of opinion as to the best form for the Memorial will be helpful.

I am,

Yours faithfully,

W. W. VAUGHAN.

The Fund will be closed on December 31st.

The following have already consented to join the General Committee:

- H. C. BARNES-LAWRENCE
- P. BEARCROFT
- REV. W. J. BENSLEY
- J. K. BOOTH
- J. V. BOOTHBY
- T. BRAYSHAW
- L. BRIGG
- T. D. CARVER
- W. B. CRESWICK
- E. GOULD
- H. M. F. HAMMOND
- H. INGLEBY
- H. D. LEATHER
- F. LOMAX
- C. F. MOTT
- E. B. OSBORN
- J. B. OGDEN
- G. PODMORE
- J. S. SCOTT
- DOUGLAS R. SMITH
- REV. G. STYLE
- REV. J. A. ARNAN TAIT
- W. W. VAUGHAN
- G. C. VEALE
- T. H. WALROND
- REV. J. R. WYNNE-EDWARDS

The Grammar School of King Edward the Sixth
OF GIGGLESWICK

FOUNDED 26TH MAY, A.D. 1553

*New Scheme approved by the Queen's Most Excellent Majesty in
Council on the 9th day of August, 1872.*

THE GOVERNING BODY.

THE LORD EDWARD CAVENDISH, M.P., Devonshire House, London.—*Chairman.*
HECTOR CHRISTIE, Esq., Langcliffe Place, Settle.—*Vice-Chairman.*
RALPH ASSHETON, Esq., Downham Hall, Clitheroe.
JOHN BIRKBECK, Esq., Anley, Settle.
JOHN BRIGG, Esq., Kildwick Hall, Leeds.
REV. JOHN EDMOND COULSON, M.A., Long Preston, Leeds.
REV. WM. HENRY COULTHURST, LL.B., Bowerly, Settle; Vicar of Giggleswick.
THOMAS FENWICK PENWICK, Esq., Burrow Hall, Kirkby Lonsdale.
HIS HONOUR JUDGE INGHAM, Marton, Skipton.
WALTER MORRISON, Esq., M.P., Tarn House, Malham, Bell Busk, Leeds.
FRANCIS SHARP POWELL, Esq., M.P., Horton Old Hall, Bradford.
CHARLES SAVILE ROUNDELL, Esq., 16, Curzon Street, Mayfair, London.
PROFESSOR SCHUSTER, Ph.D., F.R.S., The Owens College, Manchester.
REV. H. I. SWALE, M.A., Ingfield, Settle.
THE RIGHT HON. SIR UGHTRED J. KAY-SHUTTLEWORTH, BART., M.P., Gawthorpe
Hall, Burnley.
THOMAS EDWARD YORKE, Esq., Bowerley, Pateley Bridge, Yorkshire.

CLERK TO THE GOVERNORS.

WILLIAM HARTLEY, Esq., Solicitor, Settle.

HEAD MASTER.

REV. GEORGE STYLE, M.A., late Fellow of Queens' College, Cambridge.

ASSISTANT MASTERS.

Upper School.

WILLIAM MARSHALL WATTS, D.Sc. (Lond.), B.Sc., Victoria University, Manchester.
DOUGLAS RÜCKER SMITH, M.A., late Scholar of Queen's College, Oxford.
EDWARD PEAKE, M.A., Oriel College, Oxford.
REV. ARTHUR CROSS, M.A., Christ's College, Cambridge.
JOHN ROSINDALE WYNNE-EDWARDS, M.A., late Scholar of Christ Church, Oxford.
BASIL HEDLEY, B.A., Balliol College, Oxford.
ARTHUR THORNTON, B.A., late Scholar of Christ's College, Cambridge.
STEPHEN P. SMITH, Esq., of the University of Heidelberg.
WALTER HENRY CHITTY, B.A., late Scholar of Jesus College, Cambridge.

Junior School.

PHILIP BEARCROFT, M.A., Keble College, Oxford.
ARTHUR BREWIN, Esq.
GIFFORD BROMLEY MANNOCK, Esq.

DRAWING.

REV. ARTHUR CROSS, M.A.,
Certificated under the Committee of Council on Education.

MUSIC.

CHARLES FREDERICK HYDE, Esq., Organist and Choir Master; GIFFORD BROMLEY
MANNOCK, Esq.; JOHN BOOTH, Esq., (Violin).

GYMNASTICS AND DRILL.

SERGEANT-MAJOR CANSDALE.

3 Oct-1870.
Ages last Birth day.

1923

GIGGLESWICK SCHOOL.



Founded in 1512. Re-founded and Endowed by
Royal Charter dated 26th May, A.D., 1553.

*New Scheme approved by the Queen's Most Excellent Majesty in
Council on the 9th day of August, 1872, and amended
April, 1903, January, 1910, and in June, 1923.*

mar School.

HOOL.

II.

rsall, ma.

rsall, mi.

d, ma.

ton

am

ma.

aw, ma.

III.

n, mi.

g

rnthwaite

, ma.

thy, ma.

son, ma.

eld, ma.

all, tert.

on, mi.

na. Oct 1870

w, mi. Oct 1870

, ma.

mi. Oct 1870

1/2 Robinson

1/2 Greenwood

1/2 Pierson

1/3 Gerrish

General Statement. In harmony with the Scheme of the Endowed Schools Commission, the Governors provide adequate instruction, in the subjects mentioned below, for boys up to the age of nineteen who intend to proceed from School to the Universities, to compete for appointments in the Civil Service, or to pass the Entrance Examinations for Woolwich, Cooper's Hill, or Sandhurst; also to provide more completely than has been usual for the education of those who wish to qualify themselves at School for the legal or medical professions, or for mercantile life.

Giggleswick is a First Grade Modern School,—that is, a School answering in every respect to a First Grade Classical School, except that the leading subjects of instruction are Latin, Modern Languages, Physical Science and Mathematics.

The whole internal organization, management, and discipline of the School is in the hands of the Head Master.

Instruction: Religious. Religious Instruction is given generally throughout the School in accordance with the teaching of the Church of England: but there are provisions for special exemptions upon the application of parents.

On Sundays in term time (by permission of the Vicar and with the sanction of the Bishop of the Diocese) there are special services for the School in the Parish Church. For these the Head Master is responsible.

Secular. The subjects of Secular Instruction are the English, Latin, German and French Languages and Literature; Arithmetic; Mathematics, pure and applied; Geography, political and physical; History; Political Economy; Chemistry and Physics; Botany and Physiography; Drawing; Vocal Music; Swimming and Gymnastics.

The foregoing subjects are taught in different parts of the School in such a way as to make the work in each as thorough as possible.

Greek is taught, instead of German, without extra charge, to boys who intend to go to the Universities, and to other boys who require it.

Modern Languages. Special prominence is given in the School Course to Modern Languages: French is taught throughout the School except in the lowest Form; and all boys above a certain standard (except those who require Greek) take German.

Physical Science. Chemistry and the various branches of Physics (including Electricity and Magnetism) are included in the ordinary work of the Upper School; all above the Third Form receive instruction in Practical Chemistry and Analysis.

Laboratory. The Laboratory is well provided with Apparatus and Chemicals. Upon the erection of the Laboratory and Lecture Room and upon the provision of Apparatus more than £2,000 have recently been spent.

Drawing. Drawing forms part of the regular work, except in the Fifth and Sixth Forms. In addition to Freehand, Perspective, and Geometrical Drawing, those who require it are taught Mechanical Drawing.

Music. Singing is taught to all boys in the lower part of the School and to the School Choir, without extra charge. There is also a Choral Society. Special rooms for Music are attached to the School.

Sixth Form Work. For boys who reach the Sixth Form special arrangements are made (so far as is necessary) for preparing them for the Universities, for Woolwich or Sandhurst.

Distinctions gained by boys. A list of some of the Distinctions recently gained is printed in the Class Lists. Besides numerous Scholarships at the Universities they include an Indian Civil Service appointment in each of the years 1834, 1885, and 1886, a Fellowship at St. John's College, Cambridge, the Junior Mathematical Scholarship at Oxford, and a Commission in the Engineers.

Examinations. The School is examined once a year by Examiners, unconnected with the School, appointed by the Governors. The Examiners report to the Governors on the proficiency of the scholars and on the position of the School as regards instruction and discipline. Prizes and Exhibitions are given upon the result of the examination. Other examinations are conducted by the Masters of the School. The examination is conducted in January, May, and September. Application for admission to the School must be made to the Head Master, upon a printed form, which he will supply to all applicants.

Admission. The examination for admission is graduated according to age, but it never falls below the following standard—viz., Reading, Simple Dictation, the First Four Rules of Arithmetic, the Outlines of the Geography of England: it is held usually on the day before the commencement of each Term.

Boys are admissible into the Junior School at the age of nine. In it they are carefully grounded in English, Latin, French, Arithmetic, and Geography, for their promotion into the Upper School. No boy may enter the Junior School who is above thirteen years old, or remain in it after he is fourteen.

Boys are promoted from the Junior School into the Upper School as they are found qualified. Other boys are admitted upon passing an easy entrance examination, provided they are under fifteen years of age: boys over fifteen must be prepared to join Forms suitable to their age.

No boy may remain in the School after the end of the Term in which he attains the age of nineteen, except with the express permission of the Head Master.

It is particularly requested that application for admission may be made as early as possible. In the case of a boy who has already been at School, a certificate of good conduct is required from the School he is leaving.

The School Buildings (completed in 1886) are close to the Boarding House. Besides the large School Room there are eleven admirable Class Rooms and Lecture Rooms, so that every Form works under the most favourable conditions: special attention has been paid to lighting, warming, and ventilation.

In the year 1869 the Governors established a large Boarding House or Hostel for the reception of boarders: and five years later they increased it to its present size. The Hostel resembles the most convenient Boarding Houses at the best English Schools, containing numerous Studies for the elder boys, and Dormitories so arranged that each boy has a separate compartment. According to the Hostel system the general management is in the hands of the Governing Body, so that it is not an object to the Master that profit should be made from boarders. There is at the Hostel excellent accommodation for about 150 boarders.

At the close of the year 1886 the Governors obtained in the vicinity of the School, a house known as 'Bankwell' and established it as a *Boarding House for younger boys only*. Boarders at Bankwell enjoy all the advantages of other members of the School, but their work in the early morning and in the evening is done in their own boarding house: in other respects also the arrangements at Bankwell are made with special regard to the requirements of boys under thirteen years of age. At the age of thirteen boarders pass on from Bankwell to the Hostel.

The Boarding Houses are under the immediate control and management of the Head Master, who is aided by ten Resident Assistant Masters. Thus boarders have ample opportunity of obtaining additional help in their work, and all of them, except the upper boys, prepare their evening work in the presence of a Master.

The School Sanatorium is completely separated from the other buildings, and isolated. All cases of contagious disease are immediately removed there. There are also wards away from the Hostel for doubtful cases.

In 1879 the system of drainage was completely reconstructed in accordance with the best principles of sanitary science. The plan was made and its execution approved by experienced inspectors of the Local Government Board.

The system is inspected periodically and periodical reports are made to the Governors.

The water supplied to the School has been analysed and thoroughly approved by Dr. Frankland, F.R.S.

The School Library (towards which every boy pays 2s. a term) contains about 2,000 volumes and is rapidly increasing; it is open to the upper boys for reading and reference: most of the books may be taken out by any boy.

The Museum, which occupies part of the old School Buildings, contains the valuable and interesting Collection of Cave Remains presented by the Victoria Cave Excavation Committee, and good collections of Minerals, Fossils, Birds, Eggs, &c. Contributions are invited from boys and their friends.

The Bath (in which the water is 60 feet by 26 feet and from 6 feet to 3 feet deep) is close to the Hostel, within a covered building which is warmed. The water also is warmed to 70° F., so that bathing continues throughout the year. Beginners are carefully taught to swim.

The Gymnasium (built by subscription in 1886 at a cost of about

Junior School.

Upper School.

Buildings: School.

Boarding Houses:

The Hostel.

'Bankwell,' a separate Boarding House for boys under twelve.

Sanitary Provisions Sanatorium.

Drainage.

Inspection.

Water.

Library.

Museum.

Swimming Bath.

Gymnasium.

£1,200) is used by all boarders regularly under adequate superintendence and instruction.

All boarders, *unless parents object on account of health*, are charged at the end of each term 7s. for the Bath and 7s. for instruction in Gymnastics. Day boys using either the Bath or the Gymnasium are charged the same.

Joiner's Shop.
Games, &c.

The Joiner's Shop is in the large room of the Old School. Systematic instruction is given by a well-qualified Joiner, at a charge of 7s. a term.

Much attention is given to physical development. Besides Swimming, Gymnastics, and Drill, all boys, not hindered by health, are expected to take part regularly in Cricket, Football and other games. The Playing Fields adjoin the School premises.

Covered Playground.
School Fees.

When the weather prevents out-door games there is a large Covered Playground (100 feet by 50 feet) available.

The year is divided into three School Terms, the payments for which are equal in amount. The following are those fixed by the Governing Body:—

Entrance Fee—Boarders £2; Day boys £1.

Day boys—Tuition Fee (including all subjects taught) £4 a term.
Boarders under thirteen years of age—Tuition, £5 a term; Board and Washing, £15 a term.

Boarders over thirteen years of age—Tuition, £8 a term; Board and Washing, £16 a term.

These payments must be made terminally in advance. They are made to the Craven Bank, Settle, to the credit of the Governors. A statement is forwarded a week before the commencement of each term.

Boys who do practical work in the Chemical Laboratory are charged 7s. at the end of each term for use of apparatus (with which they are furnished free of cost) and chemicals.

Instruction in Instrumental Music, Piano or Violin, can be obtained at an extra charge of six guineas a year.

Exhibitions.

The Governors have power, under the Scheme, to grant Exhibitions, tenable in the School itself, either at admission, or, on the reports of the Examiners and Head Master, to boys already in the School. Exhibitions are given as the reward of merit only. Other Exhibitions are offered, to be competed for by boys educated in Elementary Schools of the ancient parish of Giggleswick. The present number of Exhibitions in the School is ten.

The Governors also intend to establish, when the state of funds admits, one or more Exhibitions tenable at some University or other place of liberal education. Such Exhibitions to be awarded for attainments in Mathematics, Physical Science, or Modern Languages.

Carr Exhibitions.

Boys educated for two years at Giggleswick have a preference to two Carr Exhibitions at Christ's College, Cambridge.

Hastings Exhibitions.

Giggleswick has the privilege of sending Candidates to compete for the Hastings Exhibitions, value £90 a year for five years, at Queen's College, Oxford.

Vacations, &c.

The Summer Vacation commences on the first Thursday in August, and lasts seven weeks; the Winter Vacation commences on the Thursday in the week before Christmas week, and lasts five weeks; the Spring Vacation, of three weeks, commences about the middle of April.

A Term's notice must be given to the Head Master, in writing, before the removal of any pupil, or a Term's fees will be charged.

The School is situated in a beautiful and healthy locality, about a mile from the Settle and Giggleswick Stations, on the Midland Railway. Communication is easy with London and the large towns of Yorkshire and Lancashire, with Westmoreland and Cumberland, and with Scotland, by way of Carlisle.

All communications on School matters to be addressed to the Head Master, Giggleswick, Settle, Yorkshire.

October, 1890.

SETTLE, 10TH MAY, 1882.

DEAR SIR,

GIGGLESWICK SCHOOL.

I hereby give Notice that a SPECIAL MEETING of the Governors will be held at the Hostel, Giggleswick, on Monday, the 22nd day of May, inst. at One o'clock in the Afternoon, when, in consequence of the terrible calamity which has befallen Lady Frederick Cavendish and the Duke of Devonshire, by the foul and dastardly murder of the late Chairman of the Governors, a vote of condolence and sympathy will be proposed.

Yours obediently,

WM. HARTLEY,

CLERK.