

SETTLE CHURCH HOUSE.

A LECTURE

ILLUSTRATED BY LANTERN SLIDES,

ON

'Birds of the Neighbourhood'

WILL BE DELIVERED BY

E. PEAKE, ESQ., M.A.,

ON

WEDNESDAY, APRIL 4TH,

AT EIGHT O'CLOCK. 1892

ADMISSION FREE.

Children not admitted unless with their parents.

A Collection will be made in aid of the funds of the  
Church House.

J. W. LAMBERT, PRINTER, SETTLE.

SETTLE CAVE EXPLORATION.

It has been long known, that in the district of Craven there are many Bone Caves, and it has been thought desirable to organise a thorough and systematic exploration of them. From the report of those who have visited the Caves, there is reason to hope that discoveries of great scientific interest may be made.

The following gentlemen have consented to serve on the Committee of Management:—

- Sir J. P. KAYE SHUTTLEWORTH, Bart., (Chairman).  
Sir CHAS. LYELL, Bart., M.A., D.C.L., L.L.D., F.R.S., &c., 73, Harley Street, W.  
Sir JOHN LUBBOCK, Bart., F.R.S., F.G.S., F.S.A., &c., High Elms, Farnborough, Kent.  
Rev. Prof. SEDGWICK, M.A., L.L.D., F.R.S., &c., Trin. Col., Cambridge.  
Prof. PHILLIPS, M.A., L.L.D., F.R.S., &c., Oxford.  
Col. A. H. LANE FOX, F.G.S., F.S.A., Hon. Sec., Eth., S, 10, Upper Phillimon Gardens.  
W. MORRISON, Esq., M.P., Malham Tarn, Settle.  
U. J. K. SHUTTLEWORTH, Esq., M.P., Gawthorpe Hall Burnley.  
JAMES FARRER, Esq., F.S.A., &c., Ingleboro', Settle.  
JOHN BIRKBECK, Esq., Anley, Settle.  
JOHN BIRKBECK, Esq., jun., Bankwell, Settle.  
R. S. BIRKBECK, Esq., Anley, Settle.  
Rev. H. I. SWALE, M.A., Ingfield, Settle.  
Rev. W. F. PIERSON, M.A., Parsonage, Settle.  
C. DEIGHTON, Esq., M.D., Clapham, Settle.  
W. BOYD DAWKINS, M.A., F.R.S., F.G.S., Owen's College, Manchester.  
THOS. STACKHOUSE, Esq., Taitlands, Settle.  
Rev. W. H. COULTHURST, M.A., Bowerley, Settle.  
Rev. G. STYLE, M.A., Head Master, Grammar School, Giggleswick.  
Rev. THOS. LEACH, M.A., Thornton, Settle.  
C. JEAFFRESON, Esq., M.A., The Grammar School, Giggleswick.  
E. S. GREEN, Esq., Settle.  
HECTOR CHRISTIE, Esq., Langeliffe Place, Settle.  
[P. T. O.] JOHN BIRKBECK, JUN., Hon. Sec. and Treasurer.



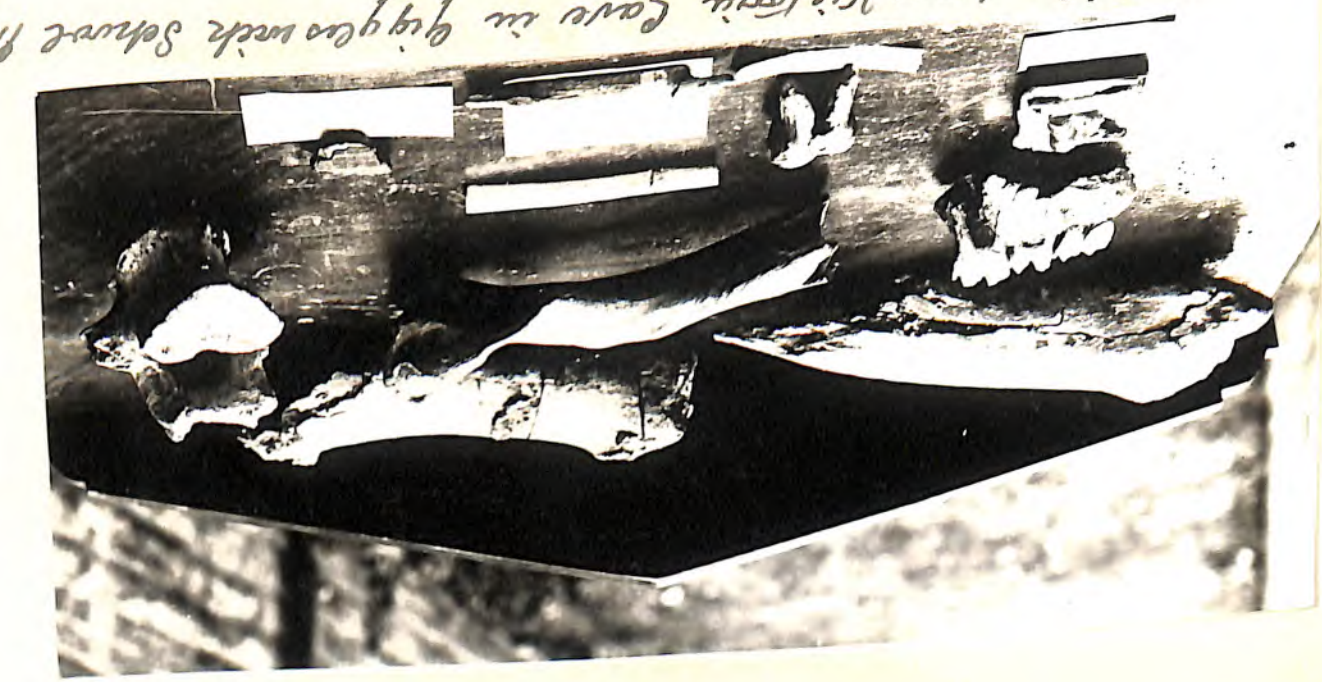
of his presence may have been cleared away from the open country by the great ice-sheet. All we say is, that the Cave knew him not, or he knew not it; or he knew too little of it to be able to write his name in the earliest pages of its wonderful book.

The easiest walk from the Cave to Settle is Back to Settle. On leaving the Cave we turn to the right, and keep along the wall-side until we reach a small gate; pass through this and at once turn to the left round the sheep-fold and through the gate in the corner. The cart-track can now be easily followed down the hill until the Langcliffe-Malham road is reached.

Many of the "finds" that we have spoken of, are to be seen in the Museum of the Gigglewick School, and a visit to that Museum would make this walk complete.



4  
Finds  
post-card



Articles from Victoria Cave in Egyptian and Schöner Museum



Victoria Cave  
Two finds found close to the entrance; at a depth of 17 feet, on the same layer as the hammer

Victoria Cave  
Best find  
Victoria Station



IV.  
GIGGLESWICK.

MUCH of what we have said as to the position and surroundings of Settle, applies also and equally to Giggleswick. The two places are close by, almost within shouting distance of each other. The river divides the two townships,—the line of division passing through the crown of the bridge. The two places have much in common. Each owes something to the other. Settle is the shopping town, and it supplies Giggleswick with water and, in partial—in very partial—measure, with gas. On the other hand, Settle youths have for generations wended their way to Giggleswick to be drilled in classics and mathematics; and the way-side sycamore, called the "Parish Umbrella," reminds us of the time when the people of Settle had to walk over to Giggleswick for spiritual light and food.

Its Patron Saint. The picturesque name of this picturesque village has, of course, come under the philological dissecting-knife. The general idea is that it was originally *Ghikelswick*, the village of Ghikel. Some have derived the name from the A. S. *gugglian*, and think that it was suggested to the first settlers by the phenomenon of the Ebbing and Flowing Well. This is in more than one sense far-fetched; and it would perhaps be as near the mark to say that the place was thus named because its early inhabitants

*Cont<sup>d</sup> on p. 147.*



*Bell Hill, Giggleswick.*



*Road between "The Mains" and Cathedral Hall.*



1835

**JOHN WALKER,**

**Black Horse Inn,**

GIGGLESWICK.

	£	s	d
BREAKFAST.....			
Dinner.....			
Supper.....			
Wine and Negus.....			
Brandy.....			
Rum.....			
Shrub.....			
Gin.....		3	6
Ale and Porter.....		1	6
Cows' Hay and Grass.....			
Sheeps' Hay and Grass.....			
Horses' Hay and Corn.....			
Bed.....			
Washing.....			
Tobacco.....			
<b>Total</b> .....	<b>£</b>	<b>16</b>	<b>0</b>

(WALKER, PR. SETTLE.)

August 10<sup>th</sup> of Letting the under Ten<sup>ant</sup>

1835

**R. GABSTANG,**

**The Hart's Head,**

GIGGLESWICK.

	£	s	d
EATING, &c.....			
Tea and Coffee.....			
Rum, Brandy and Gin.....			
Punch, Wine and Negus.....			
Ale, Porter and Tobacco.....			
Cyder and Fruit.....			
Paper and Postage.....			
Washing.....			
Servants' Eating and Ale.....			
Horses' Hay and Corn.....			
Beds and Chamber Fire.....			
Beasts, Sheep, &c.....			
Waiter and Chambermaid.....			
Ostler and Boots.....			
Blacksmith and Saddler.....			
<b>Total</b> .....	<b>£</b>	<b>16</b>	<b>6</b>

(WALKER, SETTLE.)

August 10<sup>th</sup> of Letting the under Ten<sup>ant</sup>

For "Hart's  
Head" bill  
for 1797 see  
Vol 3 p. 222.

For bill of  
1806 see page  
115 of this vol.

Price for 1789  
page 6



The old "Hart's Head" Inn.



Stockhouse Lane.





20412. Giggleswick Church.

From "The Mains".

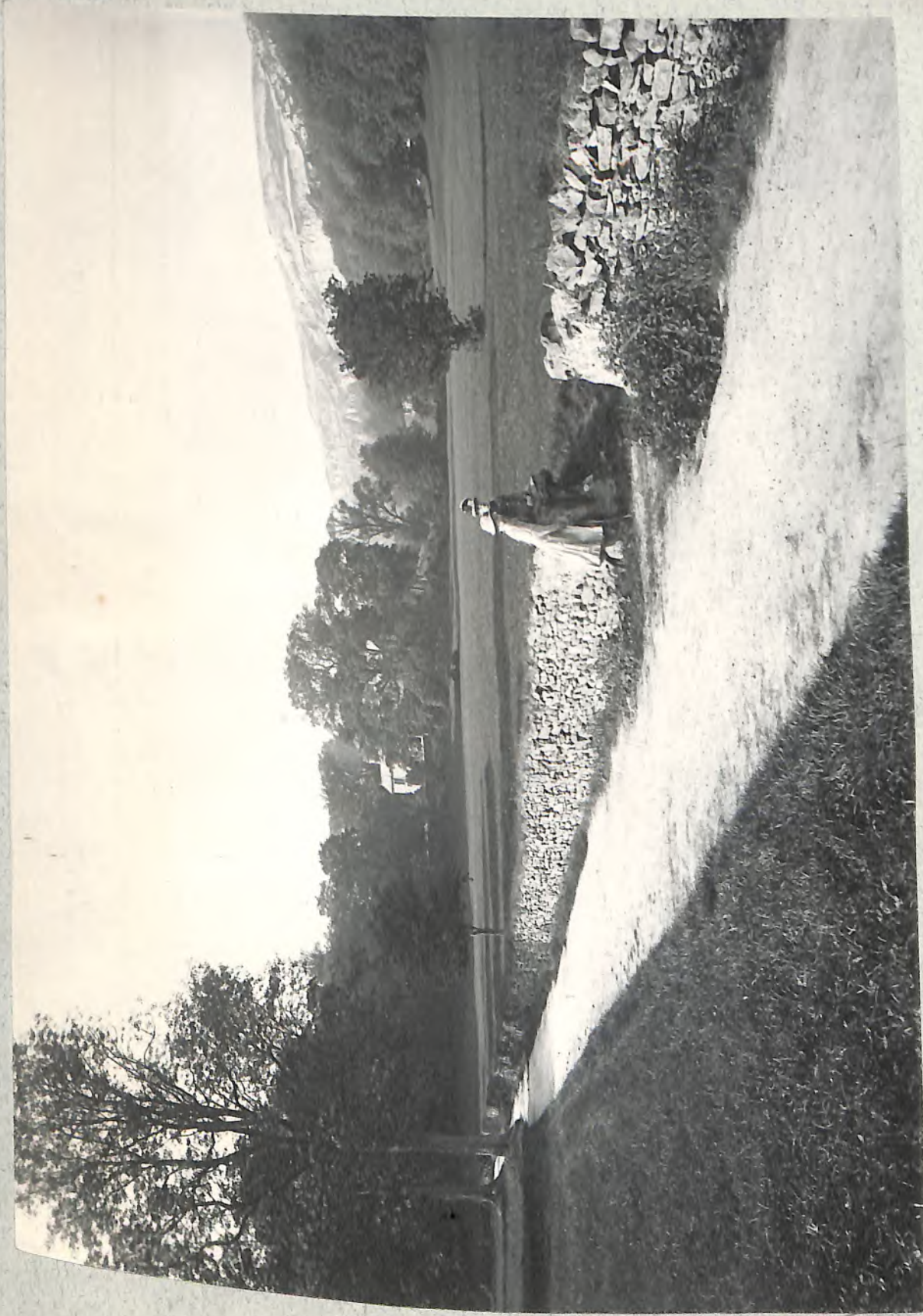


"Eventide".



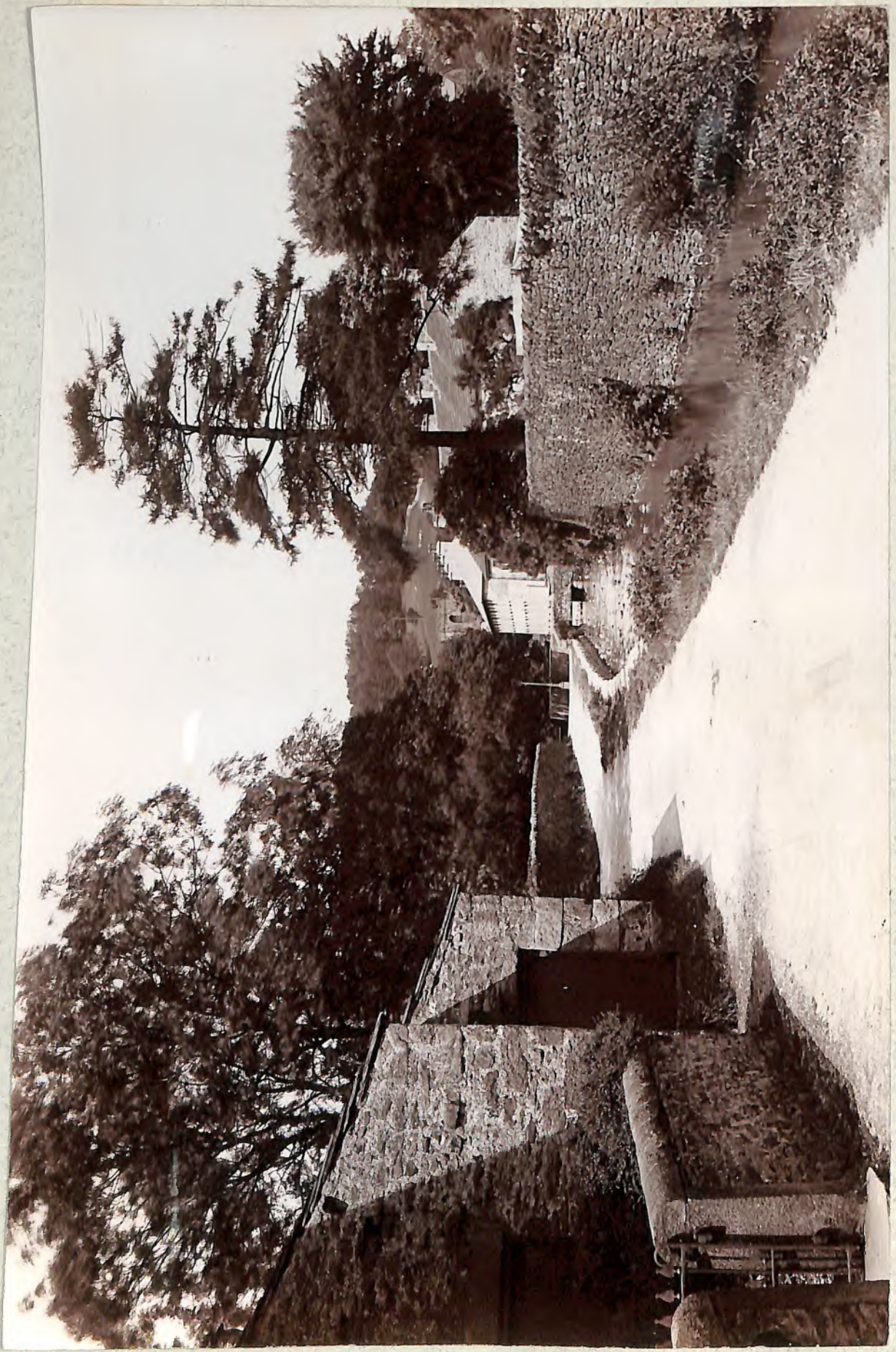


*From field near Dalliar Lane.*



*"Lovers' walk" and Catteral Hall.*





Teno St. Giggleswick.

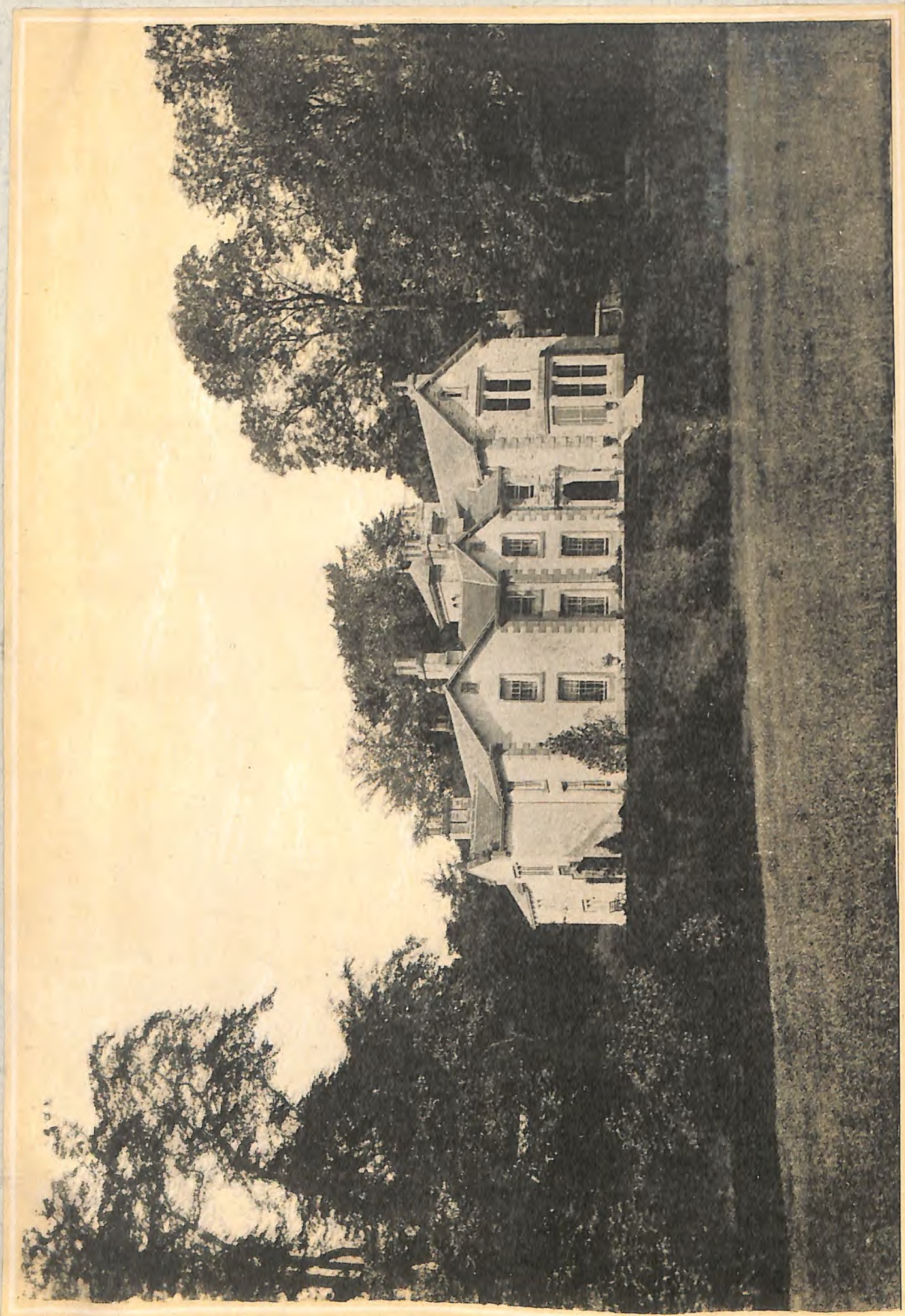


"The Cross,"  
Giggleswick.

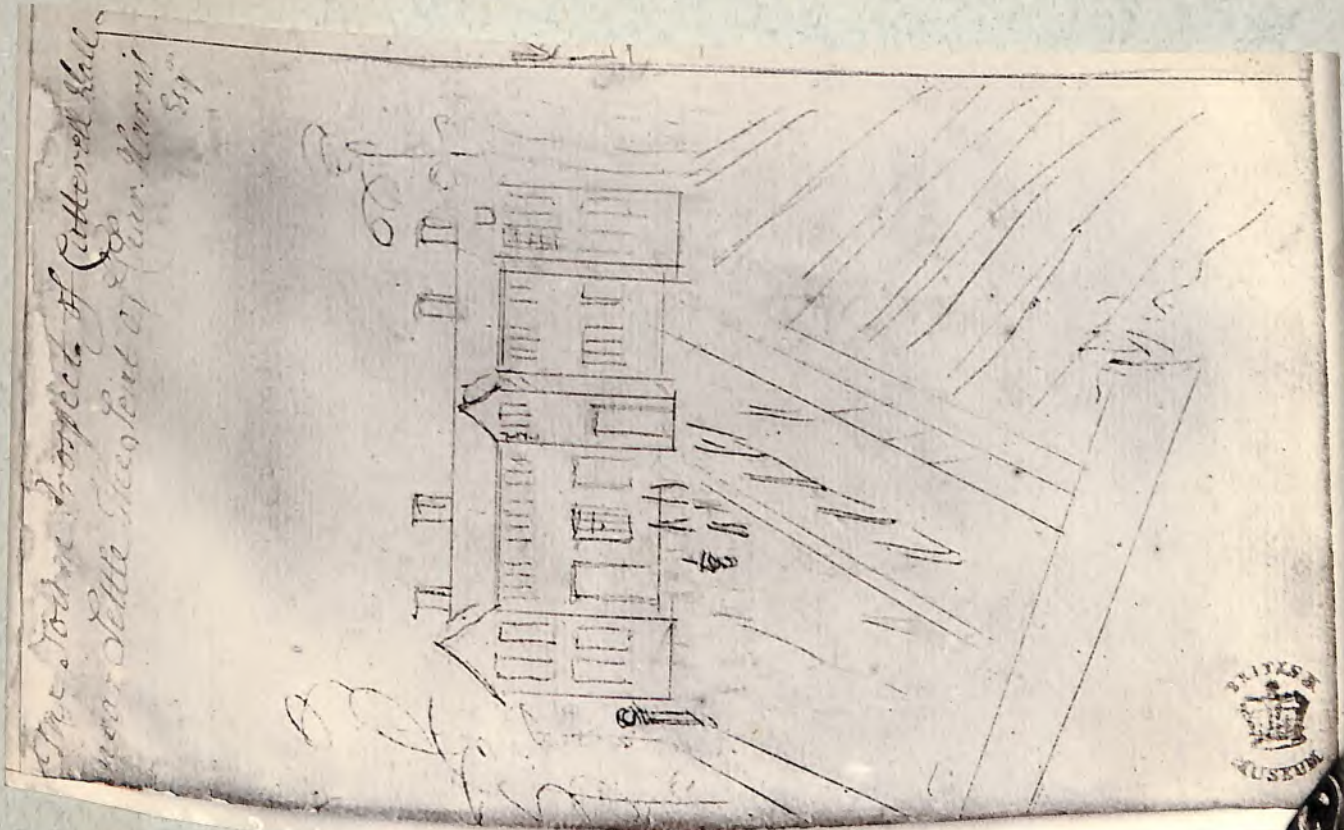


The "Parish Umbrella."





Catteral Hall.



The stone project of Catteral Hall  
near Little Scotland of New York  
5/9



Catteral Hall.





— VIEW OF CATTERAL HALL —



*From "The Mains".*





Barn, (now dwelling-houses,) near Tems Beck.



Cottages on "The Steps" in process of re-roofing, &c.



The old Brewery, near Giggleswick Station, showing rats taken from building.



"Armistead Stall."





GIGGLESWICK.

Cottages on "The Steps" after restoration -



Arncliffe Hall.



"Brookside" in winter



"Tens Beck" *atensbeck*