

Q 36

Horton quarry.
An early view (1920's?) showing clearly
the first two kilns.



Q 20

Horton quarry.
Building the round kilns (1940's)
which are shortly to be demolished.
(March 1985)



Q37.

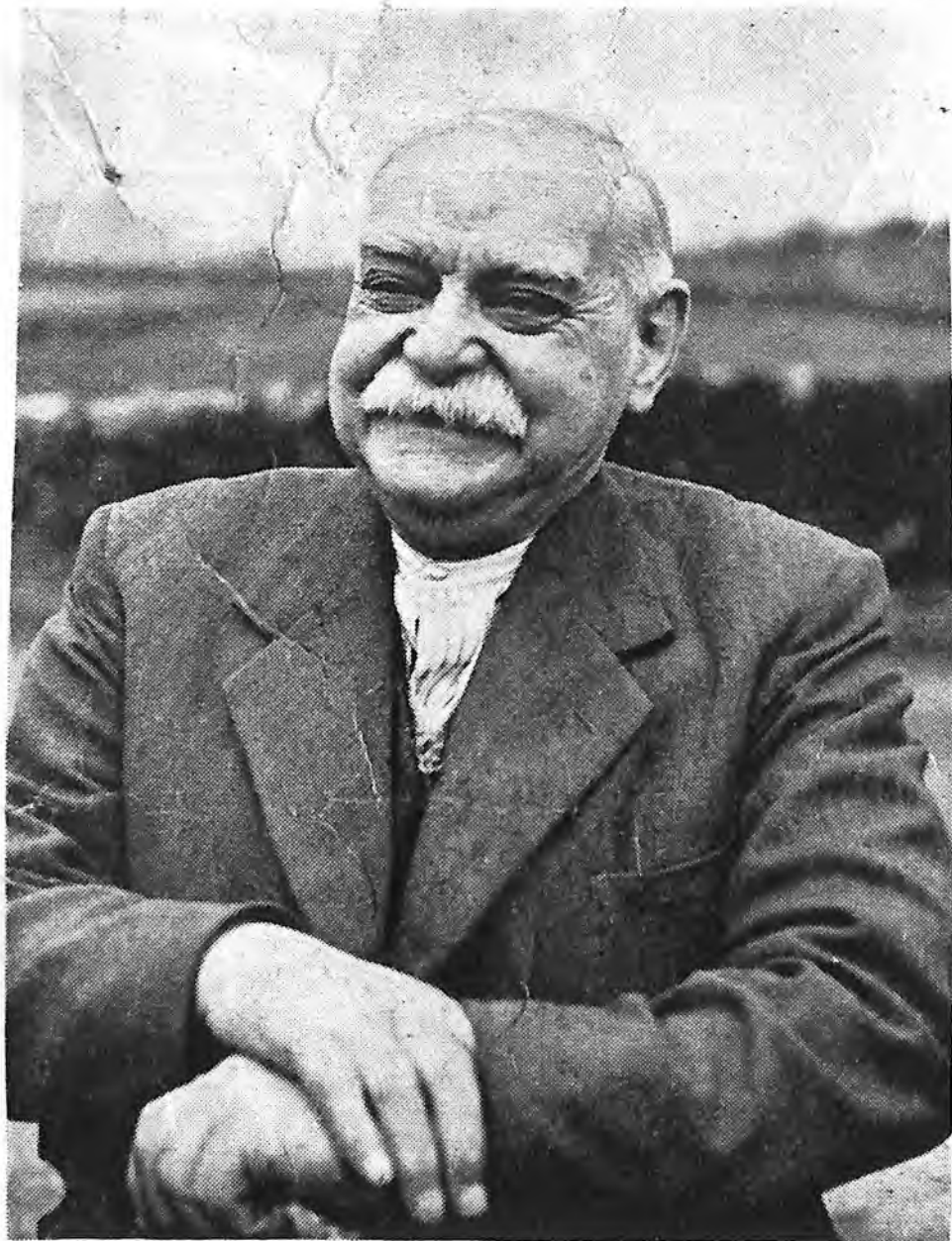
Hoston quarry.

Building in the centre was the engine house for the endless rope. First two of the metal kilns. (later increased to four). One of the old kilns behind



T019.

Photograph taken in 1984 of the
ruins of the Turpeh hut shown
in T04



As fit a looking 83 year old as you can wish to meet, Fred Dicken now enjoys a well earned retirement after 60 years' hard work in the quarries.



Q28

Q28

Detonating the charge for one of the big blasting sessions. Holton quarry. 1930s



H75

Stone used for pressing
cheese. Outside Townhead



T08 an unusual
sunken stone
butt on Horkow
moor



The village football
TO18 Team 1930-31



1917

The village football
team early this
century



T016

The village
football team,
1921-22.



HG 1

In Horton
Church
1984



Exhibition in
HG2 Horton church 1984
Briefing prior to opening



HG3 In Horton
Church
1984



H19

China cupboard at
Brackenbottom farm



H76

Fireplace at
4. South View



PENYGHENT, FROM HORTON IN RIBBLESDALE STATION.

H38

An early view
of station bottom



H80 Bridge over Brants
Ghyll.
1984

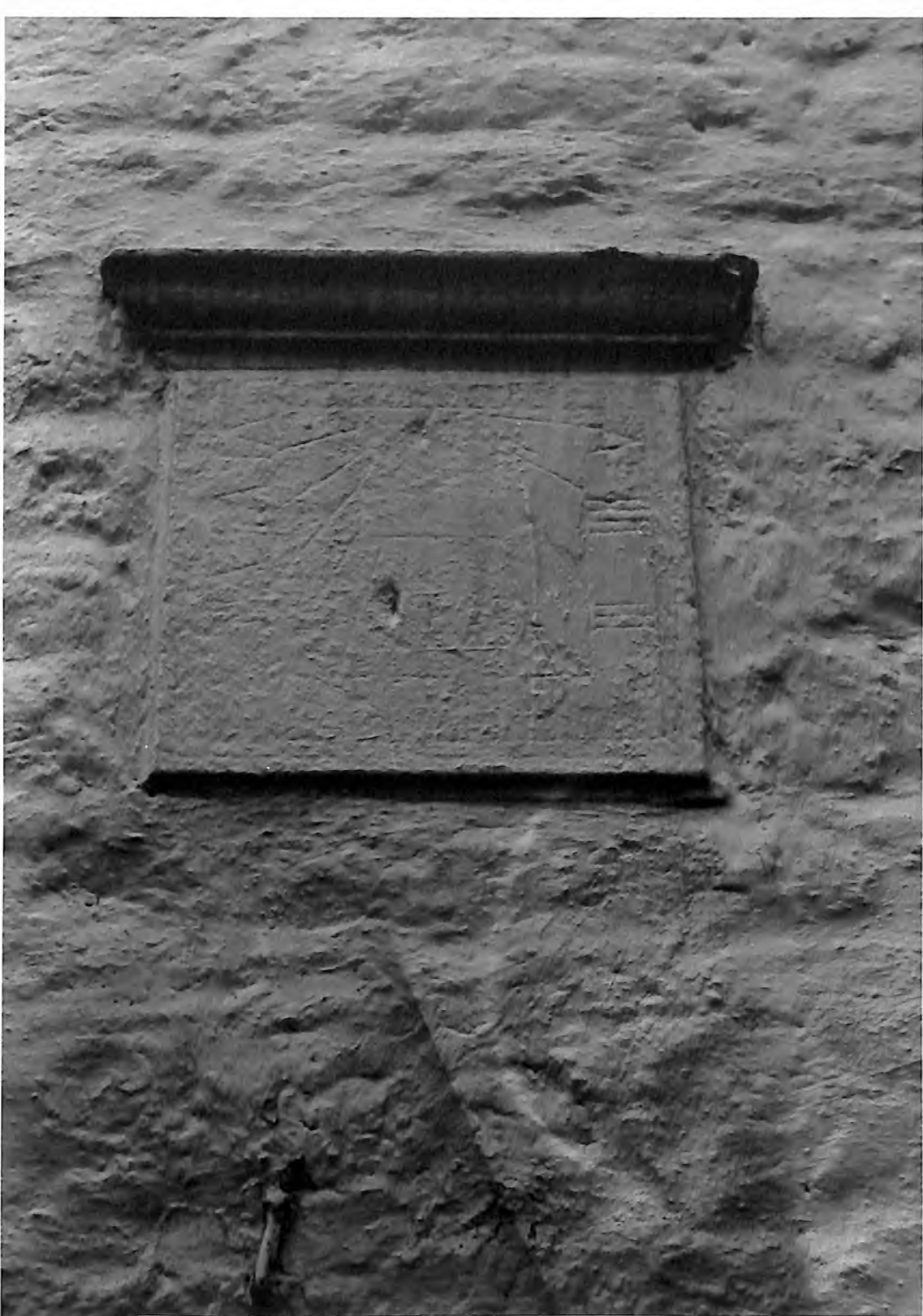


H77

South View.

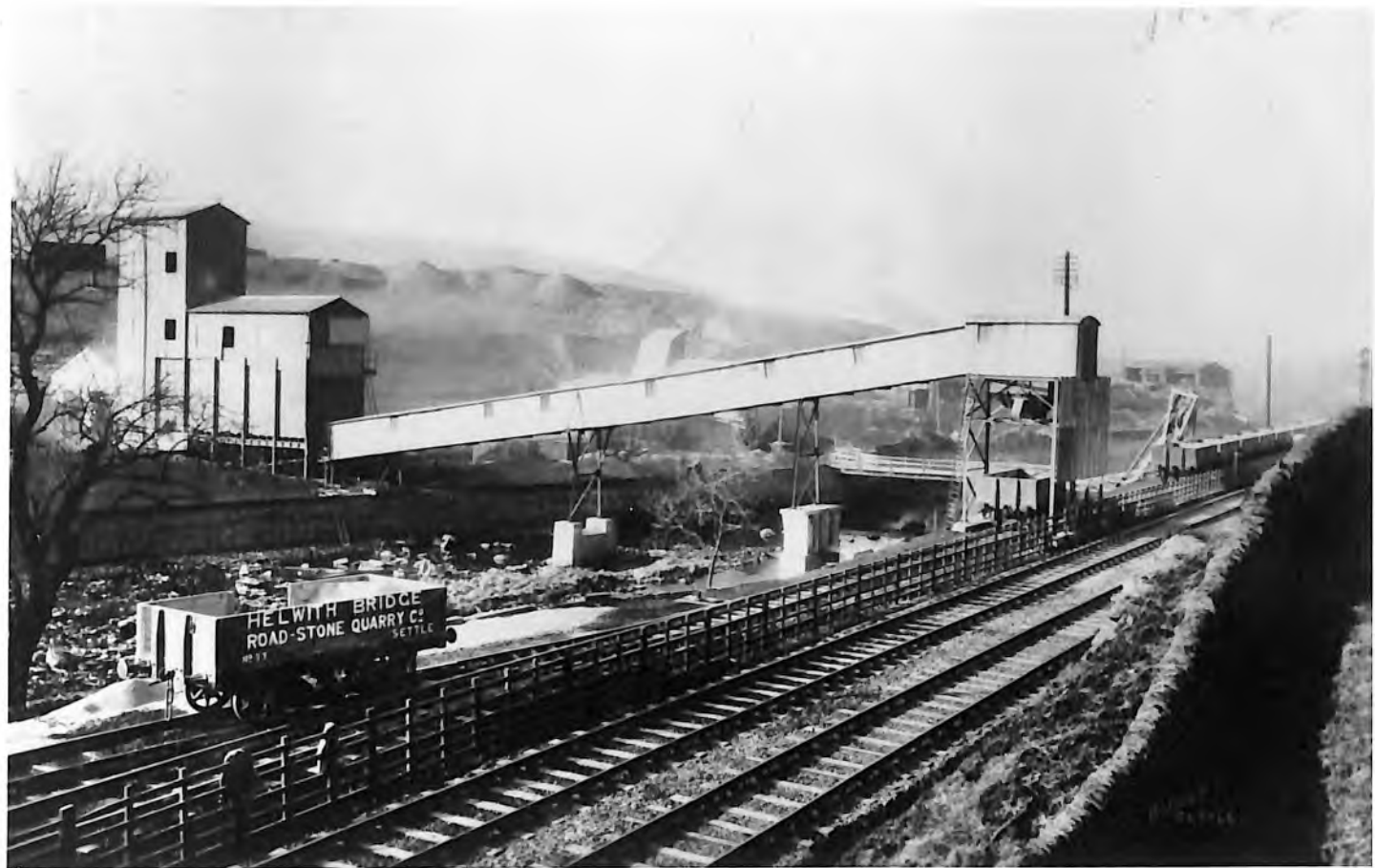
Early 1970's





H78

Sundial on Foxwood
School house at
Newhouses











Lady in white scarf above bench
wheel is MRS DIXON who lived
on Butts Hill.

Man in flat cap standing at
back is GEORGE MILLMAN.

Woman in white hat at back is
Jane Anne BAINES

