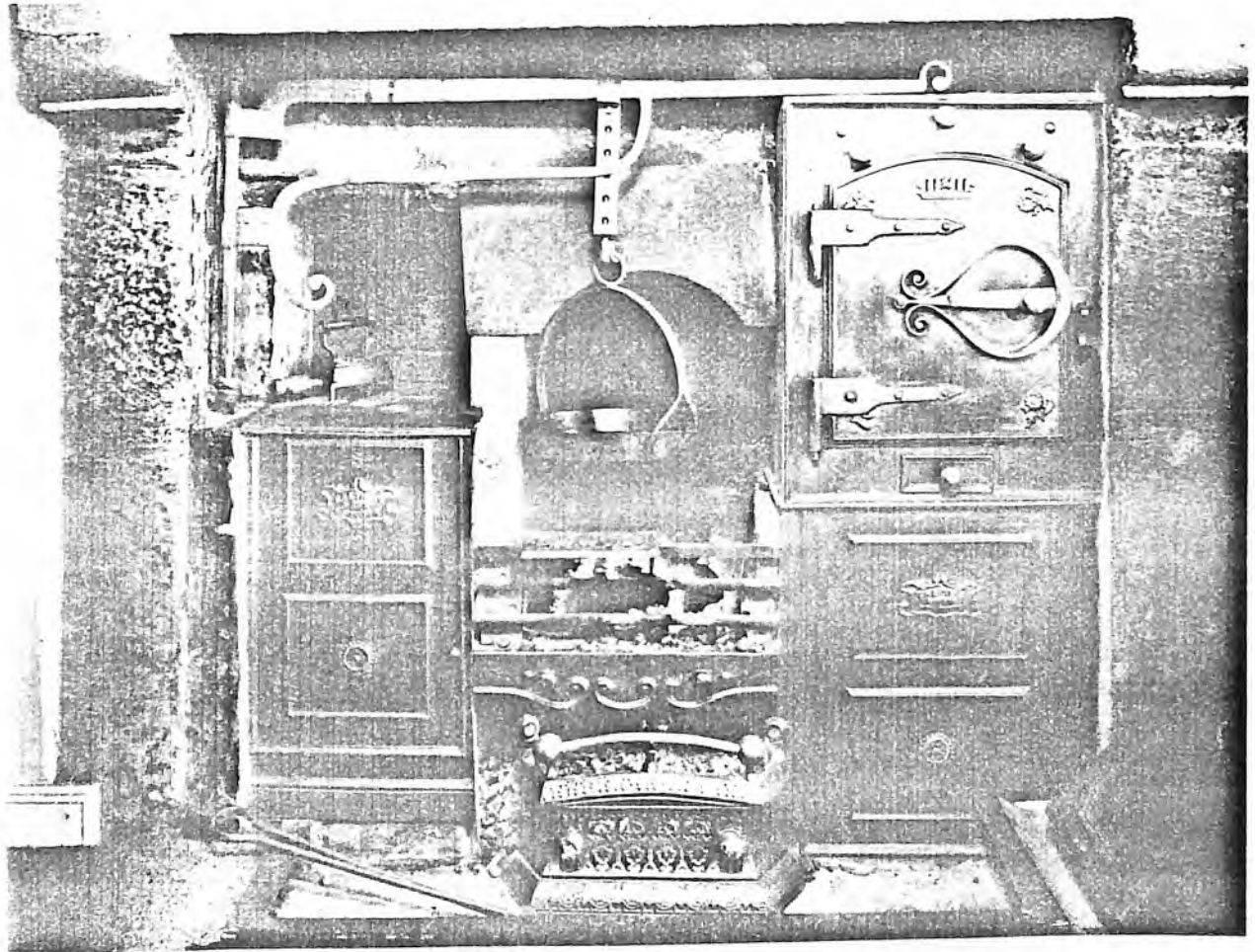


HORTON IN RIBBLESDALE, Hoyle Cottage, 4 South View. Kitchen range.

Photograph the property of the owner, Miss S. Haywood.



STOCKS, Horton in Ribblesdale.



Now situated in front of Horton School, though this was not their original siting.

Larger photograph in file.



6-29  
Studfold SD 813702

Stuccoed stonehouse lying lower than the road and end-on to it, facing southeast. It has tall sash windows framed in stone blocks and an arched doorway covered by a wooden porch. New rainwater goods. No particular architectural value, but prominent site. A better house of the early 19th century is found at Dry Beck.

Below Studfold House is a plain, rendered stone farmhouse, group value.

Studfold Cottage demolished for road widening, datestone said to have been built into a garden wall but now lost.



Larger photograph in file, plus NYVB Report 947.

NORTH YORKSHIRE (W.R.)

NORTH YORKSHIRE  
AND CLEVELAND  
VERNACULAR BUILDINGS  
STUDY GROUP 947

HORTON IN RIBBLESDALE, Studfold Farm. Mr and Mrs Campbell. visited  
SD 813702 29-9-83

This stone-built, two-storey farmhouse stands below the main road facing south, with behind it a lane leading down towards the river. There are barns and shippons between the lane and the farmhouse, and a small garden in front of it. The walls of the house are cement-rendered throughout and the roof tiled with modern cement tiles. Only details were measured, so the overall shape of the sketch plan may be incorrect.

The yard side of the house (north) has four windows with a staircase window between storeys in the middle. The windows have wide, slightly projecting, cement frames, and there is a vertical band of the same material down the northeast corner of the wall. Four pieces of stone mullion are set in the wall near the top as gutter brackets, but the present gutters are fixed a little higher with modern metal brackets. The east end wall is largely concealed by a stable built against it and enclosing the rear of a big chimney on the east end of the house; the stable had a loft over, reached by steps on the south side, but the roof decayed and has been replaced at a lower level. High up at the south end of the east wall of the house rough stonework projects as if some structure has been removed, but this is beyond the line of the stable. At one time there was a way through from the upper floor of the house into the stable loft, but no sign of this remains.

The south side of the house has a modern ground-floor window on each side of the door, and above there are three tall, narrow windows, the middle one not so tall as the others. At the west end is the leanto back kitchen with a modern window. A two-seater privy has been built against the far west end, its ash-pit now cleared away. The back door is in the north side of the leanto, with a loft window above it.

There are three chimneys to the house, and a disused flue in the southwest corner of the back kitchen.

The house is entered by the back door into the back kitchen. This originally had a setpot and an oatcake oven in the southwest corner. The window was very small, no bigger than 2 ft square, and has been replaced by a modern window about the same size as the other ground-floor windows. A wide opening has recently been made in the east wall for use as a hatch, which links the two rooms visually. There are three substantial ceiling beams, each with one waney side, the third beam very close to the south wall.

The living room has a fireplace in the east wall which originally had a flat lintel but has recently been rebuilt with an arch. There was a bread oven in the southeast corner, but it was too badly worn to preserve. The ceiling beams are modern RSJ's cased in softwood, dating from the time the floor above was rebuilt. In the southeast corner of the room is a shelved recess which was once a doorway; in the other front corner there was once a slopstone. The floor is flagged. In the north wall is a modern doorway through into a dairy with slate shelves which have drainage holes for drawing off the whey in cheesemaking. The window has two narrow lights divided by a square cement-rendered mullion. A doorway leads east into the space under the stairs and there was formerly another door leading through to the stairs, which was the original way into the dairy.

A doorway through the very thick east wall leads into the sitting-room. There is a fine stone-framed fireplace on the east side of the room, with two flues for a bakstone on the north side of the fireplace and two bread ovens lined with brick in the back of the hearth. The stone lintel was carried very slightly forward of the jambs which turn outwards at the top, but the original lintel was broken and has been replaced, and a new grate built. There are two very deep (32cm) oak beams across the ceiling, an exact pair probably split from a single tree, arched

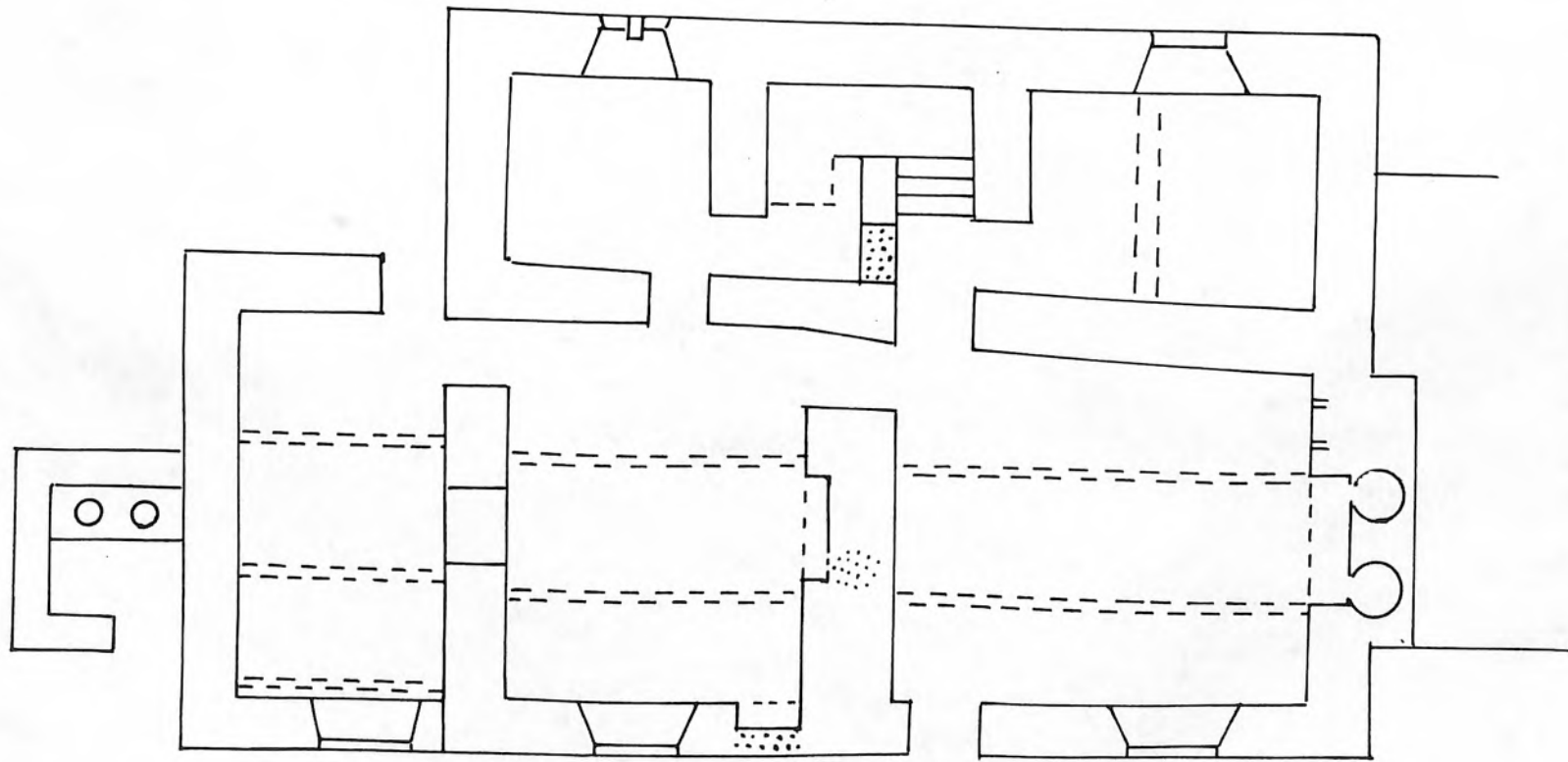
towards the fireplace end. They have well cut cyma chamfer-stops at both ends. There used to be a partitioned-off passage leading from the front door towards the stairs but the chamfer was not stopped for this and the partition has now been removed. The stone stairs lead off from the north side of the room, with a blocked door left and on the right a door into a capacious pantry with a thick and well-squared ceiling beam. There is a half-landing with a north window, and a landing at the top of the stairs. There is a bathroom over the dairy and a small bedroom above the pantry; in the front part of the house up one further step there is a bedroom over the livingroom, with a chimneybreast against the east side where the ground-floor fireplace has its flue, and on the west wall an early 19th century fireplace which has its own chimney. Another doorway (now without a door) leads into a passage with two bedrooms divided by light partitions. Neither is heated, but the east end room has a large slate slab set in the floor in front of the chimney from the sittingroom fire; possibly at one time an independent fireplace and chimney were built for this room in front of the existing stack, and have later been removed when the room was divided into two.

The roof is modern.

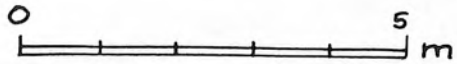
#### Historical Interpretation

The design of Studfold Farm is said to resemble Crooks Hall (at about SD 809717) which I have not yet seen; it also resembles Sherwood House (546) which lies an equal distance away to the south and is almost exactly the same size though without the added back kitchen. Sherwood House has three chimneys, but it is the central one that heats a bedroom and the downstairs rooms each have an end chimney. Studfold Farm has had mullioned windows, since apart from the pieces showing in the back wall other fragments have been found reused in the fireplaces and lying in the grounds. I suggest the house was built later than Sherwood House (which has a 1703 datestone), perhaps about 1750; but in view of the irregular shape of the house this would probably be a reconstruction on earlier foundations. An earlier house must have been only one room thick, i.e. the stairs, dairy and pantry would be 18th century additions.

Barbara Hutton.



3



sketch plan

684

NORTH YORKSHIRE  
AND CLEVELAND  
VERNACULAR BUILDINGS  
STUDY GROUP. 959

NORTH YORKSHIRE (W.R.)

HORTON IN RIBBLESDALE, Studfold Cottage (dem), SD 813701. 1984.

This cottage, which was demolished some years ago although a listed building, stood close up to the main road which curved round it on the east side. The house faced south and stood on a sloping site so that the road was at a higher level than the house floor. It was built of stone rubble mortared over and limewashed, with a slate roof and a ridge and chimneys of stone. The plank-built front door was set in a moulded frame under a carved lintel inscribed I.P. 1679. John Procter of Studforth whose will was proved in 1707 seems a likely candidate. There were four front windows and the door was slightly off-centre to the east, whilst the space between the eastern windows and that end wall was wider than at the west end, suggesting that the eastern room had the larger fireplace and the front door may have opened straight into that room. A downpipe from the gutter led into a large trough built of stone slabs to collect rainwater.

On the road end there seems to have been one upper window towards the rear, and a rectangular projection at ground level behind the hearth area possibly indicating the position of a bread-oven. A leanto outshot of one storey appears to have been added along the rear or part of the rear wall, its eastern end not quite in line with the main part of the house. The back and western end do not appear in the photographs

The house was demolished in order to straighten the road which formerly curved round it. Part of the house platform appears to remain as a pull-in or lay-by to the road, and the lintel has been built into the boundary wall.

*No. House on level of present lawn.*

Barbara Hutton.



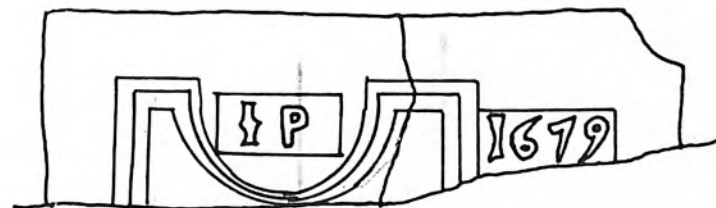




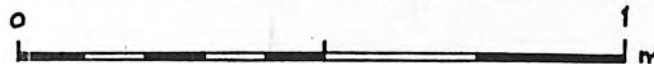
Dated doorhead over cottage at Studfold. Removed for road widening in the 1960's.

The datestone IP. 1679 seem to refer to John PROCTOR who left a will dated 1707. He does not mention the house but a later will, that of Matthew PROCTOR proved in 1782 gives details which would fit the house.

This Matthew PROCTOR is described as a tanner. Christopher LANGSTROTH is mentioned in 1779 he lived at Studfold and was a cooper. Both would need to be near the river.



Doorhead measured 7-3-84



2

Cottage at Studfold (Roche's) from two photographs 1963

SD 813701

drawn to a scale of 1:100 approx.

PM 1983

Townhead Farm SD 812722

This substantial, low-set farmhouse has a storeyed porch in front incorporating a dairy, which has an ovolo-moulded doorway in the side facing south, and rebated splayed mullion windows in the gable-end facing east towards the beck. The lower porch window has one light with a dripstone over it returned down each side, the upper is a three light 'West Riding' window with a taller central light. On the house itself, the window of the houseplace next to the porch has a king-mullion with two-lights south of it and three-lights north, all rebated splays but two of the mullions missing. The glazing is well arranged in small panes, and there is a dripstone over. The window above this has three-lights and was similarly framed but has lost both mullions. South of this is a plain vertical window in a frame adapted from a two-light mullioned window like those described and a blocked two-light window over it; beyond are two tall windows framed in flat stone blocks. The drip course continues intermittently. On the north side of the porch there are two doors and an upper window in the house, all late, and a further bay of outbuilding, all under a continuous stone roof. At the back there is a staircase wing with rebated splayed window. The barn attached at the south end is sunk into the bank behind, and has an iron roof but is of considerable group value.



Large photograph in file.



Cheese Stone at Townhead Farm.

0-22

Town End Farm SD 810720

The house stands at the southern end of the church town (i.e. central settlement) of Horton, facing southwest with a laithe built onto its east end. It is a two-room wide house built of coursed limestone rubble with a central doorway inscribed <sup>A</sup> 1735 and a handsome stepped external chimney on the west end. The windows are framed in reused stone blocks and the doorcase is plain with a plain lintel. The roof is stone. The laithe is largely built of Horton flags. Behind the house and barn a modern bunkhouse has been sensitively added as a leanto.



Larger photograph in file.

050

Town End Farm (2).



Chimney Stack, Town End Farm.  
Larger photograph in file.



1A1135





200

HORTON IN RIBBLESDALE

15/2 (20/15) ✓

Rowe Farmhouse

- 20. 2. 58

II

Farmhouse: Dated 1723 with C19 and C20 alterations. Watershot limestone masonry, millstone grit dressing, stone slate roof. 2 cell plan. 2 storeys, double fronted. Central entrance has roll moulded surround, decorated lintel inscribed IL 1723, dripstone; C20 door. 2 chamfered windows with ovoid mullions per storey: 4 lights to ground floor, formerly 3 lights to upper floor, now 2 lights each with only one repositioned mullion; casement and fixed lights. Gable end and right of centre ridge stacks. At rear is C19 outshut to house staircase. Interior: Left-hand room contains C18 fireplace with corbelled mantle. 2 massive spine beams.

---

HORTON IN RIBBLESDALE

12/3 and 15/3 (20/16)

Blindbeck Farmhouse  
and Cottage

- 20. 2. 58

II

Farmhouse and cottage. Late C17 with C18 and C20 alterations. Slobbered coursed rubble, stone dressings, stone slate roof. Lobby entry plan. 2 storeys, 4 bays. Left of centre gabled porch in early C18, chamfered surround, Tudor arched head; small chamfered window in gable. To left: ground floor 2-light double chamfered mullioned window, and 3 light double chamfered mullioned window with hoodmould; upper floor, 3 light chamfered mullioned window. To right: ground floor 3 light double chamfered mullioned window, now with flat faced mullions, and remains of further blocked light; upper floor 3 light double chamfered mullioned window. Right-hand bay is now the cottage: c1970 entrance porch with lean-to roof abutting former 3-light chamfered mullioned window, now 2 lights with only one mullion remaining. Casements and fixed lights. Upper floor 3 light double chamfer mullioned window. Right-hand gable end, left-hand, and massive left of centre ridge stacks. At rear is C18 wing. Interior: front left-hand room contains late-C17 fireplace, chamfered surround with 2-piece Tudor arched mantle. Front right-hand room contains early C18 fireplace with cupboard inscribed SW 1659. Upper floor re-set oak cupboard inscribed TH (Thomas Howson) 1697.

HORTON IN RIBBLESDALE

BRACKENBOTTOM

15/5 (20/25) ✓

20.2.58

Bradford Potholgers' Club, (formerly listed as Mr Dixon's House west of Mr Greenbank's House)

GV

II

Formerly farmhouse, now house. Late C17, refronted mid to late C18 with late C18 right-hand bay and C20 alterations. Squared limestone watershot rubble, millstone grit dressings, slate roof. Formerly 2 storeys, double fronted, now 3 bays. Formerly central entrance has plain surround, c1970 door. 2 ground floor and 2 upper floor windows: 3 light flat faced mullioned; C20 casements and fixed lights. Ground floor date drip mould. Right-hand bay contains right-hand entrance, plain surround and c1970 door. To left is ground floor window, c1970 and upper floor 3 light flat faced mullioned windows; C20 casements and fixed lights. 3 rows of projecting slate throughs. Left-hand gable end, former right of centre and former right-hand gable ridge stacks. Late c17 window to rear include; 3 light chamfered mullioned and similar right-hand ground floor double chamfered but mullions now missing. On upper floor are 2 former 2-light chamfered mullioned window with square caps, mullions missing. Central C18 staircase window with transom. Front right-hand room contains c1800 kitchen fireplace with corbelled mantle. Upper floor bedroom contains c1800 fireplace with moulded imposts and mantle.

---

HORTON IN RIBBLESDALE

BRACKENBOTTOM

15/6 ✓

Green Gates Farmhouse

GV

II

Farmhouse. Dated 1781 with early C18 origins and C20 alterations. Squared limestone rubble, millstone grit dressings, stone slate roof. 2 storeys, 2 bays. Central entrance has plain surround on square bases, lintel inscribed IF EF 1781; nine panel door. 2 ground floor and 3 upper floor windows, plain projecting surrounds, sashes with glazing bars. Shaped kneelers and coping. Shaped eaves modillions. Gable end ridge stacks. Rear entrance has moulded surround and lintel inscribed:

F

17 TA 12

One ground floor and 3 upper floor windows reusing early C18 double chamfered surrounds. Ground floor left-hand 2-light double chamfered mullioned window.

---

HORTON IN RIBBLESDALE

11/1 (20/48)

Beecroft Hall

- ✓ 7.4.83

II

Formerly farmhouse, now unoccupied. Late C17/early C18 with C19 alterations. Limewashed squared rubble, painted stone dressings, stone slate roof. Central staircase plan. 2 storeys, 2 bays with additional mid-C19 gabled left-hand bay. Formerly central entrance has plain surround, 4 panel door, upper 2 glazed. 2 large ground floor windows now boarded, but reputedly 3-light mullioned and transomed. Two upper floor windows formerly 2-light chamfered mullioned, now single light with mullions missing, C20 casements. Mid-C19 upper floor window to left-hand bay has sashes with glazing bars. Gable end ridge stacks. Right-hand return contains 3 rows of throughs and a round window. Ring includes 3 rows of throughs, ground floor and upper floor former 2-light chamfered mullioned windows now single lights with mullions missing, and 2-light chamfered mullioned stair window between floors; all 3 have slate hoods and 2-pane casements. Interior reputedly contains a moulded doorhead and an early C18 dog-leg staircase with closed string, turned balusters and moulded handrail.

---

HORTON IN RIBBLESDALE

12/1 ✓

Fawber Farmhouse

II

Farmhouse. Early C18 with C19 and C20 alterations. Rendered, stone dressings, stone slate roof. Central staircase plan. 2 storeys, 3 bays. Central entrance in gabled porch, c1970 plank door. All windows are boarded, but in 1979 were recorded as follows: ground floor right-hand mid-C18 3 light flat faced mullioned; left-hand ground floor and 2 upper floor 3 light scoble chamfered mullioned. Gable-end ridge stacks, that to right projects. Continuous outshut at rear contains mullioned and transomed 2-light stair window, now blocked.

15/4 ✓

Bracken Bottom Farmhouse

GV

II

Farmhouse. Late C17 with C18, C19 and C20 alterations. Limewashed rubble, stone dressings, stone slate roof. 2 storeys, 4 bays. Gable end to street: central entrance has plain jambs, projecting impostes and basket arched lintel, 6 panel door. Right-hand ground floor and upper floor 3-light recessed flat faced mullioned window; date dripstones and C20 casements. Garden front: Right of centre entrance is mid C20 lean-to porch. Left-hand 4 light recessed flat faced mullioned window date dripstone, 2 pane casements and fixed lights. Right-hand ground floor large, late C19 2-light recessed flat faced mullioned window, sashes with glazing bars. On upper floor: left of centre 2 light recessed flat faced mullioned, right hand former 3, now 2 light double chamfered with only left-hand mullion remaining, right hand single light, probably originally 2-lights but with mid-C19 wurrund; casements and fixed lights. Left-hand shaped kneeler and coping, left-hand gabled end, left of centre and right-hand stack at gable end of C19 heightened part of farmhouse. Interior: ground floor right-hand room contains dado and c1780 panelled end wall incorporating 5-panel doors and remarkable cupboard with segmental curved back keyed round arch and shaped shelves. Fluted Doric pilasters and full entablature with paterae in metopes. Scrolled pediment enriched with egg and dart to soffit, paterae to scrolls flanking pineapple within vase. Dentilled cornice. Moulded plaster ceiling, probably early c18 with plaster overmantle of similar date.

---

HORTON IN RIBBLESDALE

BRACKENBOTTOM

15/7 ✓

Keeper's Cottage

GV

II

Farmhouse. Mid-C18 with C20 alterations. Slobbered, square rubble, millstone grit dressings, slate roof. Central staircase plan. 2 storeys, 3 bays. Central entrance has plain surround, early C20 door. 2 ground floor and outer 2 upper floor 4 light windows, central upper floor 2-light windows, all have flat faced mullions and moulded surrounds, C20 casements and fixed lights, dripstone to ground floor. Gable end coping and ridge stacks. Left-hand return contains upper floor 2-light flat faced mullioned window with moulded surround, C20 casements; 2 similar windows at rear one 2-light, the other 4-light.

---

HORTON IN RIBBLESDALE

FOREDALE

13/1 (20/18) ✓

Foredale Farmhouse

- 20.2.58 ✓

II

Farmhouse. Dated 1731 with C20 alterations and C17 origins. Pebbledash, painted stone dressings, slate roof. Lobby entry plan. Rear to street. 2 storeys, 4 bays. Garden front: 2 storeys, 3 bays. Right of centre 2 storey gabled entrance porch, moulded surround and decorated lintel inscribed:

TM  
G

cornice; C20 half-glazed door. Former 2-light chamfered mullioned window in gable, mullion now missing, cornice; C20 casements. To left on ground floor is former 3-light mullioned window, mullions now missing, and sill lowered in C20 to form French window; on upper floor are 2 former 2 light double chamfered mullioned windows, mullions missing and sills lowered. To right on ground floor is former 3-light double chamfered mullioned window, mullion missing, and upper floor 3-light flat faced mullioned window, C20 casements and fixed lights. Left-hand gable end, right of centre and right-hand projecting gable end ridge stack. Interior: front left-hand room contains mid-to-late C18 fireplace, moulded imposts, pulvinated frieze and projecting cornice with fleur-de-lis and floral decorations.

SD

X/ 811696

HORTON IN RIBBLESDALE

HELWITH BRIDGE

13/2 (22/50) ✓

9.3.84

Helwith Bridge

GV

.II

Road bridge. 1876. J S Crossley, Engineer. Rock faced gritstone rubble with brick arch heads, continuous stone band at road level, parapets. Six segmental arches, five to the River Ribble and one to the railway line easternmost and now partly blocked. Constructed as part of the Settle to Carlisle line of the Midland Railway.

---

HORTON IN RIBBLESDALE

INGMAN LODGE ROAD

7/1 ✓

-

-

Boundary stone

II

Parish boundary stone. Early C19. Painted slate slab, with angled top, inscribed HORTON INGLETON, separated by a vertical groove. Left-hand side damaged.

---

HORTON IN RIBBLESDALE

INGMAN LODGE ROAD

7/2 (5/38)

Lodge Hall

20.2.59

II\*

Farmhouse. Dated 1687. Limewashed rubble, painted stone dressing, stone slate roof. T shaped plan. 3 storeys, 4 bays, right-hand 2 bays project slightly. Left of centre entrance has moulded surround with flanking halberds; decorated lintel with billet moulding. Datestone above inscribed CW (Christopher Weatherhead). Corbelled round hood and slate hood above. Flanking ground floor and first floor cross windows with hoodmoulds. On second floor above entrance is stepped 3 light chamfered mullioned window with stepped hoodmould. Far left-hand first and second floor version shaped windows with hoodmoulds. Ground floor and first floor of projecting right-hand bays each have 2 light mullioned and transomed window which turns the corner as at The Folly, Settle (qv), the mullion acting as a support; Right-hand 3-light ovolo mullioned and transomed window on ground floor and first floor, all with hoodmoulds. Chamfered single light to second floor. All windows have leaded casement and fixed lights with diamond shaped quarries. Right-hand gable end ridge stack on corbels, left-hand gable end ridge stack was similar, but has since collapsed and been rebuilt flush with gable wall. Prior to this rebuilding there was evidence in the gable and on the ground of an extension further south which may have been associated with an earlier house on the site. Interior includes segmental arched kitchen fireplace with chamfered surround, and decorated arch to parlour fireplace.

---

HORTON IN RIBBLESDALE

MAIN STREET

15/8

New Inn Bridge

GV

II

Road bridge. Late C18. Dressed stone. 2 span segmental arches. Central angular cutwater to south, central and flanking pilasters. String course to base of parapet and wing walls, coping to walls with moulded caps to pilasters. Segmental pointed curve to north cutwater with canted bay above for pedestrians. Stile with steps in north parapet.

---

HORTON IN RIBBLESDALE

MAIN STREET  
(east side)

15/9 ✓

4 South <sup>View</sup>~~Gate~~ (marked  
on OS map as Hoyle  
Cottage)

GV

II

Cottage. Dated 1801 with C17 origins. Limestone rubble brought to course, millstone grit dressings, slate roof. 2 storeys, 2 bays. Left-hand jambs of right of centre entrance abuts former gable end of C17 building; moulded surround, gabled hood and datestone inscribed JG (J Green); c1970 door. 2 ground floor and 2 upper floor 2-light flat faced mullioned windows, C20 casements. Right-hand shaped kneeler, gable end coping and ridge stack. Interior: front left-hand room has arched cupboard of c1800 with fluted Doric pilasters and palmette frieze with swags to cornice. Front right hand room has early C19 fireplace with plain surround and mantle on 2 moulded stone corbels. Crange and range c1800 by " Altham & Son, Penrith.

---



HORTON IN RIBBLESDALE

MAIN STREET  
(east side)

15/10 (20/1A) ✓

Church of St Oswald

20. 2. 58

I

Parish church. C12 nave, rest C15 with C19 and C20 alterations. Rubble brought to course, stone dressings, lead roof. 3 stage west tower; gabled south entrance porch, 5 bay nave and north and south aisles, one bay chancel and north and south chapels. West tower: segmental pointed west entrance with moulded surround and hoodmould, plank door. 3 light Perpendicular window with trefoil heads, central light attached to mullion which pierces arch above, hoodmould. Small trefoil headed window above and 2-light louvred window to bell stage with trefoil heads and hoodmould. Diagonal buttresses, string course at base of embattled parapet. South entrance porch: moulded segmental pointed arch; Romanesque entrance with round head, moulding include zig-zag and roll, some restored c1980, plank door. Three 2-light Perpendicular chamfered mullioned windows to north and south aisles, trefoil heads. Chancel: segmental pointed south entrance with chamfered surround, plank door. Double chamfered 3-light mullioned window with round heads to right. North vestry: circa 1879 eaves stack. East window to north and south chapels: both 2-light double chamfered mullioned with round arched heads. East window to chancel: 3-light chamfered mullioned with trefoil heads, rectilinear tracery above; hoodmould with head stops. Diagonal buttresses, east cruciform finial. Interior: round arches to north and south arcades. North arcade: dentiled cornice and paterae to cap of westernmost pier, probably late c18. Two westernmost piers are round, that to east is octagonal. Corbels in north and south aisles mark formerly lower pitch of aisle roof. Nave: shallow pitched King post roof, restored c1879. Romanesque font: zig-zag moulding to bowl on square base with splayed sides.

---

HORTON IN RIBBLESDALE

MAIN STREET  
(west side)

15/11 ✓

Holme Farmhouse

II

Farmhouse. Mid to later-C18 with C20 alterations. Squared limestone rubble, millstone grit dressings, stone slate roof. Central staircase plan. 2 storeys, double fronted. Central gabled entrance porch, c1970, C20 door. 2 ground floor and 2 upper floor 3-light flat faced mullioned windows, dripstones to ground floor; outer 2 pane fixed lights, central sashes without glazing bars. Gable end and right of centre ridge stacks.

HORTON IN RIBBLESDALE

MAIN STREET  
(west side)

15/12 (20/51) ✓

1.10.76

GV

Bridge End and  
Hannam Cottage

II

Formerly one house, now 2 cottages. late C17 with mid-C19 and C20 alterations. Limewashed rubble, stone slate roof. 2 entries have gabled slate hoods, plank doors. Hannam Cottage has additional right-hand plank door, projecting slate lintel. 3 ground floor windows, 4 upper floor windows, all with sashes with glazing bars. Left-hand bay of Bridge End is mid-C19 addition, windows are large and eaves have square modillions. Left-hand gable end, left of centre c1980, centre, end right of centre ridge stacks. Interior: right-hand room of Bridge end contains 2 chamfered spine beams with run-out stops which continue through party wall to Hannam. Included for group value.

---

HORTON IN RIBBLESDALE

MAIN STREET

15/13 ✓

-

GV

Gray Bridge

II

Road bridge. Probably mid-late C18. Rubble and dressed stone. Single-span segmental arch, raked parapet with raked string course at base.

---

SD.

NY 82416923

13/3 ✓

-

GV

HORTON IN RIBBLESDALE

MOOR HEAD LANE

Boundary stone

II

Parish boundary stone. Early C19. Slate slab, c 1 metre high. Upper surface angled from top left to bottom right. Inscribed HORTON. Adjacent to similar stone in Stainforth parish (qv).

---

## HORTON IN RIBBLESDALE

## NEWHOUSES

12/4 (10/27)

- 20.2.58

Foxwood Cottage  
(formerly listed  
as Mr Sedgewick's  
House, New Houses)

II

Formerly farmhouse, now education centre. c1700 with C19 and C20 alterations. Limewashed rubble, painted stone dressings, stone slate roof. Entrance left of centre has moulded surround, decorated lintel; door has 4 flush panels; cyma moulded dripstone. Ground floor left-hand C19 window, right-hand 2-light flat-faced mullioned window with mid C18 surrounds, mullions now missing, wooden casements. Shaped eaves modillions, right-hand projecting gable end stack. Right-hand return painted sundial with cyma dripstone, gnomon now missing. Upper floor former 2-light mullioned window, mullion now missing. Continuous outshut at rear. Interior not accessible.

## HORTON IN RIBBLESDALE

## SELSIDE

7/3

North Cote Farmhouse

II

Farmhouse. Late C18 with C20 alterations and C17 origins. Rendered squared rubble, millstone grit dressings, slate roof. Central staircase plan. 2 storeys, 3 bays. Garden front: central entrance has plain surround, C20 door. Left-hand ground floor 3-light flat faced mullioned window, 8 pane sashes. Right-hand ground floor window has moulded surround, C20 casements. Windows on upper floor are: 3-light double-chamfered mullioned, 4 pane casements; central C19 single light, 4 pane sashes, and right-hand former 2-light double chamfered with mullion missing, C20 casements. Drip mould to ground floor, dripstones to upper floor. Left-hand weather wall. Gable end ridge stacks. Rear contains two 2-light double chamfered mullioned windows per storey, but only left-hand upper floor retains mullion.

HORTON IN RIBBLESDALE

SELSIDE

7/4

Pen-y-ghent Cottage

GV

II

Formerly farmhouse converted to 2 cottages, now one cottage. Late C17 with C18 and C20 alterations. Rubble plinth, slobbered rubble brought to course, stone dressings, stone slate roof. 2 storeys, 4 bays. Entrance right of centre has slate lintel, c1970 door. 3 ground floor windows: former 4-light chamfered mullions, now only central mullion remaining, slate dripstone; left of centre former 2-light chamfered window, mullion missing; right-hand mid-C18 2-light recessed flat faced mullioned window with C20 sill. 4 upper floor windows: former 3, now 2-light cavetto mullioned window with only one remaining mullion repositioned in centre; single light C20 window reusing mid-C18 jambs; former 2-light chamfered windows, mullion missing, 2-light mid-C18 flat faced mullioned window; c1980 casements. Right-hand gable end stack and left-hand former gable end stack, now at junction with projecting former barn. Rear contains blocked 2-light chamfered mullioned window. Included for group value.

---

HORTON IN RIBBLESDALE

SELSIDE

7/5 (7/45)

Shaw's Farmhouse

GV

II

Farmhouse and cottage. Late C17 with C18, C19 and C20 alterations. Squared limestone rubble, millstone grit dressings, stone slate roof. Formerly central staircase plan. 2 storeys, formerly double fronted with late C19 bay to right. Formerly central entrance in Ionic porch dated 1738, fluted pilasters, entablature and pulvinated frieze with date and badly weathered initials (JP?); pediment. Late C17 plank door with applied mouldings. Flanking ground floor and upper floor 2-light flat faced mullioned windows with moulded architraves and diaphanous pane glazing to casements and fixed lights; c1900 hoodmoulds. Slate dripmould to ground floor above hoodmoulds. Similar window per storey in right-hand bay, but all late C19. Right-hand gable end and 3 other ridge stacks. Left-hand projecting single-storey gabled bay. Interior includes altered late C17 dog-leg staircase, closed string, turned balusters and moulded handrail.

HORTON IN RIBBLESDALE

SELSIDE

7/6 (7/41)

Top Farmhouse

- ✓ 20.2.58

- II

Farmhouse. Late C17 with C18 and C20 alterations. Slobbered, squared rubble, stone dressings, stone slate roof. 3 cell plan, 2 storeys, 3 bays. Right of centre entrance in later gabled porch, chamfered surround, lintel inscribed IH 1726, plank door. To left 3 and 4 light ground floor chamfered mullioned windows and two 4-light windows to upper floor; slate dripstones. To right is large C20 ground floor window reusing C18 surrounds; remains of blocked window to right. Upper floor former 4-light chamfered mullioned window, now 2 lights with only central mullion remaining. Windows have c1980 five pane casements in imitation of former metal casements. 4 ridge stacks, that to right at former right-hand gable, now at junction with outbuilding. Interior: early C18 parlour fireplace with moulded jambs and moulded cornice.

---

HORTON IN RIBBLESDALE

SIKE MOOR

8/1 (8/37) ✓

Gill  
Ling Gill Bridge

- 20.2.58

- II

Bridge on pre-turnpike road. Rebuilt 1765. Rubble, stone dressing. Single span segmental arch, raked string course of dressed stone to parapet, rubble coping. Small wing wall on north west. Panel on north wall inscribed:

ANNO 1765  
THIS BRIDGE  
WAS REPAIR  
ED AT THE  
CHARGE OF  
THE WHOLE W  
EST RIDING

Source: Wakefield Archives Service, R Carr, A J Watson, "Book of West Riding Bridges", 2D1/461.

HORTON IN RIBBLESDALE

STUDFOLD

12/5 ✓

Higher Studfold  
Farmhouse

II

Farmhouse. C18 and C19 with C17 origins and C20 alterations in 3 builds. Lime-washed rubble, millstone grit dressings, stone slate roof. 4 cell plan. 2 storeys, 4 bays. Left-of-centre entrance has plain c1800 surround, plank door with mid-C20 gabled wooden porch. To left are 2 ground floor 3-light flat faced mullioned windows and 2 similar but former 2-light windows on upper floor, mullions now missing. C20 casements and fixed lights. Far-right hand blocked upper floor former 2-light window. Central ridge stack probably at original left-hand gable, left-hand stack at penultimate left-hand gable. Rear, late C17 pantry window in 2-light double chamfered mullioned on square stool; fixed light. Interior: central late C18/early C19 parlour fireplace with corbelled mantle.

---

HORTON IN RIBBLESDALE

STUDFOLD

12/2 ✓

Studford House

II

House. c1810 with later C19 and C20 alterations and C17 origins. Rendered Horton slate, sandstone dressings, stone slate roof. Central staircase plan. 2 storeys, formerly double fronted, now with additional late C19 bay to right. Entrance formerly central, round head to early C20 porch; plain surround to entrance with imposts, keyed round head, 6 panel door. Two 2-light windows per storey, flat faced mullions, and central single light to upper floor; sashes without glazing bars. Upper floor sill band, shaped eaves modillions and chamfered cupins. Late C18 right-hand bay contains plank door, and one single-light window per storey, sashes without glazing bars. Gable end ridge stacks and stack - former right-hand gable. Left-hand return includes chamfered round headed wind. to pantry, 6 pane fixed light. Rear includes staircase window with keyed round head and imposts.

HORTON IN RIBBLESDALE

SWARTH MOOR

13/4

- ✓

Boundary stone c150m  
south west of Helwith  
Bridge

GV

II

Parish boundary stone. Early C19. Slate slab c 45cm high. Upper surface angled from top left to bottom right. Inscribed HORTON. Adjoins similar stone in Stainforth parish, qv.

SD.

NY 777794

7/7

- ✓

---

HORTON IN RIBBLESDALE

THORNS

Footbridge over  
Thorn Gill

II

Footbridge of narrow packhorse type, probably C16 or C17 origins. Limestone rubble and millstone grit with early C20 iron ties. Single span round arch on limestone bedrock.

---

HORTON IN RIBBLESDALE

TOWNHEAD

15/14 ✓

Crooks Farmhouse

GV

II

Farmhouse. Late C18 with C17 origins and C19 alterations. Squared limestone rubble, millstone grit dressings, slate roof. Central staircase plan, 2 storeys, double fronted. Central entrance has plain surround, plank door. 2 windows per storey, all 3 light chamfered mullioned: 2 pane casements and fixed lights. Mid-C19 square eaves modillions. Gable end and right of centre ridge stacks. Left-hand return has C17 former 2-light chamfered mullioned window in upper floor, mullion now missing. Included for group value.

---

HORTON IN RIBBLESDALE

TONWHEAD

15/15 ✓

<sup>u</sup>  
Doxk Ghyll Farmhouse

II

Farmhouse and garden wall, c1800 with C20 alterations. Squared limestone rubble, strap pointed, millstone grit dressings, stone slate roof. Central staircase plan. 2 storeys, 3 bays. Central entrance in c1970 gabled porch, glazed door. 2 ground floor and outer 2 upper floor windows are 3-light with recessed flat faced mullions; similar but 2-light window to centre of upper floor; casements and fixed lights. Shaped modillions and gable end kneelers. Gable end coping and ridge stacks.

---



HORTON IN RIBBLESDALE

TOWNHEAD

15/16 ✓

Ghyll Head Cottages

GV

II

Formerly farmhouse, now 2 cottages. Mid-late-C17 with C19 and C20 alterations. Right-hand cottage: pebbledash, painted stone dressing, slate roof. 2 storeys, 2 bays. Left-hand entrance in early C20 porch, plain surround to entrance, 6 panel door, upper 4 glazed. Right-hand ground floor C20 casement window. Upper floor left-hand basket arched chamfered window and right-hand 3-light chamfered mullioned window; casements and fixed lights. Right-hand gable-end ridge stack. Left-hand cottage, limewashed rubble, slate roof. Upper floor contains former 2-light chamfered mullioned window, mullion now missing and sill lowered. Left-hand gable end projecting ridge stack.

---

HORTON IN RIBBLESDALE

TOWNHEAD

15/1 ✓

Townhead Farmhouse

GV

II

Farmhouse. Late C17 with C19 and C20 alterations. Limewashed rubble and stone dressings, stone slate roof. 2 storeys, 3 bays, with gabled cross-wing to right containing entrance in left-hand side: moulded surround, C20 door, slate hood. Front gable end of bay contains ground floor former 2-light double chamfered window, now single light with slate hoodmould, and upper floor former 3-light now single light chamfered window with central lintel. Gable end stack. To left on ground floor is mid-C19 window, lowered chamfered window and former 5-light chamfered mullioned window, now 3-lights with only king mullion and right-hand mullion remaining, remains of former slate dripmould. On upper floor: mid-C19 window, blocked former 2-light chamfered mullioned window and right-hand former 3-light chamfered mullioned, now single light. C20 casements. Left hand ridge stack at former gable, and right of centre ridge stack.

---

HORTON IN RIBBLESDALE

BRACKENBOTTOM

15/5 (20/25)

20.2.58

Bradford Potholders'  
Club, (formerly listed  
as Mr Dixon's House  
west of Mr Greenbank's  
House)

GV

II

Formerly farmhouse, now house. Late C17, refronted mid to late C18 with late C18 right-hand bay and C20 alterations. Squared limestone watershot rubble, millstone grit dressings, slate roof. Formerly 2 storeys, double fronted, now 3 bays. Formerly central entrance has plain surround, c1970 door. 2 ground floor and 2 upper floor windows: 3 light flat faced mullioned; C20 casements and fixed lights. Ground floor date dripmould. Right-hand bay contains right-hand entrance, plain surround and c1970 door. To left is ground floor window, c1970 and upper floor 3 light flat faced mullioned windows; C20 casements and fixed lights. 3 rows of projecting slate throughs. Left-hand gable end, former right of centre and former right-hand gable ridge stacks. Late c17 window to rear include; 3 light chamfered mullioned and similar right-hand ground floor double chamfered but mullions now missing. On upper floor are 2 former 2-light chamfered mullioned window with square caps, mullions missing. Central C18 staircase window with transom. Front right-hand room contains c1800 kitchen fireplace with corbelled mantle. Upper floor bedroom contains c1800 fireplace with moulded imposts and mantle.

---

HORTON IN RIBBLESDALE

BRACKENBOTTOM

15/6

Green Gates Farmhouse

GV

II

Farmhouse. Dated 1781 with early C18 origins and C20 alterations. Squared limestone rubble, millstone grit dressings, stone slate roof. 2 storeys, 3 bays. Central entrance has plain surround on square bases, lintel inscribed IF EF 1781; nine panel door. 2 ground floor and 3 upper floor windows, plain projecting surrounds, sashes with glazing bars. Shaped kneelers and coping. Shaped eaves modillions. Gable end ridge stacks. Rear entrance has moulded surround and lintel inscribed:

F

17 TA 12

One ground floor and 3 upper floor windows reusing early C18 double chamfered surrounds. Ground floor left-hand 2-light double chamfered mullioned window.