

HORTON IN RIBBLESDALE

MAIN STREET  
(west side)

15/12 (20/51) ✓

1.10.76

Bridge End and  
Hannam Cottage

GV

II

Formerly one house, now 2 cottages. late C17 with mid-C19 and C20 alterations. Limewashed rubble, stone slate roof. 2 entries have gabled slate hoods, plank doors. Hannam Cottage has additional right-hand plank door, projecting slate lintel. 3 ground floor windows, 4 upper floor windows, all with sashes with glazing bars. Left-hand bay of Bridge End is mid-C19 addition, windows are large and eaves have square modillions. Left-hand gable end, left of centre c1980, centre, end right of centre ridge stacks. Interior: right-hand room of Bridge end contains 2 chamfered spine beams with run-out stops which continue through party wall to Hannam. Included for group value.

---

HORTON IN RIBBLESDALE

MAIN STREET

15/13 ✓

-

Gray Bridge

GV

II

Road bridge. Probably mid-late C18. Rubble and dressed stone. Single-span segmental arch, raked parapet with raked string course at base.

---

SD.

~~NY~~ 82416923

HORTON IN RIBBLESDALE

MOOR HEAD LANE

13/3 ✓

-

Boundary stone

GV

II

Parish boundary stone. Early C19. Slate slab, c 1 metre high. Upper surface angled from top left to bottom right. Inscribed HORTON. Adjacent to similar stone in Stainforth parish (qv).

---

## HORTON IN RIBBLESDALE

## NEWHOUSES

12/4 (10/27)

Foxwood Cottage  
(formerly listed  
as Mr Sedgewick's  
House, New Houses)

II

Formerly farmhouse, now education centre. c1700 with C19 and C20 alterations. Limewashed rubble, painted stone dressings, stone slate roof. Entrance left of centre has moulded surround, decorated lintel; door has 4 flush panels; cyma moulded dripstone. Ground floor left-hand C19 window, right-hand 2-light flat-faced mullioned window with mid C18 surrounds, mullions now missing, wooden casements. Shaped eaves modillions, right-hand projecting gable end stack. Right-hand return painted sundial with cyma dripstone, gnomon now missing. Upper floor former 2-light mullioned window, mullion now missing. Continuous outshut at rear. Interior not accessible.

## HORTON IN RIBBLESDALE

## SELSDALE

7/3

North Cote Farmhouse

II

Farmhouse. Late C18 with C20 alterations and C17 origins. Rendered squared rubble, millstone grit dressings, slate roof. Central staircase plan. 2 storeys, 3 bays. Garden front: central entrance has plain surround, C20 door. Left-hand ground floor 3-light flat faced mullioned window, 3 pane sashes. Right-hand ground floor window has moulded surround, C20 casements. Windows on upper floor are: 3-light double-chamfered mullioned, 4 pane casements; central C19 single light, 4 pane sashes, and right-hand former 2-light double chamfered with mullion missing, C20 casements. Drip mould to ground floor, dripstones to upper floor. Left-hand weather wall. Gable end ridge stacks. Rear contains two 2-light double chamfered mullioned windows per storey, but only left-hand upper floor retains mullion.

HORTON IN RIBBLESDALE

SELSIDE

7/4

- ✓

Pen-y-ghent Cottage

GV

II

Formerly farmhouse converted to 2 cottages, now one cottage. Late C17 with C18 and C20 alterations. Rubble plinth, slobbered rubble brought to course, stone dressings, stone slate roof. 2 storeys, 4 bays. Entrance right of centre has slate lintel, c1970 door. 3 ground floor windows: former 4-light chamfered mullions, now only central mullion remaining, slate dripstone; left of centre former 2-light chamfered window, mullion missing; right-hand mid-C18 2-light recessed flat faced mullioned window with C20 sill. 4 upper floor windows: former 3, now 2-light cavetto mullioned window with only one remaining mullion repositioned in centre; single light C20 window reusing mid-C18 jambs; former 2-light chamfered windows, mullion missing, 2-light mid-C18 flat faced mullioned window; c1980 casements. Right-hand gable end stack and left-hand former gable end stack, now at junction with projecting former barn. Rear contains blocked 2-light chamfered mullioned window. Included for group value.

---

HORTON IN RIBBLESDALE

SELSIDE

7/5 (7/45)

-

Shaw's Farmhouse

GV

II

Farmhouse and cottage. Late C17 with C18, C19 and C20 alterations. Squared limestone rubble, ballstone grit dressings, stone slate roof. Formerly central staircase plan. 2 storeys, formerly double fronted with late C19 bay to right. Formerly central entrance in Ionic porch dated 1738, fluted pilasters, entablature and pulvinated frieze with date and badly weathered initials (JP?); pediment. Late C17 plank door with applied mouldings. Flanking ground floor and upper floor 3-light flat faced mullioned windows with moulded architraves and diamond pane glazing to casements and fixed lights; c1900 hoodmoulds. Slate dripmould to ground floor above hoodmoulds. Similar window per storey in right-hand bay, but all late C19. Right-hand gable end and 3 other ridge stacks. Left-hand projecting single-storey gabled bay. Interior includes altered late C17 dog-leg staircase, closed string, turned balusters and moulded handrail.

HORTON IN RIBBLESDALE

SELSIDE

7/6 (7/41)

Top Farmhouse

II

Farmhouse. Late C17 with C18 and C20 alterations. Slobbered, squared rubble, stone dressings, stone slate roof. 3 cell plan, 2 storeys, 3 bays. Right of centre entrance in later gabled porch, chamfered surround, lintel inscribed IH 1726, plank door. To left 3 and 4 light ground floor chamfered mullioned windows and two 4-light windows to upper floor; slate dripstones. To right is large C20 ground floor window reusing C18 surrounds; remains of blocked window to right. Upper floor former 4-light chamfered mullioned window, now 2 lights with only central mullion remaining. Windows have c1980 five pane casements in imitation of former metal casements. 4 ridge stacks, that to right at former right-hand gable, now at junction with outbuilding. Interior: early C18 parlour fireplace with moulded jambs and moulded cornice.

HORTON IN RIBBLESDALE

SIKE MOOR

8/1 (8/37)

Gill  
Ling Ghyll Bridge

II

Bridge on pre-turnpike road. Rebuilt 1765. Rubble, stone dressing. Single span segmental arch, raked string course of dressed stone to parapet, rubble coping. Small wing wall on north west. Panel on north wall inscribed:

ANNO 1765  
THIS BRIDGE  
WAS REPAIR  
ED AT THE  
CHARGE OF  
THE WHOLE W  
EST RIDING

Source: Wakefield Archives Service, R Carr, A J Watson, "Book of West Riding Bridges", 2D1/461.

HORTON IN RIBBLESDALE

STUDFOLD

12/5 ✓

Higher Studfold  
Farmhouse

-

-

II

Farmhouse. C18 and C19 with C17 origins and C20 alterations in 3 builds. Lime-washed rubble, millstone grit dressings, stone slate roof. 4 cill plan. 2 storeys, 4 bays. Left-of-centre entrance has plain c1800 surround, plank door with mid-C20 gabled wooden porch. To left are 2 ground floor 3-light flat faced mullioned windows and 2 similar but former 2-light windows on upper floor, mullions now missing. C20 casements and fixed lights. Far-right hand blocked upper floor former 2-light window. Central ridge stack probably at original left-hand gable, left-hand stack at penultimate left-hand gable. Rear, late C17 pantry window in 2-light double chamfered mullioned on square stool; fixed light. Interior: central late C18/early C19 parlour fireplace with corbelled mantle.

---

HORTON IN RIBBLESDALE

STUDFOLD

12/2 ✓

Studford House

-

-

II

House. c1810 with later C19 and C20 alterations and C17 origins. Rendered Horton slate, sandstone dressings, stone slate roof. Central staircase plan. 2 storeys, formerly double fronted, now with additional late C19 bay to right. Entrance formerly central, round head to early C20 porch; plain surround to entrance with imposts, keyed round head, 6 panel door. Two 2-light windows per storey, flat faced mullions, and central single light to upper floor; sashes without glazing bars. Upper floor sill band, shaped eaves modillions and chamfered quoins. Late C19 right-hand bay contains plank door, and one single-light window per storey, sashes without glazing bars. Gable end ridge stacks and stack at former right-hand gable. Left-hand return includes chamfered round headed window to pantry, 6 pane fixed light. Rear includes staircase window with keyed round head and imposts.

HORTON IN RIBBLESDALE

SWARTH MOOR

13/4

-

GV

Boundary stone c150m  
south west of Helwith  
Bridge

II

Parish boundary stone. Early C19. Slate slab c 45cm high. Upper surface angled from top left to bottom right. Inscribed HORTON. Adjoins similar stone in Stainforth parish, qv.

---

SD.

NY 777794

7/7

-

-

HORTON IN RIBBLESDALE

THORNS

Footbridge over  
Thorn Gill

II

Footbridgew of narrow packhorse type, probably C16 or C17 origins. Limestone rubble and millstone grit with early C20 iron ties. Single span round arch on limestone bedrock.

---

HORTON IN RIBBLESDALE

TOWNHEAD

15/14 ✓  
-  
-

Crooks Farmhouse

GV

II

Farmhouse. Late C18 with C17 origins and C19 alterations. Squared limestone rubble, millstone grit dressings, slate roof. Central staircase plan, 2 storeys, double fronted. Central entrance has plain surround, plank door. 2 windows per storey, all 3 light chamfered mullioned: 2 pane casements and fixed lights. Mid-C19 square eaves modillions. Gable end and right of centre ridge stacks. Left-hand return has C17 former 2-light chamfered mullioned window in upper floor, mullion now missing. Included for group value.

---

HORTON IN RIBBLESDALE

TONWHEAD

15/15 ✓  
-  
-

<sup>U</sup>  
Dork Ghyll Farmhouse

II

Farmhouse and garden wall, c1800 with C20 alterations. Squared limestone rubble, strap pointed, millstone grit dressings, stone slate roof. Central staircase plan. 2 storeys, 3 bays. Central entrance in c1970 gabled porch, glazed door. 2 ground floor and outer 2 upper floor windows are 3-light with recessed flat faced mullions; similar but 2-light window to centre of upper floor; casements and fixed lights. Shaped modillions and gable end kneelers. Gable end coping and ridge stacks.

---



HORTON IN RIBBLESDALE

TOWNHEAD

15/16 ✓

Ghyll Head Cottages

GV

II

Formerly farmhouse, now 2 cottages. Mid-late-C17 with C19 and C20 alterations. Right-hand cottage: pebbledash, painted stone dressing, slate roof. 2 storeys, 2 bays. Left-hand entrance in early C20 porch, plain surround to entrance, 6 panel door, upper 4 glazed. Right-hand ground floor C20 casement window. Upper floor left-hand basket arched chamfered window and right-hand 3-light chamfered mullioned window; casements and fixed lights. Right-hand gable-end ridge stack. Left-hand cottage, limewashed rubble, slate roof. Upper floor contains former 2-light chamfered mullioned window, mullion now missing and sill lowered. Left-hand gable end projecting ridge stack.

---

HORTON IN RIBBLESDALE

TOWNHEAD

15/1 ✓

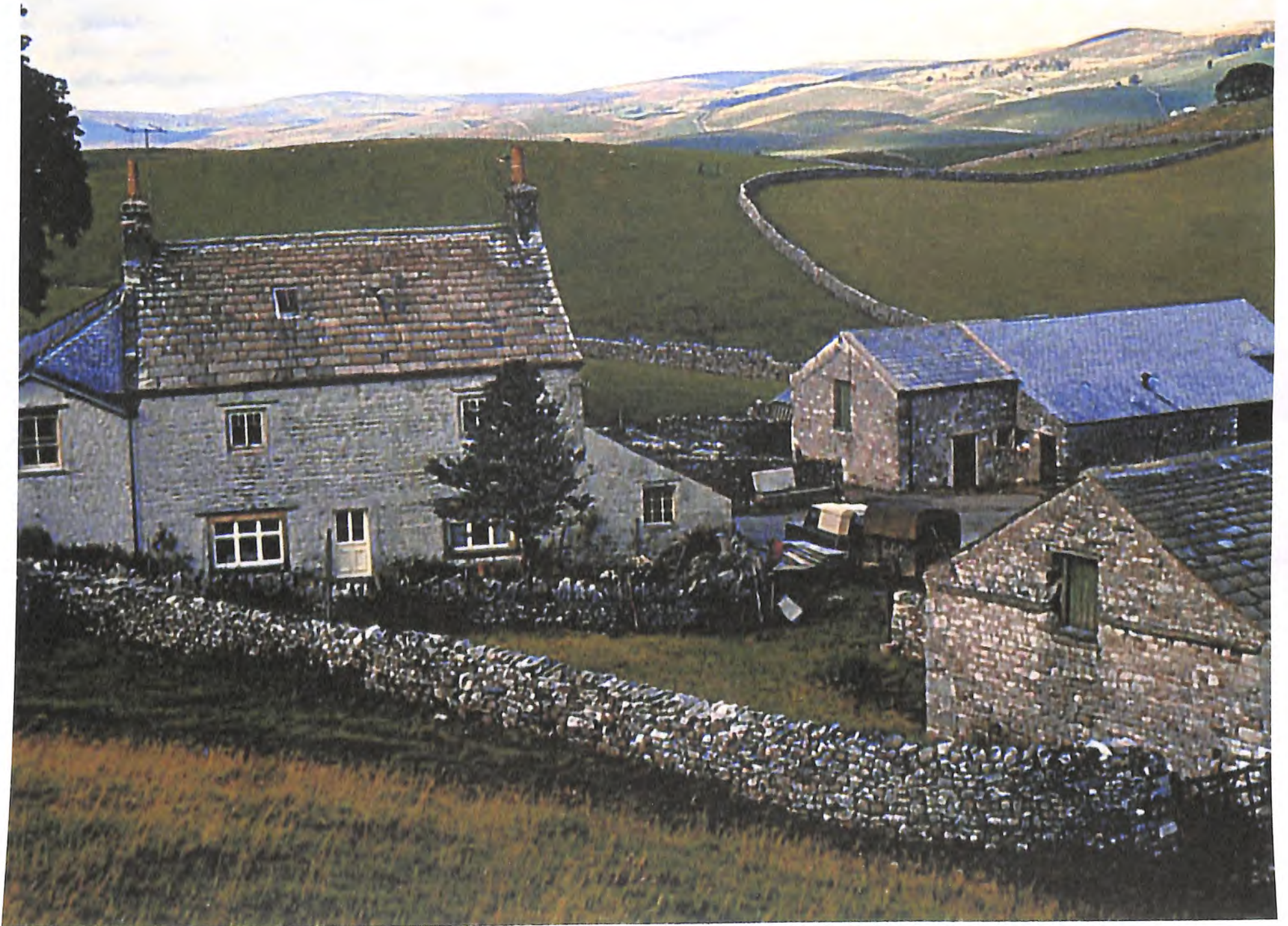
Townhead Farmhouse

GV

II

Farmhouse. Late C17 with C19 and C20 alterations. Limewashed rubble and stone dressings, stone slate roof. 2 storeys, 3 bays, with gabled cross-wing to right containing entrance in left-hand side: moulded surround, C20 door, slate hood. Front gable end of bay contains ground floor former 2-light double chamfered window, now single light with slate hoodmould, and upper floor former 3-light now single light chamfered window with central lintel. Gable end stack. To left on ground floor is mid-C19 window, lowered chamfered window and former 5-light chamfered mullioned window, now 3-lights with only king mullion and right-hand mullion remaining, remains of former slate drip mould. On upper floor: mid-C19 window, blocked former 2-light chamfered mullioned window and right-hand former 3-light chamfered mullioned, now single light. C20 casements. Left hand ridge stack at former gable, and right of centre ridge stack.









Southern end of Horton Parish, showing Penyghent.