

Bradford Potholers House SD 817722

A two-storey 18th century house facing east, with four three-light flat mullioned windows and a central doorway framed with large quoins and a heavy lintel; there is a slate string course, and the upper storey is taller than the lower storey. A single bay outbuilding with external stone stairs has been built onto the north end. At the back there is a central staircase window framed in flat stone blocks with one transom; three small splayed windows with the mullions removed, and one three-light window also splayed in which the mullions remain; a plain back door. The house is two rooms deep and there is a thick central spine wall so that the two ranges were at one time separately roofed - as evidence of this, a tiebeam and principals can be seen in the front south bedroom. The beef kist has been removed. The front north bedroom has a good moulded stone fireplace, blocked. The staircase is modern. Downstairs in the houseplace (south west room) is a very large modernised fireplace with stone jawbs corbelled out at the top dating from c. 1800.

jamb



Larger photograph in file.

Bridge End Cottage SD 808727 and Hannam Cottage

Two double fronted cottages converted from a three-cell house, perhaps built in the early 19th century and the eaves later raised, and a late 19th century single-cell cottage added at the southern end. They are built of rubble with plain sunken sash windows and plain doors with simple gabled porches. Slate roofs. Group value with the bridge.



Larger photograph in file.

Butts.

024



BUTTS

Capsticks SD 813703 and Barn.

Windows: all framed in flat milled sandstone blocks. No glazing bars. There is a large barn south of the house built of local Horton slabs with gritstone dressings, very handsome and completing the group.

Higher Studfold

A plain farmhouse with rendered walls, later than Capsticks, group value only, as are the other houses in this location.



Larger photograph in file.

Capsticks. Old Tithe Barn.



Crooks Farm SD 810721

Two storeys and two rooms deep of coursed rubble with flush quoins, a stone roof and three chimneys. The four three-light windows has very narrow splayed frames and narrow mullions, and the door is framed in flat stone blocks. Heavy square stone gutter brackets. The date may be mid 18th century or mid 19th century but in any case it is deliberately archaic in style.



Larger photograph in file.

Crooks Farm Barn.

628

Barn with date 1843

This is a bauk barn with rear entrance at upper level, in front a cart entrance with cow byre to the north of it retaining wooden skell booses; the barn is probably early 18th century but was given a round dressed stone arch and a date plaque in the 19th century. Considerable group value. Buildings attached in a poor way and roofless but ought not to be lost as they maintain the row of building. Yet another bauk barn immediately next to Crooks Farm.



Crown Hotel SD 808727

An imposing 19th century Inn, presumably of the same date as the bridge leading to Rowe End. It has stuccoed walls and stone-framed windows to three storeys symmetrically arranged round a doorway in a porch. To the east the house has been extended by a further bay not quite so regularly designed, and low outbuildings. To the west, a two storey rubble-built cottage with a central chimney completes the group.

Part of the visual impact of this building is lost because it can only be seen close-to; it is unusually tall and imposing for a village inn. Architecturally unremarkable, it has some historic interest (like the Golden Lion near the church) as a reminder of the days when the Settle-Ribblehead road was an important through route.



Douk Ghyll SD 813724

all framed in flat sandstone blocks just proud of the surface. Flush quions, three chimneys all in excellent condition. One of the outbuildings has a three-light and a two-light splayed mullion window flanking a plain door on its river side; above is a slate course marking earlier low eaves, but broken into by a later window; this is the shell of a former farmhouse, probably early 17th century, and deserves protection. It could with advantage be made into a dwelling again if the opportunity should arise.



Larger photograph in file.

Fawber SD 808744

3 larger photos in file.

This house which lies high on the hillside facing southeast, was built soon after 1700 as a successor to an earlier house that has now been turned into a barn. It is two storeys, two rooms wide and two rooms deep. The front has three 3-light splayed mullion windows and the fourth rather larger 3-light window has flat mullions and a square block frame. The front door is hidden by a plain porch. The rear of the house has lower eaves and contains two smaller rooms with the staircase between them. The east end chimney has an external stack. The house is in reasonable condition though only used intermittently (as a study centre?). It is a good example of its kind.



NORTH YORKSHIRE (W.R.)

HORTON IN RIBBLESDALE, FAWBER 'A' . SD 807745 visited 8-7-79

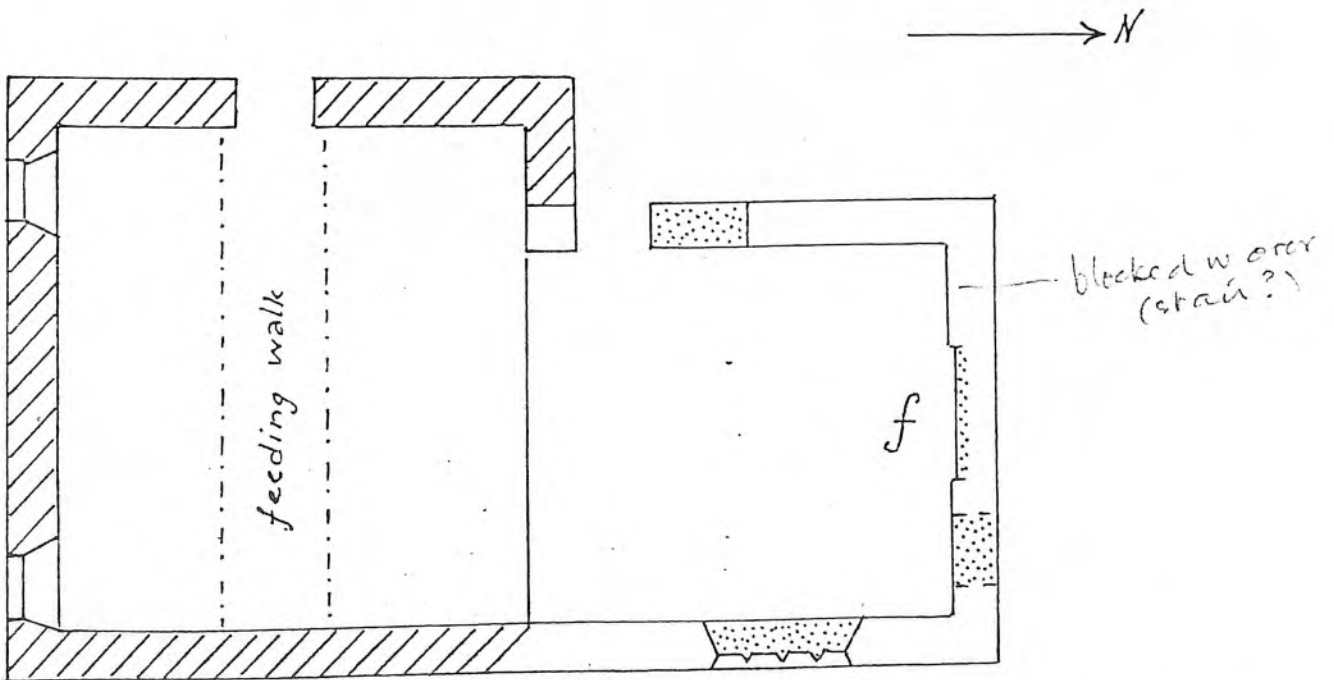
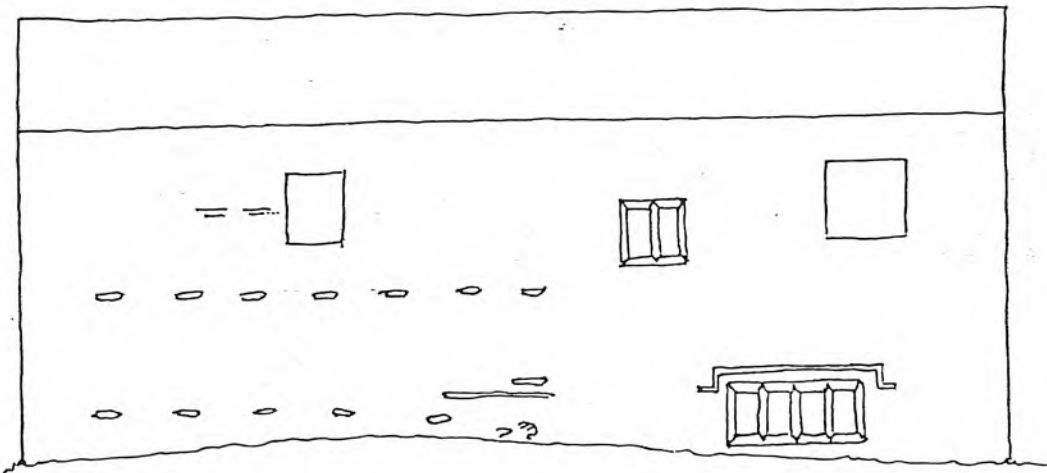
The laithe at Fawber has been converted from an earlier house. The site is remote, at over 1,000 feet up and half a mile from a road. It is built of roughly-coursed rubble, chiefly limestone with sandstone dressings. The house faced east, with the entrance in the north gable beside the fireplace. The outer face of the north wall shows only the faintest indication of the former doorway, but inside are clear straight-joints and a monolithic lintel. The fireplace (no signs of a chimney) has a chamfered monolithic lintel and quoined jambs. Above it to the west is a blocked window of which no signs remain outside. On the east wall is a four-light recessed-splayed window with a moulded drip course over it and inside a relieving arch of pitched rubble. The upper blocked window has two lights, all the mullions of these windows splayed and recessed. The two plain openings in the upper part of the east wall date from the conversion to a farm building, though one may be made out of a former mullioned window - the lintel of a two-light window is incorporated in a door-blocking in the west wall. The rebuilt south end of the building has projecting throughs, two windows in the south gable and a door to the west. The cart doorway in the west wall has been partly blocked; north of it, a later lean-to shed conceals the outer face of the wall.

The laithe was designed to house two rows of cattle at the south end with hay above them, and a full-height hay-barn at the north end.

The house-plan is now incomplete. It probably extended for two ground-floor rooms, with three rooms over them, perhaps four if the north window means that that end was divided lengthwise. At first sight it seems that the surviving window was that of the houseplace, making a gable-entry plan. However, to have the main entrance in the north wall in such an exposed site is hardly practical, and perhaps we should consider the window to be that of a parlour, with the smaller though still good quality fireplace appropriate to that room and an independent entrance, while the house and main entrance have been lost at the south end of the building. An entrance in the south gable, via a lobby at the south end of the east front, or even in the middle of the east front, are all possible; a larger fireplace in the south gable would then be likely. There is not enough evidence to decide the plan form, and therefore the date.

B. Hutton.

fireplace arch
(not to scale)



0 1 2 3 4 5 metres

FILE

NORTH YORKSHIRE
AND CLEVELAND
VERNACULAR BUILDINGS
STUDY GROUP 550

NORTH YORKSHIRE (W.R.)

HORTON IN RIBBLESDALE, FAWBER 'B'. SD 807745. visited 8-7-79.

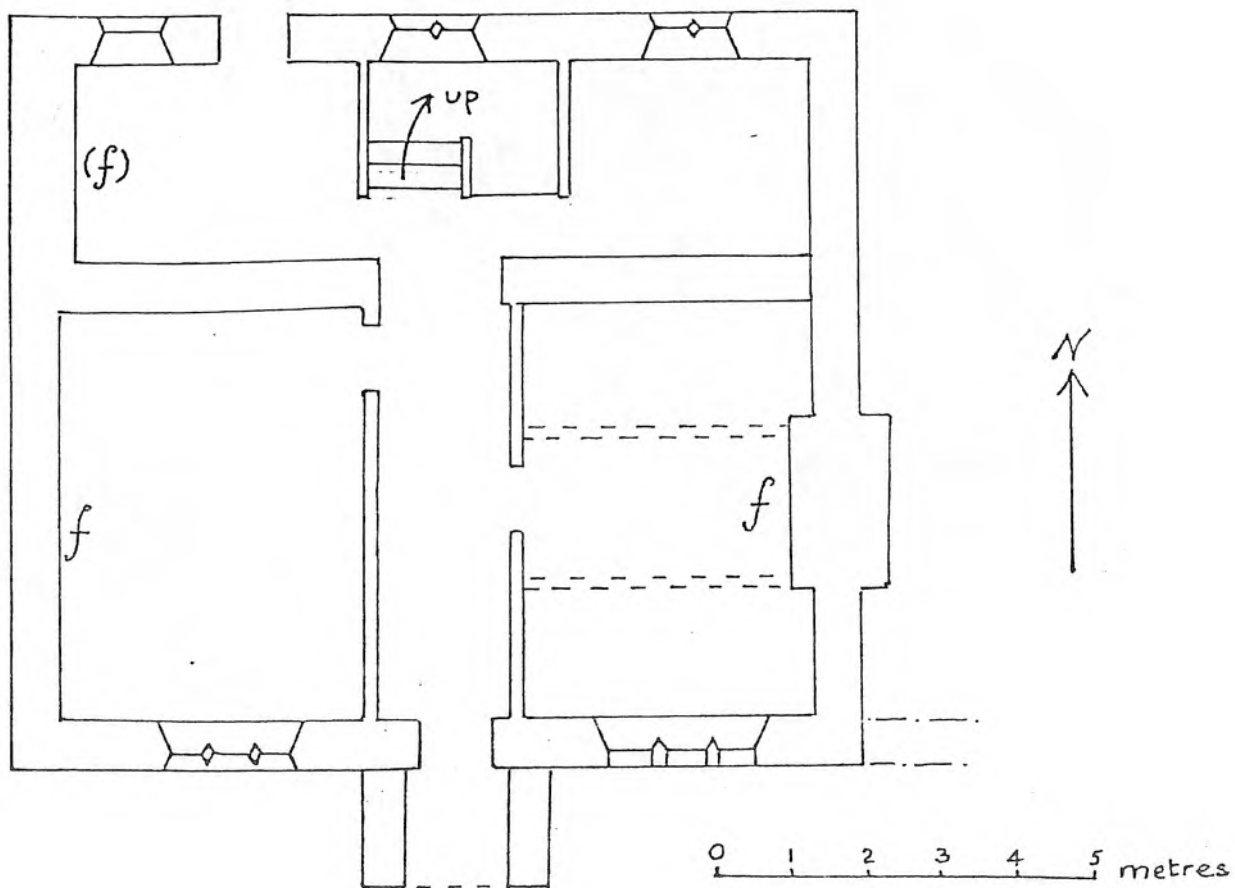
The present farmhouse at Fawber appears to be in use as some sort of study centre. It stands on a remote site, above 1,000 feet, to the east of the farm buildings facing south. Still farther west is the laithe which was formed out of the earlier house (Fawber 'A'). The track by which it is reached from the Newhouses-Birkwith road is now no more than a footpath.

It is built of rubble rendered over most of its surface, on an irregular plinth with a slate roof. All the windows except one are recessed, splayed mullion windows, the exception being the 3-light window with flat-fronted, rear-splayed mullions in the main living-room. The house is in good repair but the interior could not be measured; the inside of the plan, therefore, is sketched only.

The back part of the house is a two-storey outshot with the stairs in the middle. There was originally a transomed 4-light stair-window, the two lower lights now blocked. West of the stairs is a back kitchen with a fairly large round fireplace-arch in the west wall filled in and heavily painted over, with stone shelving built in front of it. The room to the east of the stairs is a dairy with more stone shelves.

The house has the typical plan of the district, a stone wall dividing the front of the house from the back but the other walls only light partitions. It is later than house 'A', but not long after the end of the 17th century, perhaps about 1720-30. The housestead window is later than this - after 1750.

B. Hutton.







636

Fawber Barn.



Foredale SD 804700

Left of the porch are a formerly three-light window with a flat stone frame and a modern glazed door; in the upper storey two tall formerly two-light windows with rebated splayed frames, mullions removed. To the right of the porch is an upper three-light window with flat stoned frame and mullions and a three-light rebated splayed window below, the mullions removed, and a dripstone over it.

There is also a fine chimney with a stepped stack at the north end, and two other chimneys. At the back are several small windows with splayed frames.

The barn, opposite the north end of the house, is built of (local stone, (Horton slabs?)) and has a reused cruck as a lintel; inside, the roof timbers include strongly curved members that may also be reused crucks. List says 'in the barn is a panel bearing the date 1657'.



Larger photograph in file.





G 344

Foredale (2).



Date-stone at front of house.



Front of House.

Larger photographs of both in file.



G34

Foredale Cottages (2).



A range in one of the cottages.

Similiar size photograph in file.

326

Ghyll Head cottages SD 811722

Two cottages formerly a 17th century farmhouse, facing east towards the river. The north cottage is covered in dark grey pebble-dash but has a blocked two light splayed mullion window in the gable end; a single arched light and a three-light upper window, also splayed, in front but below them a plain doorway and a large square steel-framed single pane window. The south cottage had a splayed two-light upper window, now with the mullion removed and the sill dropped, and a large single pane lower window under a concrete lintel where there was formerly a stone-framed sash window, this replaced a four-light window described in the List: plain door. Corbelled-out plain chimneys at each end.

In front, Ghyll Cottage, no architectural value but of group value.



Larger photograph in file.

837



Ghyll Cottages, Horton.

Mrs Cook in porch of detached cottage

Greengates SD 817722

The symmetrically designed front facing southeast or south has four tall sash windows and a door framed in flat milled sandstone blocks, the lintel inscribed F E F 1781 in characters of a 19th century type. Nine panelled door. Moulded stone gutter brackets, and plain gable-copings with kneelers. At the back there are splayed frames to what seem to have been cross windows, and a fine doorway with a deep, cyma-moulded lintel and jawbs, with the inscription 17^F_{TA} 12. Against the west end is an outbuilding with a west facing window re-using a large stone-lintel with a Tudor arch under a squared head.



Larger photograph in file.

Doorway of cottare.



Ghyll Cottare (2).

024

320

Harber SD 807729

This small farmhouse stands alone to the east of the Newhouses road with a laithe attached at the eastern end. It faces south. It is rubble built with stone-framed windows and a quoined door, but formerly had lower splayed-mullion windows of which some traces remain and a deep door lintel replaced by a shallower one. It was built soon after 1700 as a two-cell house with the door opening into a lobby in front of the chimney stack, a 17th century plan of which this is the only example in this parish. A non-domestic end east of the front door has been made into a kitchen with a recent shallow-bay window glazed with bulls-eye glass. There is a rear dairy wing with no upper floor though it is two storeys high. A cupboard inside a blocked fire-window is dated 1747. This house is of considerable historical interest as an example of a building design now uncommon; recent alterations to the windows etc. do not seriously detract from this



Larher photograph in file.



NORTH YORKSHIRE (W.R.)

HORTON IN RIBBLESDALE, Harber Farmhouse, SD 807729. Mr and Mrs Wilcock.
visited 28-10-78.

The house is isolated, standing under Harber Scar near the lane running north from Horton to the hamlets of Newhouses and Birkwith. It faces south and is built of sandstone and limestone rubble with a stone roof. There are about 150 acres of pasture belonging to the farm, though most is at present let off.

The windows are framed in squared stone blocks and until recently had hung sashes with two panes to each sash. The window of the kitchen has been made up to match the others from re-used stone slabs. At the back of the living room is a small single light that was blocked up in 1747 and made into a cupboard; the cupboard was taken out recently and the window slightly enlarged by lowering its sill. The inscription on the door is drawn actual size.

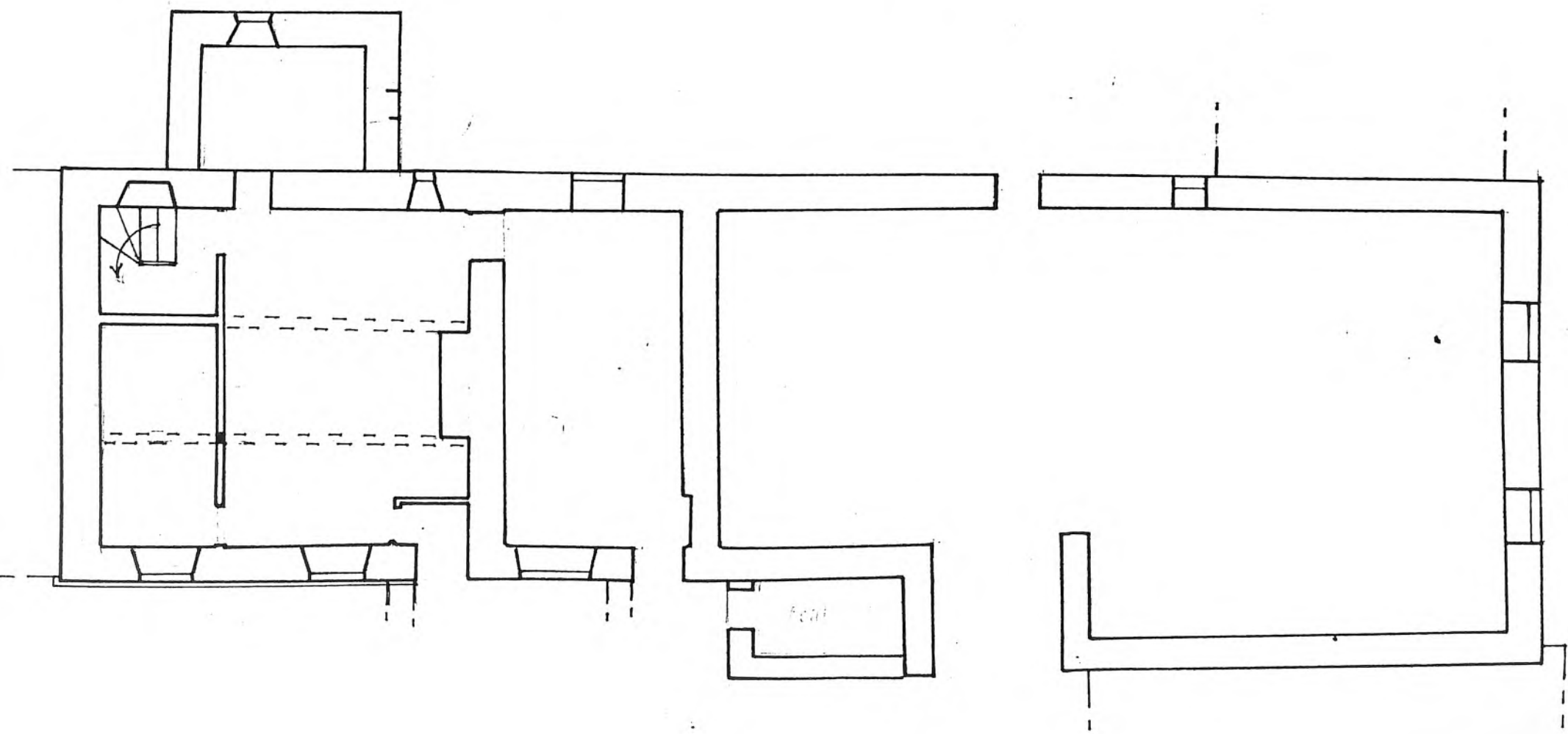
The house has a two-cell plan with end lobby entry in front of a chimney at the east end, and beyond this a kitchen has been made out of what was formerly farm building with stone steps up to the loft above. East of this is a large laithe which at the time of our visit was filled with baled hay. Its roof has plain principal trusses without collars, two pairs overlapping trenched purlins and a ridge-piece. In front of the laithe are modern farm buildings. At the back of the house is what seems to have been a semi-sunken dairy which, although two storeys high, was open to the roof until recently ceiled for conversion to a laundry. This may be significant in view of open, unplastered rooms in two other farmhouses recorded in the same parish.

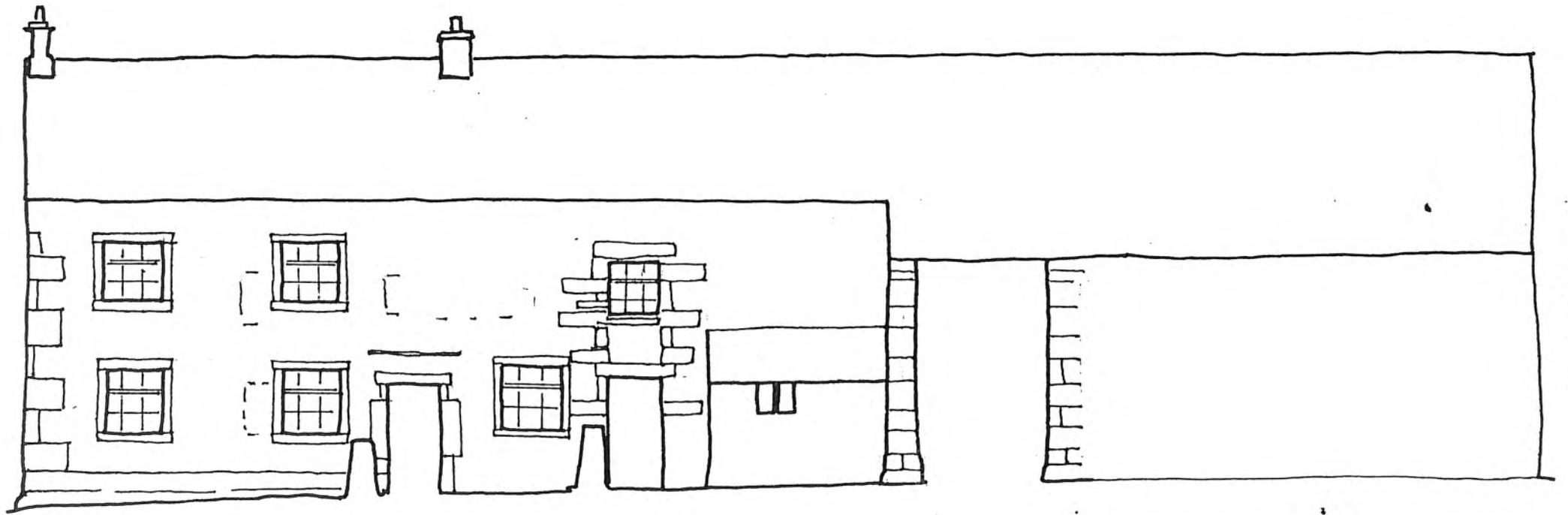
The house was probably built in the early 18th century with slightly lower eaves and windows of horizontal shape, as can just be detected from irregularities in the front walling drawn on the elevation. The present windows date from the mid 19th century when the eaves were raised to their present level. New windows have just been inserted (1978).

K and B Hutton.



0 1 2 3 4 5 metres





A B

J 7 4 7

High Birkwith SD 800768

Larger photo in file.

The house sits low to the ground facing west with a large group of outbuildings surrounding it. It is rendered and has stone block-framed windows with splayed external reveals within the frame, and a door with a splayed stone frame; the shape of the openings is vertical and they contain lugged sash windows. To the south the house is linked to a row of buildings at the end of which is a barn lying east-west with a doorway (photographed) which has rusticated voussoirs inscribed D E P 1703 on the keyblock and M on the left voussoir. The great barn lying parallel to the outbuildings to the west has recently fallen in a gale, and is being rebuilt on a more modest scale - its roof timbers were 19th century. To the northwest of the house is a detached stable with hayloft over, which has a small round-headed window and a doorway using the lintel of a splayed mullion window turned on its side.

An attractive house, probably much earlier than it looks, and an interesting group and setting. At one time an Inn on the drove road to Langstrothdale.

Low Birkwith SD 797765

The house lies away from the road downhill and is described as 17th century but completely altered externally.





2112

Holme Farm SD 809722

Two storey house with four three-light windows framed in squared blocks set in regularly coursed well-squared masonry with flush quoins. The similarly framed door is covered by a modern porch. There are three chimneys. Good 18th century work. Adjoining buildings end-on to road in derelict condition, probably older than the house.



Larger photograph in file.

0-12
Keepers Cottage,
Brackenbottom SD 817722

A two storey two room deep house facing south at the north end of the hamlet with four four-light windows on the front framed in narrow flat-moulded architraves, and a two light window to match over the door. The lower windows have dripstones. The front doorway is built of 19th century milled blocks. The barn opposite has been demolished, but there is another large barn near the west end of the house with big gritstone quoins, a tall cart door facing west and a three-door cowhouse at the south end towards the road.



Larger photograph in file.

011

Lime Kiln, Dry Laithe, Meadow Old Ing.





There are a surprising number of dates inscribed on houses in Horton, or on stones that come from former houses. They are:

- 1625 Colt Park 'TG'
- 1657 said to be in a barn at Foredale
- 1658 Blindbeck 'SW'
- 1663 Colt Park 'TH'
- 1679 Studfold 'IP' for John Proctor
- 1687 Ingmanlodge, Lodge Hall, 'CW' for Christopher Wetherherd
- 1697 Blindbeck 'TH' for Thomas Howson
- 1703 High Birkwith 'DEP' - M'
- 1712 Greengates 'F TA'
- 1723 Rawe Farm 'IL' for James Lund → 1730 Cragg Hill
- 1735 Town End 'A IA'
- 1731 or ~~1737~~, Foredale 'TM G'
- 1738 Shaws 'JJ'
- 1747 Harber 'AB'
- 1781 Greengates 'FEF'
- 1801 South View 'IG'

- If anyone knows of any other dates inscribed on houses or barns, either on the stonework or inside on woodwork, plasterwork or glass, please would they let us know? Any dates are, naturally, of the greatest interest to us in our study of the history of Horton.

The datestone IF . EF 1785 must refer to John FOSTER and his wife Easter who married at Clapham in 1756.

This datestone seems to bear the initials of Thomas and Ann FOSTER married at Clapham in 1707.

Foredale T_GM T and M Green

Lodge Hall C W Christopher Wetherherd

High Birkwith D E P 1703 M should be Marmaduke Procter

Selside Top Farm I I H 1726 James Harris?

Town End Farm I_AA 1735 ? Armitstead

Rowe Farm I L 1723 John Lund

Greengates at Brackenbottom F E F 1781

F T A 1712 Thomas Foster

HORTON IN RIBBLESDALE

11/1 (20/48)

Beecroft Hall

-

II

Formerly farmhouse, now unoccupied. Late C17/early C18 with C19 alterations. Limewashed squared rubble, painted stone dressings, stone slate roof. Central staircase plan. 2 storeys, 2 bays with additional mid-C19 gabled left-hand bay. Formerly central entrance has plain surround, 4 panel door, upper 2 glazed. 2 large ground floor windows now boarded, but reputedly 3-light mullioned and transomed. Two upper floor windows formerly 2-light chamfered mullioned, now single light with mullions missing, C20 casements. Mid-C19 upper floor window to left-hand bay has sashes with glazing bars. Gable end ridge stacks. Right-hand return contains 3 rows of throughs and a round window. Ring includes 3 rows of throughs, ground floor and upper floor former 2-light chamfered mullioned windows now single lights with mullions missing, and 2-light chamfered mullioned stair window between floors; all 3 have slate hoods and 2-pane casements. Interior reputedly contains a moulded doorhead and an early C18 dog-leg staircase with closed string, turned balusters and moulded handrail.

HORTON IN RIBBLESDALE

12/1

Fawber Farmhouse

-

II

Farmhouse. Early C18 with C19 and C20 alterations. Rendered, stone dressings, stone slate roof. Central staircase plan. 2 storeys, 3 bays. Central entrance in gabled porch, c1970 plank door. All windows are boarded, but in 1979 were recorded as follows: ground floor right-hand mid-C18 3 light flat faced mullioned; left-hand ground floor and 2 upper floor 3 light double chamfered mullioned. Gable-end ridge stacks, that to right projects. Continuous outshut at rear contains mullioned and transomed 2-light stair window, now blocked.

HORTON IN RIBBLESDALE

15/2 (20/15) ✓

Rowe Farmhouse

II

Farmhouse: Dated 1723 with C19 and C20 alterations. Watershot limestone masonry, millstone grit dressing, stone slate roof. 2 cell plan. 2 storeys, double fronted. Central entrance has roll moulded surround, decorated lintel inscribed IL 1723, dripstone; C20 door. 2 chamfered windows with ovolo mullions per storey: 4 lights to ground floor, formerly 3 lights to upper floor, now 2 lights each with only one repositioned mullion; casement and fixed lights. Gable end and right of centre ridge stacks. At rear is C19 outshut to house staircase. Interior: Left-hand room contains C18 fireplace with corbelled mantle. 2 massive spine beams.

HORTON IN RIBBLESDALE

12/3 and 15/3 (20/16)

Blindbeck Farmhouse
and Cottage

II

Farmhouse and cottage. Late C17 with C18 and C20 alterations. Slobbered coursed rubble, stone dressings, stone slate roof. Lobby entry plan. 2 storeys, 4 bays. Left of centre gabled porch in early C18, chamfered surround, Tudor arched head; small chamfered window in gable. To left: ground floor 2-light double chamfered mullioned window, and 3 light double chamfered mullioned window with hoodmould; upper floor, 3 light chamfered mullioned window. To right: ground floor 3 light double chamfered mullioned window, now with flat faced mullions, and remains of further blocked light; upper floor 3 light double chamfered mullioned window. Right-hand bay is now the cottage: c1970 entrance porch with lean-to roof abutting former 3-light chamfered mullioned window, now 2 lights with only one mullion remaining. Casements and fixed lights. Upper floor 3 light double chamfer mullioned window. Right-hand gable end, left-hand, and massive left of centre ridge stacks. At rear is C18 wing. Interior: front left-hand room contains late-C17 fireplace, chamfered surround with 2-piece Tudor arched mantle. Front right-hand room contains early C18 fireplace with cupboard inscribed SW 1659. Upper floor re-set oak cupboard inscribed TH (Thomas Howson) 1697.

15/4 ✓

Bracken Bottom Farmhouse

GV

II

Farmhouse. Late C17 with C18, C19 and C20 alterations. Limewashed rubble, stone dressings, stone slate roof. 2 storeys, 4 bays. Gable end to street: central entrance has plain jambs, projecting impost and basket arched lintel, 6 panel door. Right-hand ground floor and upper floor 3-light recessed flat faced mullioned window; date dripstones and C20 casements. Garden front: Right of centre entrance is mid C20 lean-to porch. Left-hand 4 light recessed flat faced mullioned window date dripstone, 2 pane casements and fixed lights. Right-hand ground floor large, late C19 2-light recessed flat faced mullioned window, sashes with glazing bars. On upper floor: left of centre 2 light recessed flat faced mullioned, right hand former 3, now 2 light double chamfered with only left-hand mullion remaining, right hand single light, probably originally 2-lights but with mid-C19 surround; casements and fixed lights. Left-hand shaped kneeler and coping, left-hand gabled end, left of centre and right-hand stack at gable end of C19 heightened part of farmhouse. Interior: ground floor right-hand room contains dado and c1780 panelled end wall incorporating 5-panel doors and remarkable cupboard with segmental curved back keyed round arch and shaped shelves. Fluted Doric pilasters and full entablature with paterae in metopes. Scrolled pediment enriched with egg and dart to soffit, paterae to scrolls flanking pineapple within vase. Dentilled cornice. Moulded plaster ceiling, probably early c18 with plaster overmantle of similar date.

HORTON IN RIBBLESDALE

BRACKENBOTTOM

15/5 (20/25) ✓

Bradford Potholders'
Club, (formerly listed
as Mr Dixon's House
west of Mr Greenbank's
House)

GV

II

Formerly farmhouse, now house. Late C17, refronted mid to late C18 with late C18 right-hand bay and C20 alterations. Squared limestone watershot rubble, millstone grit dressings, slate roof. Formerly 2 storeys, double fronted, now 3 bays. Formerly central entrance has plain surround, c1970 door. 2 ground floor and 2 upper floor windows: 3 light flat faced mullioned; C20 casements and fixed lights. Ground floor date dripmould. Right-hand bay contains right-hand entrance, plain surround and c1970 door. To left is ground floor window, c1970 and upper floor 3 light flat faced mullioned windows; C20 casements and fixed lights. 3 rows of projecting slate throughs. Left-hand gable end, former right of centre and former right-hand gable ridge stacks. Late c17 window to rear include; 3 light chamfered mullioned and similar right-hand ground floor double chamfered but mullions now missing. On upper floor are 2 former 2-light chamfered mullioned window with square caps, mullions missing. Central C18 staircase window with transom. Front right-hand room contains c1800 kitchen fireplace with corbelled mantle. Upper floor bedroom contains c1800 fireplace with moulded imposts and mantle.

HORTON IN RIBBLESDALE

BRACKENBOTTOM

15/6 ✓

Green Gates Farmhouse

GV

II

Farmhouse. Dated 1781 with early C18 origins and C20 alterations. Squared limestone rubble, millstone grit dressings, stone slate roof. 2 storeys, 2 bays. Central entrance has plain surround on square bases, lintel inscribed IF EF 1781; nine panel door. 2 ground floor and 3 upper floor windows, plain projecting surrounds, sashes with glazing bars. Shaped kneelers and coping. Shaped eaves modillions. Gable end ridge stacks. Rear entrance has moulded surround and lintel inscribed:

F

17 TA 12

One ground floor and 3 upper floor windows reusing early C18 double chamfered surrounds. Ground floor left-hand 2-light double chamfered mullioned window.

HORTON IN RIBBLESDALE

BRACKENBOTTOM

15/7 ✓

Keeper's Cottage

GV

II

Farmhouse. Mid-C18 with C20 alterations. Slobbered, square rubble, millstone grit dressings, slate roof. Central staircase plan. 2 storeys, 3 bays. Central entrance has plain surround, early C20 door. 2 ground floor and outer 2 upper floor 4 light windows, central upper floor 2-light windows, all have flat faced mullions and moulded surrounds, C20 casements and fixed lights, dripstone to ground floor. Gable end coping and ridge stacks. Left-hand return contains upper floor 2-light flat faced mullioned window with moulded surround, C20 casements; 2 similar windows at rear one 2-light, the other 4-light.

HORTON IN RIBBLESDALE

FOREDALE

13/1 (20/18) ✓

Foredale Farmhouse

II

Farmhouse. Dated 1731 with C20 alterations and C17 origins. Pebbledash, painted stone dressings, slate roof. Lobby entry plan. Rear to street. 2 storeys, 4 bays. Garden front: 2 storeys, 3 bays. Right of centre 2 storey gabled entrance porch, moulded surround and decorated lintel inscribed:

TM

G

cornice; C20 half-glazed door. Former 2-light chamfered mullioned window in gable, mullion now missing, cornice; C20 casements. To left on ground floor is former 3-light mullioned window, mullions now missing, and sill lowered in C20 to form French window; on upper floor are 2 former 2 light double chamfered mullioned windows, mullions missing and sills lowered. To right on ground floor is former 3-light double chamfered mullioned window, mullion missing, and upper floor 3-light flat faced mullioned window, C20 casements and fixed lights. Left-hand gable end, right of centre and right-hand projecting gable end ridge stack. Interior: front left-hand room contains mid-to-late C18 fireplace, moulded impost, pulvinated frieze and projecting cornice with fleur-de-lis and floral decorations.

SD

~~NY~~ 811696

HORTON IN RIBBLESDALE

HELWITH BRIDGE

13/2 (22/50) ✓

9.3.84

Helwith Bridge

GV

.II

Road bridge. 1876. J S Crossley, Engineer. Rock faced gritstone rubble with brick arch heads, continuous stone band at road level, parapets. Six segmental arches, five to the River Ribble and one to the railway line easternmost and now partly blocked. Constructed as part of the Settle to Carlisle line of the Midland Railway.

HORTON IN RIBBLESDALE

INGMAN LODGE ROAD

7/1 ✓

-

-

Boundary stone

II

Parish boundary stone. Early C19. Painted slate slab, with angled top, inscribed HORTON INGLETON, separated by a vertical groove. Left-hand side damaged.

HORTON IN RIBBLESDALE

INGMAN LODGE ROAD

7/2 (5/38) ✓

Lodge Hall

II*

Farmhouse. Dated 1687. Limewashed rubble, painted stone dressing, stone slate roof. T shaped plan. 3 storeys, 4 bays, right-hand 2 bays project slightly. Left of centre entrance has moulded surround with flanking halberds; decorated lintel with billet moulding. Datestone above inscribed CW (Christopher Weatherhead). Corbelled round hood and slate hood above. Flanking ground floor and first floor cross windows with hoodmoulds. On second floor above entrance is stepped 3 light chamfered mullioned window with stepped hoodmould. Far left-hand first and second floor version shaped windows with hoodmoulds. Ground floor and first floor of projecting right-hand bays each have 2 light mullioned and transomed window which turns the corner as at The Folly, Settle (qv), the mullion acting as a support; Right-hand 3-light ovolo mullioned and transomed window on ground floor and first floor, all with hoodmoulds. Chamfered single light to second floor. All windows have leaded casement and fixed lights with diamond shaped quarries. Right-hand gable end ridge stack on corbels, left-hand gable end ridge stack was similar, but has since collapsed and been rebuilt flush with gable wall. Prior to this rebuilding there was evidence in the gable and on the ground of an extension further south which may have been associated with an earlier house on the site. Interior includes segmental arched kitchen fireplace with chamfered surround, and decorated arch to parlour fireplace.

HORTON IN RIBBLESDALE

MAIN STREET

15/8 ✓

New Inn Bridge

GV

II

Road bridge. Late C18. Dressed stone. 2 span segmental arches. Central angular cutwater to south, central and flanking pilasters. String course to base of parapet and wing walls, coping to walls with moulded caps to pilasters. Segmental pointed curve to north cutwater with canted bay above for pedestrians. Stile with steps in north parapet.

HORTON IN RIBBLESDALE

MAIN STREET
(east side)

15/9

4 South ~~Cottage~~^{View} (marked
on OS map as Hoyle
Cottage)

GV

II

Cottage. Dated 1801 with C17 origins. Limestone rubble brought to course, millstone grit dressings, slate roof. 2 storeys, 2 bays. Left-hand jambs of right of centre entrance abuts former gable end of C17 building; moulded surround, gabled hood and datestone inscribed JG (J Green); c1970 door. 2 ground floor and 2 upper floor 2-light flat faced mullioned windows, C20 casements. Right-hand shaped kneeler, gable end coping and ridge stack. Interior: front left-hand room has arched cupboard of c1800 with fluted Doric pilasters and palmette frieze with swags to cornice. Front right hand room has early C19 fireplace with plain surround and mantle on 2 moulded stone corbels. Crange and range c1800 by T Altham & Son, Penrith.

HORTON IN RIBBLESDALE

MAIN STREET
(east side)

15/10 (20/1A) ✓

Church of St Oswald

I

Parish church. C12 nave, rest C15 with C19 and C20 alterations. Rubble brought to course, stone dressings, lead roof. 3 stage west tower; gabled south entrance porch, 5 bay nave and north and south aisles, one bay chancel and north and south chapels. West tower: segmental pointed west entrance with moulded surround and hoodmould, plank door. 3 light Perpendicular window with trefoil heads, central light attached to mullion which pierces arch above, hoodmould. Small trefoil headed window above and 2-light louvred window to bell stage with trefoil heads and hoodmould. Diagonal buttresses, string course at base of embattled parapet. South entrance porch: moulded segmental pointed arch; Romanesque entrance with round head, moulding include zig-zag and roll, some restored c1980, plank door. Three 2-light Perpendicular chamfered mullioned windows to north and south aisles, trefoil heads. Chancel: segmental pointed south entrance with chamfered surround, plank door. Double chamfered 3-light mullioned window with round heads to right. North vestry: circa 1879 eaves stack. East window to north and south chapels: both 2-light double chamfered mullioned with round arched heads. East window to chancel: 3-light chamfered mullioned with trefoil heads, rectilinear tracery above; hoodmould with head stops. Diagonal buttresses, east cruciform finial. Interior: round arches to north and south arcades. North arcade: dentiled cornice and paterae to cap of westernmost pier, probably late c18. Two westernmost piers are round, that to east is octagonal. Corbels in north and south aisles mark formerly lower pitch of aisle roof. Nave: shallow pitched King post roof, restored c1879. Romanesque font: zig-zag moulding to bowl on square base with splayed sides.

HORTON IN RIBBLESDALE

MAIN STREET
(west side)

15/11 ✓

Holme Farmhouse

II

Farmhouse. Mid to later-C18 with C20 alterations. Squared limestone rubble, millstone grit dressings, stone slate roof. Central staircase plan. 2 storeys, double fronted. Central gabled entrance porch, c1970, C20 door. 2 ground floor and 2 upper floor 3-light flat faced mullioned windows, dripstones to ground floor; outer 2 pane fixed lights, central sashes without glazing bars. Gable end and right of centre ridge stacks.