

SHEPHERD & WALKER: A HISTORY OF THE BUSINESS

John Hayhurst, trading as a druggist and grocer in the shop on the north side of Settle Town Hall died on 12 May, 1843, aged 25. His two apprentices were William Armistead and William Shepherd, who started trading as Armistead and Shepherd. In about 1851, Armistead went to Kendal and traded there under the same title until about 1890 when the Settle business changed to John William Shepherd, son of William Shepherd who died in 1871.



Staff of Shepherd & Walker c.1900

In 1851 a Bill was moved in the House of Commons to regulate pharmacy, so that 'no person would be admitted to the Register [of the Pharmaceutical Society] without first passing the Society's examination in Latin Language and Classical Knowledge, Botany, Materia Medica, Pharmaceutical and General Chemistry and Toxicology'.

William Walker started as an apprentice to William Shepherd in 1865 and, after one year at the South London School of Pharmacy, qualified in 1873 as a Chemist and Druggist and a Member of the Pharmaceutical Society. He returned to Settle to manage the business until the time when Shepherd's son qualified in 1880, having won a medal as the best student in his year.

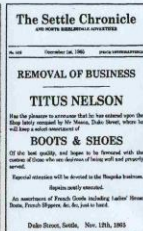
In 1891, J.W. Shepherd bought the premises in which the pharmacy is today and moved there in 1893. In 1903, William Walker and his son, William Towler Walker, who qualified in 1900, formed a partnership with J.W. Shepherd as Shepherd & Walker. In 1908 Shepherd withdrew from the partnership and retired, but the title was retained.

The family connection continued when W.H. Walker qualified in 1938 and J.S. Walker qualified in 1940. After the Second World War, Shepherd & Walker discontinued the grocery section which had been a feature of the business since 1843. This allowed the pharmacy to expand, assisted by the purchase of adjacent premises. Finally in 1978, it was time to retire from pharmacy and Shepherd & Walker ceased business after a continuous history of 135 years.

[Photograph and notes reproduced by permission of Mr J.S. Walker]

NELSON'S FOOTWEAR

Now in its fifth generation, this thriving family business was first established in Chapel Street, Settle by Titus Nelson in 1847. In 1865 a move was made to premises in Duke Street where the business has remained ever since, still boasting a beautifully preserved Art Deco shopfront.

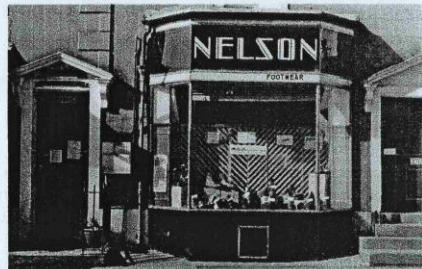


Today, though still selling and making footwear for customers, a particular speciality is the hand-crafting of clogs, boots and shoes for period productions and historical re-enactments.

above left: Titus Nelson
centre: announcement of move
above right: John Nelson
lower right: John William Nelson



Jim and Daniel Nelson, the present generation of father and son



The Art Deco shopfront in Duke Street, Settle

J W LAMBERT

The well-known firm of Settle printers, bookbinders and stationers began life in 1861 in a cottage on Well Hill. James Lambert subsequently purchased the lease of premises in Cheapside in 1891. The printing side of the business, named the 'Caxton Press', was particularly important and produced a wide range of material from books to tickets and handbills. Although the family link has now gone, the name is continued to the present day.



James Lambert and his wife, Mary Tant Rawlinson

HARGER BROTHERS

The business was founded in 1812 by Robert Harger, a native of Settle, as a firm of fretwork specialists. During the 19th century Hargers also undertook a variety of work, including some general building and it was not until the turn of the 20th century that they specialised as cabinet makers and household furnishers.

QUARTZ
AND
ORIGINAL
Furniture
For . . .
Drawing Room,
Dining Room,
Bedroom,
Library, &c.

SHERATON BUREAU . . .
Chippendale Palm Stands and Coal Vases.
Fine Combination BUREAU and CABINET in Mahogany.
Bureau, Piano, Office Tables,
China Cabinets, Sewing Machine Stands,
Writing Tables, Ladies Work Benches.

BEDROOM SUITES
in Rich Oak with Inlaid Fretwork
and gilt
Rob. Flower Stands and Tables.
Splendid Show of Staircases.



CARPETS FROM THE FAR EAST
(Preserved from the original)

Carpets,
Linoleums, and
Floor Coverings } of every kind.

ZOPRA, SPARTAN,
BROUSSA, and other CARPET FABRICS in very
choice squares. Artistic, durable, and inexpensive.
Most of our Stock processed before the Advances.

SOME ART SQUARES in odd
sizes, and slightly damaged in
manufacture, at reduced rates.
JUTE SQUARES in good designs from 7/11 each.

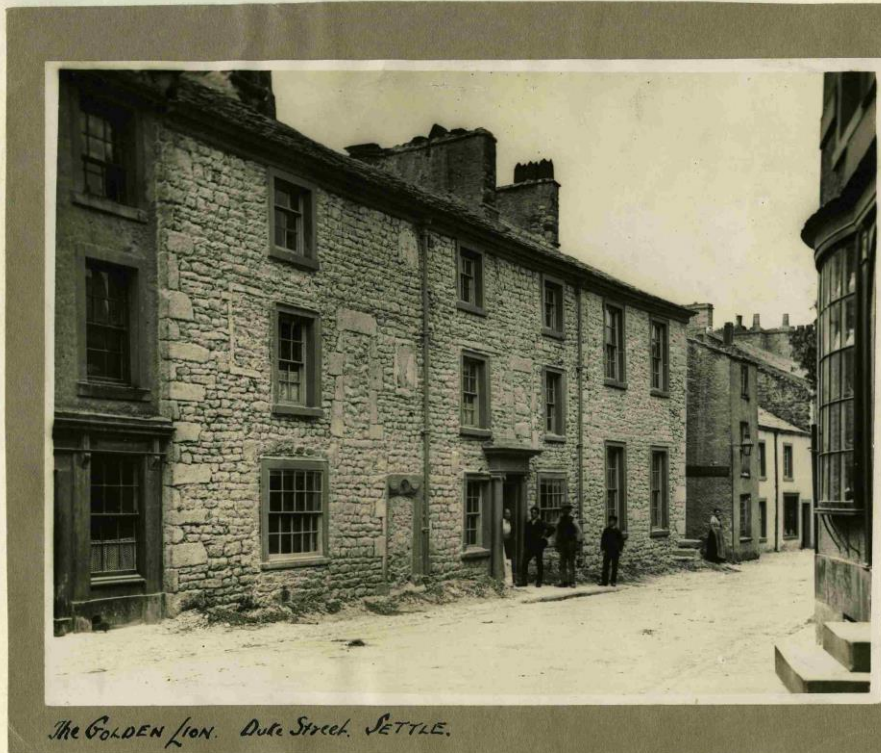
Oriental Rugs. A few very fine specimens.
Rich Colourings, from 90/- to 400/- each.
A good selection of MEEZAPORE and KOULA RUGS.
DECCAN RUGS from 7/11 each.

An interesting feature of Harger's work was their extensive mail-order business and the large number of illustrated catalogues they issued, leading to the receipt of many orders from overseas.

Parts of handbills 1900-1910



TOWN HALL ROOF, FLAG POLE PAINTING BY WORKFORCE.
1984
SID EDMONDSON D. MCGOLDRICK M. DOUGLAS. J REID.



The Golden Lion. Duke Street. SETTLE.



THE

GOLDEN LION HOTEL,

— SETTLE. —

THIS fine old-established Family and Commercial House which has maintained for two centuries the reputation of being the principal Hotel in the district, has recently been thoroughly renovated and re-embellished, and is now under new management. It has been re-furnished throughout in the most approved modern style without reference to cost, by MESSRS. GILLOWS, and now offers every luxury and convenience for visitors, combined with the comfort and domesticity of home. In addition to the usual Entertaining Rooms, there are Private Sitting Rooms, Spacious Coffee Room, Commercial Room, Smoke Room, and every other accommodation both for Commercial Gentlemen and Private Families.

The Wines, &c., have been carefully selected, and are of the finest quality, and the Tariff is strictly moderate and uniform.

Tourists visiting the beautiful district of Craven will find this Hotel centrally situated for making excursions. Castleberg, a bold precipitous rock, 300 feet high—the celebrated Victoria Cave—the Ebbing and Flowing Well—Giggleswick, with its beautiful scenery, and its celebrated school founded in 1553, are all in the immediate neighbourhood; and the surrounding district abounds in beautiful drives, and is justly famed for its magnificent and romantic scenery.

GOOD STABLING AND LOOSE BOX.

SCALE OF CHARGES FOR POSTING:

1/3 per mile for single Horse including Driver.
1/9 " pair of Horses "
Half-fare for Return Journey.

**Bus meets all trains both at Giggleswick & Settle Stations*



R. TELLEY SKETCH