

SETTLE NOW AND THEN

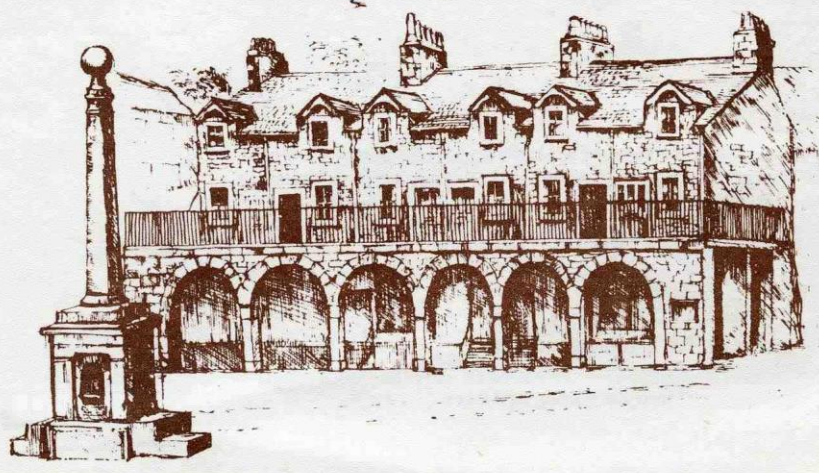
No 20	1844	SETTLE NOW AND THEN MAP.
" 29	1870	VIEW OF SETTLE FROM TOP OF BELLE HILL
" 155	1910	MARKET PLACE LOOKIN WEST
" 29		NAKED MAN HOTEL
" B 10	1939	NAKED MAN MENU.
	30	YE OLD NAKED MAN "MR G SPENCER" SNO ICES
" "	1988	CUTTING END OF AN ERA SPENCER FAMILY (JULY 26)
" 19	1950 ^s	SETTLE AND DISTRICT FARMERS TRADING SOC
" 33	1970	TOP LEFT GEO SANDERSON/W. DAWSON ^s /ROYAL OAK
" 7	1912	WILLIAM DAWSON (WHOLESALE IRONMONGER)
" B 11	1939	ROYAL OAK MENU
" 211	1972	VIEW FROM TOWN HALL ROOF
" 34	1910	MARKET PLACE. CORNER SHOP, C GRAHAM, BARN, C GRAHAM
	7	1900 ^s WHITE HORSE, C GRAHAM. GROCER.
" 18	1976	J.A BATTY AND F. JAMES V.G STORE
" 91	1900	SETTLE "WEDNESDAY" CRICKET TEAM (SHOP KEEPER)
" 49	1930	1 ST MOTORISED FIRE ENGINE SETTLE R.D.C.
" 50	" "	DETAILS AND CREW LIST.
" 48	1950	FIRE CREW WITH DENNIS ENGINE (OLD FIRE STATION)
S. FILE " 27	1915	WILLIAM HORNER. (PAINTER AND PAPER HANGER.
" 51	1939	HAND BILL OPENING OF NOVIC CINEMA + 1942 PROGRAMME
" 70	1861 1961	100 OF SETTLE COOP SOC 1861 TO 1961
" 209		2 VIEW OF THE MARKET AS IT IS TO DAY
" 39		EARLY DAYS SETTLE MARKET PLACE
" 154		MARKET PLACE. CORK J.T. HARTLEY TOWN HALL
" 23		HISTORY OF S.R.D.C 1 ST JAN 1895 TO 1974
" 219		HISTORY OF, SHEPHERD P. WALKER, NELSON'S, J.W LAMBERT
" 219		" AND HARGER. BROS
" 186	1984	TOWN HALL ROOF FLAGPOLE PAINTING.
" 32		THE GOLDEN LION
B 13		" GOLDEN LION MENU / STABLING.
TOTAL	31	

SETTLE

109



THEN and NOW





29



YE OLD NAKED MAN CAFÉ

SETTLE

YORKS.

We specialize in S.N.D. Ices

HIGH CLASS CATERING UNDER PERSONAL SUPERVISION

TUESDAY JULY 26 1988

Family settles for end of an era

A FAMILY'S 60-year connection with the famous Ye Olde Naked Man cafe in Settle will be severed shortly when new owners take over.

The Market Place cafe, stopping-off place for thousands of visitors heading for the Dales, has been in the hands of the Spencer family since the 1920s.

But in an amicable split, the family — 90-year-old Mrs Sarah Spencer still serves customers — has sold the cafe, the origins of which are still shrouded in mystery.

Outside the two-storey building hangs a datestone showing a man in a coffin with the date 1663 and the initials I.C., and to this day no-one seems sure of its early history.

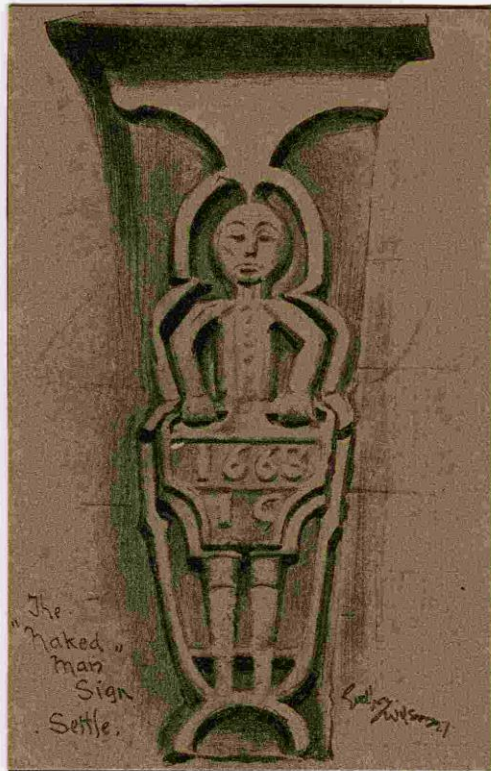
"It had been an inn before we bought it, but had lost its licence and although we think the landlord used to be a coffin maker, nobody really knows," said Mrs Joan Hemingway, nee Spencer, who currently runs the cafe with her husband, Jack, and brother Alan.

Although the family are keeping tight-lipped about the price they received, Mrs Hemingway says they are happy with the financial arrangements and would be staying in Settle.

"It seems strange that after 40 years of unlocking the door, I won't be doing it any more," she added.

"We've enjoyed it here, but we're all getting on a bit and we have to give it up sometime."

Ironically, the figure on the bold datestone is not naked. His hands are holding a medieval plane, while the outer frame is shaped like a coffin.



TOURING PARTIES SPECIALLY
CATERED FOR.

HIGH-CLASS CHOCOLATES,
CONFECTIONERY, ETC., IN THE SHOP

MEAT PIES ARE ONE OF OUR
SPECIALITIES

CIGARETTES

Ye Olde Naked Man Cafe



Settle

1689

CREAM ICES & DRINKS

We specialise in S.N.D. Cream Ices
Vanilla or Strawberry 4d.
With Fresh Cream 6d.

S.N.D. Ices are made in a Model Dairy
from Fresh Cream, Fresh Milk, Pure
Cane Sugar.
A Genuine Food Product

SUNDAES

Pineapple	8d.
Peach Melba	9d.
Pear Melba	9d.
Banana Royale	1/-
Coupe May	1/-
Coupe Brazilian	1/-
Cabaret Delight	10d.

Menu.

TEA, COFFEE, Etc.

Tea, per Pot	4d.
Coffee, per Cup	3d.
Cocoa ,, ,,	3d.
Bovril and Oxo	4d.
Horlicks	4d.
Milk, per Glass	3d.
Hot Milk	3d.
Soda and Milk	3d.
Natural Lemonade	3d.
,, Grape Fruit	3d.
,, Orange Crush	3d.

+ +

BREAD & BUTTER, CAKES, Etc.

Bread & Butter, per person (white or brown)	3d.
Buttered Toast	2d.
Toasted Teacake	4d.
Buttered Teacake	3d.
Fancy Cakes and Cream Cakes (our own make)	2d.
Teacake Sandwiches, Ham or Tongue	6d.
Meat Pies	4d.
(our own make)	

+ +

Only Best Butter used in the Cafe.

Menu.

COMPREHENSIVE MEALS

Grilled Ham and One Egg Bread and Butter Pot of Tea	1 8
Two Eggs	2 0
Grilled Ham and Chips Bread and Butter Pot of Tea	1 6
Plaice and Chips Bread and Butter Pot of Tea	1 6
Egg and Chips Bread and Butter Pot of Tea	1 2
Meat Pie and Chips Bread and Butter Pot of Tea	1 2
Boiled Ham and Tongue Bread and Butter Pot of Tea	1 6
Green Salad Bread and Butter Pot of Tea	1 2
Fruit and Cream Bread and Butter Pot of Tea	1 3
Chop and Chips Bread and Butter Pot of Tea	1 6
Sausage and Chips Bread and Butter Pot of Tea	1 2
Afternoon Teas	1 0

Menu.

EGGS, GRILLS, FISH Etc.

Poached Egg on Toast	7d.
Baked Beans on Toast	8d.
Tomatoes on Toast	8d.
Sardines on Toast	9d.
Boiled Egg	4d.
Scrambled Egg on Toast	8d.
Welsh Rarebit on Toast	10d.
Grilled Ham	1/-
Plaice Fillet	10d.
Crab Salad	
Lobster Salad	
Green Salad	6d.
Fresh Salmon (in season)	
Cold Ham or Tongue	1/-

+ +

SWEETS

Pears (with Cream)	9d.
Pineapple ,,	9d.
Peaches (Ice Cream)	9d.
Apricots	9d.
Fruit Salad (with Cream)	10d.
Strawberries and Cream (in season)	

6



NAKED MAN CAFE AND SHOP SETTLE AND DISTRICT FARMERS
 1950s



Settle S.7403L 



NAKED MAN SETTLE AND DISTRICT DAWSONS
 FARMERS



1928

Telegrams:—"Dawson, Ironmonger, Settle."
Telephone:—No. 1y2.

Market Place,
SETTLE, *March 10* 191

Mr. John Moore

Dr. to WILLIAM DAWSON,
WHOLESALE IRONMONGER.

Lamp Depot.
Kitchen Ranges.
Builders' Merchant.
Rain Water Goods.
Implement Warehouse.



Burning and Lubricating Oils.
Paints, &c.
Brushes.
Bedsteads.
Ammunition.



Enamelled Ware.
Dairy Appliances.
Electro-plated Goods.
Sewing and Wringing Machines.

<i>1912</i>					
<i>Dec</i>	<i>7</i>	<i>1 new Boiler lid</i>			<i>11</i>
	<i>12</i>	<i>1. 2^o 296/281 Hob Register 36 x 38 with lining</i>	<i>}</i>		
		<i>Campy. Sectional B.B. 2^o Gram: finish</i>		<i>2</i>	
<i>Feb</i>		<i>8. 6 x 6 tiles</i>		<i>5</i>	<i>3 4</i>
					<i>2 = 4 = 3.</i>
					<i>3 = 6</i>
					<i>2 = 0 = 9</i>
					<i>1</i>
					<i>1 19 9</i>

Allow^d for broken in Lrausch

Received *Dis*

March 10/13

W Dawson

With Thanks.

DRINKS

Tea	3d. per head
Coffee	...	4d. per head, Black or White		
Minerals	4d. each
Milk	3d. glass
Bottled Bass, Worthington, Guinness				8d. each
Dutton's Pale Ale	6d. „
Draught Beer—Mild, half pt.	4d. „
		Bitter, half pt.	...	4d. „
Baby Moussec	1/- „

Wines, Liqueurs, etc. to order.

Intoxicants can only be served during the usual opening hours, unless you are resident in the Hotel and registered.

ROYAL OAK HOTEL

SETTLE
YORKSHIRE

Menus

Residential Catering Fully Licensed

Telephone 2161 Settle Proprietor:
Telegrams Royal Oak, Settle JOHN ROBINSON

1939

see how

LUNCHEONS

COLD

	s.	d.
Cold Ham, Beef & Tongue, Pickles,		
Bread & Butter, Sweets	2	0 each
As above with Fresh Green Salad	2	6 „

HOT

Soup, Joint, Potatoes, Two		
Vegetables, Sweet, Cheese & Biscuits	2	0 „
As above with Lamb	2	6 „
As above with Chicken	3	6 „

GRILLS

All with Tea, Bread and Butter and Cakes.		
York Ham and two Eggs	2	6 each
Steak and Chips	2	6 „
Lamb Chops and Chips	2	6 „
Plaice and Chips	2	6 „
Mixed Grill and Chips	3	0 „
Fried Eggs and Chips	2	0 „

Please enquire for any meal not shewn

TEAS

AFTERNOON TEA

	s.	d.
Brown and White Bread and		
Butter, Toast, Cakes, Tea	1	6 each

HIGH TEAS

All with Tea, Brown and White		
Bread and Butter and Cakes		
Fruit and Fresh Cream	1	9 each
Fresh Green Salad	1	9 „
Crab and Green Salad	2	3 „
Poached Eggs on Toast	2	0 „
Baked Beans on Toast	1	9 „
Sardines on Toast	1	9 „
Fried Eggs and Chips	2	0 „

COLD MEATS

Ham, Beef, Tongue	2	0 each
Sandwiches		6 each
Coffee		4 „
Tea		3 „