

T. WALKER. 1821



Sept 1821

Supper	-	1	-	1	-	0
Liquor	-	1	-	0	-	0
Wash	-	1	-	0	-	0
Board	-	1	-	0	-	0
	-	1	-	10	-	6

T. WALKER.



Dinner	-	2	-	0	-	0
Wine	-	5	-	0	-	0
Tea	-	0	-	11	-	6
Paper	-	0	-	11	-	1
Horse	-	0	-	11	-	4
	-		-		-	7

### KIRKLEY HART'S HEAD, GIGGLESWICK.

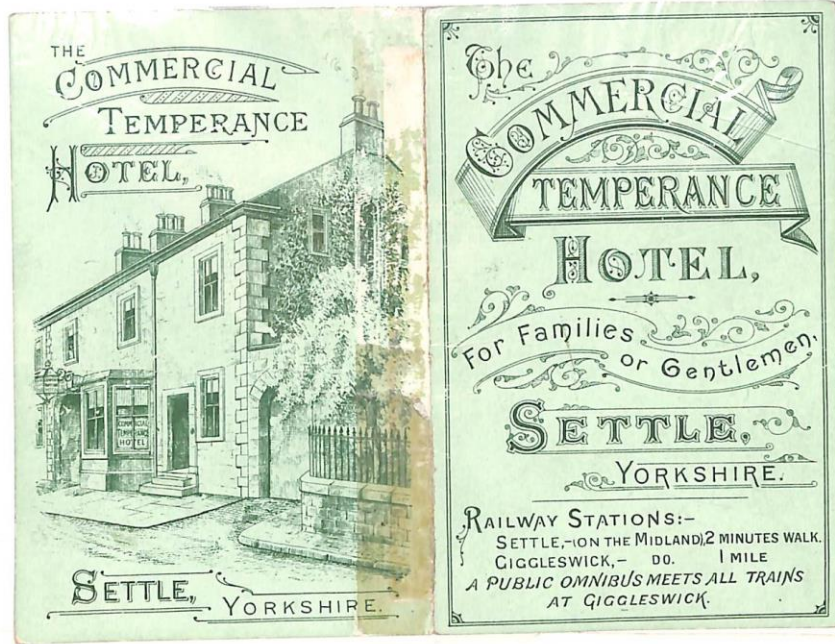
Eating. . . . .			
Wine and Negus . . .	-	9	6
Rum, Brandy and Shrub	-	9	6
Ale, Beer and Porter. . .	-	2	0
Punch and Geneva. . .			
Coffee and Tea. . . . .			
Servants Eating and Ale			
Horses Hay and Corn.			
Paper and Tobacco . . .			
Horse and Chaise hire. .			
Sugar and Fruit . . . .			
Chamber Fire. . . . .			
Washing. . . . .			

Troughton, Printer, Settle.

1803

1803

HINDS HW



THE COMMERCIAL TEMPERANCE HOTEL,  
SETTLE, YORKSHIRE.

The COMMERCIAL TEMPERANCE HOTEL,  
For Families or Gentlemen.  
SETTLE, YORKSHIRE.

RAILWAY STATIONS:-  
SETTLE, - ON THE MIDLAND, 2 MINUTES WALK.  
GIGGLESWICK, - DO. 1 MILE.  
A PUBLIC OMNIBUS MEETS ALL TRAINS  
AT GIGGLESWICK.

**A Tourist's Guide to the Settle District.**

**On Foot Round Settle,**

BEING A DESCRIPTION OF THE

NATURAL FEATURES OF THE DISTRICT, WITH CHAPTERS OF LOCAL HISTORY & TRADITION,

By GEORGE H. BROWN, Congregational Minister.

ALSO, A CHAPTER ON THE PLANTS OF THE DISTRICT,

By R. F. T. and F. P. L.



CROWN 8vo.,  
248 pages.

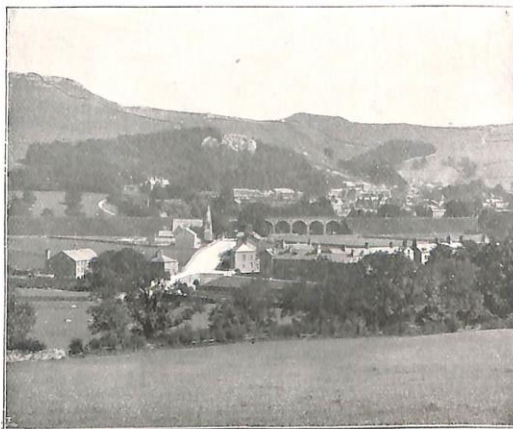
*Cloth, Gilt Lettered,*

WITH

Map & Illustrations,

**2/-**

*by post 3d. extra.*



CROWN 8vo.,  
248 pages.

*Cloth, Gilt Lettered,*

WITH

Map & Illustrations,

**2/-**

*by post 3d. extra.*

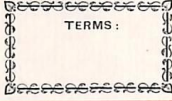


B 16

King's Mill,  
Settle,

Yorkshire, July 3<sup>rd</sup> 1885

Mr. C. E. Fowler



Bought of J. & B. Hartley.

To 2 pairs 13/4 Shells

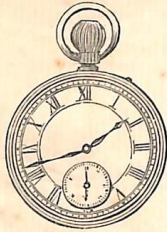
2 4/-

8 1

GUINEA GOLD WEDDING RINGS

MARKET PLACE,  
Settle, 191

BIRTHDAY AND  
WEDDING PRESENTS



M  
Bought of HENRY LAYCOCK,  
Practical Watchmaker, Jeweller, and Silversmith.



ALL KINDS OF WATCHES, CLOCKS, AND JEWELLERY NEATLY REPAIRED ON THE PREMISES. CLOCKS WOUND BY THE YEAR. TERMS - CASH.

Town Head.

SETTLE, April 1874

Mr. M. L. Louch,

Dr. to JOHNNY BOWSKILL,  
SMITH.

1874			
Feb 5	New Grate making	13	at 4
26	Sett. Hoopings		
April 16	Sett. making		


Settle April 25<sup>th</sup>  
Johnny Bowskill

500  
Date \_\_\_\_\_ 192  
gallons in \_\_\_\_\_ Churns.  
Warranted PURE NEW MILK with all its Cream.  
(Signed) R. A. HOGG.  

---

**Mr. THOMPSON,  
LEEDS STATION.**

ESTABLISHED OVER 60 YEARS.



**E. H. TOWLER**  
(Sole Proprietor: W. W. THORNER), 1923  
CASTLE MILL,  
Telephone 47. **SETTLE.**

---

**CORN, CAKE and MANURE MERCHANT,  
HAY, STRAW and POTATO DEALER.**

---

SOLE DISTRICT AGENT FOR—  
**CALVINE CALF MEAL. THORLEY CAKE.  
CARTER'S AGRICULTURAL and GARDEN SEEDS.**

---


**DRIFFIELD PURE CAKES.**

Ryman

554 10

HEAD OFFICE *Langelisse, Settle* March 1893

LANGLIFFE, RIBBLEHEAD & INCLETON. *Execrs of the late Revd John Stackhouse*

 **THE CRAVEN LIME CO. LIMITED.**

Terms Nett Cash Monthly Account. Cheques in favour of the Company. and P.O.O. made payable to JOHN CLARK

		Tons	Cwts	Qrs	Tons	Cwts	Qrs	Price			
Oct 17	local 14/6, <sup>22</sup> Timber 17/6, <sup>22</sup> boal 7.13 ref. 7.13.0								9	4	6
Dec 6 <sup>93</sup>	boke 18/3, <sup>22</sup> 9/.								1	7	3
Jan 13	boal 8 1 ref. 8.1.0 <sup>19</sup> boke 21 7/4 <sup>22</sup> 1/2, 11 7/4 8/11,								9	7	1
									19	18	10

*as per 200 5 31/93*

*The Craven Lime Co. Ltd*

*Geo Clark*

*Wm the Hand*

B 19

Ingleton Lime Kilns, *April 30* 18 *59*

*At the Order of the Late Mr. W. Greenwood*

**Bought of R. BROWN.**

Date.	Quantity of Loads.	Of Lime.	Price per Load.	£	s.	d.
<i>1859</i>						
<i>April 20</i>	<i>5</i>	<i>"</i>	<i>9</i>	<i>£</i>	<i>0</i>	<i>3 9</i>
			<i>Settled Apr. 30, 1859</i> <i>R. Brown</i>			

Ingleton Lime Works, *May 12<sup>th</sup>* 1865

*Mr. Greenwood Trustee*

**Bought of Joseph Bentham,**  
**LIME AND TIMBER MERCHANT.**

All accounts due  
May 13th & Nov. 17th  
in each year.

		£	s.	d.
<i>1865</i>				
<i>Feb 9<sup>th</sup></i>	<i>4<sup>00</sup> Loads of Lime arg<sup>t</sup></i>		<i>4</i>	<i>6</i>
<i>18<sup>th</sup></i>	<i>2<sup>00</sup> cart Load of lime ashes</i>		<i>2</i>	<i>3</i>
	<i>Quantity of do</i>		<i>3</i>	<i>6</i>
<i>March 29<sup>th</sup></i>	<i>4<sup>00</sup> Loads of Lime arg<sup>t</sup></i>		<i>4</i>	<i>6</i>
		<i>£</i>	<i>-</i>	<i>12-9</i>

B20

Ingleton Lime Kilns, *May 11* 1861

*Mrs Greenwood Trustees*  
Bought of **R. BROWN.**

Date.	Quantity of Loads.	Price per Load.	£	s.	d.
<i>1861</i>					
<i>Jan 21</i>	<i>5</i>	<i>To Powder Hill</i>			
<i>Feb 25</i>	<i>6</i>				
<i>March 8</i>	<i>12</i>				
<i>14</i>	<i>6</i>				
<i>Apr 4</i>	<i>6</i>				
<i>23</i>	<i>6</i>				
<i>May 11</i>	<i>6</i>				
	<i>47</i>	<i>at 9</i>	<i>£</i>	<i>15</i>	<i>3</i>

*Settled by Brown per R Brown May 25<sup>th</sup>*

Ingleton Lime Kilns, *May 12<sup>th</sup>* 1860

*The Trustees of the Lister & Greenwood Coff*  
Bought of **R. BROWN.**

Date	Quantity of Loads.	Price per Load.	£	s.	d.
<i>1860</i>					
<i>Jan 5<sup>th</sup></i>	<i>12</i>	<i>lbs lime</i>			
<i>March 17<sup>th</sup></i>	<i>10</i>				
<i>21<sup>st</sup></i>	<i>6</i>				
<i>April 13<sup>th</sup></i>	<i>6</i>				
<i>" 14<sup>th</sup></i>	<i>6</i>				
	<i>40</i>	<i>lbs lime at 9d</i>	<i>£</i>	<i>10</i>	<i>0</i>

*Settled May 25<sup>th</sup> R Brown.*

621

Bentham, 2<sup>nd</sup> June

1847

Miss Headall

Bought of ROBERT RAY,  
GROCER, TEA DEALER, &c.

21 Sugar 1 <sup>o</sup> 14/-	14 <sup>o</sup> di 8 <sup>o</sup> 9/11	1.3.11
1 Currant 8 <sup>o</sup> 4/3	1 Rice 5. 2/6	6.9
2 Raisins 4/-	13 Catmings 9/-	1.9
4 oz 6 <sup>o</sup> Pepper 8	1/4 Can Lemon 5	1.1
14 Soap 5 <sup>o</sup> 1/4	6/8 <sup>o</sup> 2 Coffee 4/4	11.0 <sup>1/2</sup>
1/2 Pack Super Fine Flour 5/4		1.5.6
1 <sup>o</sup> F.B. Tea 6/-	2 oz 4 <sup>o</sup> Cassia 6	6.6
1 Broom Head		2.6
2 oz Pow Blue		4
		<u>3.19.4<sup>1/2</sup></u>

WOOLWORTHS

R. J. North Esq<sup>r</sup> Tottenham June 6<sup>th</sup> 1830

Bought of Will<sup>m</sup> Burrow,  
Wine & Brandy Merchant,  
Wholesale & Retail.

2 Gall <sup>s</sup> Port 14/-	1.8.-
2 1/4 B <sup>o</sup> Gin 17/-	1.7.-
Wm Burrow	£2.15.-
	<u>3.10.-</u>



HORTON-IN-RIBBLESDALE, <sup>27</sup> March 31 1883

Mrs. Boardale Newhouse

Dr. to WILLIAM SCOTT,

— Grocer, Tea Dealer, &c. —

Terms Monthly.

5 Per Cent. Charged on all Accounts Overdue.

March 31	4 lb Cheese	2.10
	Bahn 6 1st Flour 2/0 Raisins 4	2.10
	2 lb Currants 10 1 lb Coffee 1/8	2.6
	Baking Powder 2 1/2 lb Raisins 0.8	
	Bottle Pickels 8 2 lb Sugar 1.3	
	1/4 lb Lemon 3/4 5 lb Sp Sugar 1/3	2.0 1/2
	11 lb Ham 3	8.3
	Paid March 31 <sup>st</sup> to Mr. Scott	£ 11.0 1/2

Austwick,

1842

The Trustees of the Late Miss Howden

Bought of E. & R. BAYNES,

CORN DEALERS.

		£	s	d
May 27	2 2 lb of Trade & back 1/2	-	-	9
	bread of 20 lb Meal 2/6 1 lb Groats	-	14	- 1/2
30	1 lb of Currants 3/4 bread 1/4	-	1	- 1/2
	1 lb of Currants 1/4 1 lb Currants 7/4	-	4	9 - 1/2
	1 lb Currants 1/4 1 lb Currants 1/4	-	1	- 1/2
	1 lb Currants 1/4 1 lb Currants 1/4	-	1	- 1/2
	1 lb Currants 1/4 1 lb Currants 1/4	-	1	- 1/2
	1 lb Currants 1/4 1 lb Currants 1/4	-	1	- 1/2
	1 lb Currants 1/4 1 lb Currants 1/4	-	1	- 1/2
June 6	20 lb Meal	-	2	10
7	1 lb Currants 1/4 1 lb Currants 1/4	-	1	- 1/2
	1 lb Currants 1/4 1 lb Currants 1/4	-	1	- 1/2
23	1 lb Currants 1/4 1 lb Currants 1/4	-	1	- 1/2
26	1 lb Currants 1/4 1 lb Currants 1/4	-	1	- 1/2
July 2	10 lb Meal 1/4 1 lb Currants 1/4	-	2	1/2
5	1 lb Currants 1/4 1 lb Currants 1/4	-	1	2
15	1 lb Currants 1/4 1 lb Currants 1/4	-	1	9 - 1/2
16	1 lb Currants 1/4 1 lb Currants 1/4	-	1	7 - 1/2
23	1 lb Currants 1/4 1 lb Currants 1/4	-	0	11
Aug 1	1 lb Currants 1/4 1 lb Currants 1/4	-	-	5 - 1/2
5	1 lb Currants 1/4 1 lb Currants 1/4	-	-	6
Sept 19	1 lb Currants 1/4 1 lb Currants 1/4	-	-	1
	Expenses	-	-	1
		£	2	3 3/2

18th  
 23<sup>rd</sup>  
 Little  
 John Baynes